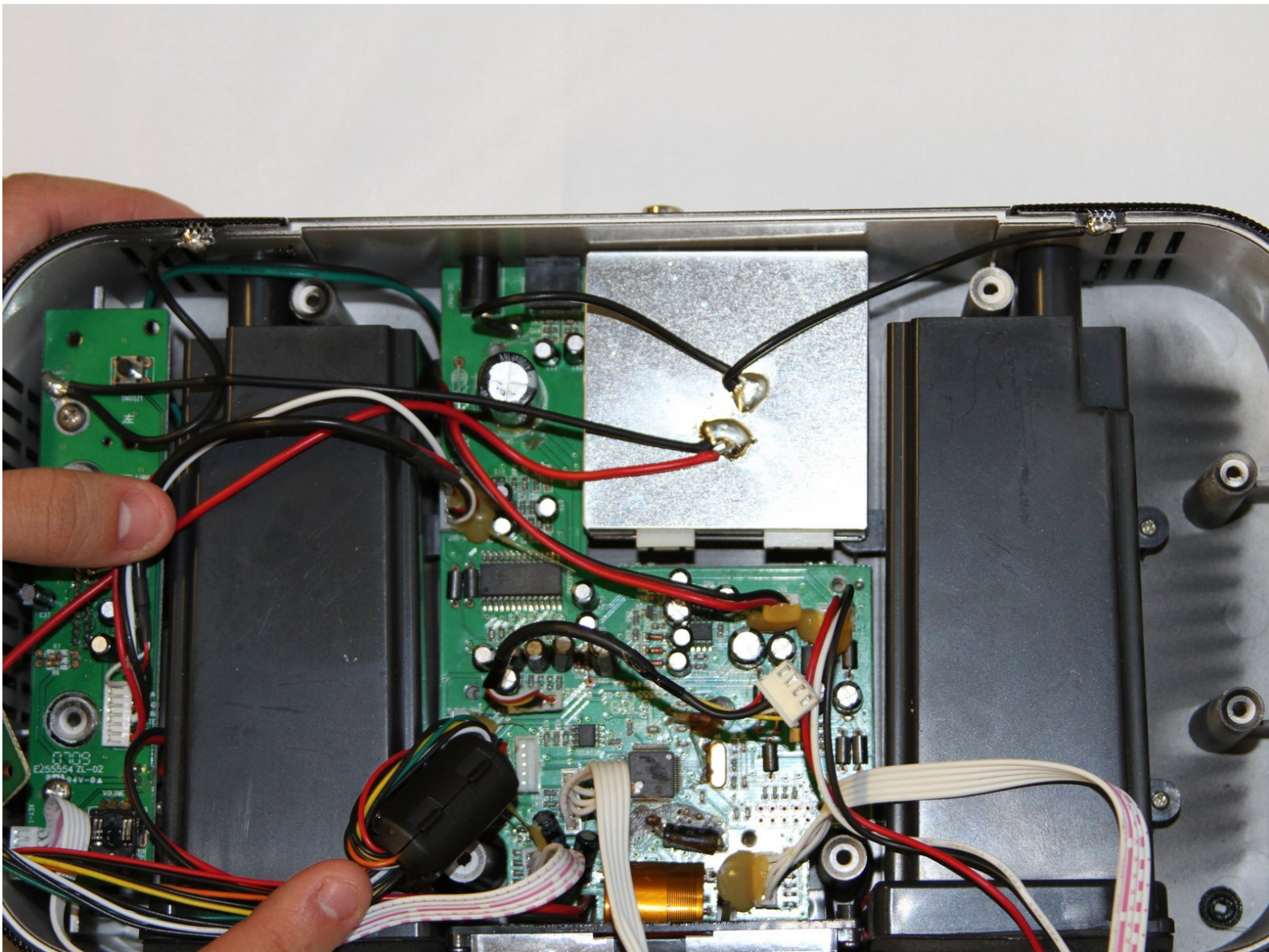




# XtremeMac Luna Motherboard Replacement

Remove or reinstall the main circuitry of your Luna.

Written By: David Ellison



---

## INTRODUCTION

The motherboard controls all of the Luna's operations. Use this guide to install it.

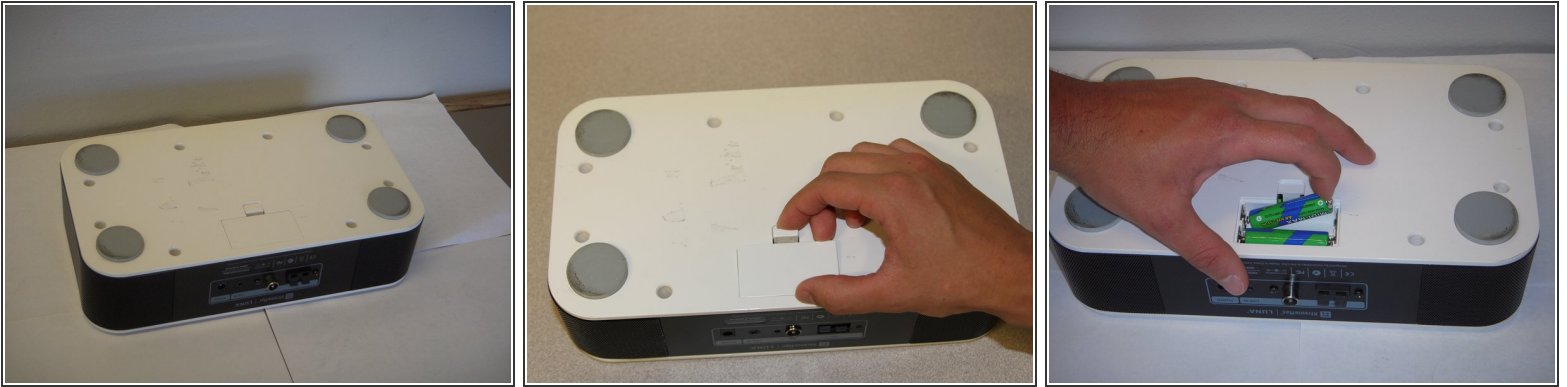
---



### TOOLS:

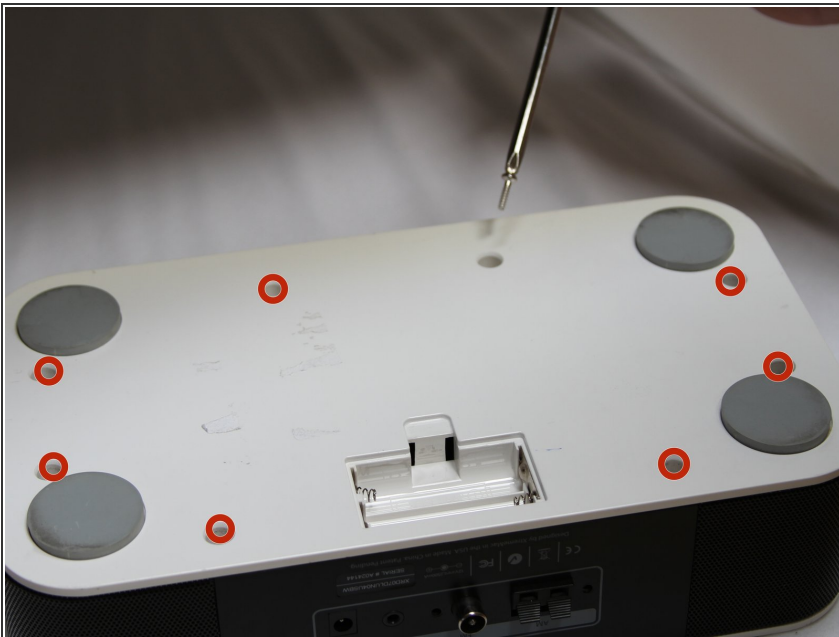
- [Phillips #1 Screwdriver](#) (1)
-

## Step 1 — Bottom Panel



- Flip the device over so that the batteries are closest to you.
- Remove the battery lid by pressing the battery cover's tab and pulling it away from the device.
- Push the battery against the spring and lift it out of the casing.
- Repeat with the other battery.

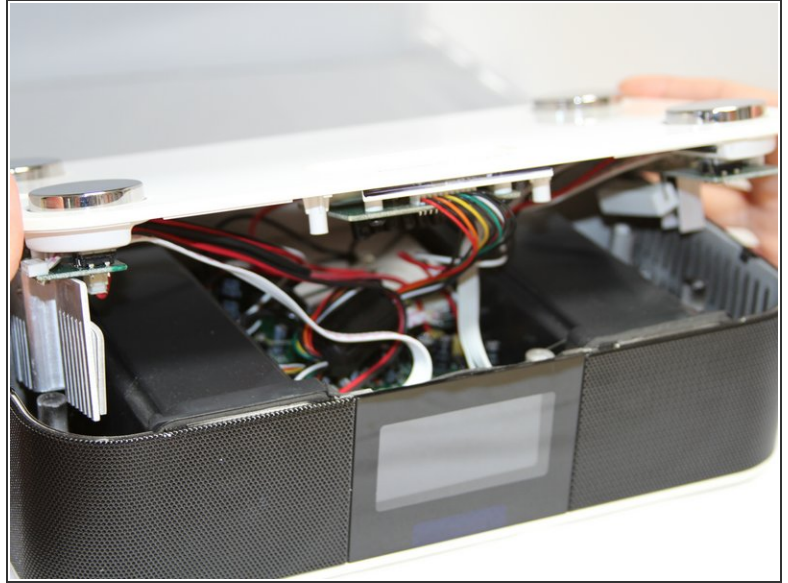
## Step 2



- Unscrew all eight 12mm Phillips head screws with a Philips #1 screwdriver.
- ⓘ The iFixit 26 bit screwdriver kit will not reach the screws. Make sure to use a screwdriver that is thin enough to not get stuck in the screw holes.

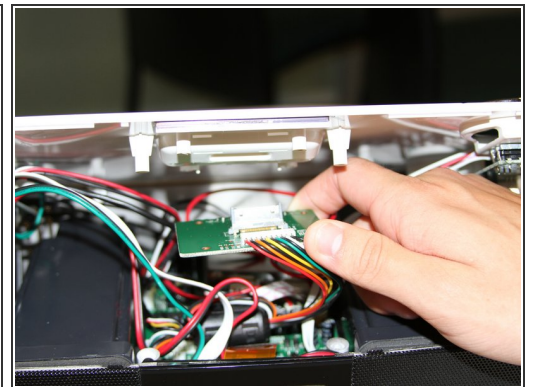
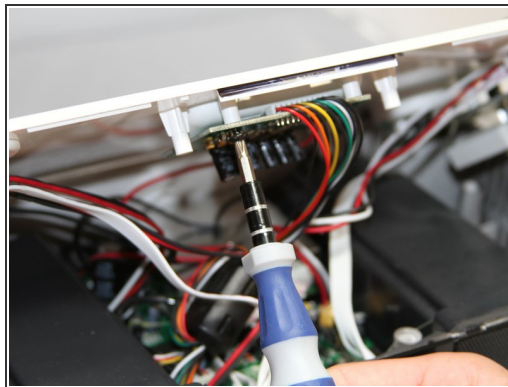
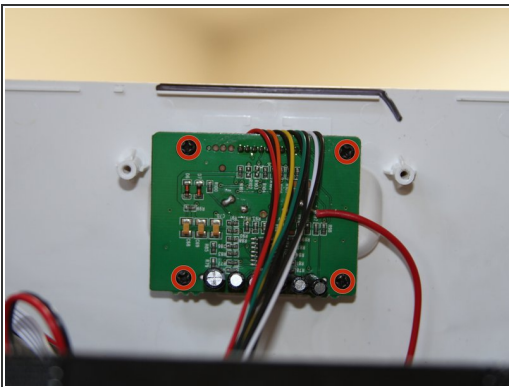


## Step 3



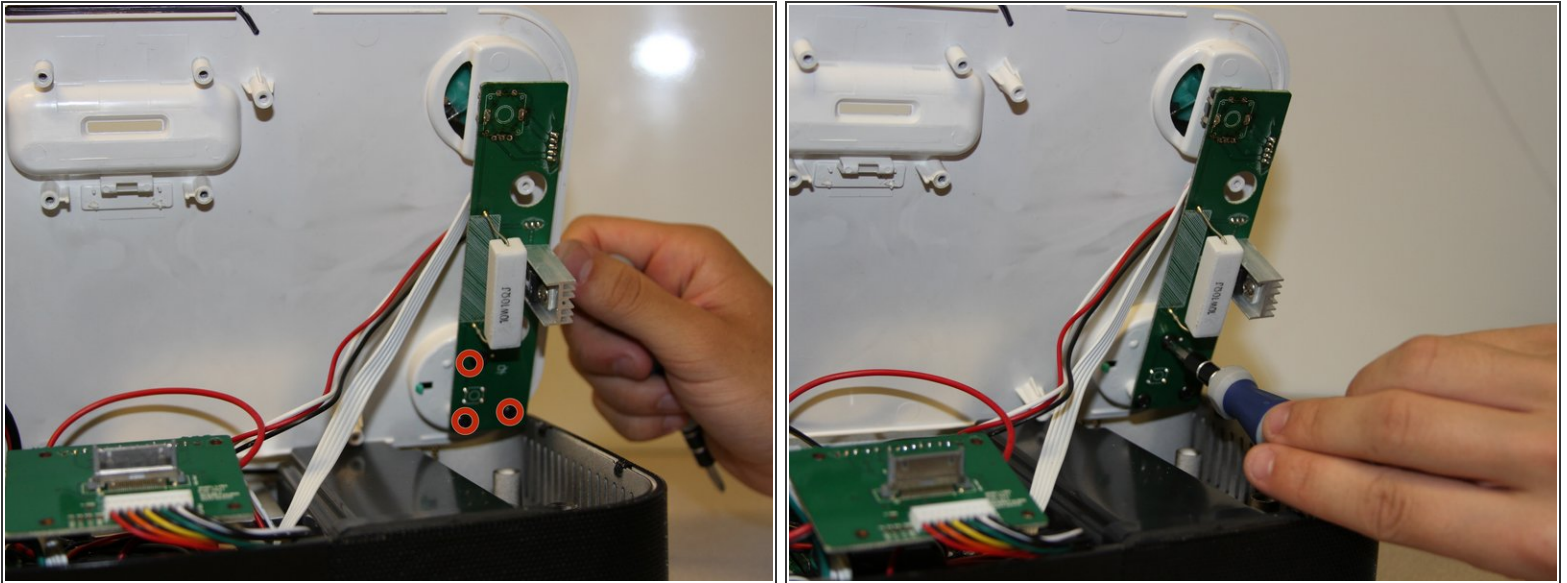
- Flip the Luna back over so that the buttons are facing upward and the LCD screen is facing you.
- Gently tilt the lid back 45 degrees so that the inside is exposed.
- ⓘ Be mindful of the wires inside of the Luna. It is easy to break a connection if a wire gets caught.

## Step 4 — Dock Circuit Board



- Unscrew the four black 7mm screws with the Phillips #1 screw driver that hold the middle circuit board to the top case.

## Step 5 — Button Circuit Boards



- Unscrew the three 7 mm black screws using the Philips #1 screwdriver on the back end of the left and right circuit board.
- ⓘ Removing the right circuit board first will make it easier to unscrew the left because the heat-sinks on the left circuit board can get in the way of the screwdriver.

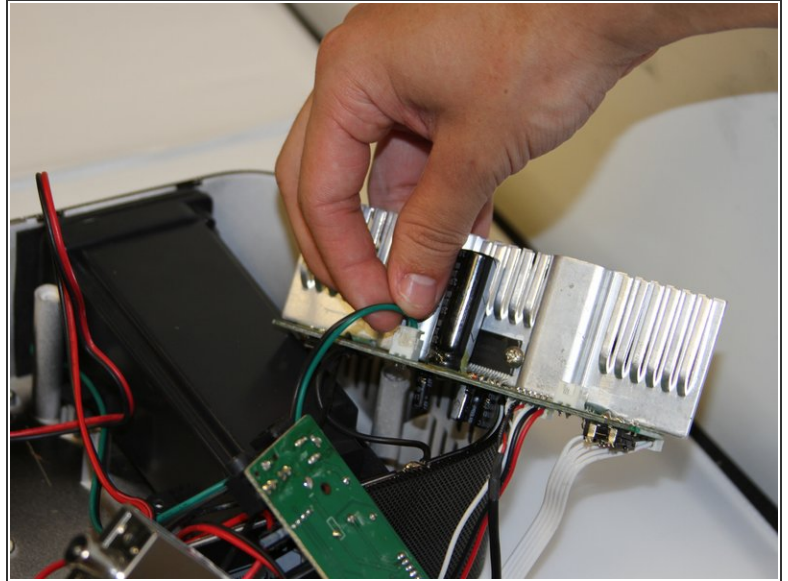
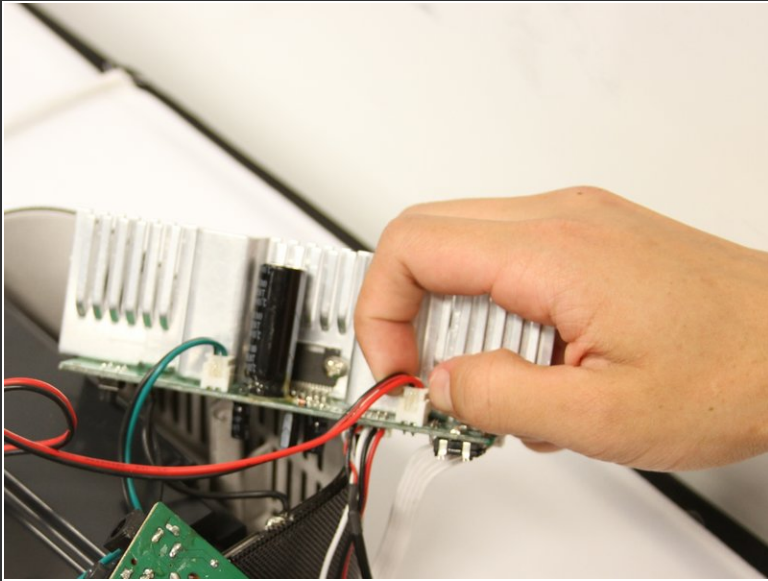
## Step 6



- Use a plastic opening tool to pry the black connections away from the top casing.
- ⓘ Be attentive when you separate the circuit boards from the top, as there is a loose wheel inside.

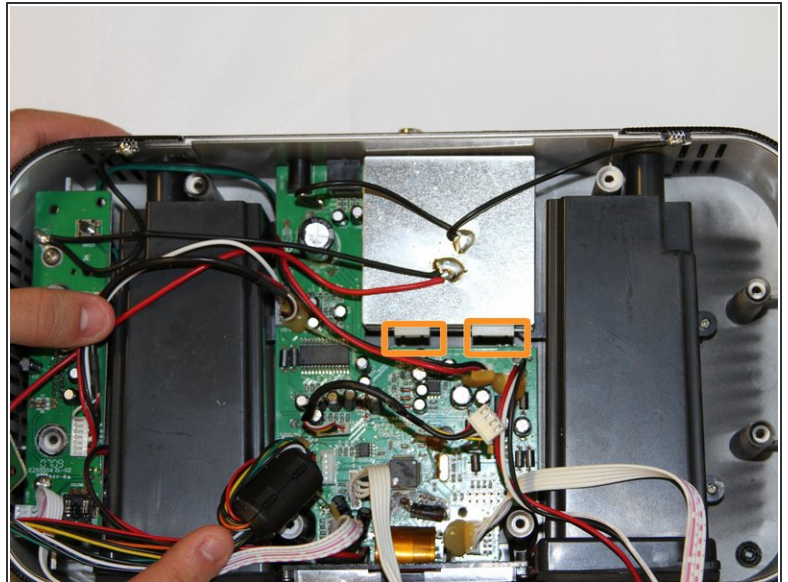
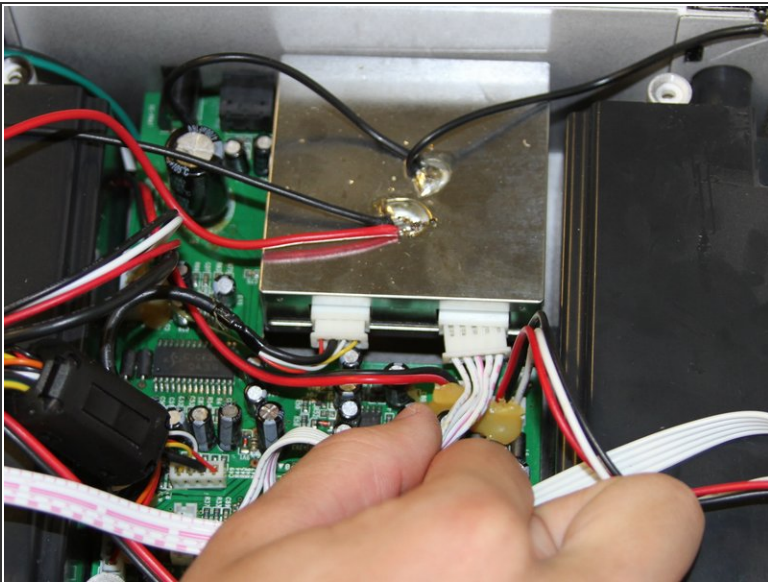


## Step 7



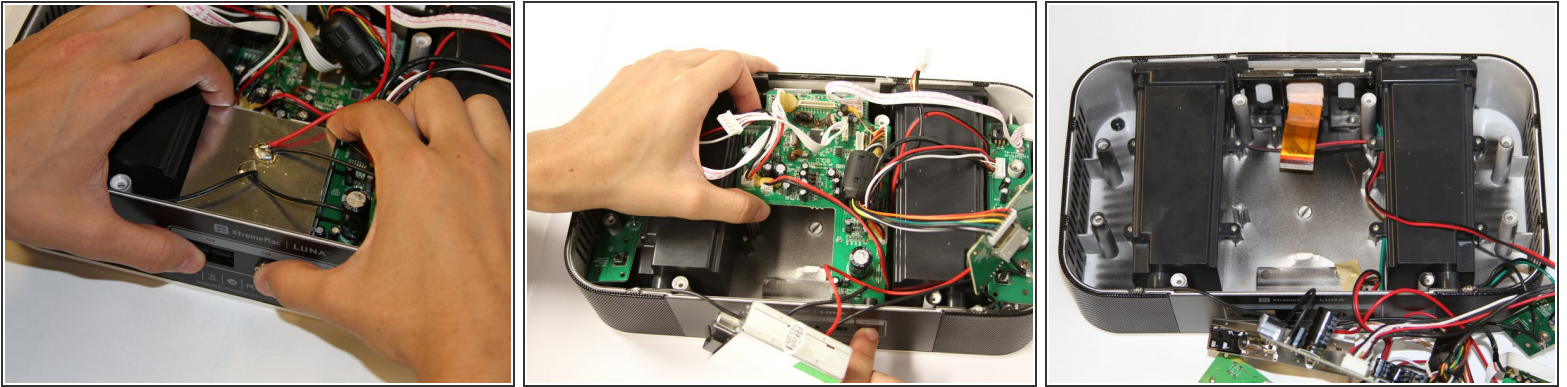
- Turn the circuit boards over. Remove the two connections on the left side by pulling on the tabs.
- ⓘ The glue that holds the connection together will come off when you pull. Pull on the tab with enough force to break the glue without damaging the wires.

## Step 8 — Motherboard



- Disconnect the white cables on the front of the radio jack.

## Step 9



- Carefully remove the radio jack from the casing by pushing on the back connections.
- Gently remove the motherboard from the casing. Be careful with the display housing.

To reassemble your device, follow these instructions in reverse order.