



# Nintendo Wii Remote Main Buttons Replacement

How to remove the main buttons from the Wii Remote.

Written By: Emily



## INTRODUCTION

Removing the main buttons requires opening the device. The main buttons include all buttons except the trigger style B button.

---

### TOOLS:

- [iFixit Opening Tools](#) (1)
  - [Y1 Tri-point Screwdriver](#) (1)
-

## Step 1 — Front Cover Plate and Batteries



- Flip the Wii Remote over so the battery cover faces you.
- Push up on the bottom tab.
- Remove the battery cover.

## Step 2



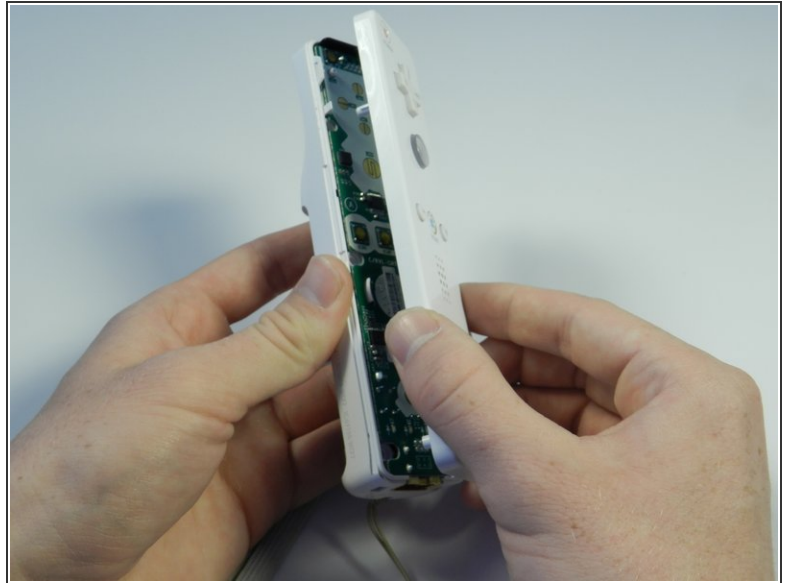
- Remove the first battery by pressing down on the positive end and pulling the battery out.
- Remove the second battery by pushing up on the positive end and pulling the battery out.

## Step 3



- Using a tri-point Y1 Screwdriver, remove the two center 7mm screws by turning them counterclockwise.
- Repeat with the two bottom screws.

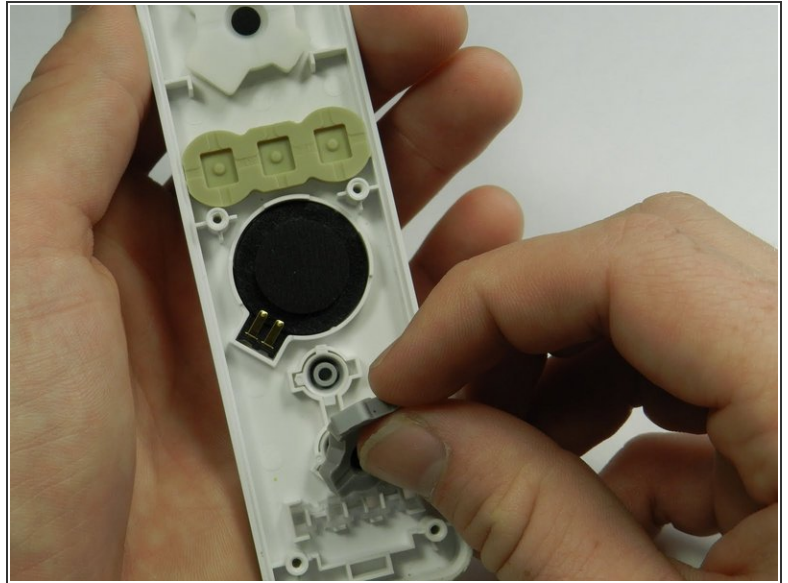
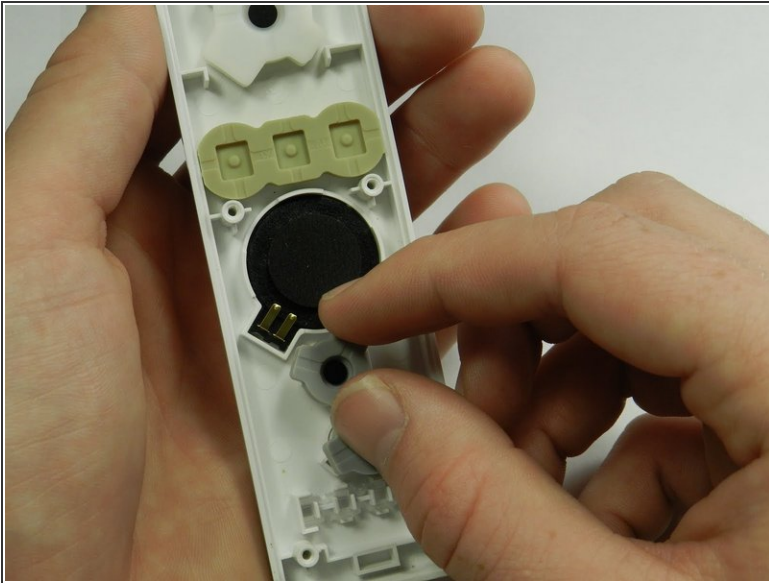
## Step 4



- With the flat end of a spudger, gently apply pressure to the tabs located on left side of the controller.
  - ⓘ These tabs are breakable. However, if the tabs are broken the controller will still function.
- Open the front plate like a book.
  - ⚠ Small parts may fall out as you open the front plate.

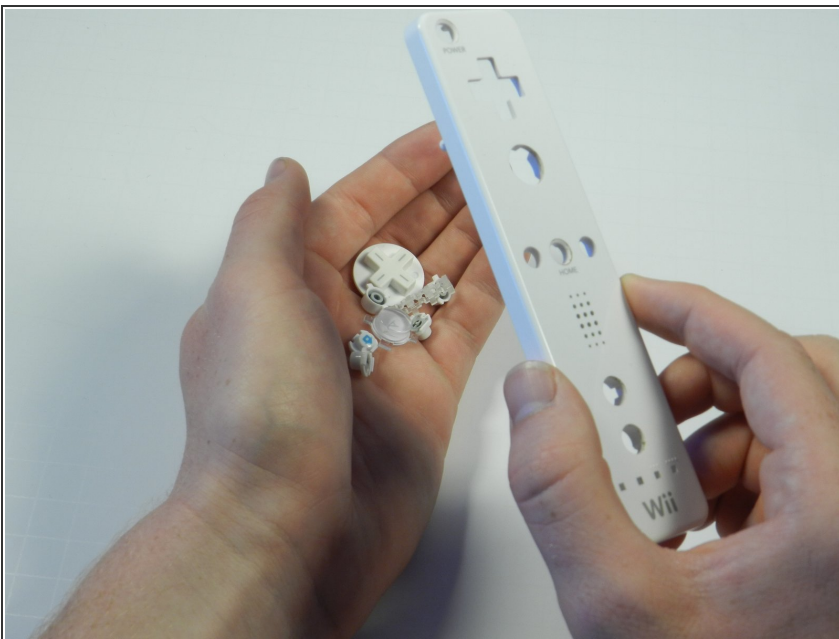


## Step 5 — Main Buttons



- Working on the inside of the front cover, peel off the three rubber pads covering the buttons.

## Step 6



- Flip over the cover, allowing the buttons to fall into your hand.
- ⓘ Be ready to catch all the buttons, some are very small. If a button does not fall out apply gentle pressure from behind.
- ★ When reassembling, put each plastic button in its allocated slot. Each button only fits snugly in one slot.
- ⓘ The best option for you is rotate the Wii Controller by 180°. If you obey this note, the small parts won't fall off and then you can remove the buttons.

To reassemble your device, follow these instructions in reverse order.