



# Dell Latitude 3190 M.2 SSD Replacement

If your Dell Latitude 3190 laptop is showing...

Written By: Daniel Tzunum



# INTRODUCTION

If your Dell Latitude 3190 laptop is showing the black screen of death, taking a long time to startup or is slow to load applications, use this guide to replace or upgrade your M.2 SSD for the Dell Latitude.

An SSD is a solid-state drive that uses flash memory to store data in your computer. An SSD provides the computer with better performance and energy consumption.

The laptop's SSD needs to be upgraded or replaced if the computer is lacking in performance or it is slow to startup and load.

Before starting this repair, power off your device and unplug from the charger.



## TOOLS:

[iFixit Opening Tool](#) (1)

[Phillips #0 Screwdriver](#) (1)



## PARTS:

[Crucial P3 NVMe PCIe M.2 2280SS SSD](#) (1)

[Crucial P3 Plus NVMe PCIe M.2 2280SS SSD](#) (1)

[Crucial P5 Plus PCIe M.2 2280SS SSD](#) (1)

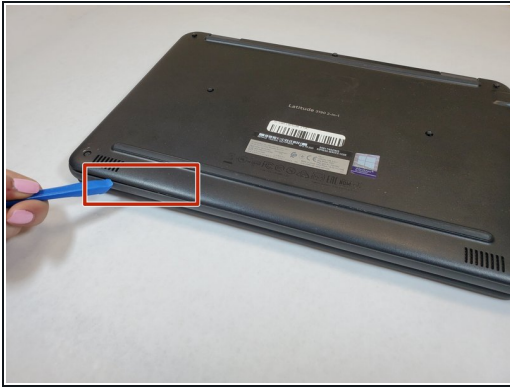
## Step 1 — Base Cover



- Use a Phillips #0 screwdriver to remove the seven 7 mm screws securing the back case.

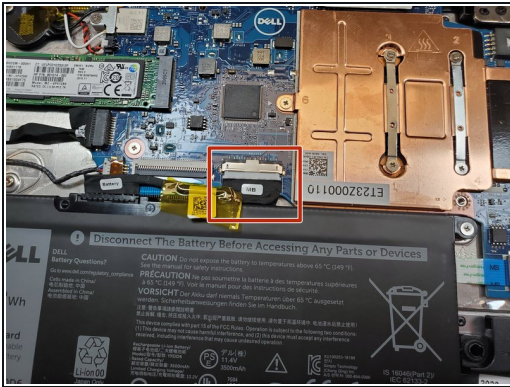


## Step 2



- Using a plastic opening tool carefully separate the plastic base cover from the rest of the laptop.
- Lift the bottom cover from the laptop.

## Step 3 — M.2 SSD



- Use a spudger to disconnect the battery cable from the motherboard located at the top of the battery.

## Step 4



- Locate the M.2 SSD after the battery is removed
- Use the Phillips #0 screwdriver to remove the 3 mm screw from the SSD.
- Pull the M.2 SSD from the board.

To reassemble your device, follow these instructions in reverse order.