



Removing the Dell Inspiron 1150 Optical Drive (Based on Dell Manual)

Written By: Richdave



INTRODUCTION

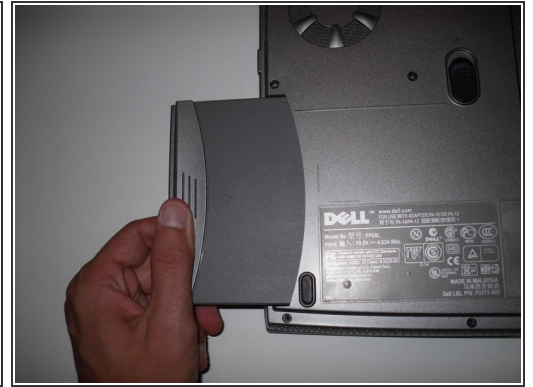
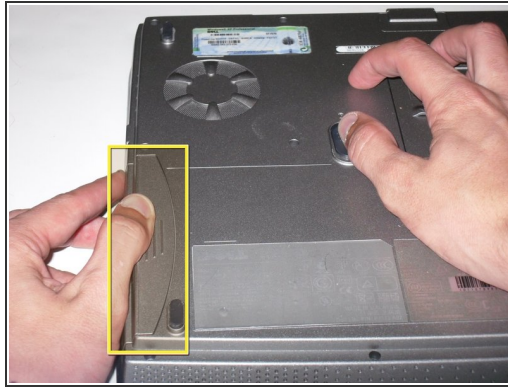
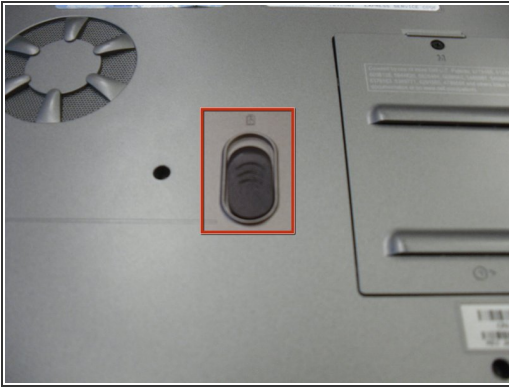
This guide is base on the official service manual which I have attached to the device page and has been created using photos contained in other iFixit guides.



TOOLS:

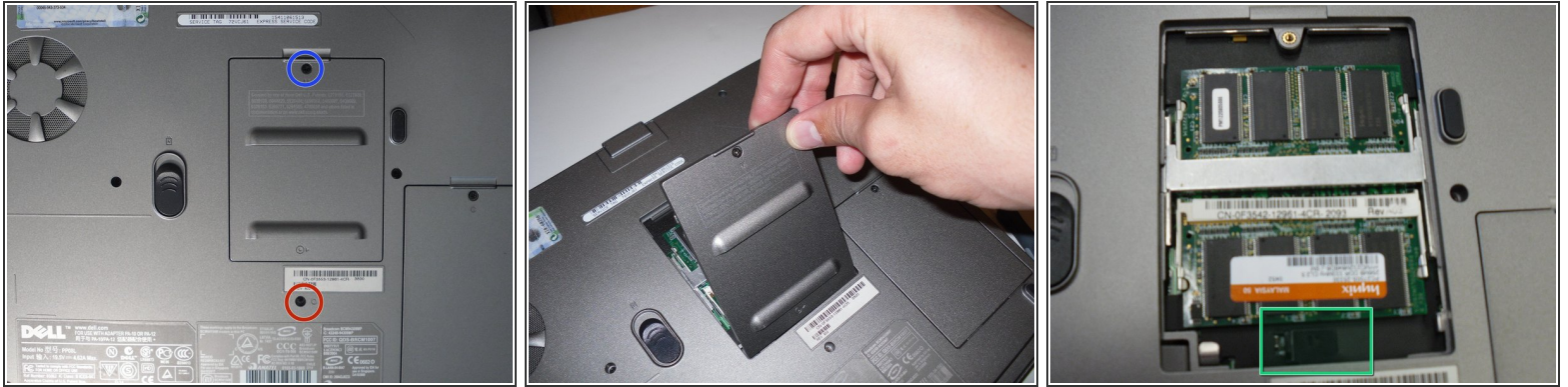
- [Phillips #1 Screwdriver](#) (1)
-

Step 1 — Removing Dell Inspiron 1150 Battery



- Place the laptop upside down on a clean, flat surface.
- Locate the battery release button with the padlock symbol above it.
- Slide the battery release button towards the padlock symbol and hold it there. Note that the button is spring loaded and will return if released.
- ⓘ The battery is now released from the battery compartment.
- Gently remove the battery from the side of the laptop.

Step 2 — Optical Drive (Based on Dell Service Manual)



- Place laptop upsid down on a clean flat work surface.
- Remove the Philips M2.5 x 8 mm screw
- Loosen the screw that holds the memory compartment closed
- remove the memory module compartment cover
- Press the Optical Drive release lever to the right and the optical drive should slide out of the case

To reassemble your device, follow these instructions in reverse order.