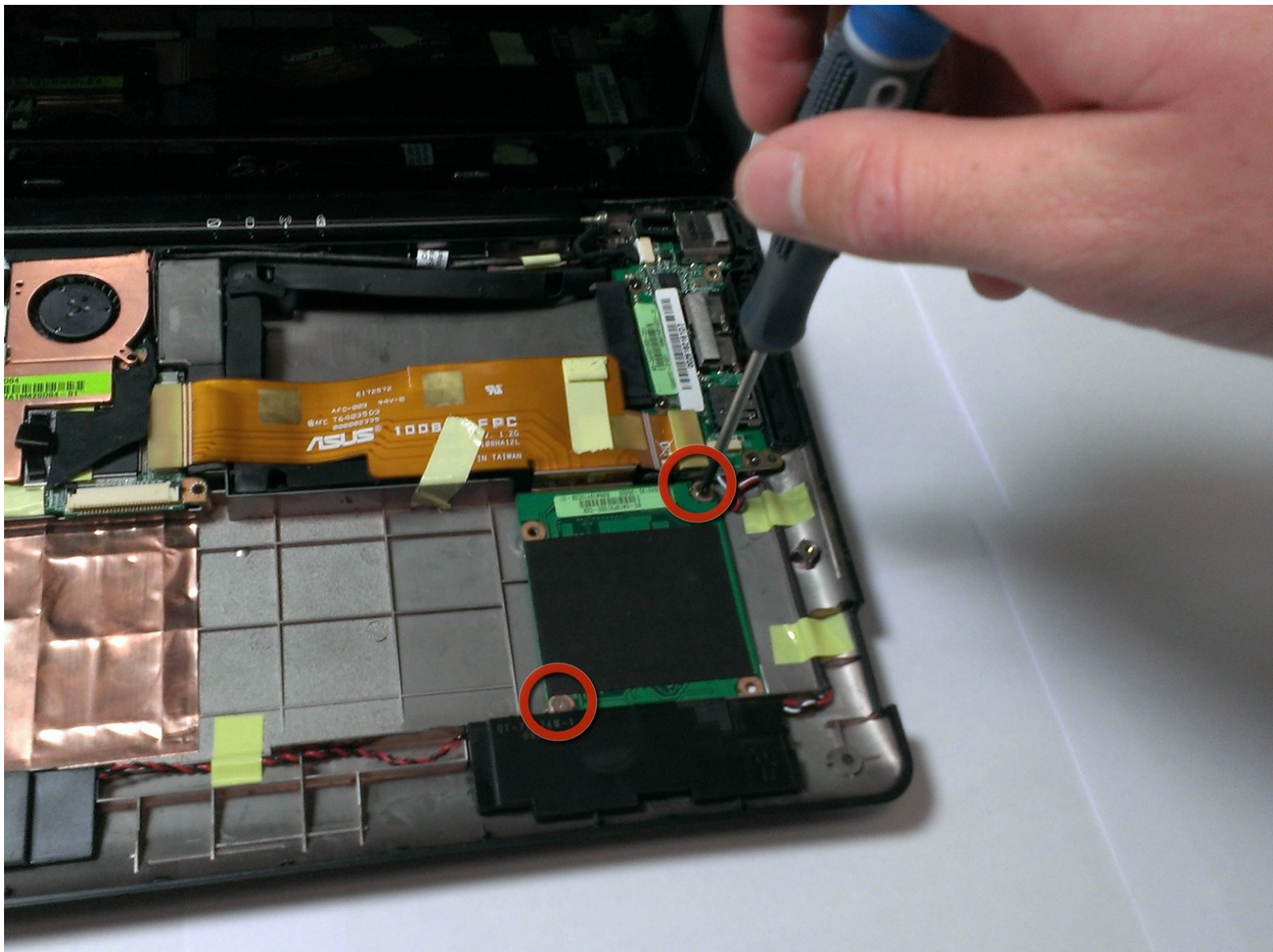




# Asus Eee PC 1008ha Graphics Card Replacement

This is a guide to replace the graphics card in your Asus Eee PC 1008ha.

Written By: Alex Powers



## INTRODUCTION

You will be the remove of the battery and continue to cautiously take the graphics card off of the laptop. This installation would be necessary if a user has a fried, defected, or inoperative in general.



### TOOLS:

- [Flathead 3/32" or 2.5 mm Screwdriver](#) (1)
- [Phillips #00 Screwdriver](#) (1)



### PARTS:

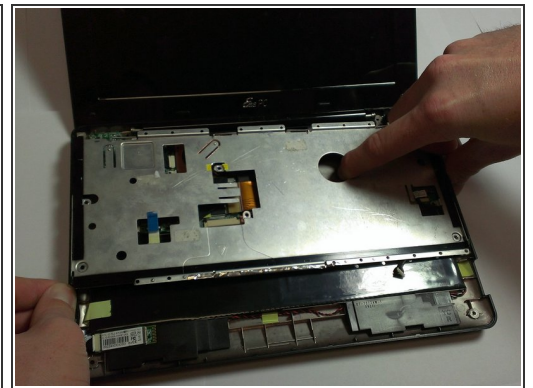
- [Replacement Graphics Card](#) (1)

## Step 1 — Battery



- Using the plastic opening tool, carefully pry the top panel from the base.

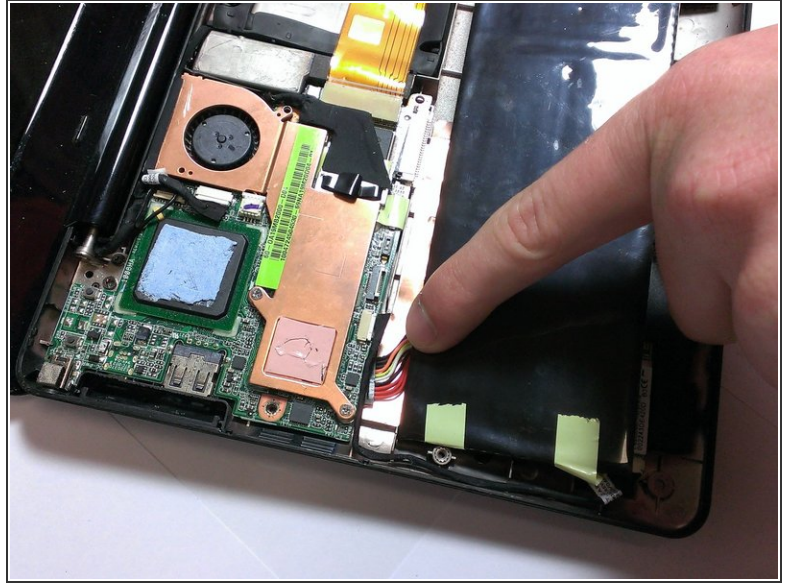
## Step 2



- Lift the side of the keyboard.
- Disconnect the attached ribbon located underneath the keyboard.
- Place your index finger in the hole on the right side of the keyboard tray and lift the tray.

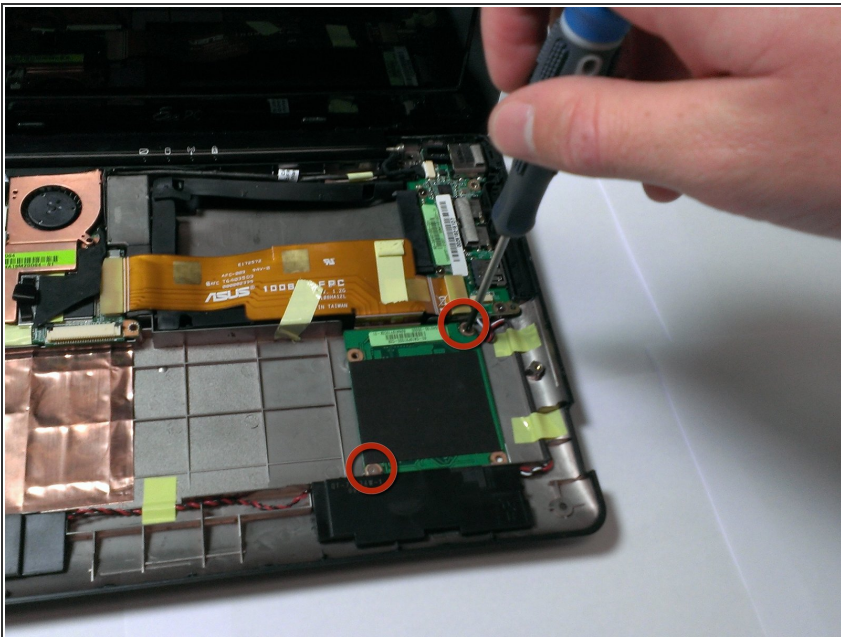


### Step 3



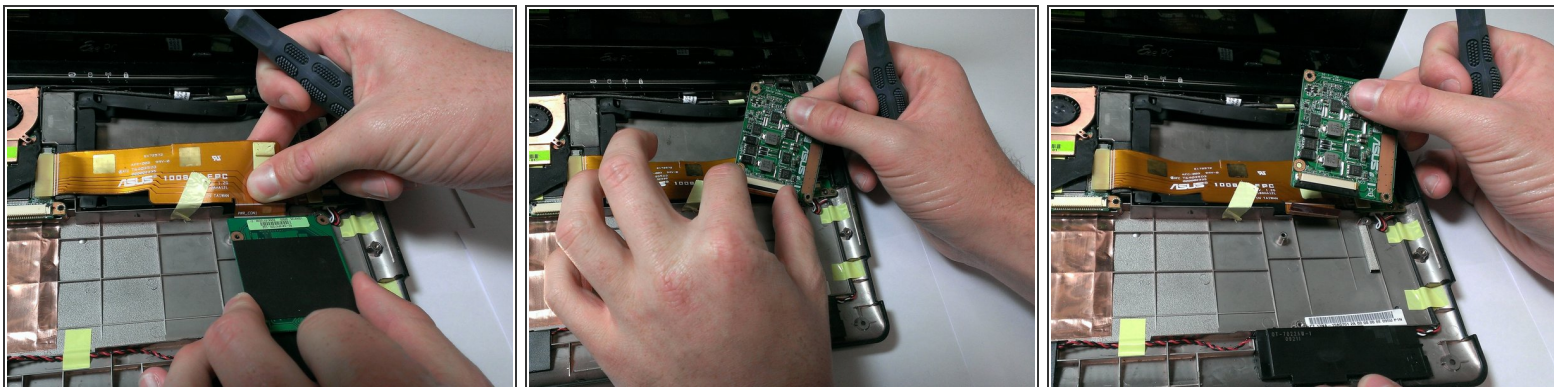
- Use your fingers to lift the battery and gently disconnect the wires from the base.

### Step 4 — Graphics Card



- Remove the two 2mm screws from the graphics card.

## Step 5



- Flip over the graphics card.
- Pull the black plastic locking mechanism towards the golden ribbon to unlock.
- Pull out the ribbon.

To reassemble your device, follow these instructions in reverse order.