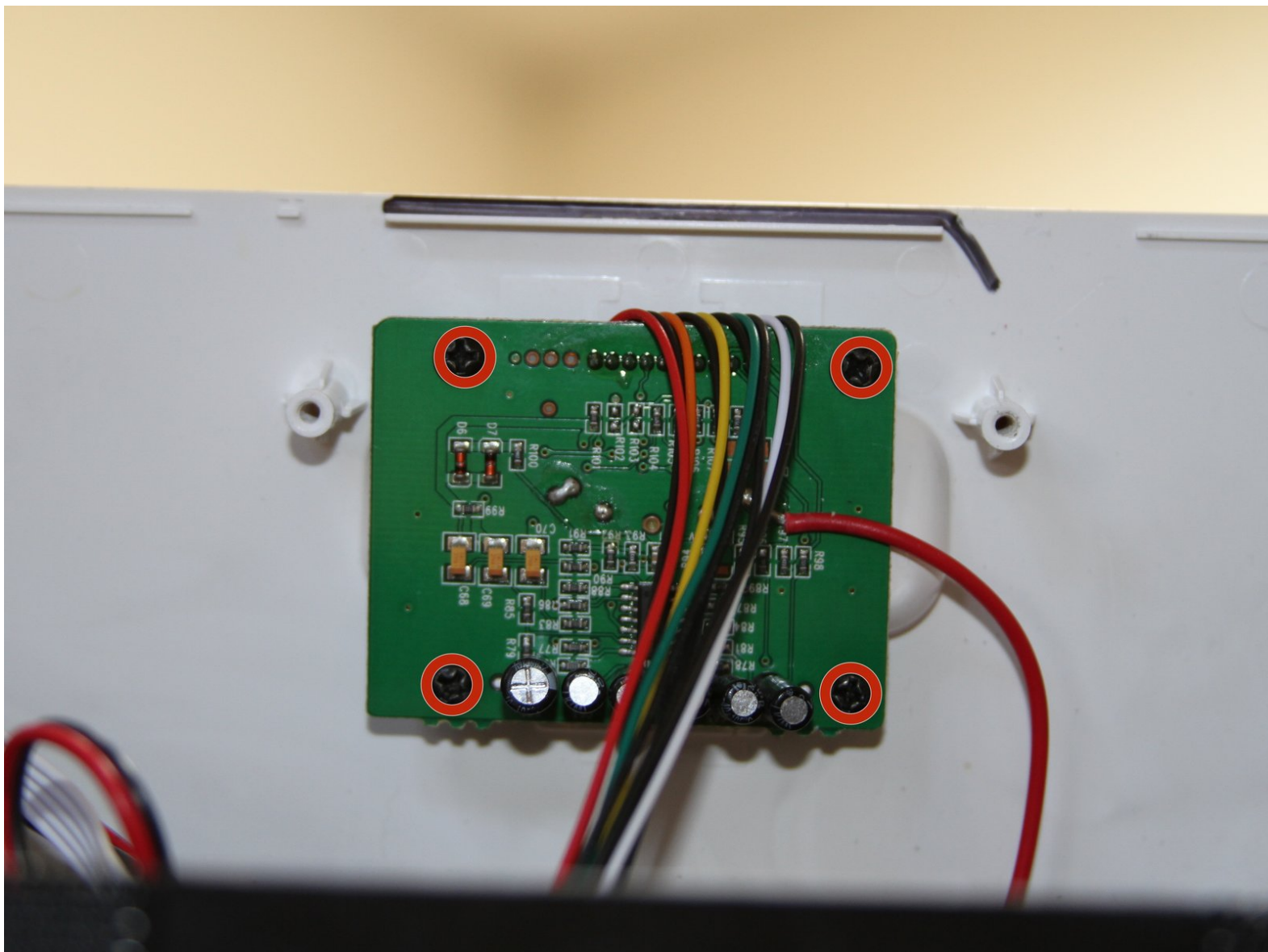




XtremeMac Luna Dock Circuit Board Replacement

This guide will describe how to detach the dock circuit board from the top panel.

Written By: Matt Ducasse



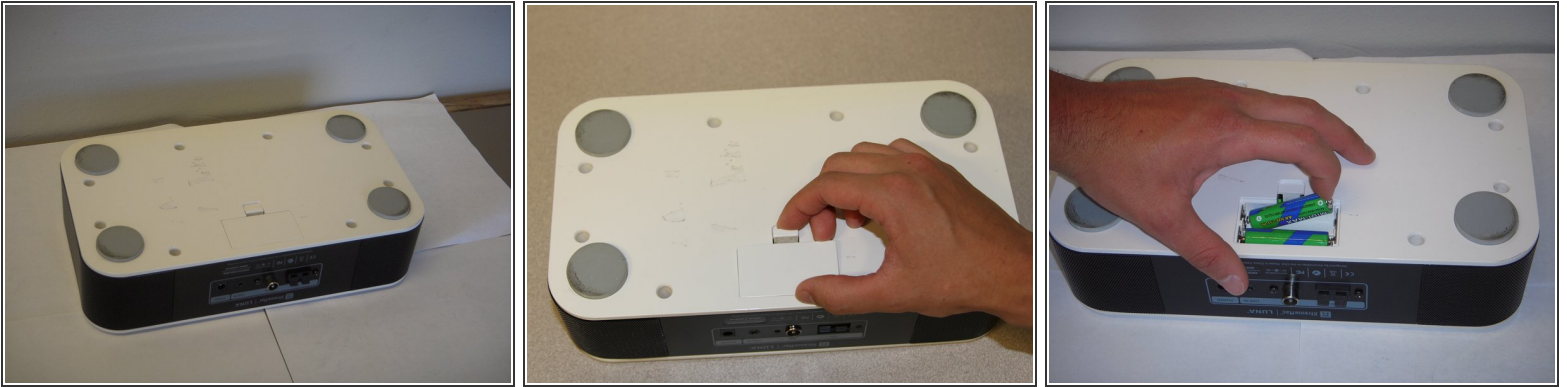
INTRODUCTION

If your iPod won't connect to the Luna while docked, the dock may be faulty. Follow this guide to replace the dock circuit board.

TOOLS:

- [Phillips #1 Screwdriver](#) (1)
-

Step 1 — Bottom Panel



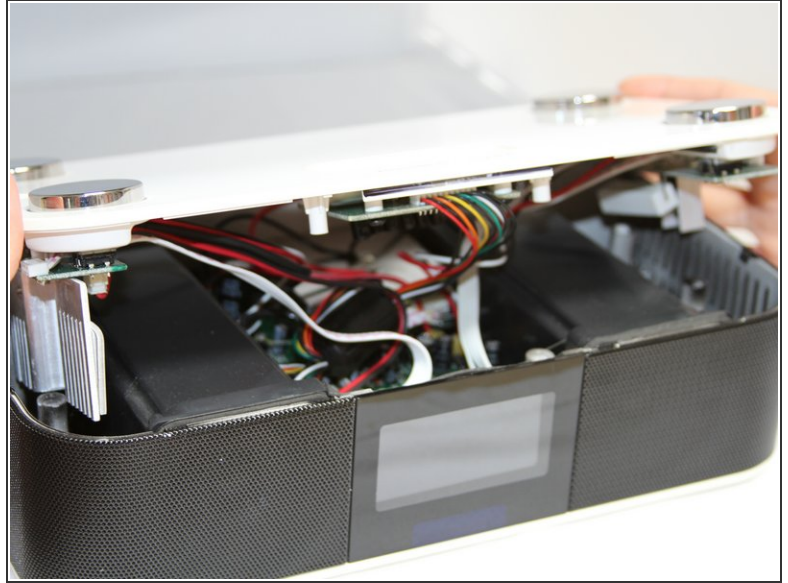
- Flip the device over so that the batteries are closest to you.
- Remove the battery lid by pressing the battery cover's tab and pulling it away from the device.
- Push the battery against the spring and lift it out of the casing.
- Repeat with the other battery.

Step 2



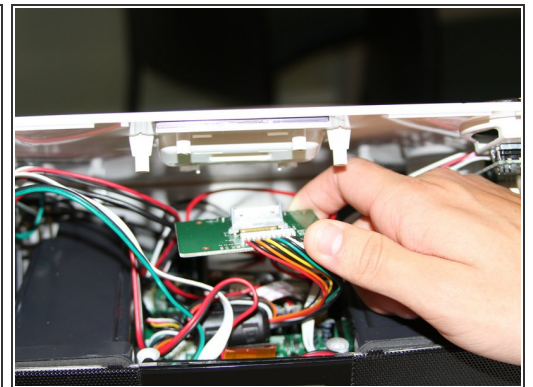
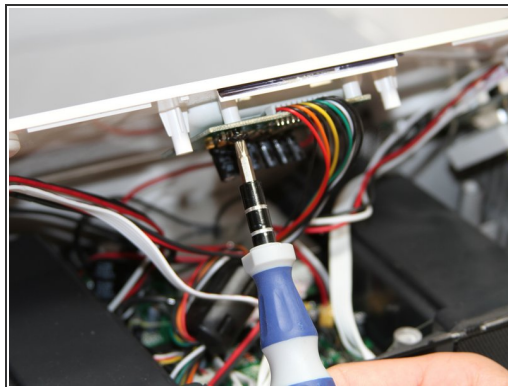
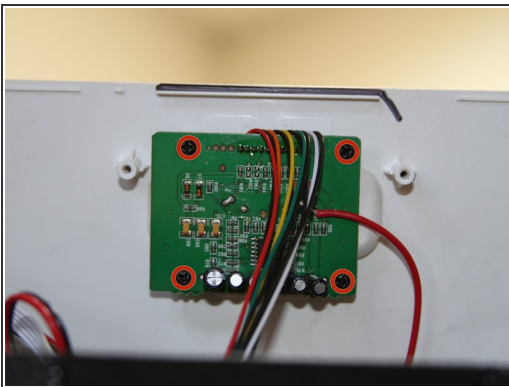
- Unscrew all eight 12mm Phillips head screws with a Philips #1 screwdriver.
- ⓘ The iFixit 26 bit screwdriver kit will not reach the screws. Make sure to use a screwdriver that is thin enough to not get stuck in the screw holes.

Step 3



- Flip the Luna back over so that the buttons are facing upward and the LCD screen is facing you.
- Gently tilt the lid back 45 degrees so that the inside is exposed.
- ⓘ Be mindful of the wires inside of the Luna. It is easy to break a connection if a wire gets caught.

Step 4 — Dock Circuit Board



- Unscrew the four black 7mm screws with the Phillips #1 screw driver that hold the middle circuit board to the top case.

To reassemble your device, follow these instructions in reverse order.