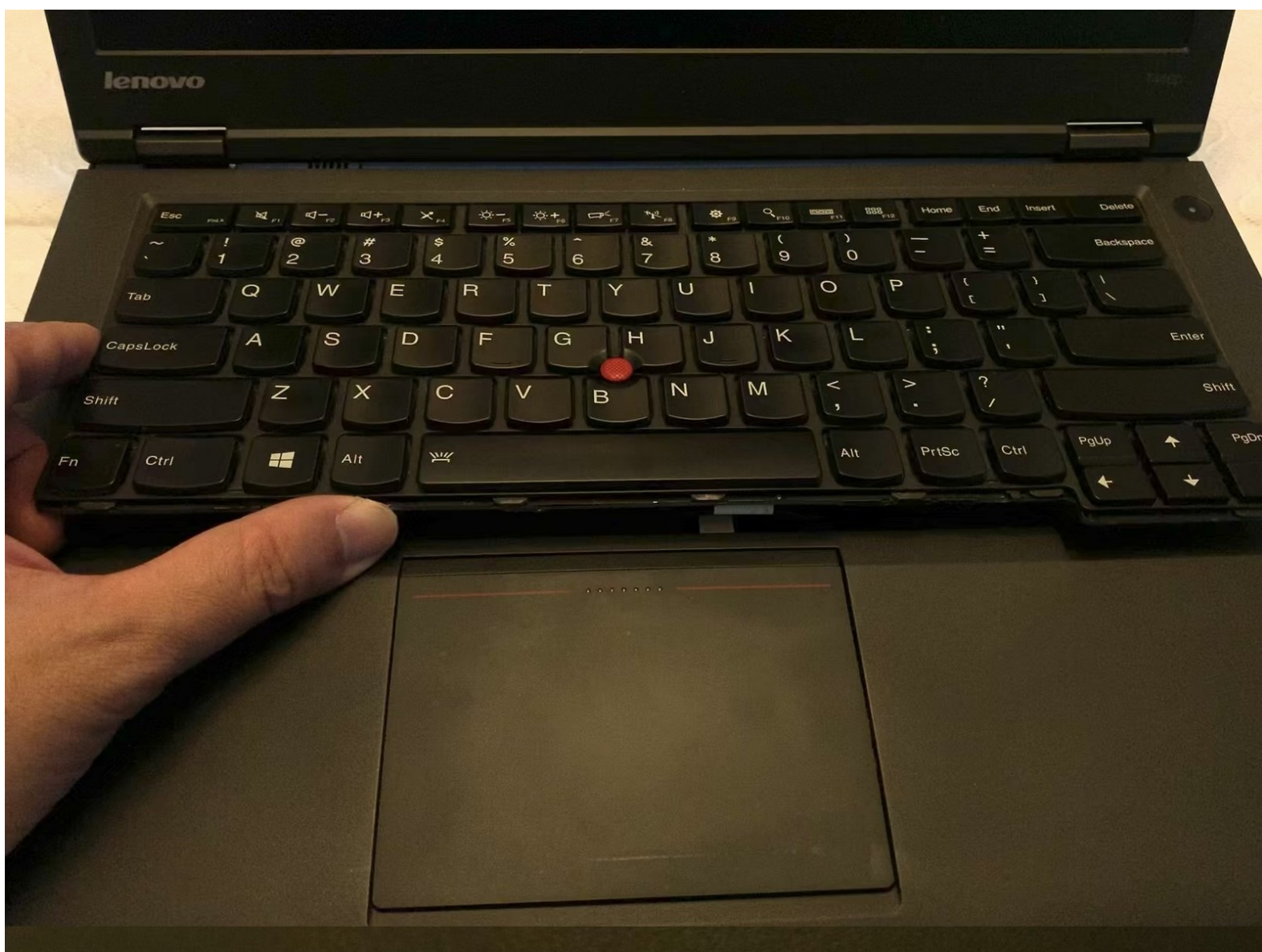




Lenovo ThinkPad T440p Keyboard and/or Palmrest/Fingerprint Reader Replacement

Step-by-step guide to replacing your Lenovo ThinkPad T440p's keyboard and/or palmrest (with or without fingerprint reader).

Written By: Nhan Nguyen



INTRODUCTION

If you need or want to replace the keyboard, palmrest, and/or fingerprint reader on your Lenovo ThinkPad T440p, this guide will show you how. If you only need to replace the keyboard, you can just follow the first four steps of this guide. Otherwise, proceed through all steps of the guide to install a new palmrest and/or fingerprint sensor.



TOOLS:

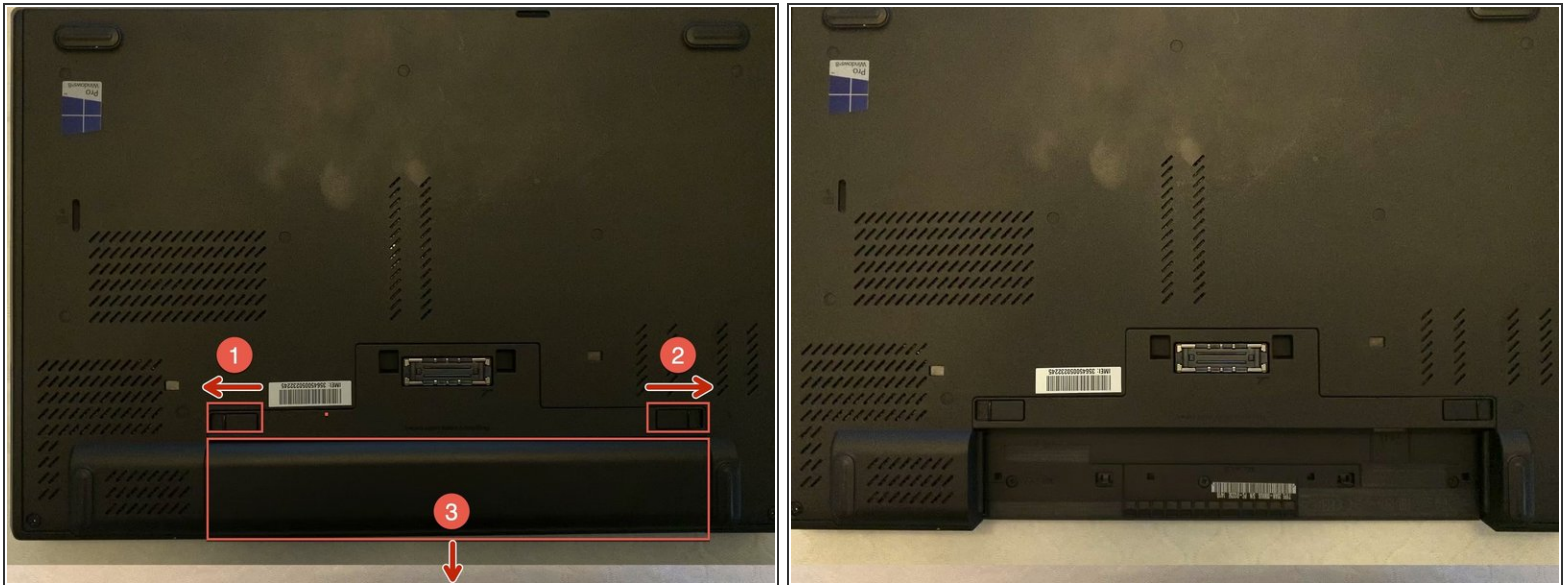
- [Phillips #0 Screwdriver](#) (1)
- [Spudger](#) (1)
- [iFixit Opening Picks \(Set of 6\)](#) (1)



PARTS:

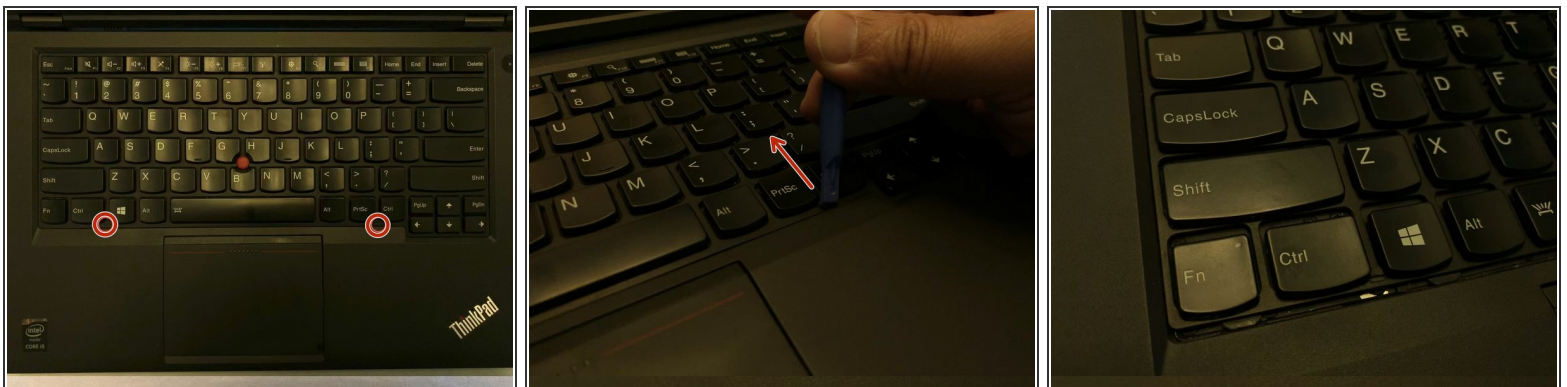
- [ThinkPad T440p palmrest](#) (1)
- [Lenovo Keyboard - 04Y0824](#) (1)

Step 1 — Remove the battery



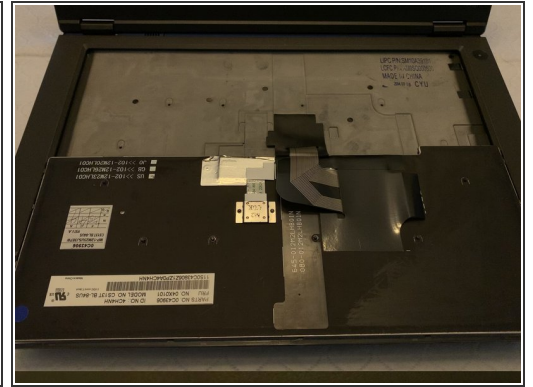
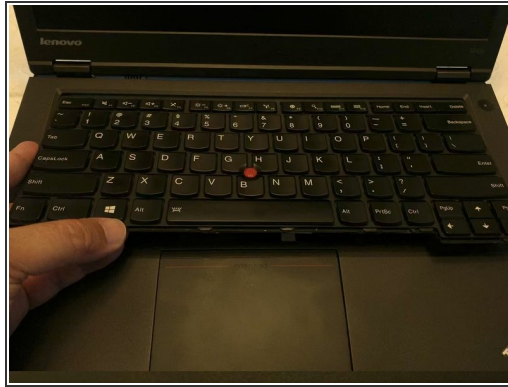
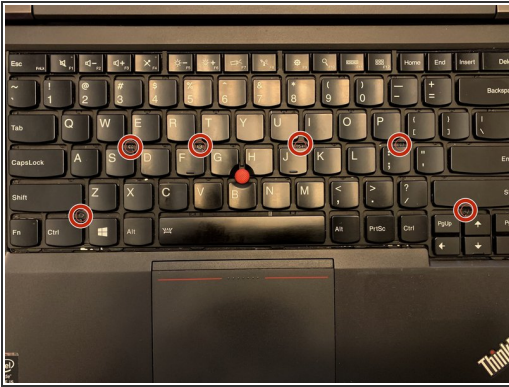
- Shut down the computer, then close it, flip it over, and remove the battery by pushing the two spring-loaded locks toward the outside of the laptop.
- Once both are unlocked, the battery can be pulled away from the laptop and set aside.

Step 2 — Begin removing the keyboard



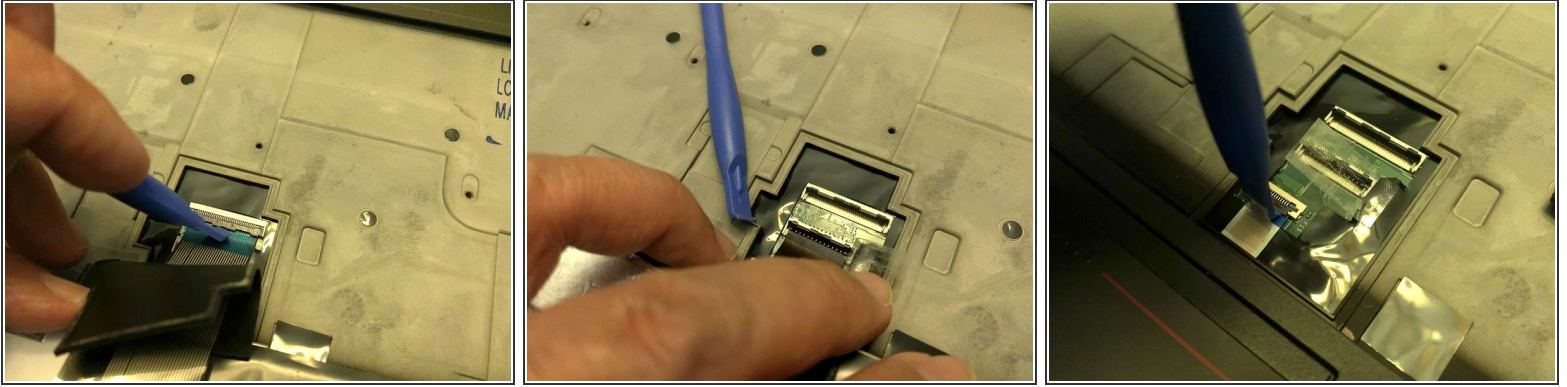
- Flip the computer back over and open the display.
- Just beneath the bottom row of keys are two small notches: the left one is below the Ctrl and Windows keys, and the right one is below the PrtSc and Ctrl keys. (U.S. keyboard layout)
- Use a plastic spudger to carefully push these notches toward the display, which will expose hidden screws you'll loosen in the next step.

Step 3 — Detach the keyboard, part 1



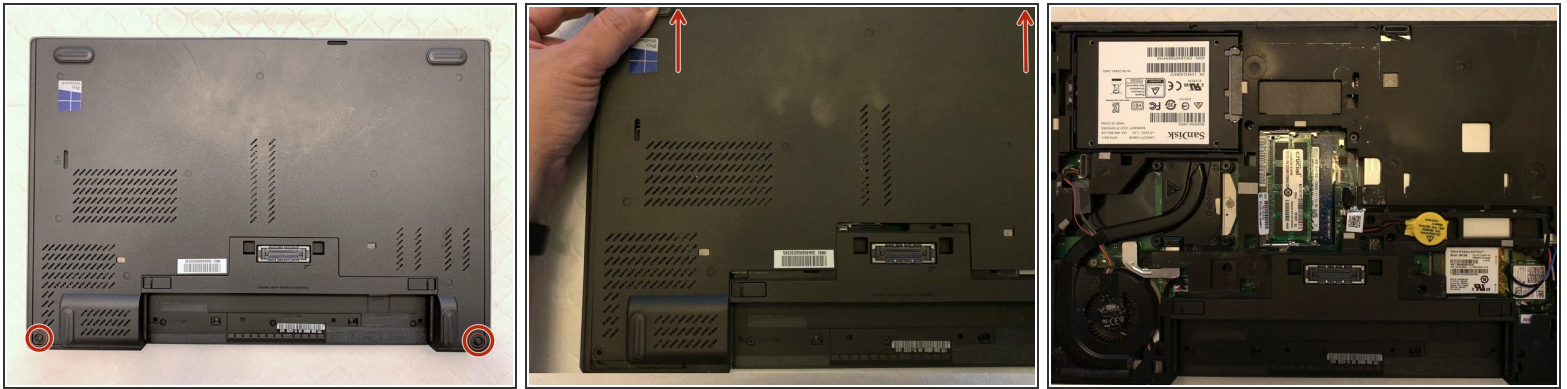
- Loosen the six screws shown in the photo (they are designed to not be removed).
 - i** Note: you may hear a little "pop" or "snap" noise with each loosened screw as the keyboard detaches from the rest of the laptop.*
 - Carefully lift out the keyboard from the front edge, then flip the top edge of the keyboard toward you and lay the keyboard face down over the touchpad.
- ⚠** The keyboard is still attached to the motherboard via two ribbon cables hidden, which you will detach in the next step. Please take care to not pull at these ribbon cables when flipping the keyboard toward you.

Step 4 — Detach the keyboard, part 2



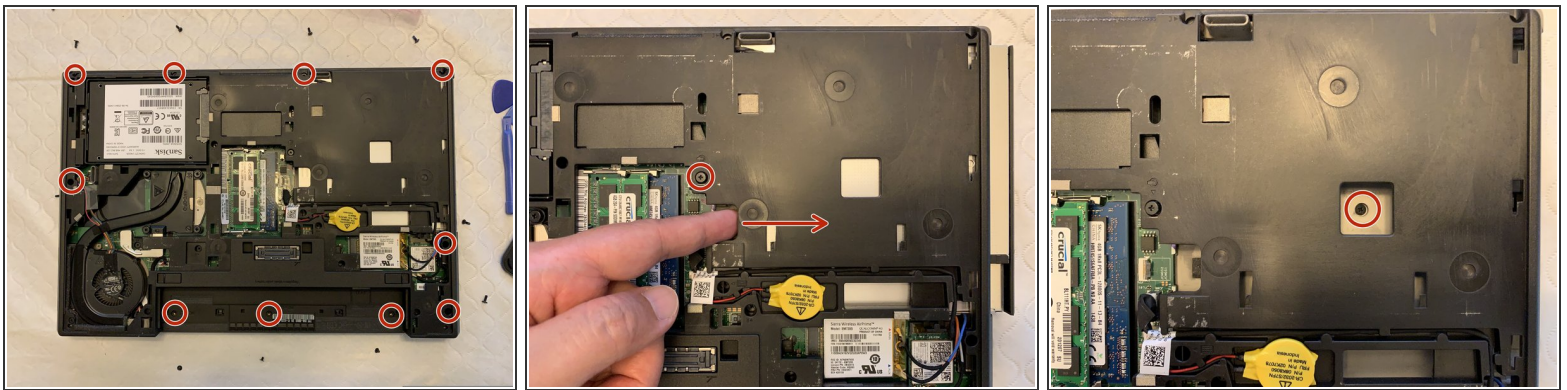
- Gently lift up the black rubber cover, then use a spudger to lift up the first and second of three latches securing the ribbon cables beneath it.
- ⓘ *Note: only detach the third ribbon cable (seen in the third photo) if you are planning to replace the palmrest.*
- Gently pull the keyboard and its two attached ribbon cables away from the laptop.
- ⓘ *If you only need to install/replace the keyboard, you can follow these steps in reverse to complete the job. Otherwise, proceed to the next step.*

Step 5 — Remove bottom cover (aka "big door")



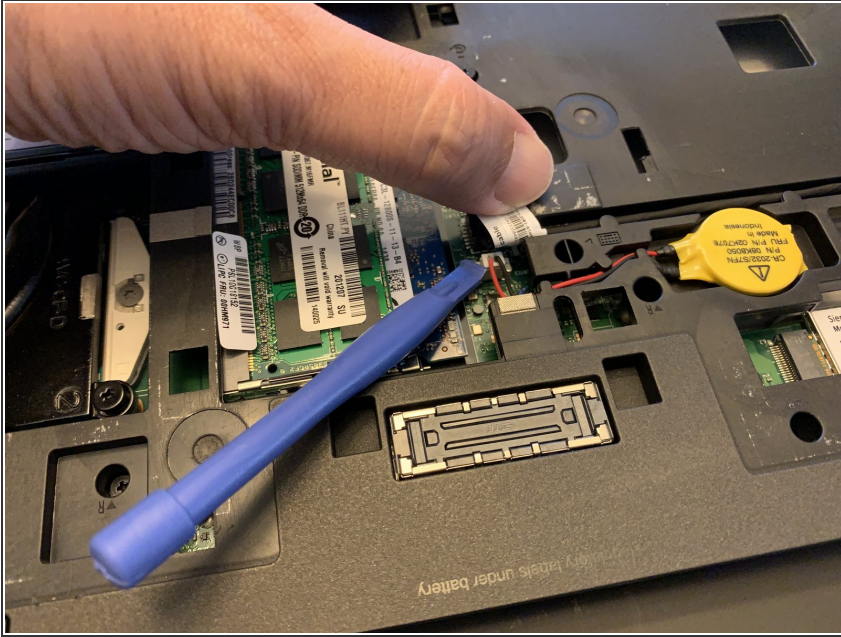
- Close the laptop lid, then flip it over.
- One screw on each bottom corner flanking the battery compartment must be removed.
- Once removed, press the front footrests toward the front of the laptop to loosen the cover. It can then be lifted off the body of the laptop.

Step 6 — Remove screws securing the palmrest



- Around the outer edge of the laptop's underside, unscrew 10 screws with the label "C" next to them.
- Unscrew the optical drive securing screw (it will loosen but not come out), then pull out the optical drive.
- Through the square hole, remove the last securing screw.

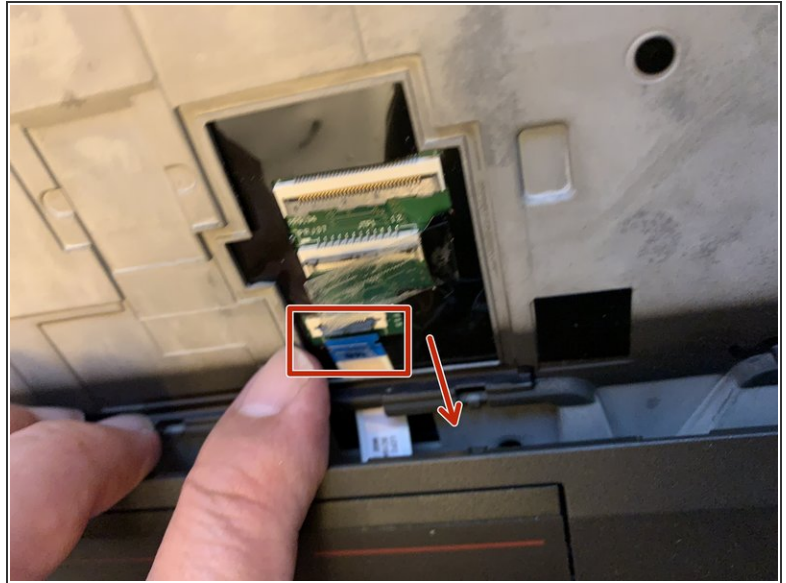
Step 7 — Disconnect the CMOS battery (optional)



- Some say it's safest to disconnect this battery before working on your computer. You can use a spudger to unplug its white connector from the motherboard.

i *Note: you will have to reset the date and time in your BIOS when you restart your computer.*

Step 8 — Remove palmrest (aka "keyboard bezel")



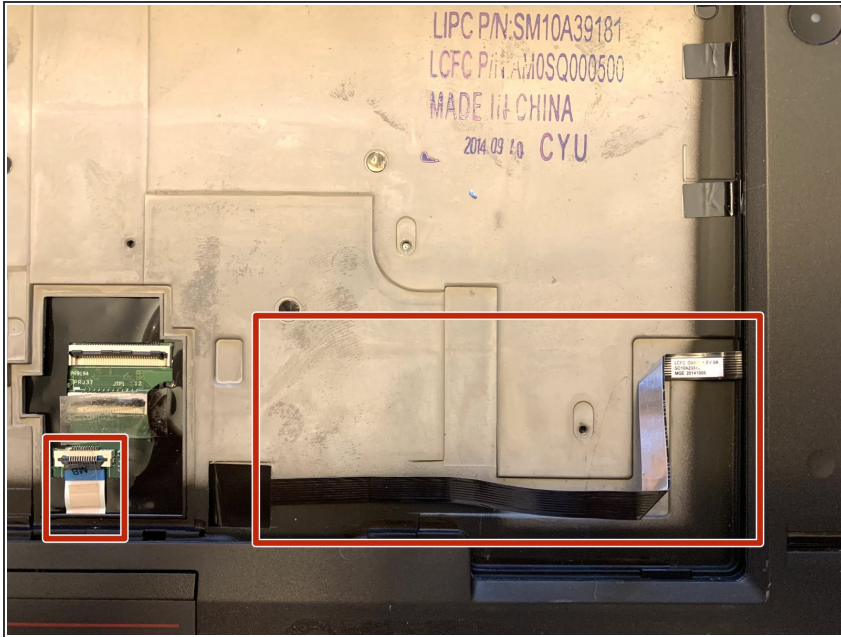
- To be safe, reattach the laptop bottom cover, then flip the laptop over and open the screen so it lies flat.
 - Use the spudger and guitar picks around the edges of the palmrest to unhook it from the rest of the laptop.
 - ① *If you have multiple guitar picks, they can keep one part of the palmrest separated from the laptop while you work your way around the rest of the laptop with more guitar picks.*
- ⚠ Note:** *if at any point it seems like the palmrest will not detach, you may have missed a screw from the underside in Step 6.*
- Lift up the front edge of the palmrest, then carefully wiggle it loose from under the screen hinge, paying special attention to the touchpad's thin ribbon cable: you need to pull out underneath the black metal keyboard frame.
 - ① *If your new palmrest does not have a fingerprint sensor, you can reverse the steps to reassemble your laptop. Otherwise, please continue to the next step.*

Step 9 — Install the fingerprint sensor, part 1



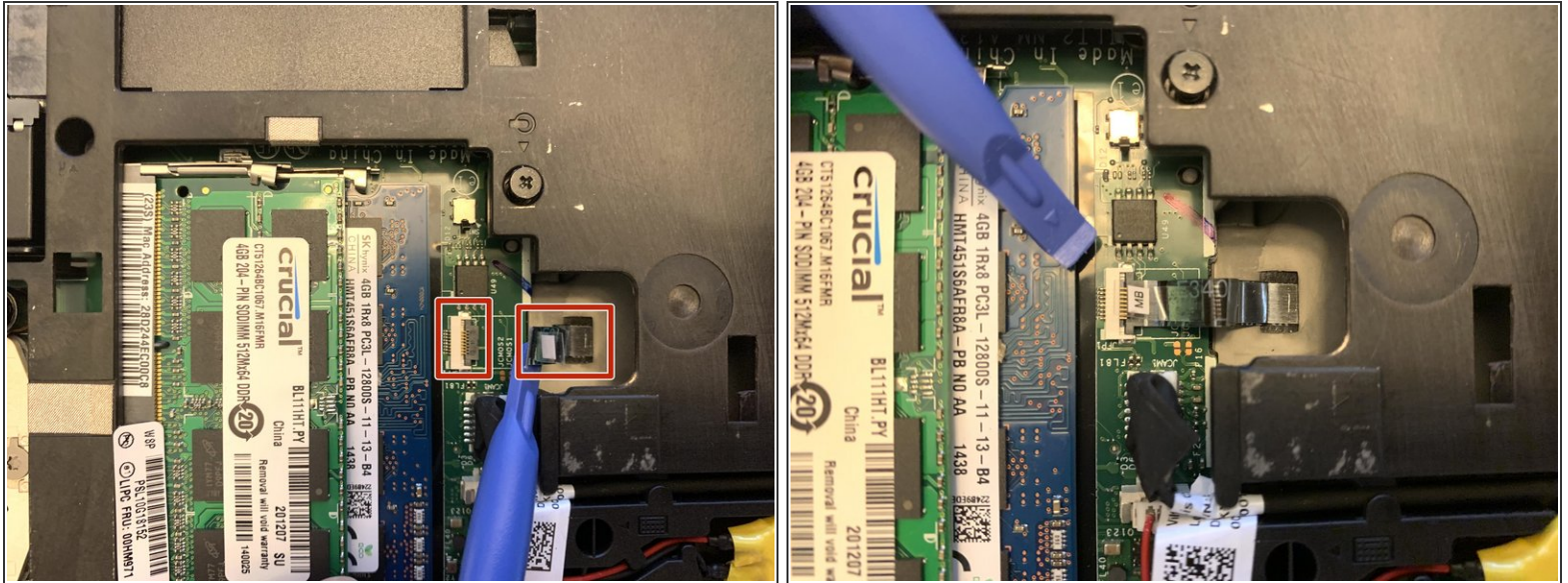
- To the right of the three latches should be a square of black tape. Using a spudger and/or your fingers, lift it up and remove it.
- Your new palmrest with fingerprint sensor will have a long ribbon cable, likely with a black square of tape attached to it. Thread the end of the ribbon cable through the hole, then use the attached square of black tape to keep it in place.

Step 10 — Install the fingerprint sensor, part 2



- Gently insert the top edges of the palmrest under the screen hinges, then lay it down onto the rest of the laptop.
- Carefully slide the touchpad ribbon cable back under the metal frame and latch it back to the motherboard. (I found it easiest to do with a spudger or blunt tweezers on plastic edges of the ribbon cable.)
- Your fingerprint sensor's ribbon cable should already be pre-bent to match grooves in the metal frame below it. Try to position in it that groove as you reattach the palmrest.
- Gently press down around the edges of the palmrest to snap it back into the body of the laptop.

Step 11 — Install the fingerprint sensor, part 3



- Close the lid, then flip the laptop over again.
- ❗ *If you reattached the bottom cover in an earlier step, remove it so you can access the internals of the laptop again.*
- To the right of the RAM slots, you should now see the ribbon cable for the fingerprint sensor you threaded through a hole in an earlier part of this step.
- Insert the end of the ribbon cable into the motherboard and use a spudger to latch it in place.

To reassemble your device, follow these instructions in reverse order.