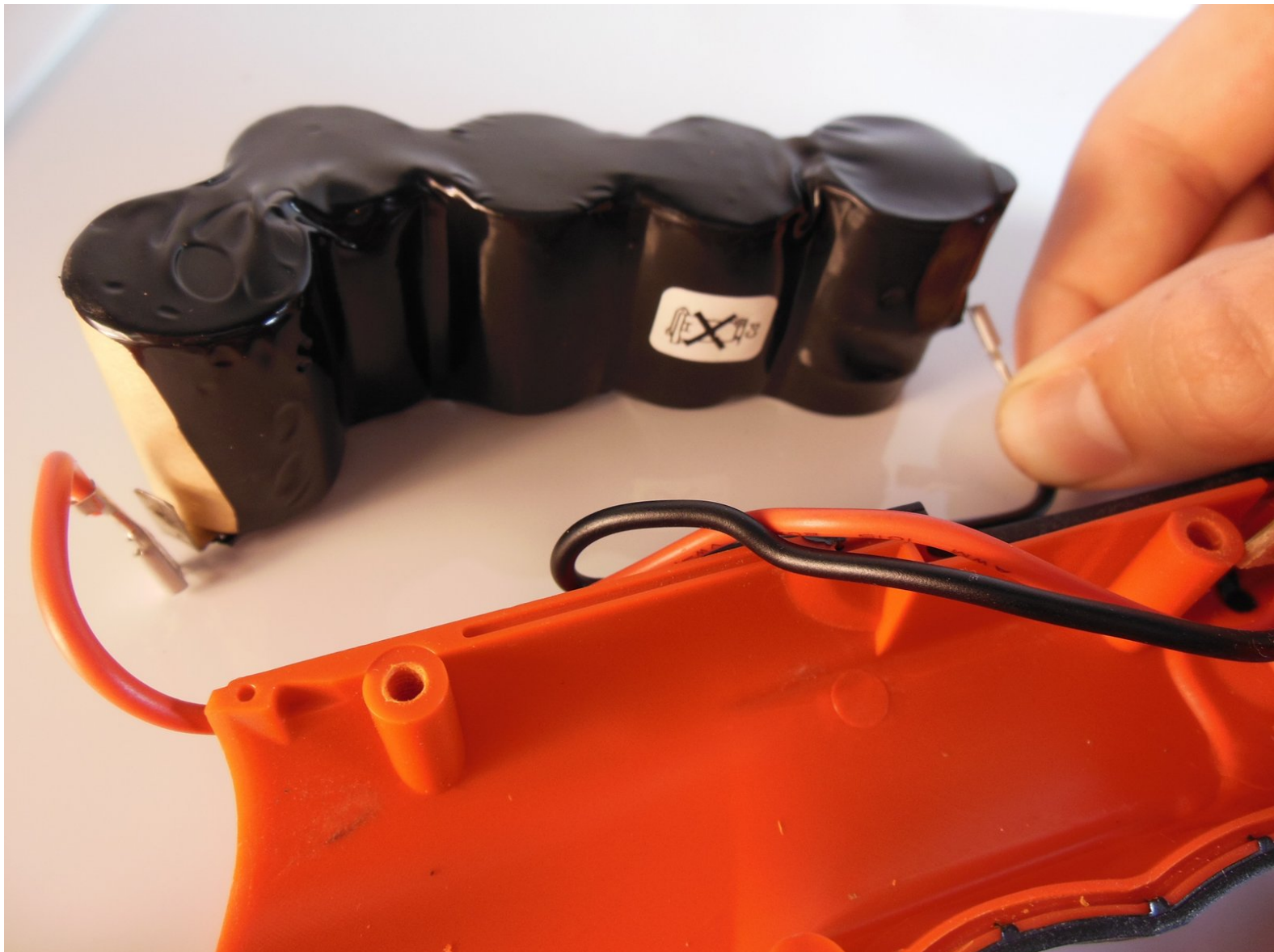




# Black and Decker Pivot Plus PD600 Battery Replacement

This guide details how to take apart the Black and Decker Pivot Plus PD600 to replace the battery.

Written By: Jonathon Centofranchi



---

## INTRODUCTION

If your drill stops working and the battery stops holding a charge chances are you need a new battery. You can find a replacement parts including the battery under the replacement part links in the device page. This guide will show you how to install this new battery.



### TOOLS:

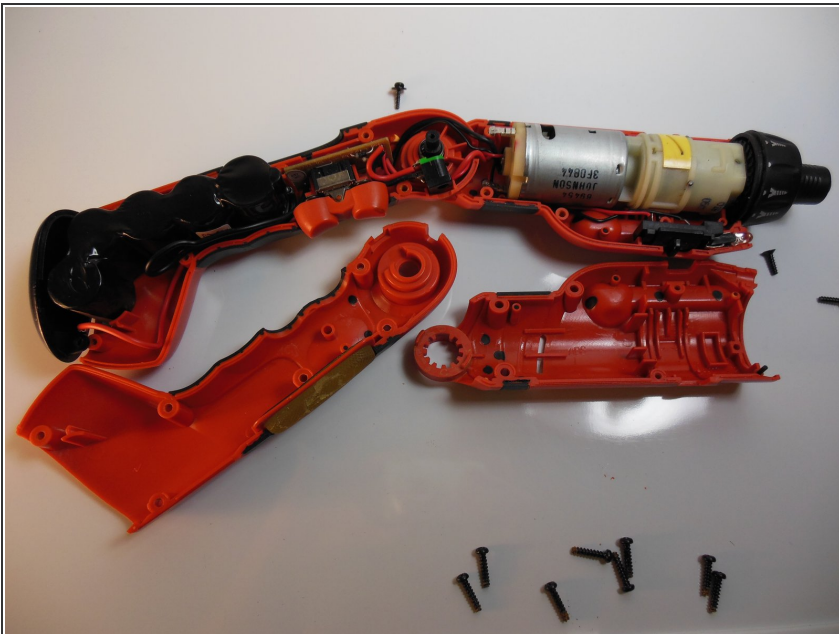
- [Phillips #1 Screwdriver](#) (1)
-

## Step 1 — Drill



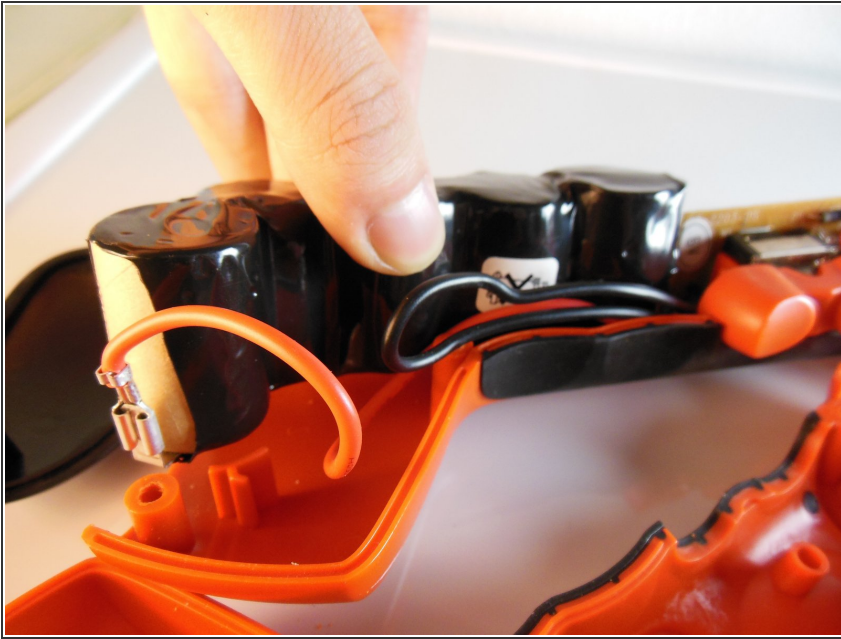
- Remove the nine 15mm Philips #1 screws
- Remove the two 12.5mm Philips #1 screws
- Remove the two 10mm Philips #1 screws

## Step 2



- Lift one side of the drill casing off of the drill. Note that the drill casing consists of two pieces on either side of the drill.

## Step 3 — Battery



- Locate the battery and remove it from its slot at the end of the drill opposite the motor. It should be at the butt of the drill by the handle.

## Step 4



- Unplug the battery by pulling out both the red and black wires. They should come out easily with a little bit of force.
- ⚠ But be careful not to disconnect the wire from the metal it is attached to. In order to avoid this, pull the wire out by holding on to the metal part instead of just the wire.



## Step 5



- Now take the replacement battery and slide the metal parts of the wire into the metal part of the battery.
- ⓘ Make sure that the red wire connects to the curved end of the battery, and that the black wire connects to the straight end of the battery.

To reassemble your device, follow these instructions in reverse order.