



Toshiba Satellite L305-S5946 Hard Drive Replacement

Remove the hard drive from your Toshiba Satellite L305-S5946.

Written By: Alec



INTRODUCTION

Use this guide to replace or upgrade the hard drive in your Toshiba Satellite L305-S5946. If your hard drive is faulty or you want more storage, you should replace the hard drive.



TOOLS:

- [Phillips #1 Screwdriver](#) (1)
 - [iFixit Opening Tool](#) (1)
-

Step 1 — Battery



- Place the laptop upside-down with the display hinges facing away from you.

Step 2



- Slide the latch for the left battery bay to the left.

Step 3



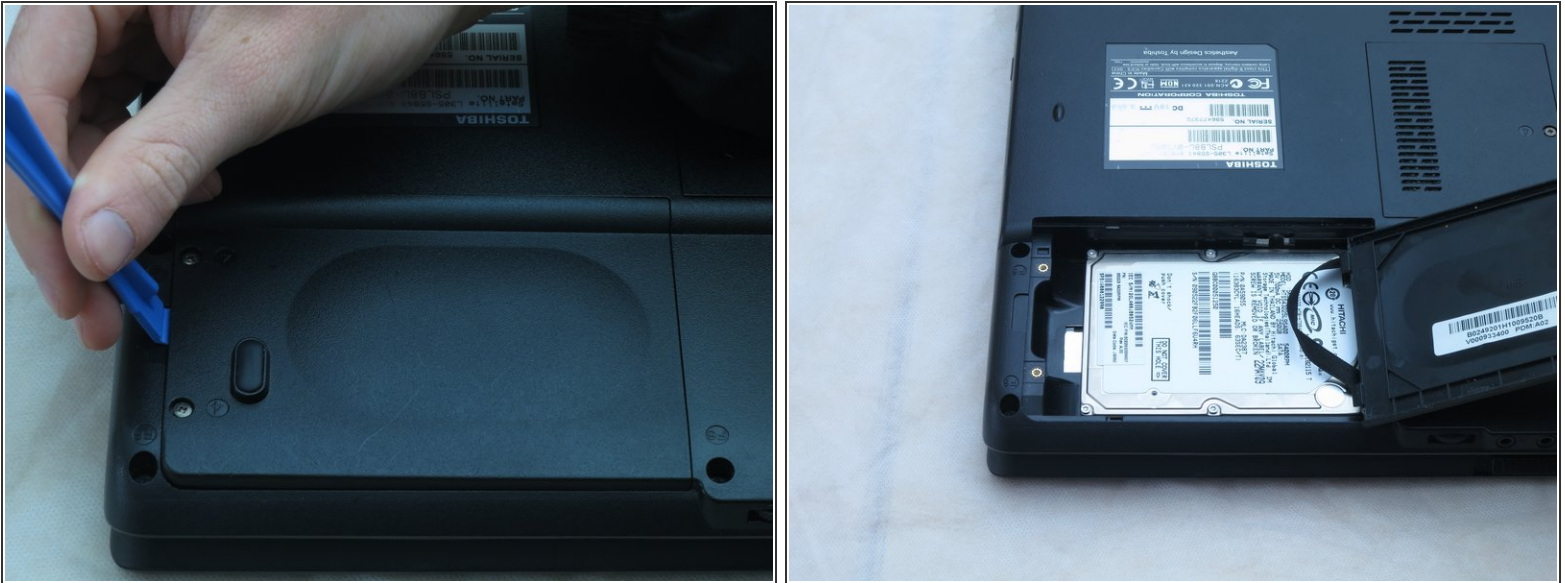
- Slide the latch for the right battery bay to the right and hold.
- Continue to hold the latch while using a plastic opening tool to lift and remove the battery bay cover.
- Remove the battery.

Step 4 — Hard Drive



- Loosen the two captive screws on the bottom left corner of the hard drive using a Phillips #1 screwdriver until you hear a click.

Step 5



- Lift the hard drive cover using a non-marring iFixit opening tool.
- ⓘ This will expose the hard drive.

Step 6



- Slide the hard drive to the left using your fingers.
- Remove the hard drive by inserting an iFixit opening tool under the right side of the hard drive and carefully lifting it out.

To reassemble your device, follow these instructions in reverse order.