



# Toshiba Satellite A105-S4011 RAM Replacement

Install new RAM in your Toshiba A105.

Written By: Lucas Salisbury



## INTRODUCTION

This guide will show you how to remove the current RAM module from this laptop and how to re-install a RAM module. Accessing the RAM in this computer is straightforward and requires minimal minimal dis-assembly.



### TOOLS:

- [iFixit Opening Tools](#) (1)
- [Phillips #1 Screwdriver](#) (1)



### PARTS:

- [PC2-4200 512 MB RAM Chip](#) (1)

## Step 1 — Battery



- Turn the laptop over and locate the lock and battery release switches. Unlock the battery by changing the switch on the right from locked to unlocked by sliding the switch outward.

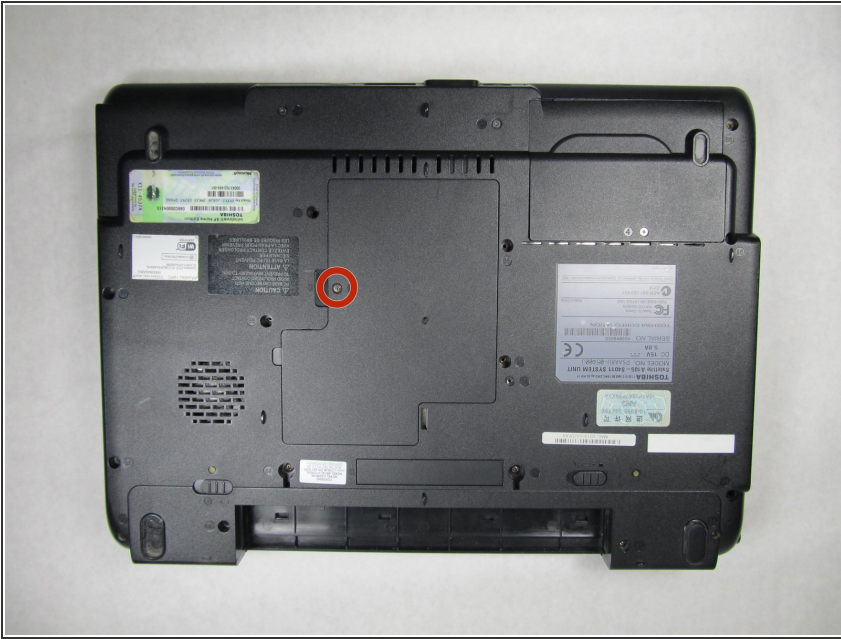
## Step 2



- Hold the release switch and pull out the battery towards you.



## Step 3 — RAM



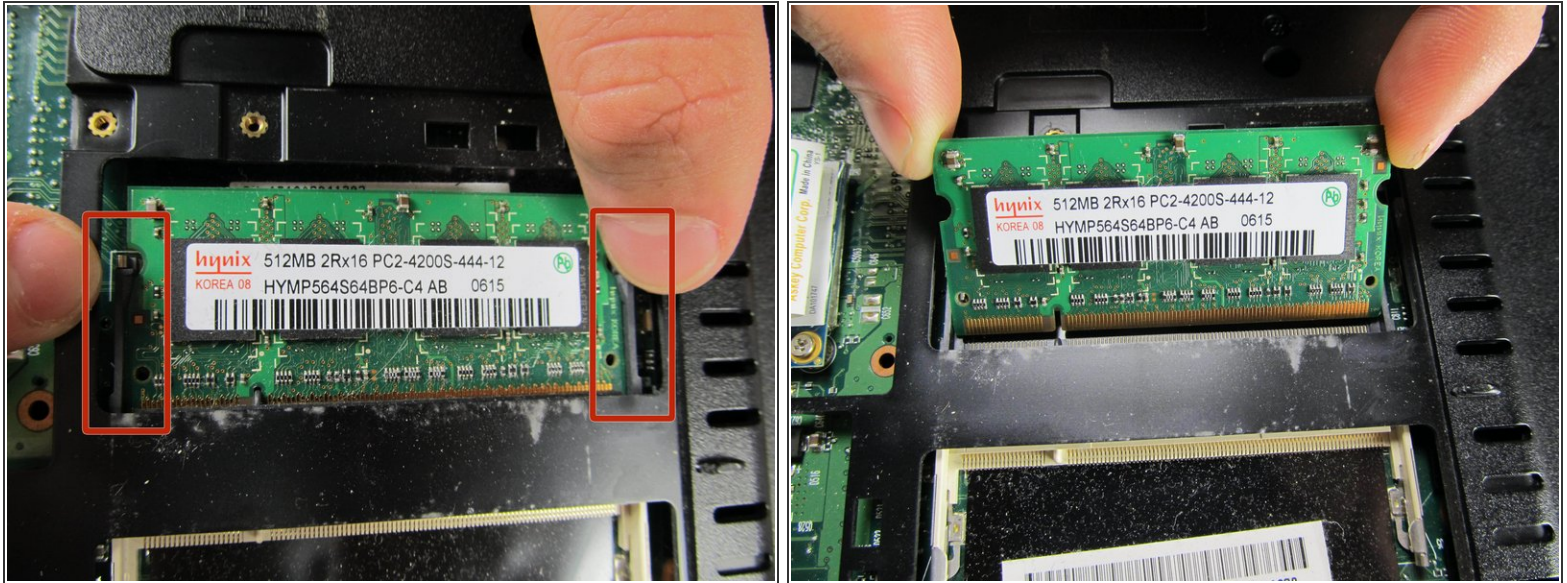
- Locate the screw that is holding the back cover in place and, unscrew it using the #1 Phillips Screwdriver.
- ⓘ This screw cannot be taken out, it is a "captive" screw.

## Step 4



- Using a plastic opening tool, pop off the back cover. Your going to insert the tool into the small slit located on the back cover piece.
- ⚠ Be careful when prying the back cover off because you may damage the cover or crack the plastic.

## Step 5



- Locate the RAM (green module pictured here), and the two prongs on each side of the module. Press the two prongs outwardly, and pull out the RAM module.
- ⓘ Grounding yourself may be a good idea before actually touching the RAM module. This entails touching a conductive metal in order to remove any excess static energy in your body.

To reassemble your device, follow these instructions in reverse order.