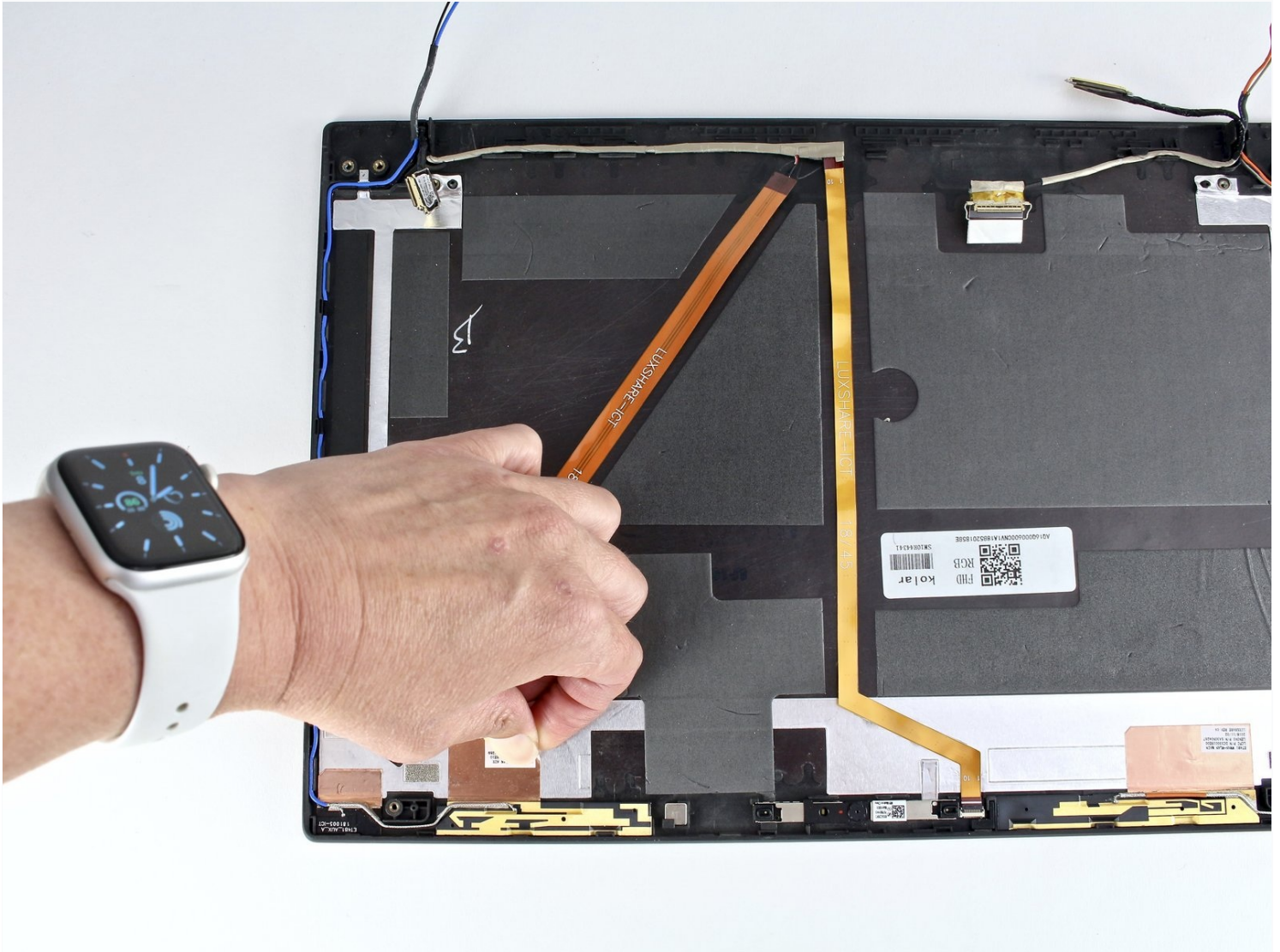




# Lenovo ThinkPad T480s Antenna Kit Replacement

Use this guide to replace the antenna kit in...

Written By: Sarah Westberg



# INTRODUCTION

Use this guide to replace the antenna kit in your Lenovo ThinkPad T480s laptop..

The antenna kit includes the WWAN and WLAN replacement cables and antennas. Some signs of a faulty or failed antenna kit include low performing Wi-Fi signal or no signal at all.

If your antenna kit has started to fail, and you are no longer receiving a strong signal it may be time to replace the antenna kit. Before attempting an antenna kit replacement, you may be able to resolve the issue using [Lenovo's troubleshooting guide](#).

Before attempting to replace the antenna kit, make sure to [disable the internal battery](#), power down your device, and disconnect from any external power sources.



## TOOLS:

Phillips #1 Screwdriver (1)  
iFixit Opening Tool (1)  
Spudger (1)



## PARTS:

01LV663 - Lenovo Laptop Antenna - Genuine (1)  
01LV664 - Lenovo Laptop Antenna Kit - Genuine (1)

## Step 1 — Bottom Cover



 **Disable the battery**, power down the device, and unplug the power adapter from your device before proceeding/beginning the guide.

- Loosen the six captive screws with a Phillips #1 screwdriver.

## Step 2



- Remove the bottom cover with an opening tool.
- Start from the top edge near the hinge and work your way along the edge until all of the clips are unsnapped.

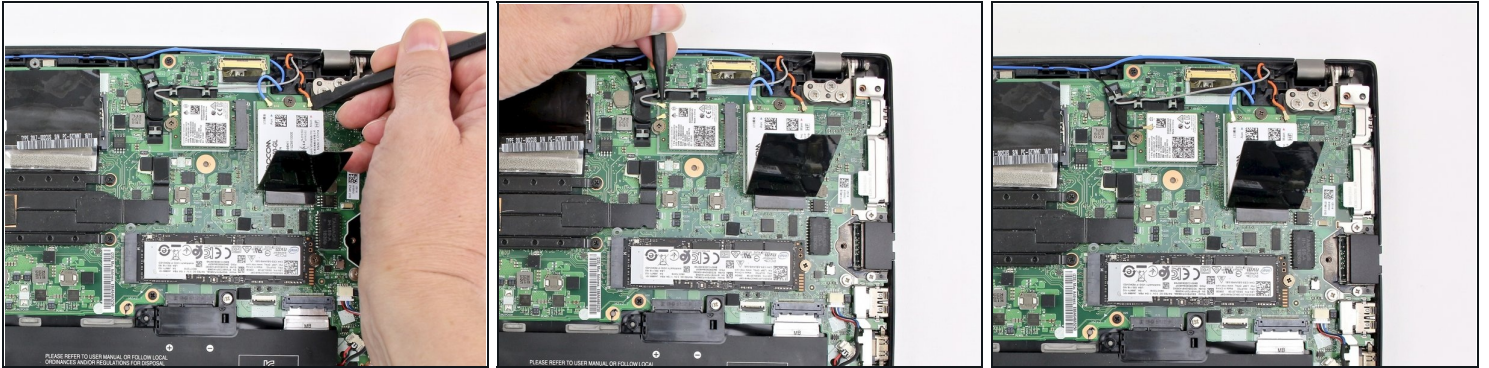
## Step 3



- Lift the bottom cover off.

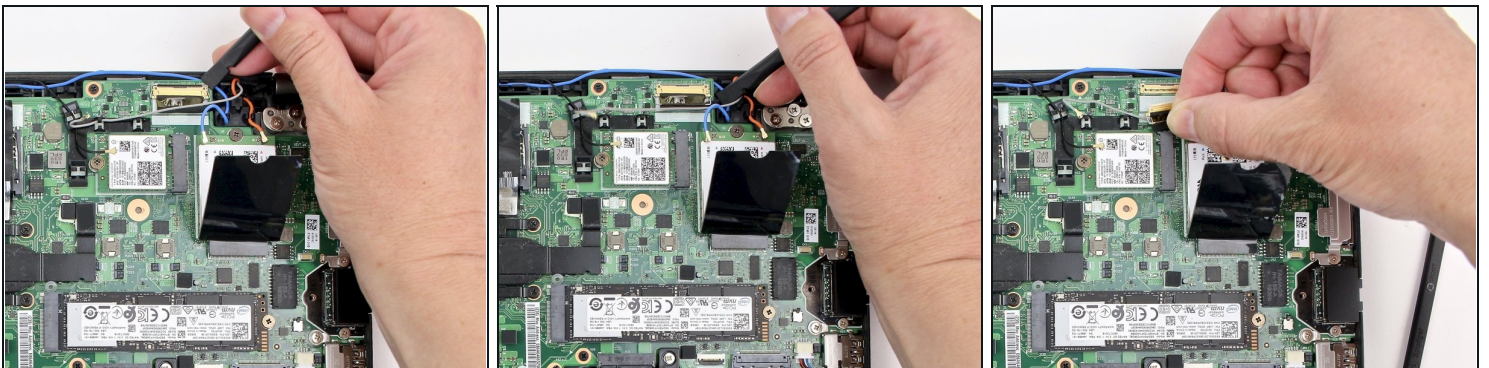


## Step 4 — LCD Assembly



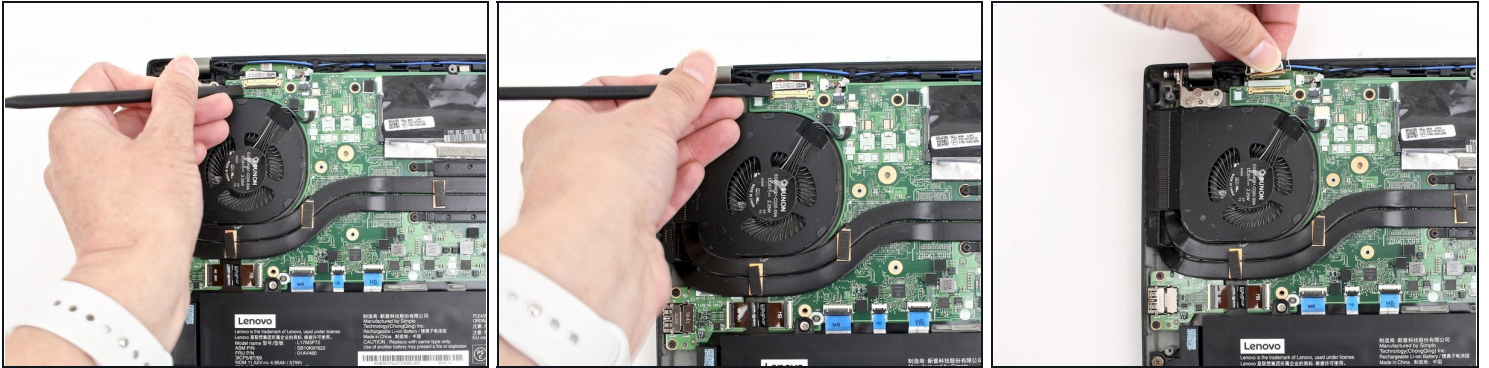
- Use the spudger to disconnect the coaxial cables from the Wi-Fi card and WWAN card.
- ✪ When reassembling the Wi-Fi card, reattach the black wire closest to the screw and the gray wire on the other side of the black wire. With the WWAN card, reattach the blue wire on the left and the orange wire on the right.
- ⓘ There are also small color coded arrows on each card that match the corresponding wires, to make sure you connect to the correct spot.

## Step 5



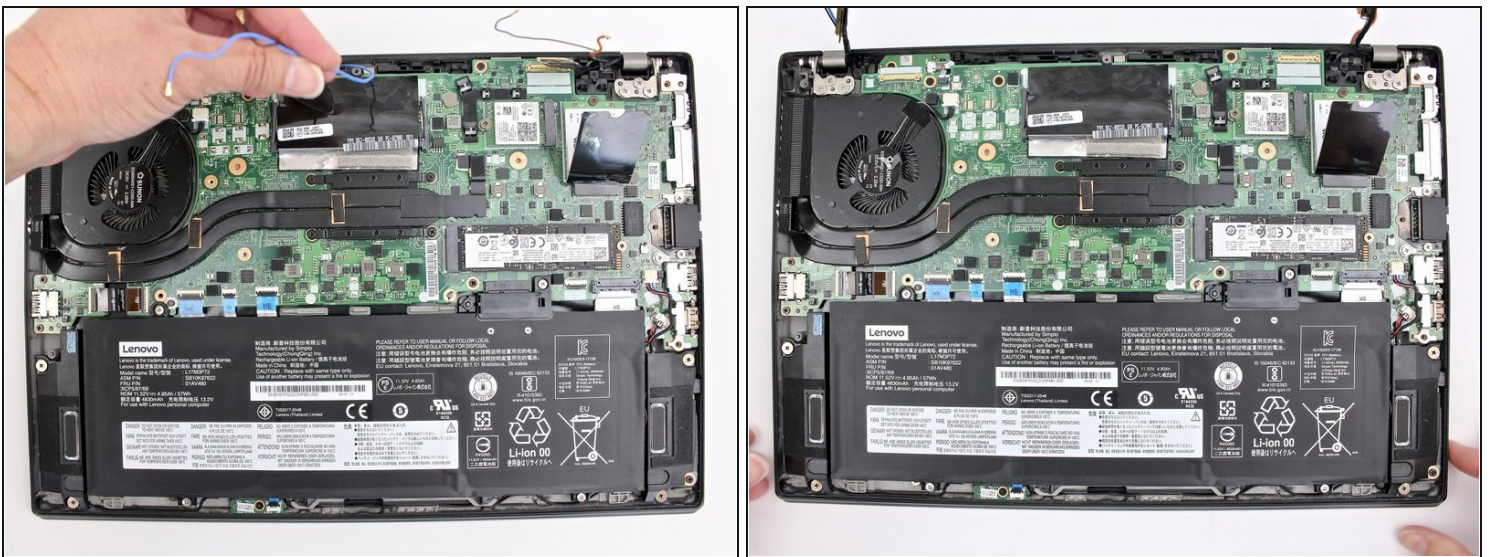
- Use the spudger to disconnect the LCD cable from the motherboard.

## Step 6



- Disconnect the camera cable from the motherboard using a spudger.

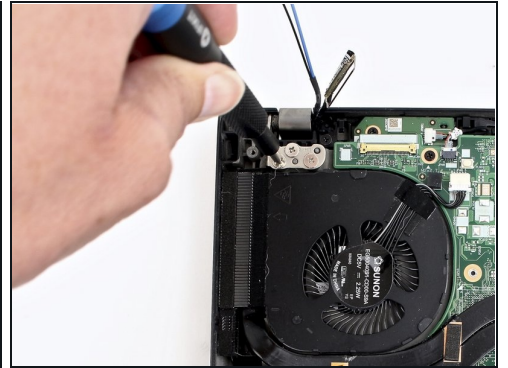
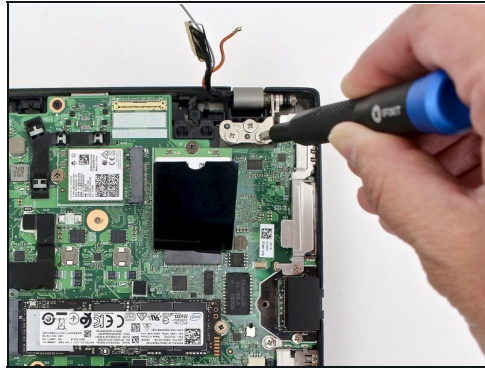
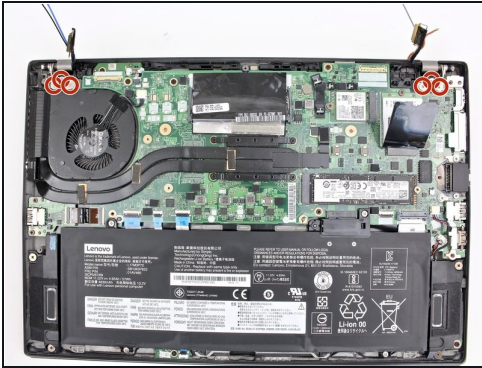
## Step 7



- Remove all antenna cables from their routing.



## Step 8



- Using the Phillips #1 screwdriver, remove three 5 mm screws from the left hinge and three 5 mm screws from the right hinge.

## Step 9



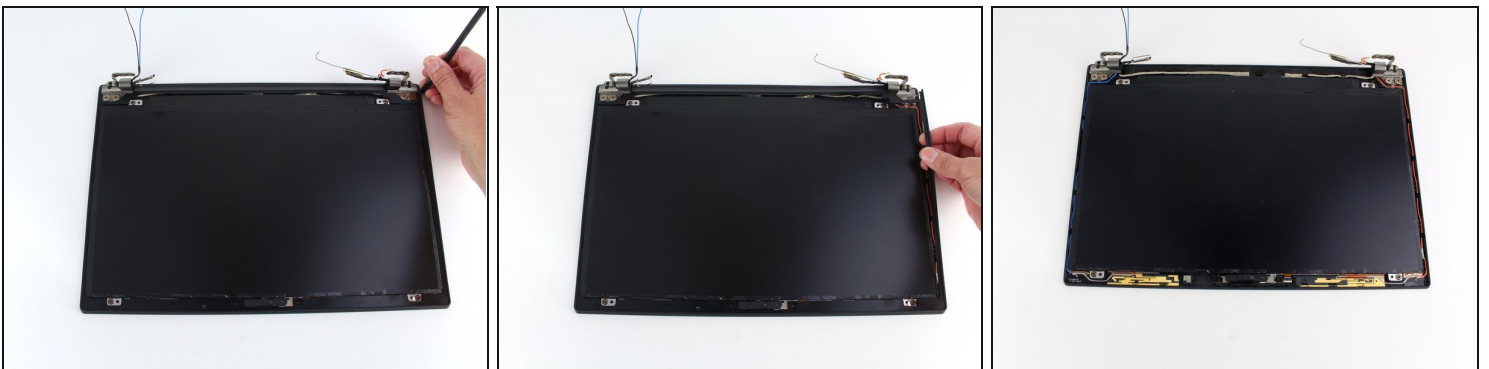
- Carefully rotate the hinges upward and remove the bottom of the machine from the LCD unit.

## Step 10 — LCD Bezel



- Using the spudger, pry the LCD bezel up from the edges starting near the hinges.
- ⓘ It is attached by adhesive so be careful not to break it. You may hear loud snaps when detaching the clips; this is normal.

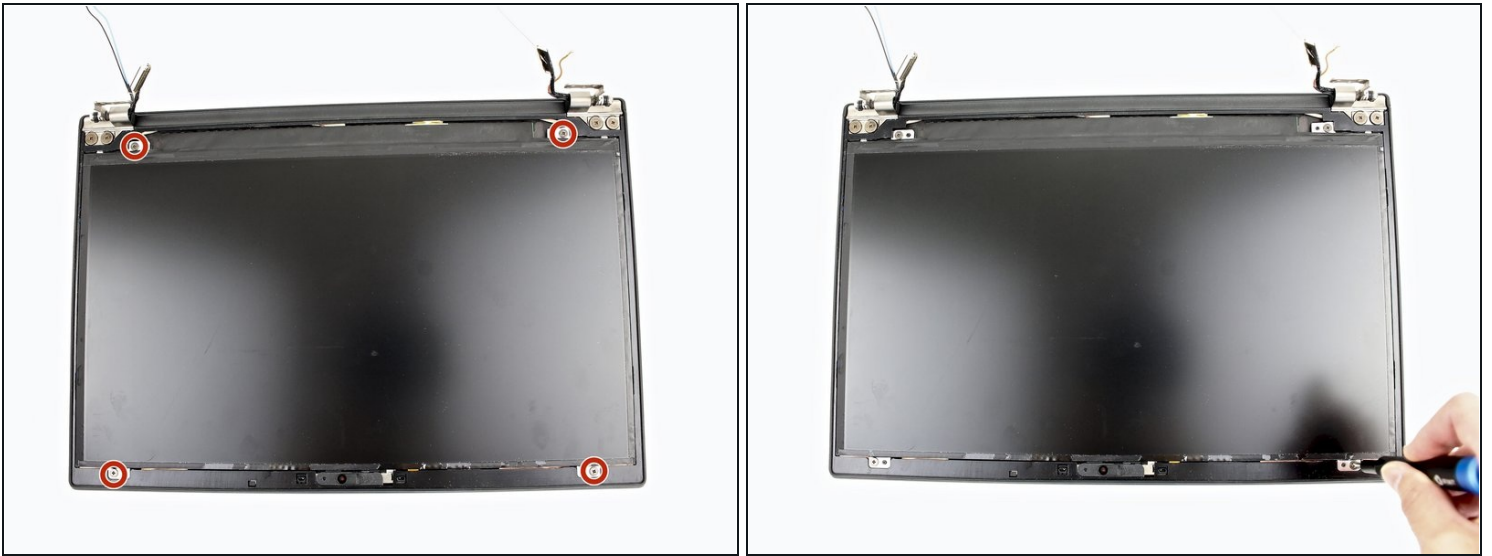
## Step 11



- Use the spudger to remove the internal bezel.
- Start at the corner by the hinge and lift the edge of the internal bezel up with the pointed end of the spudger.
- Hold the internal bezel with your fingers and work your way around the perimeter of the screen carefully pulling the bezel up.

⚠ You will feel resistance and hear snapping as you remove the bezel because it is connected with clips. Be careful that you don't crack the bezel. The plastic is delicate in places.

## Step 12 — LCD Panel



- Remove four 2.9 mm screws from the LCD panel using the Phillips #1 screwdriver.

## Step 13

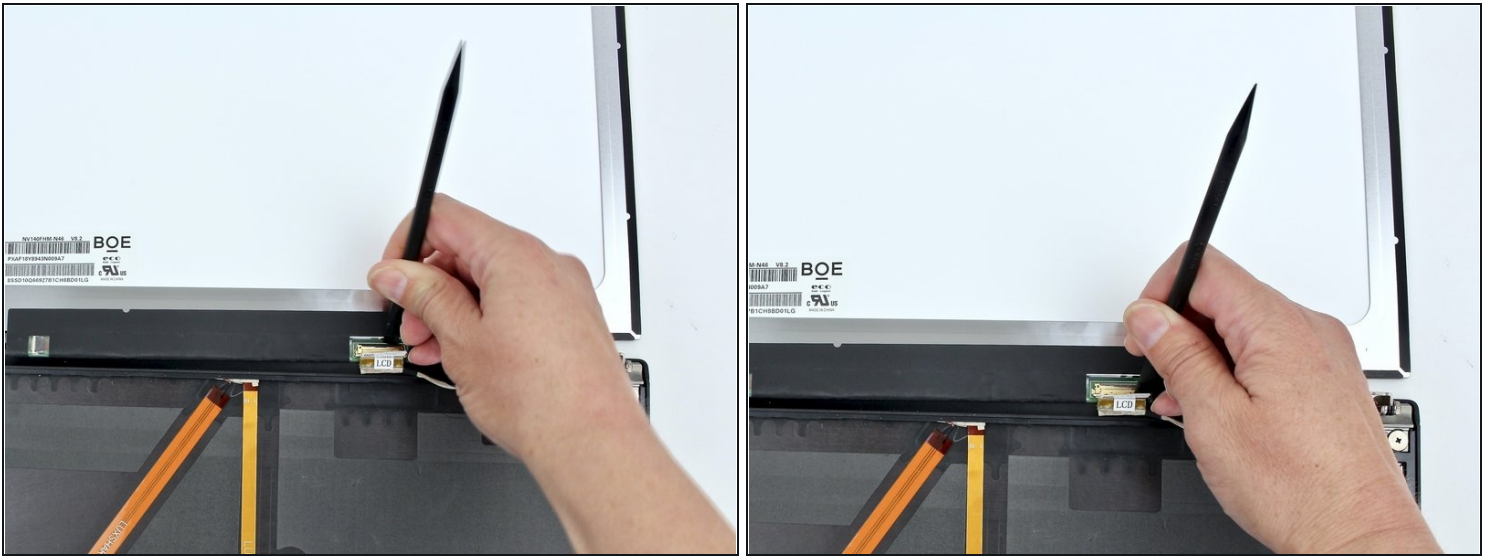


- Gently lift the panel and flip it over.

⚠ The panel is still connected to the unit by the LCD cable so be careful not to rip the connector when flipping it over.

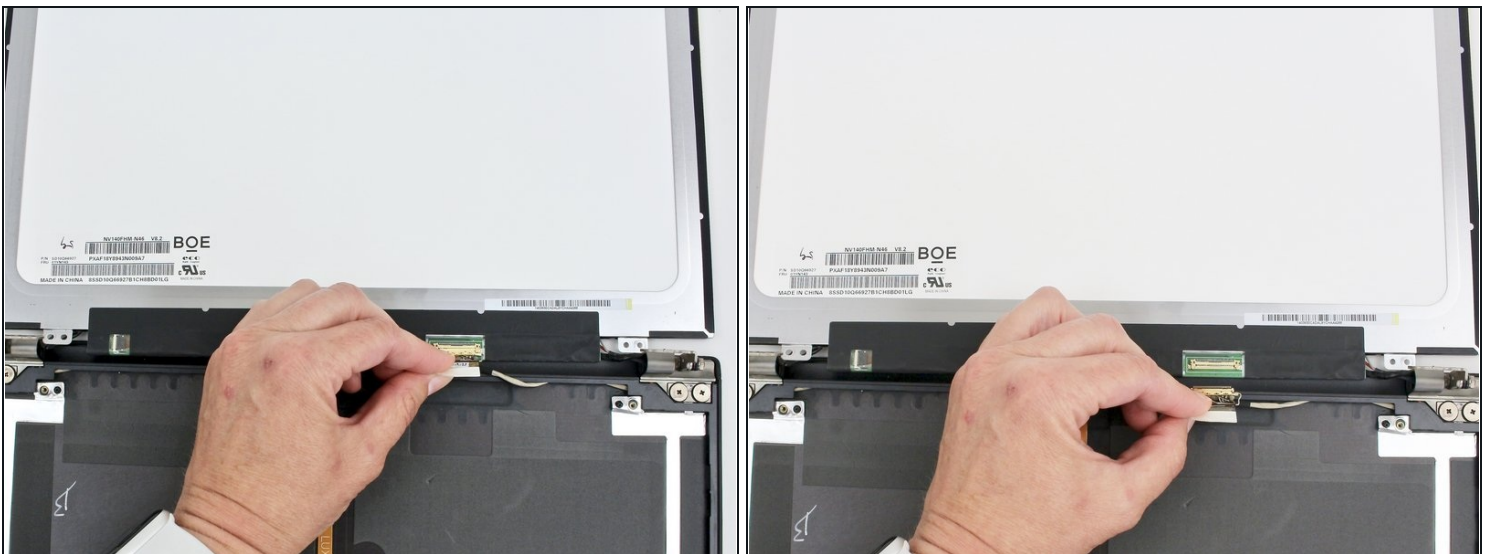


## Step 14



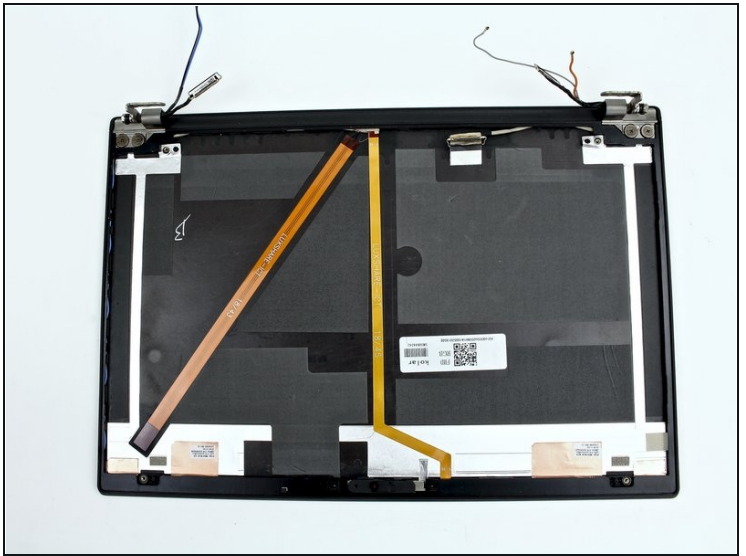
- Peel back the tape covering the LCD cable connector.
- Use the spudger to unlock the LCD cable.

## Step 15



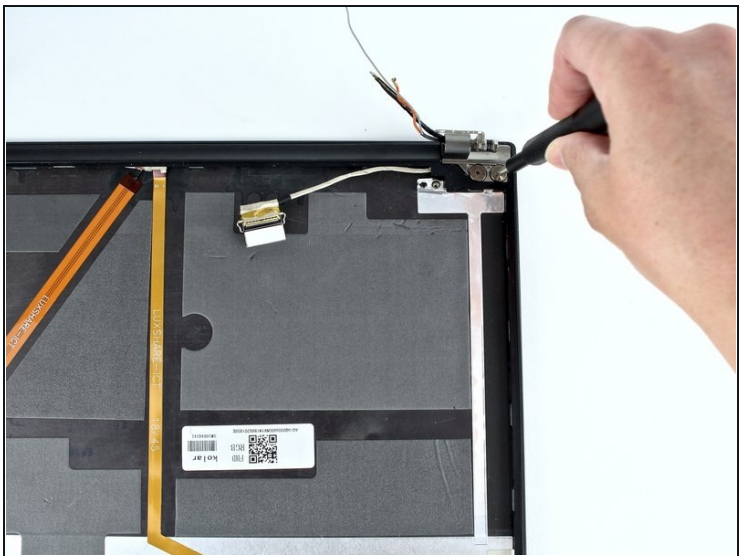
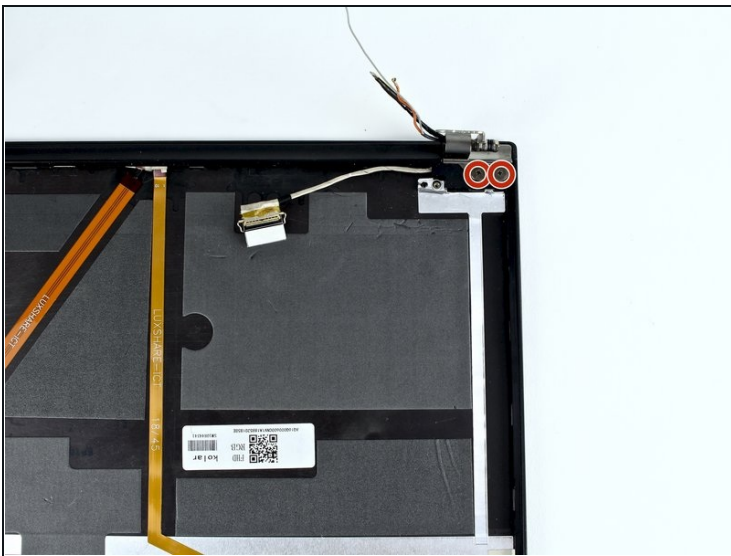
- Remove the LCD cable from the socket.

## Step 16



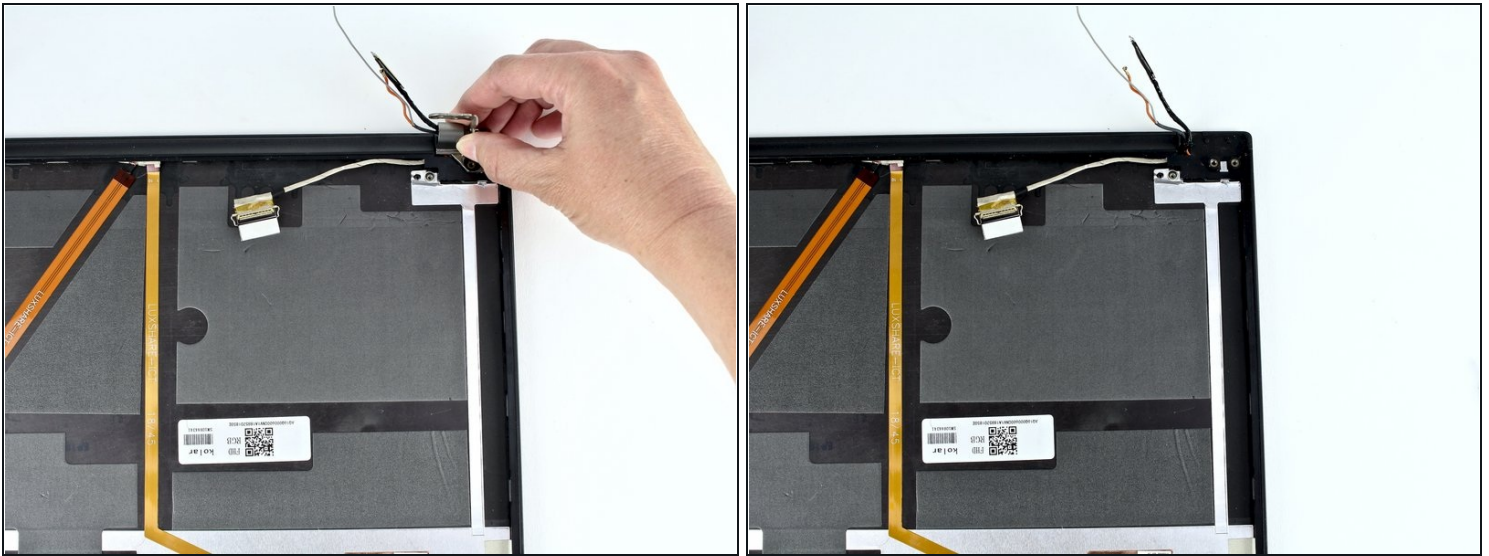
- Remove the LCD panel from the system.

## Step 17 — Hinges



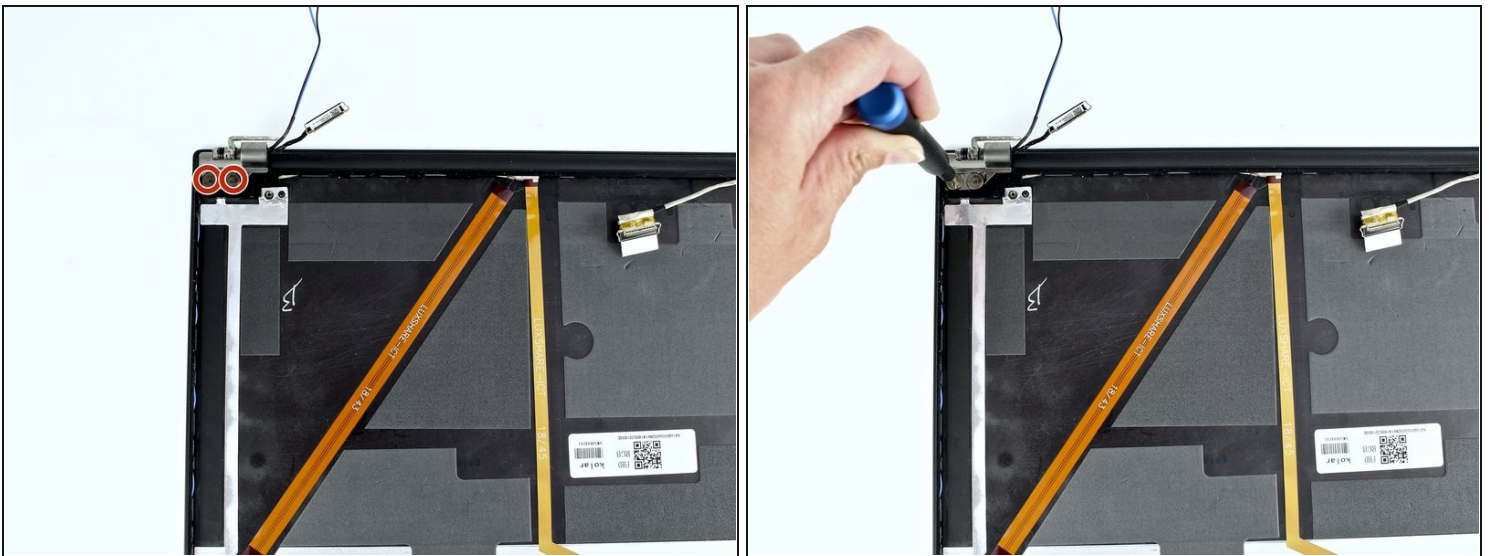
- Use the Phillips #1 screwdriver to remove two 2.8 mm screws from the hinge in the upper right corner.

## Step 18



- Remove the hinge in the upper right corner.

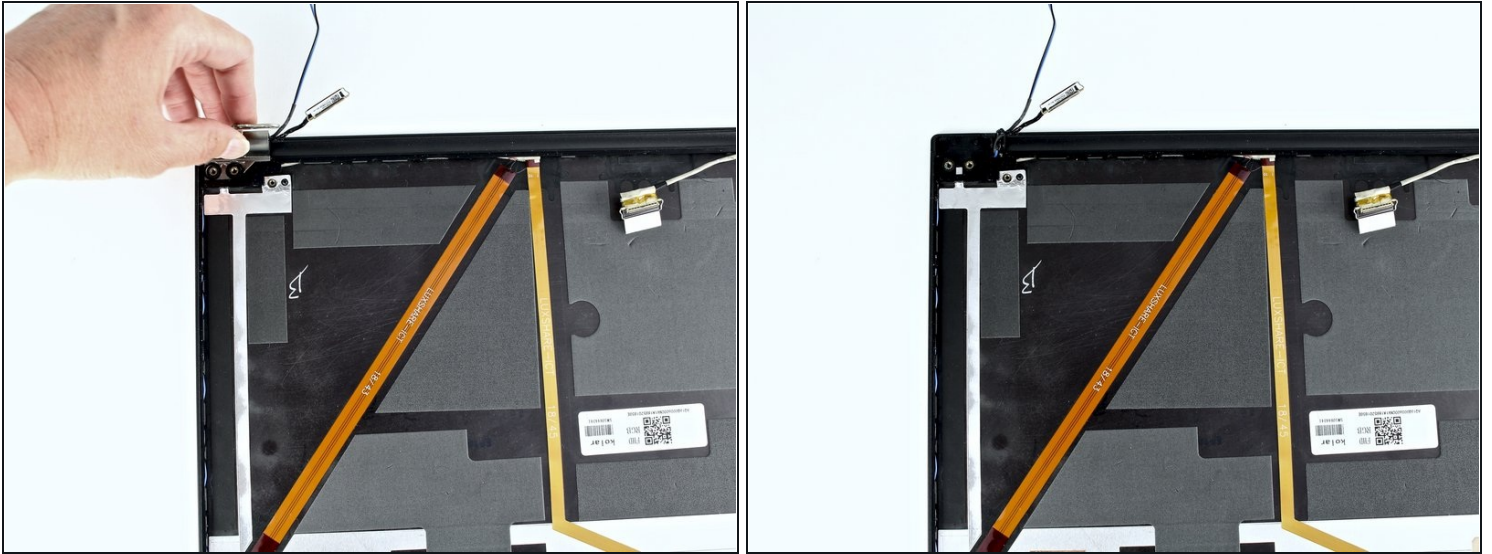
## Step 19



- Use a Phillips #1 screwdriver to remove two 2.8 mm screws from the hinge in the upper left corner.

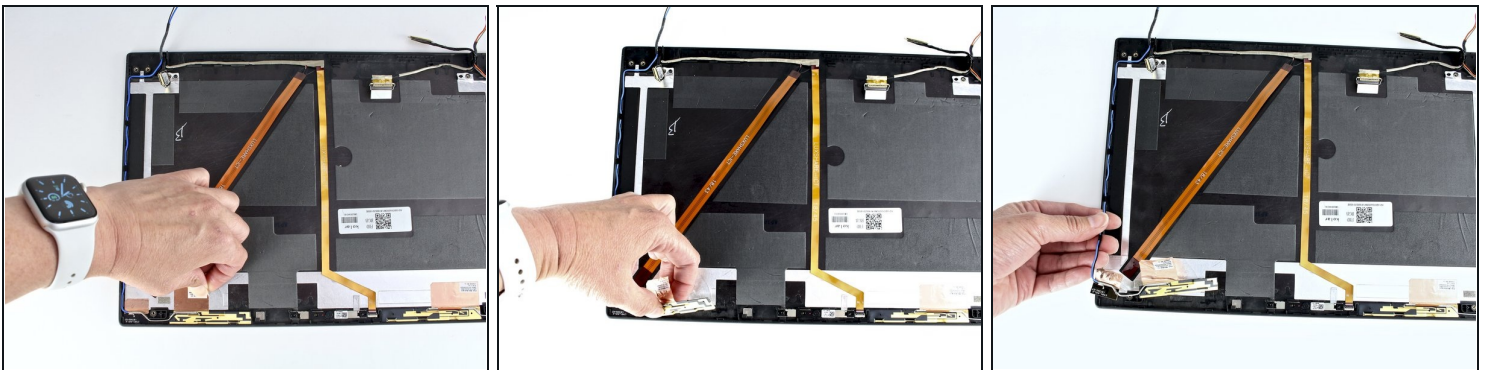


## Step 20



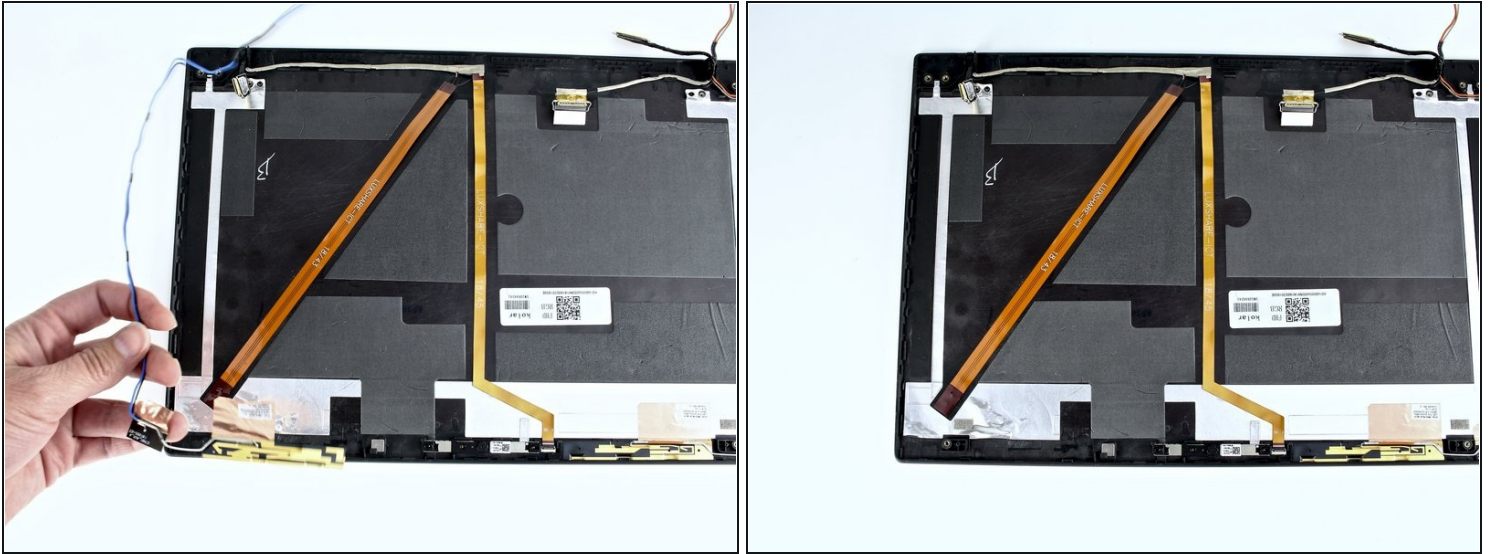
- Remove the hinge in the upper left corner.

## Step 21 — Antenna Kit



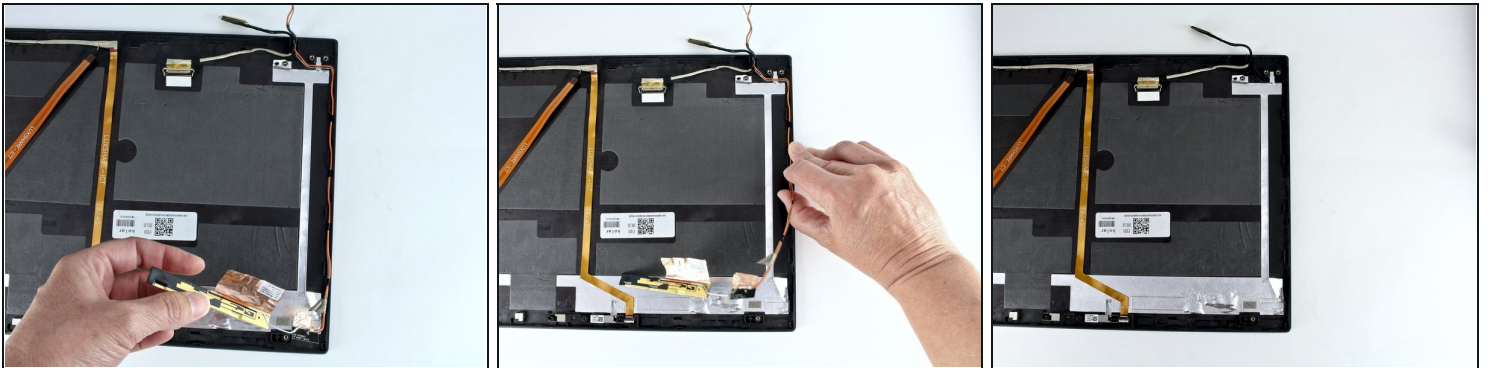
- Pry the metallic tape and the black and blue antenna from the LCD Unit.

## Step 22



- Lift the black and blue cables from the routing.

## Step 23



- Pry the metallic tape and the grey and orange antenna cables from the unit.
- Lift the grey and orange antenna cables from the routing.

To reassemble your device, follow these instructions in reverse order.

Take your e-waste to an [R2 or e-Stewards certified recycler](#).

Repair didn't go as planned? Try some [basic troubleshooting](#), or ask our Answers community for help.