



Disassembling Toshiba T1960CS for HDD Removal

All pictures are annotated

Written By: WayneG



INTRODUCTION

Access to Hard Disk Drive



TOOLS:

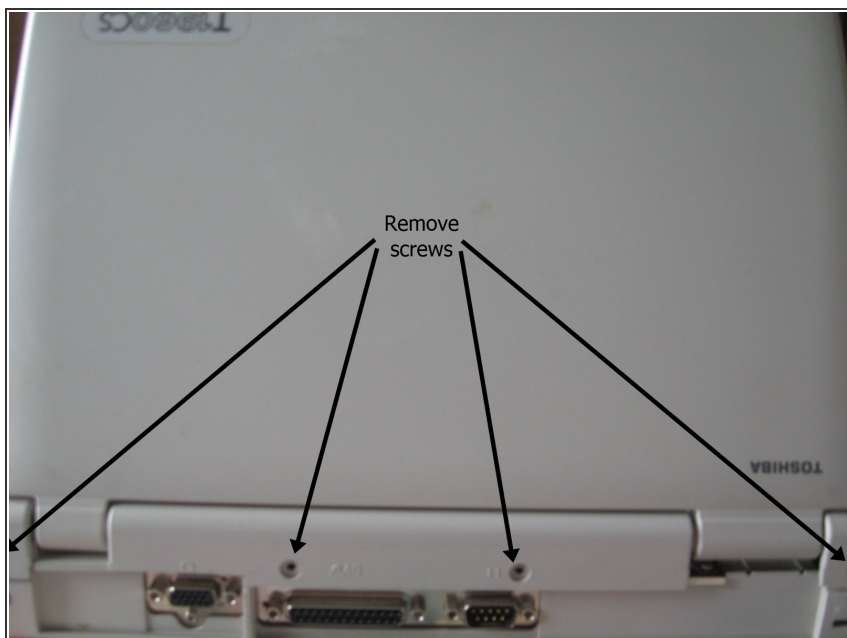
- [Phillips #0 Screwdriver](#) (1)
 - [Flathead 3/32" or 2.5 mm Screwdriver](#) (1)
-

Step 1 — HDD Removal



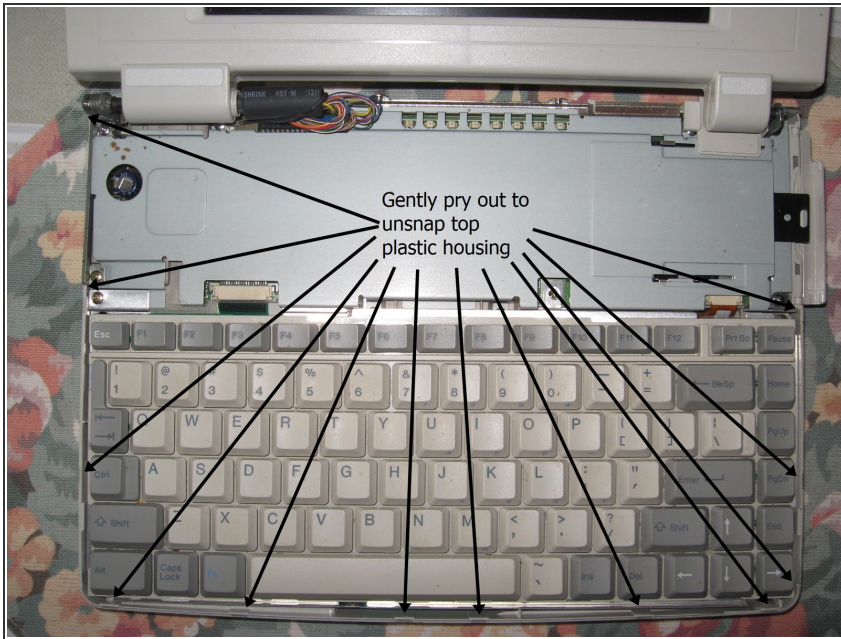
- Pry up cover, remove screw.

Step 2



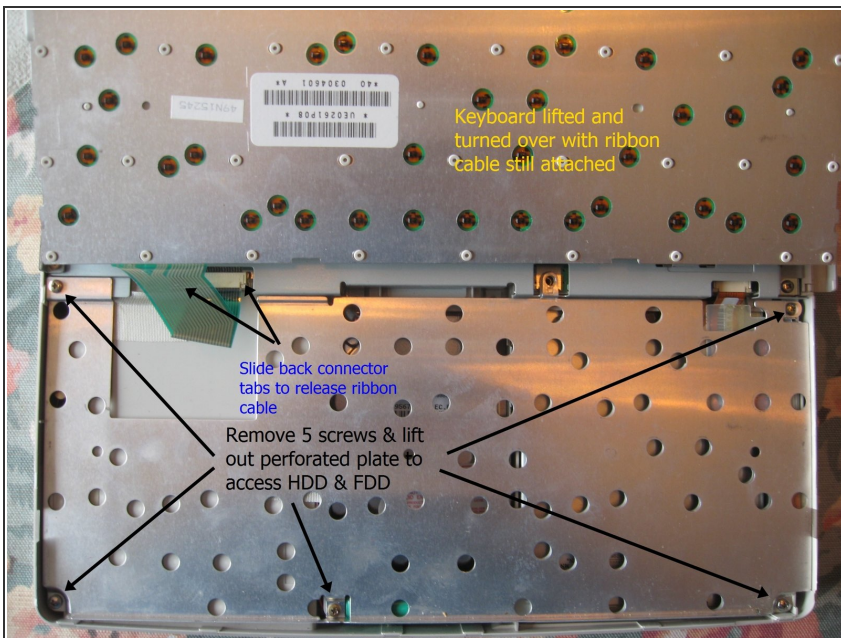
- Remove screws.

Step 3



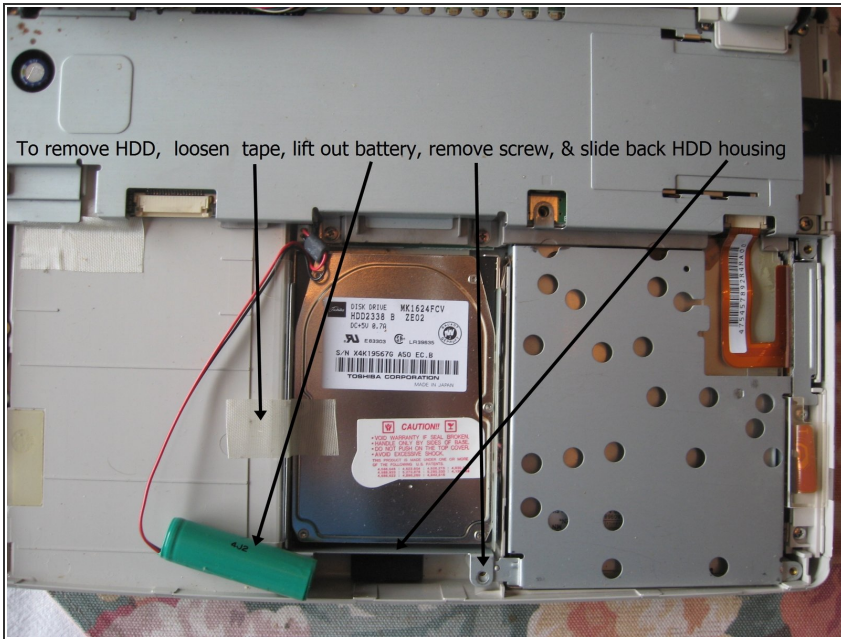
- Gently pry out to unsnap top plastic housing.

Step 4



- ① Lift keyboard and flip over, but do not remove, it is still attached by ribbon cable.
- Slide back connector tabs to release ribbon cable.
- Remove 5 screws and lift out plate to access HDD and FDD.

Step 5



- To remove HDD loosen tape, lift out BIOS battery, remove screws and slide back HDD housing.

To reassemble your device, follow these instructions in reverse order.