



The image displays the complete disassembly of a Motorola ROKR M100. The components are laid out on a white background. Key parts include:
 

- Battery:** A black Motorola BP6X battery with a capacity of 1300mAh.
- Back Cover:** A black plastic cover with a circular camera lens cutout.
- Internal Frame:** A black plastic frame that houses the internal components.
- Internal Components:** A collection of various modules including the camera, display, logic board, and other electronic components.

---

## INTRODUCTION

Dr.Wreck has finally worked up the courage to tear apart his Brand New Motorola Droid! What's inside?! Keep it locked to [PhoneWreck](#) to see the details as they arrive!

This user-contributed teardown is in response to iFixit's [Droid bounty offer](#).



### TOOLS:

- [Gobs of patience](#) (1)
  - [iFixit Opening Picks set of 6](#) (1)
  - [Staple Remover](#) (1)
  - [T6 Torx Screwdriver](#) (1)
  - [Will of Steel](#) (1)
-

## Step 1 — Motorola Droid Teardown



- Thar she blows! Keep it locked on iFixit and [PhoneWreck](#) to see all of the details as they become available!

## Step 2



- The first step is to remove the backcover and Battery
- Here you'll see two screws
  - Use your T6 to remove both the Black and Silver Screws.
- There are more screws but they are non-conveniently hidden. Finding these was the hardest part!



### Step 3



- Non-conveniently, Motorola has made the chassis screws hard to find...
- Two are located underneath the plastic piece at the top of the device.
- Use a pin or very fine stiff wedge to lift this away from the double sided tape to reveal two more T6 screws.

### Step 4



- Finding the rest of the fasteners is a royal pain...
- Did you think to look under the lens cover and google label? Probably not... you should! There's a T5 under there!
- Try not to mind Dr. Wreck's massive toe thumbs...

## Step 5



- You're not done yet! You still need to dig for fasteners at the bottom of the device!
- Luckily there are really \*not\* easy to find. See that gold grill underneath the battery cover? Yeah... peel that away.

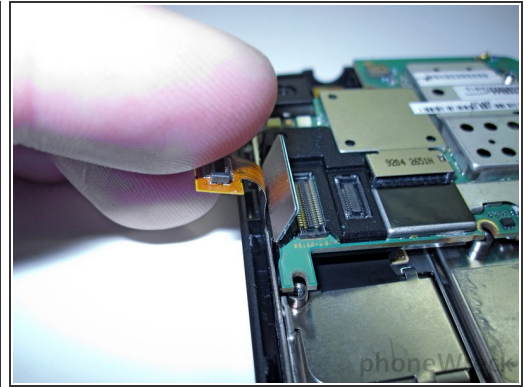
## Step 6



- With these screws removed, you can pry away the back part of the chassis.
- Use a wedge and work it carefully around the outside of the frame.



## Step 7



- There it is!
- Use the T5 to remove the last silver PCB screw.
- Pull off the flex cables that fast the top of the logic board to the screen portion.

## Step 8



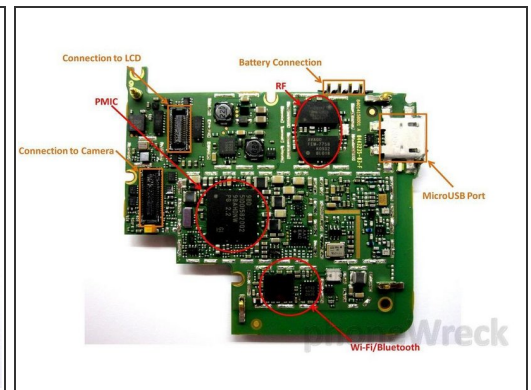
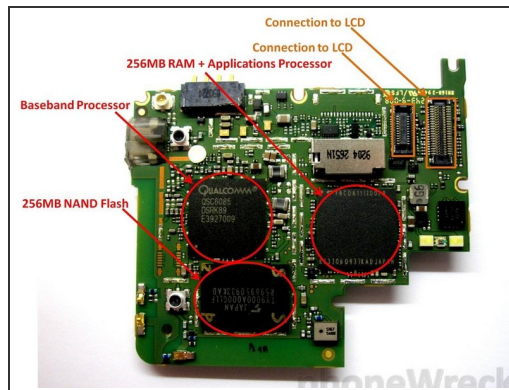
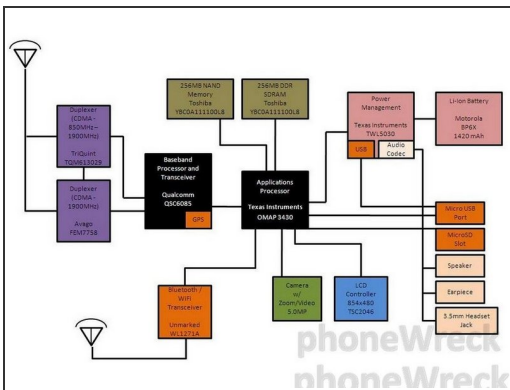
- Now you can flip out the PCB.
- Remove the flex off of the bottom of the PCB to free it.

## Step 9



- Lastly, pry away the black frame that surrounds the keyboard of the device. This will unveil the sliding mechanism.

## Step 10



- We removed the Cans (not a recommended step!!!) to see what IC's were on the board.
- Check out the Block Diagram for full details!

## Step 11



- THAT'S IT! WHAT HAVE WE DONE!?
- Checkout <http://www.phonewreck.com/2009/11/11/mot...>
- Stay tuned to <http://www.phonewreck.com> for a full teardown analysis!

To reassemble your device, follow these instructions in reverse order.