



Logitech Webcam Pro 9000 Front and Back Cover Replacement

Learn how to get to the interior of a Logitech...

Written By: Timothy Forrest



INTRODUCTION

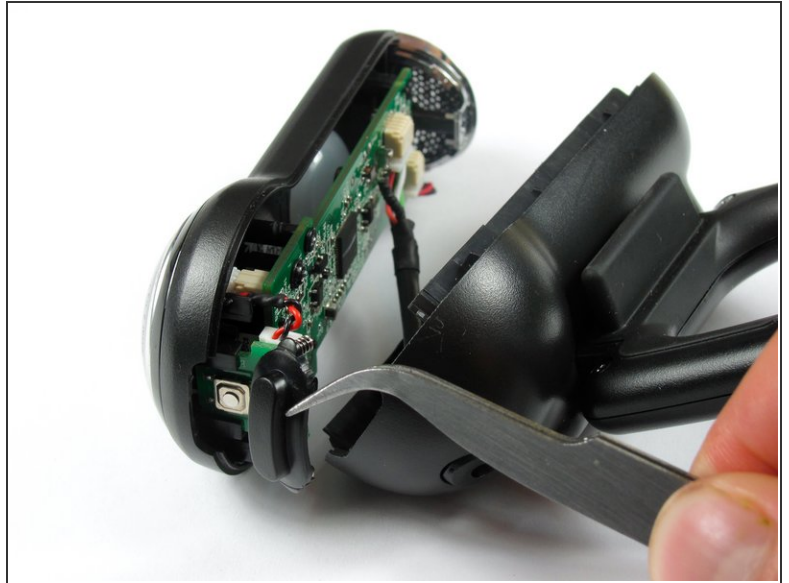
Learn how to get to the interior of a Logitech Webcam Pro 9000. There are a few extra wires, so be careful not to pull the covers apart too quickly.



TOOLS:

- [Phillips #0 Screwdriver](#) (1)
-

Step 1 — Front and Back Cover

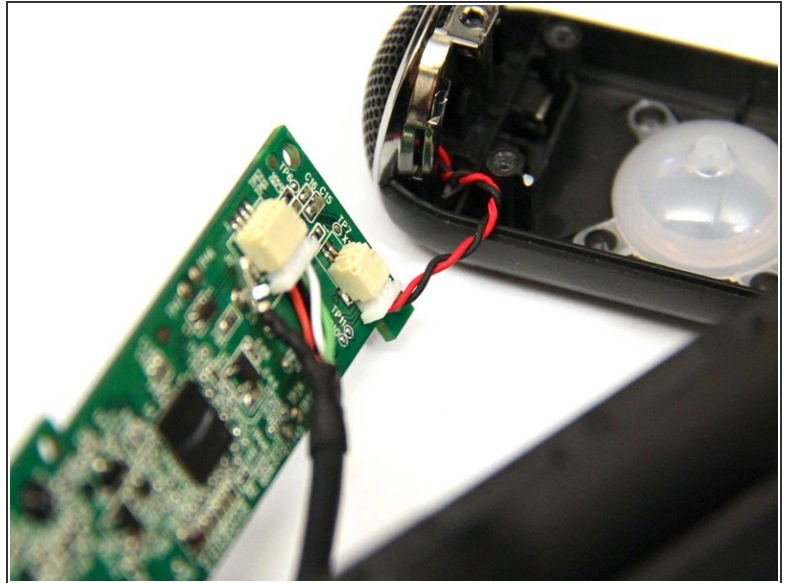
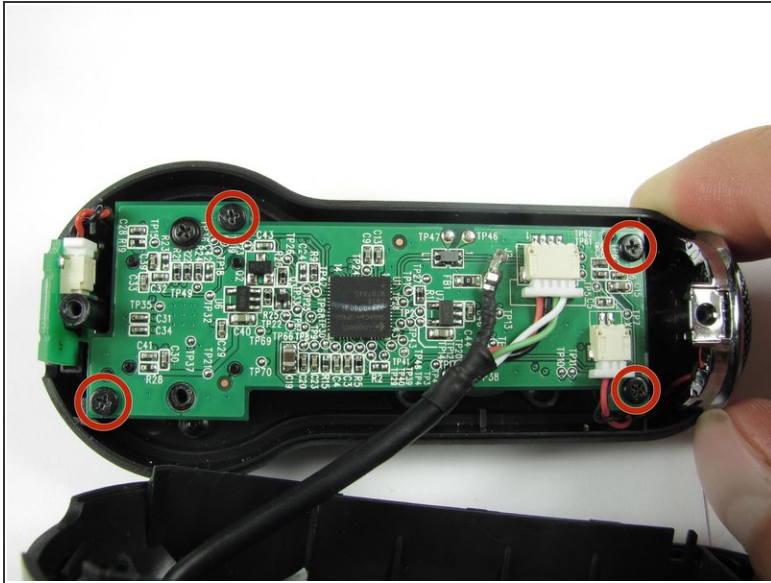


- Remove the two 8 mm Phillips #0 screws on the back cover.

⚠ The motherboard connects the two covers together. DO NOT separate the two yet.

ⓘ There is a button that loosens as the Phillips screws are removed. Don't be alarmed if it falls out.

Step 2



- Remove the four 6mm Phillips #0 screws connecting the motherboard and front cover.

⚠ DO NOT detach the wire connecting the motherboard to the front cover.

To reassemble your device, follow these instructions in reverse order.