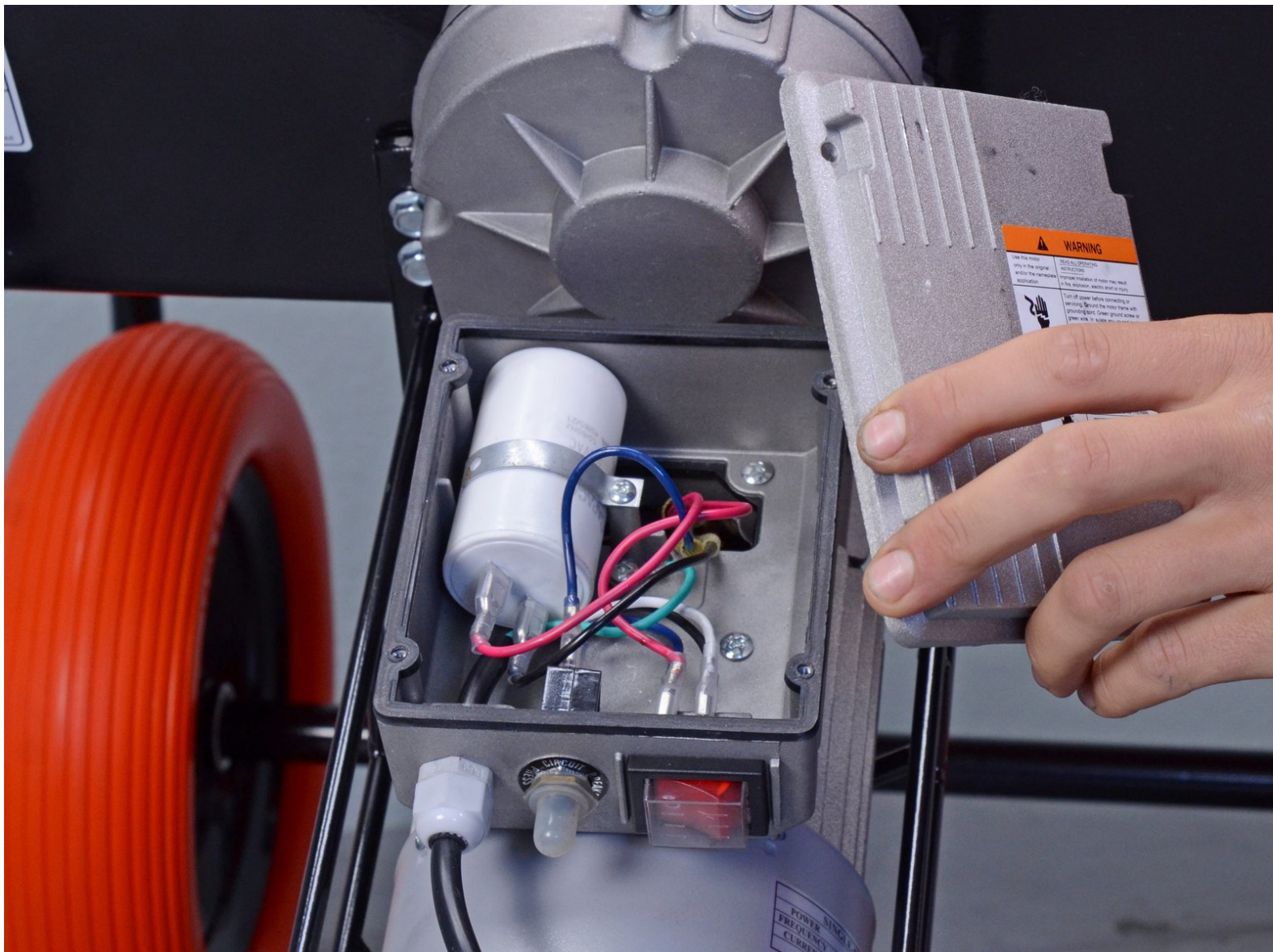




Kushlan Cement Mixer 600DDS 2014 Power Components Replacement

How to replace the power components on a 2014 Kushlan cement mixer model 600DDS.

Written By: Sam Omiotek



INTRODUCTION

Follow this guide to replace the power components on a 2014 Kushlan cement mixer model 600DDS.

This guide is for replacing the capacitor, on/off switch, and power cord simultaneously. If only one of these components needs to be replaced, follow the respective individual guide.

To prevent electric shock, leave the device unplugged for 20 minutes to allow the capacitor to discharge before you begin.



TOOLS:

- [13mm Socket](#) (1)
- [Socket Wrench](#) (1)
- [Phillips #3 Screwdriver](#) (1)
- [Adjustable Wrench](#) (1)
- [Flathead Screwdriver](#) (1)
- [Large Needle Nose Pliers](#) (1)



PARTS:

- [Kushlan Mixer Powercord With Plug DDMA-27](#) (1)
- [Kushlan On/Off Switch DDMA-26](#) (1)
- [Kushlan Condenser DDMA-32](#) (1)

Step 1 — Remove the motor cover bolts



⚠ Before you begin, ensure the power cord is unplugged and the power switch is in the **OFF** position.

- Use a 13 mm socket to remove the two bolts securing the motor cover to the frame.

Step 2 — Remove the motor cover



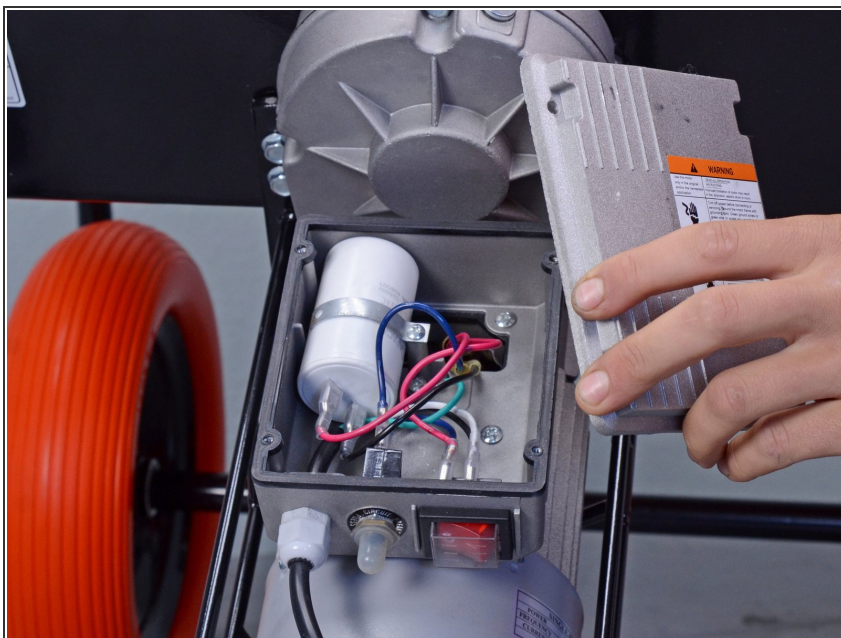
- Remove the motor cover.

Step 3 — Remove the electrical panel



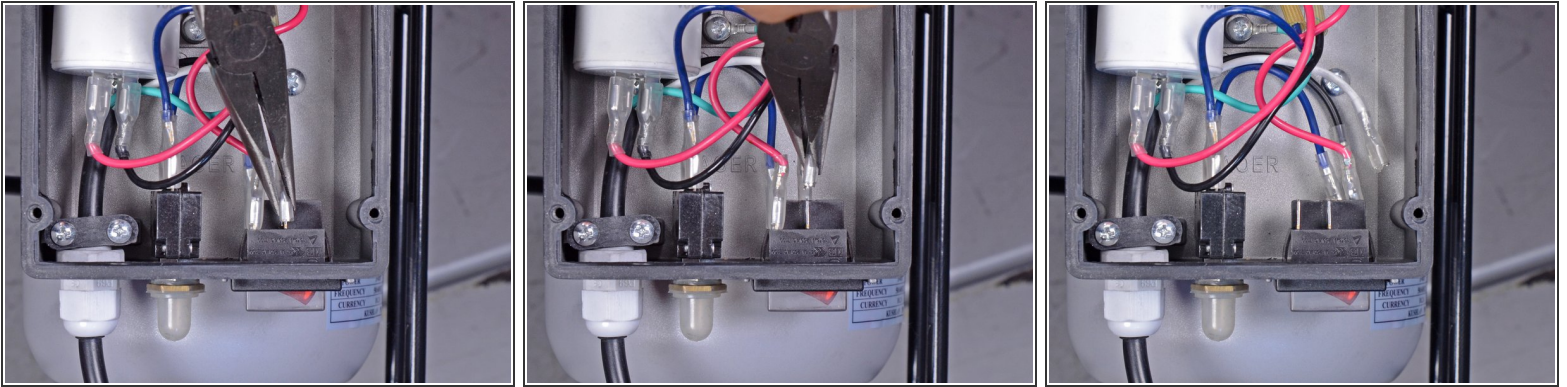
- Use a Phillips screwdriver to remove the four screws securing the electrical panel.

Step 4 — Remove the electrical panel



- Remove the electrical panel.

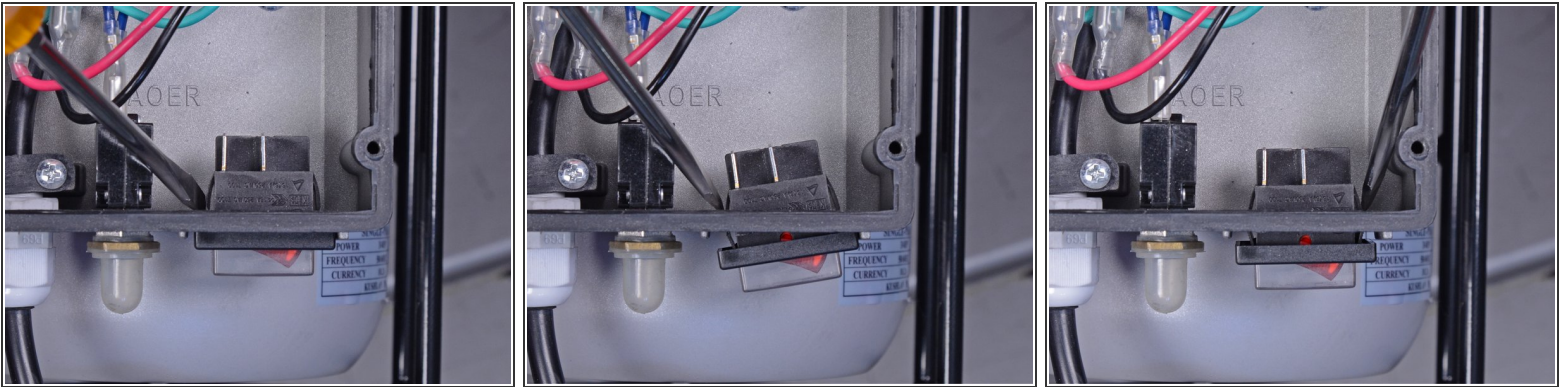
Step 5 — Remove the on/off switch



- Use a pair of needle-nose pliers to disconnect the four wires from the back of the on/off switch.

- ☑ During reassembly, ensure the wires are connected back into their [original locations](#) and the on/off switch is not upside-down.

Step 6



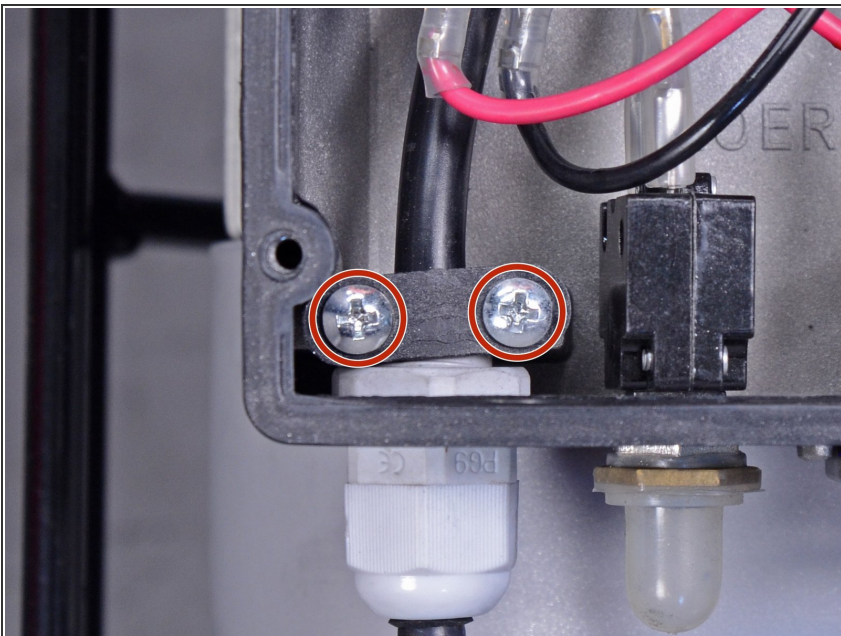
- Use a flathead screwdriver to press the sides of the on/off switch through the opening in the electrical box.

Step 7



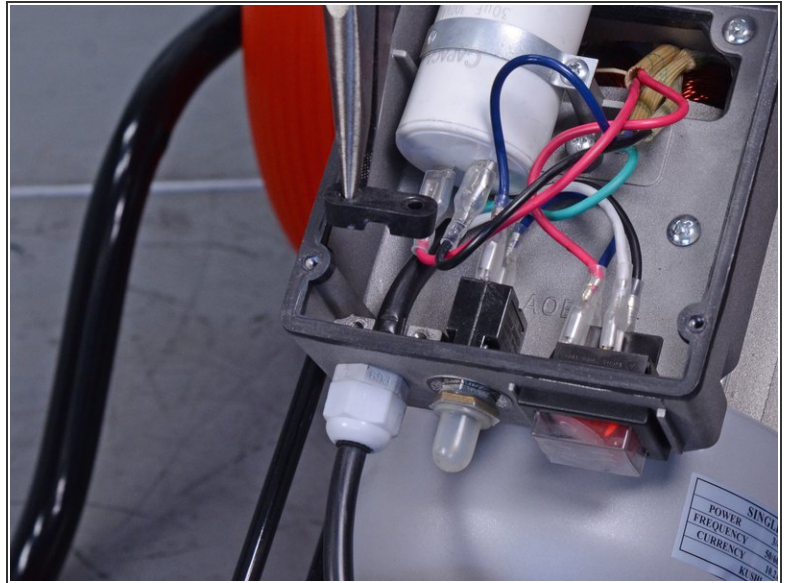
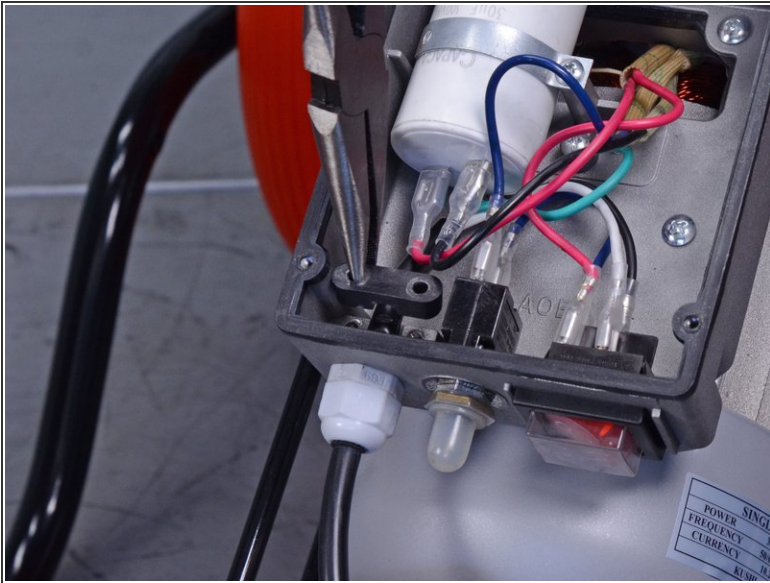
- Remove the on/off switch.

Step 8 — Remove the power cord



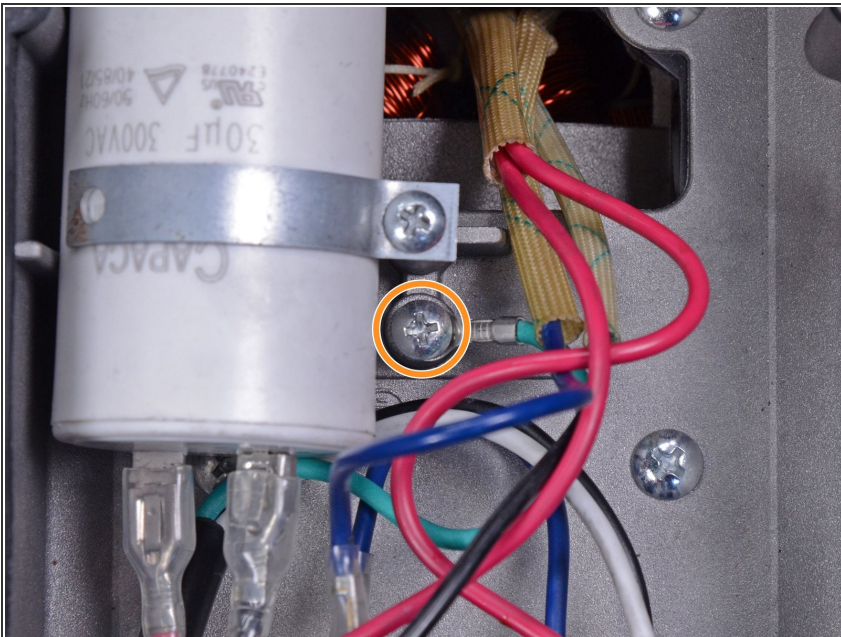
- Use a Phillips screwdriver to remove the two screws securing the fastener behind the strain relief fitting.

Step 9



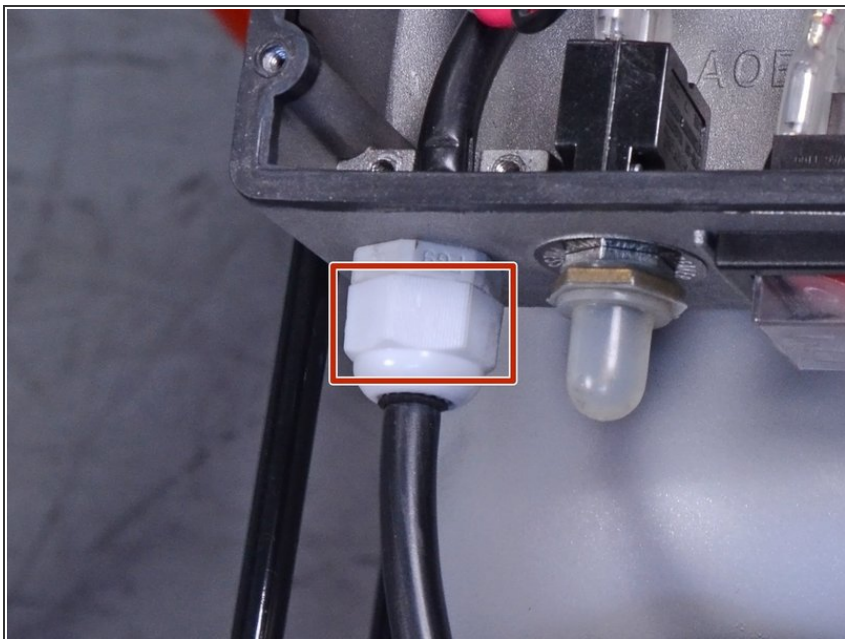
- Remove the fastener.

Step 10



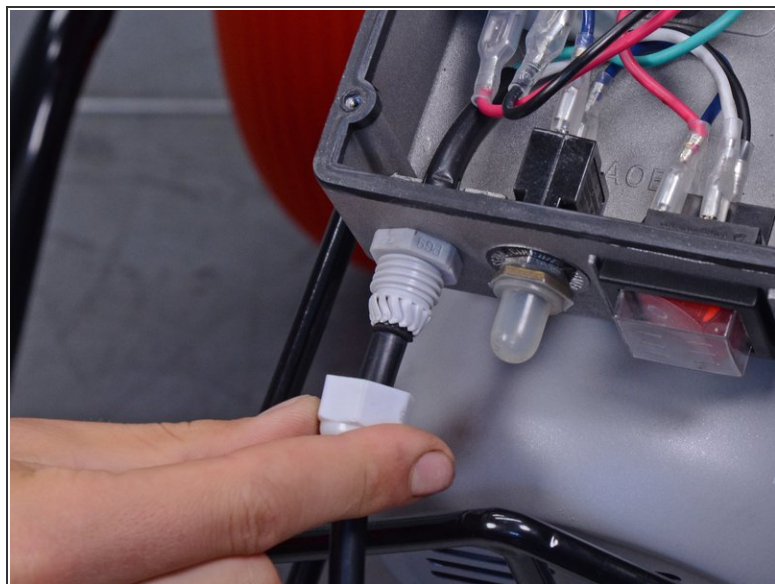
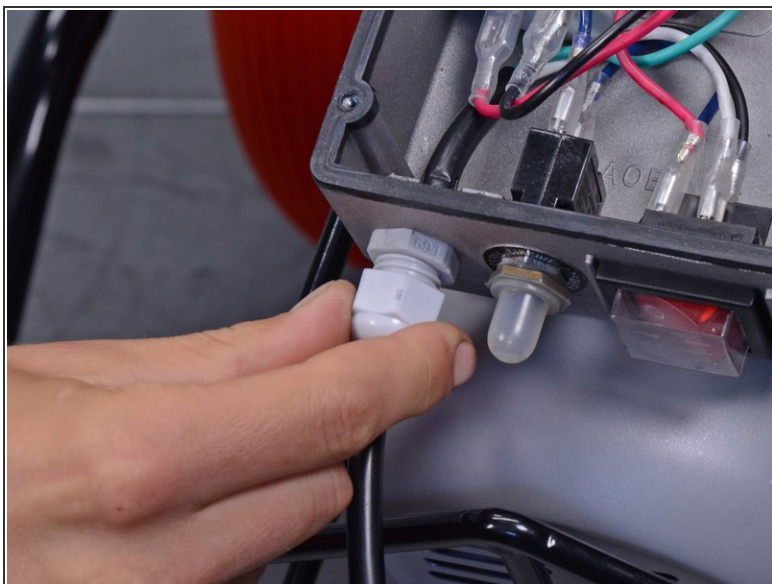
- Use a Phillips screwdriver to remove the screw securing the green ground wire to the bottom of the electrical box.

Step 11



- Use an adjustable wrench to remove the power cord's strain relief fitting cap.

Step 12



- Slide the cap off of the strain relief fitting.

Step 13



- Feed the power cord and its black, white, and green wires out through the strain relief fitting.

- ☑ Transfer the strain relief fitting cap onto the new power cord.

Step 14 — Remove the capacitor



- Use a Phillips screwdriver to remove the screw securing the capacitor support.

Step 15



- Remove the capacitor support.

Step 16



- Use a pair of needle nose pliers to disconnect the red and black wires from the capacitor.
- Remove the capacitor.
- i* Use tape or a zip tie to differentiate this set of red and white wires from the other set of red and white wires running to the on/off switch to ensure proper reinstallation.

To reassemble your device, follow these instructions in reverse order.