



Alienware 15 R3 Hard Drive Replacement

Use this guide to solve the Blue Screen of...

Written By: Yutong Yin



Your PC ran into a problem and needs to restart. We're just collecting some error info, and then we'll restart for you.

20% complete



For more information about this issue and possible fixes, visit <https://www.windows.com/stopcode>

If you call a support person, give them this info:

Stop code: CRITICAL_PROCESS_DIED

INTRODUCTION

Use this guide to solve the Blue Screen of Death of Alienware 15 R3 which usually occurs when booting.

Alienware 15 R3 failed to properly read the SSD containing system files when booting resulting the Blue Screen of Death. Changing the booting option in BIOS will not help to solve the problem. Therefore, replacing the hard drive from Alienware 15 R3 is the most effective solution.

I recommend [backup](#) important files in your hard drive before repairing.



TOOLS:

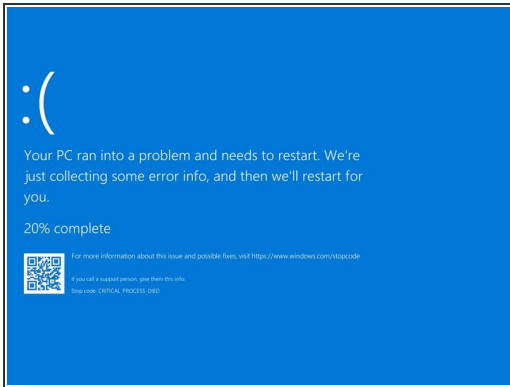
- [Mako Driver Kit - 64 Precision Bits](#) (1)
- [Isopropyl Alcohol](#) (1)
- [Paper Towels](#) (1)



PARTS:

- [1 TB SSD](#) (1)
- [250 GB SSD](#) (1)
- [Crucial MX500 500 GB SSD](#) (1)
- [2 TB SSD](#) (1)

Step 1 — Hard Drive



- Find Power in start menu and click Shut Down to turn off your Alienware 15 R3.
- Wait a few seconds until all the lights around are off.
- Unplug the power supply.

Step 2



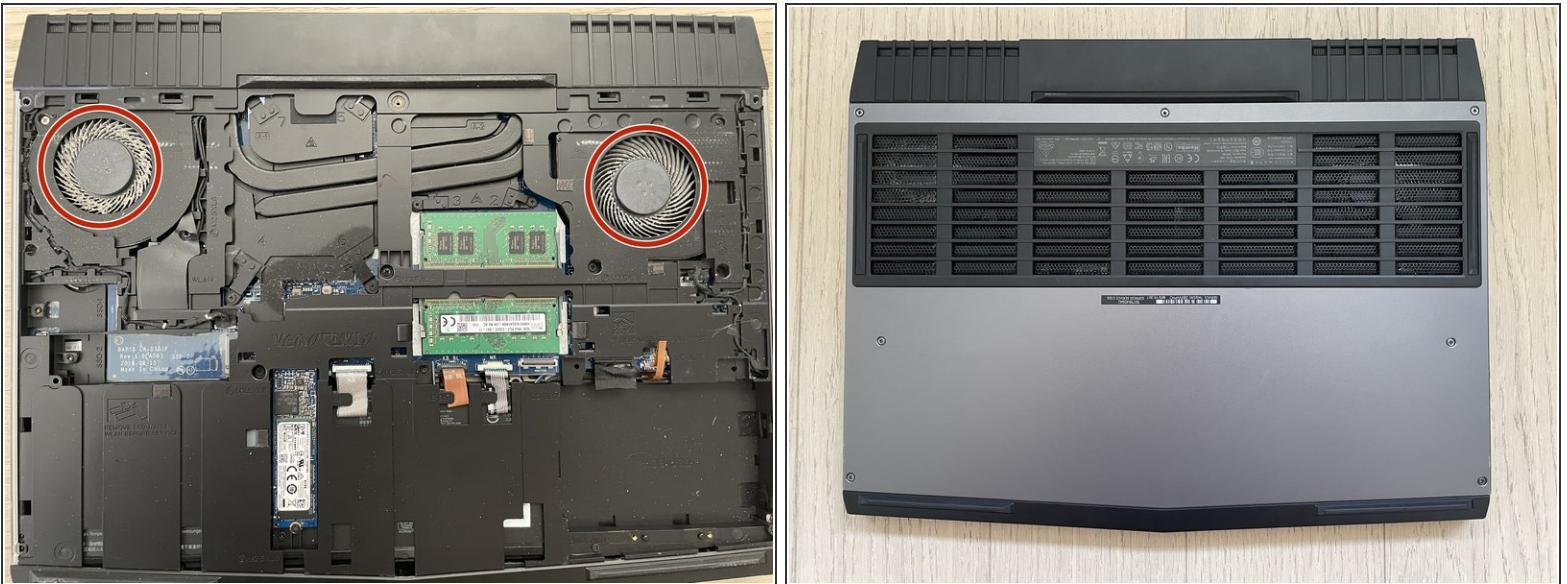
- Remove the seven M2.5x13 screws from the base cover.
- Remove the base cover carefully.
- ⓘ Save these screws for later.
- ⓘ The screw on the top middle of base cover cannot be removed after unscrewing. But it is okay to remove the base cover.

Step 3



- Remove the two M3x3 screws that are holding the bracket and one M2.5x8 screw holding the hard drive assembly .

Step 4



- Put bottom plate back on your laptop and secure the bottom plate with the screws removed previously.
- ☑ Prior to reassembly, clean the dust on fans as circled in picture if needed.

Step 5



- Your Alienware 15 R3 is ready to roll.

By removing the HDD from the laptop, BSOD will never happen again when you boot the laptop. Please note that, the storage space than it was in the past.