



Toshiba Satellite L45-S7423 Keyboard Replacement

This guide shows the user how to remove and install a keyboard for the Toshiba Satellite L45-S7423.

Written By: Stephen Sippel



INTRODUCTION

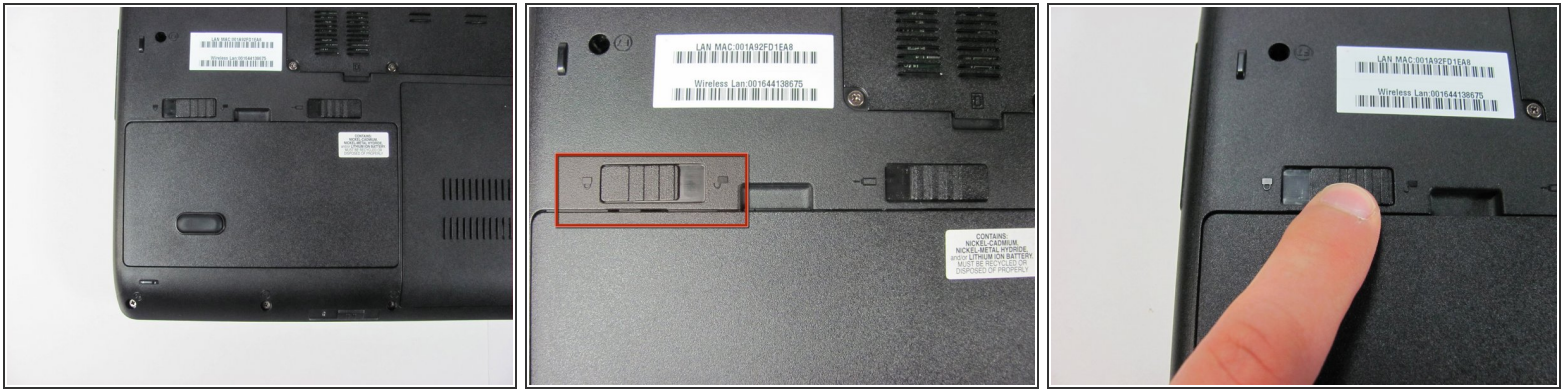
The keyboard is subject to some of the most abuse experienced by a laptop. Whether it is from over use or even water damage, the keyboard can stop working. With the removal a couple screws and the release of a few tabs, the keyboard can be replaced with little effort.



TOOLS:

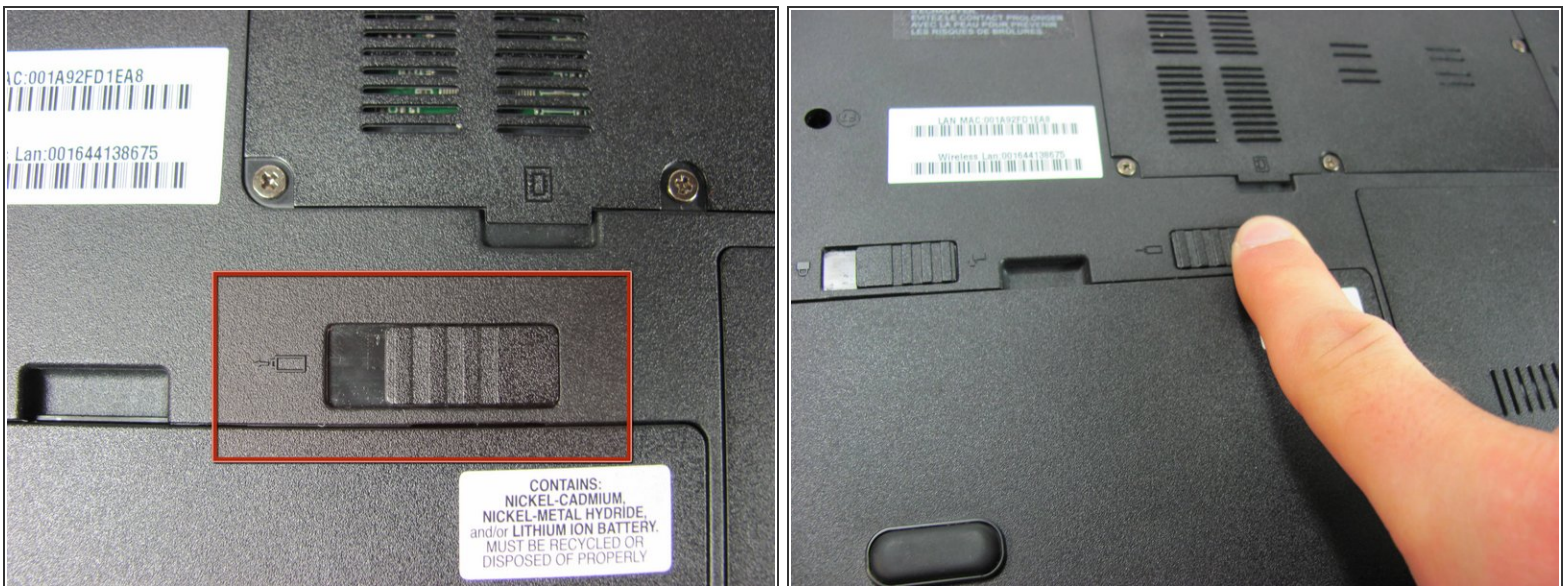
- [Phillips #00 Screwdriver](#) (1)
 - [Spudger](#) (1)
-

Step 1 — Battery



- Make sure the battery lock switch is switched to the unlocked position.
- The battery is unlocked when the battery lock switch is slid to the side with an image of an unlocked lock.

Step 2



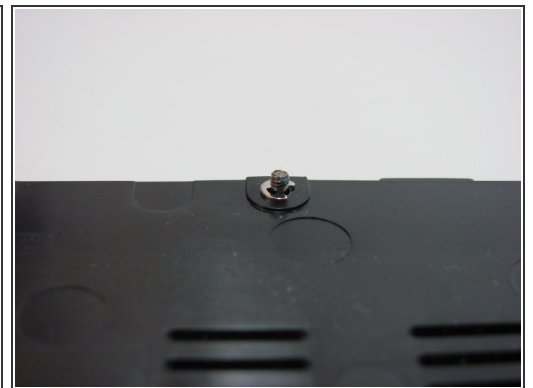
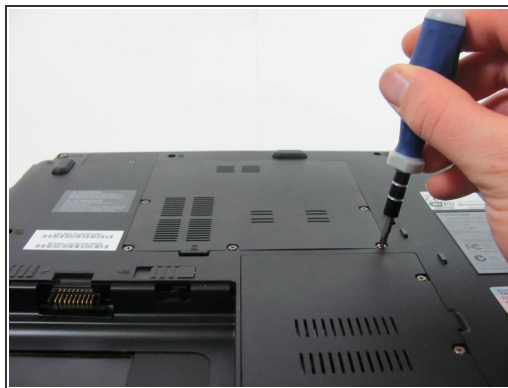
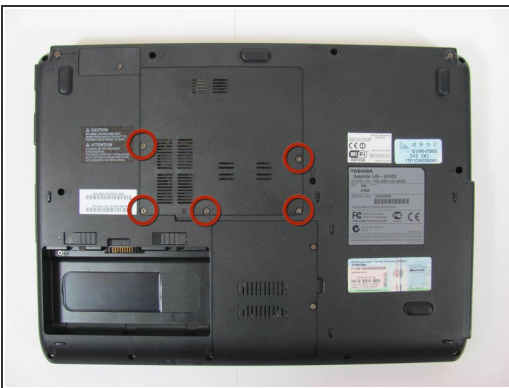
- Slide the battery release switch to the left.
- ⓘ The switch is spring loaded, so you must hold the switch in place while removing the battery.

Step 3



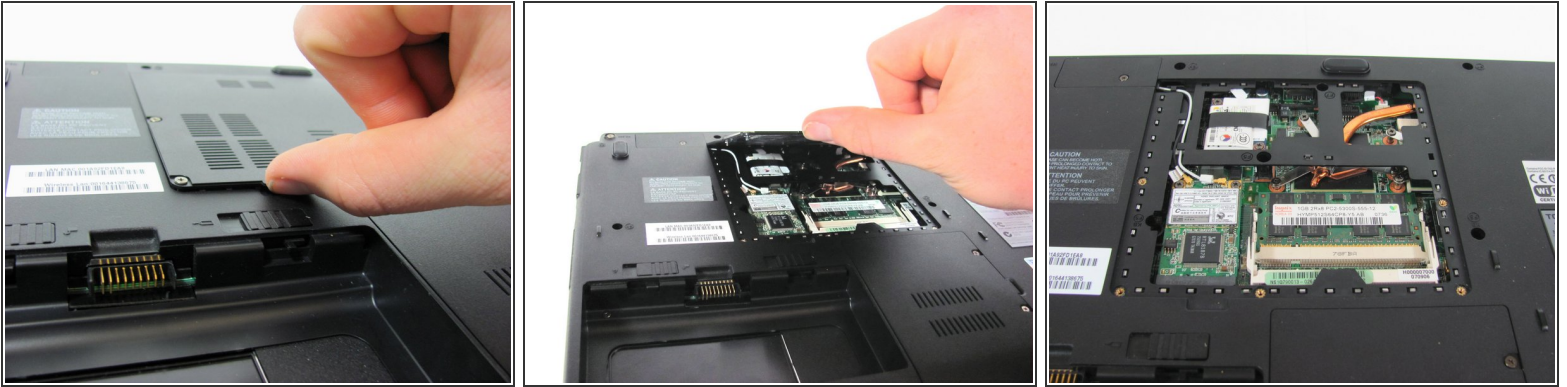
- Using a finger, lift up the battery.
- ☑ The battery release switch must be held in place.

Step 4 — Bottom Access Panel



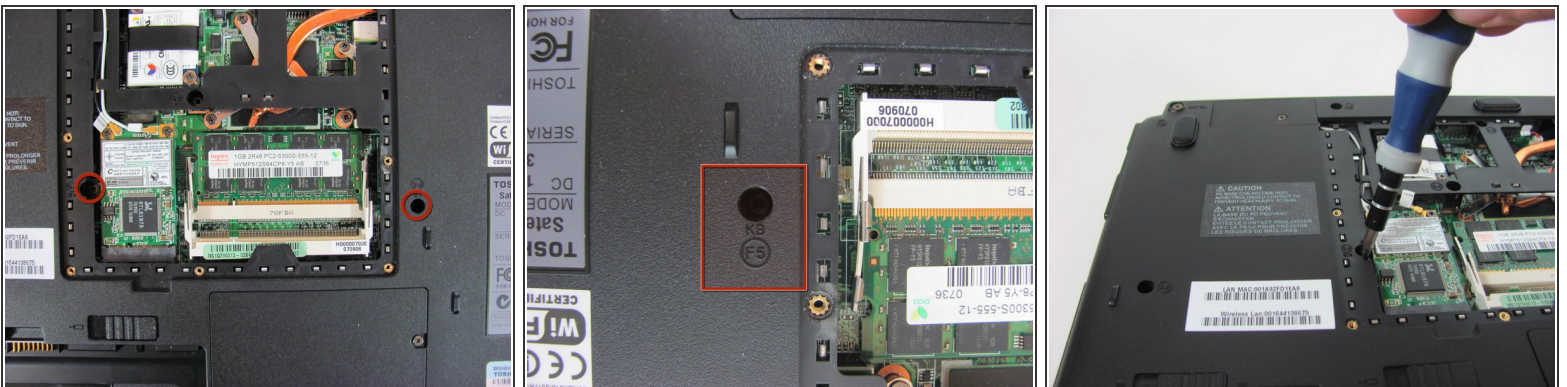
- Remove the 5 Phillips screws holding the panel in place.
- ⓘ These screws are permanently fastened to the panel; they are designed to be removed only partially to avoid loss.

Step 5



- Use a finger to remove the panel by lifting up on the provided removal tab.

Step 6 — Keyboard



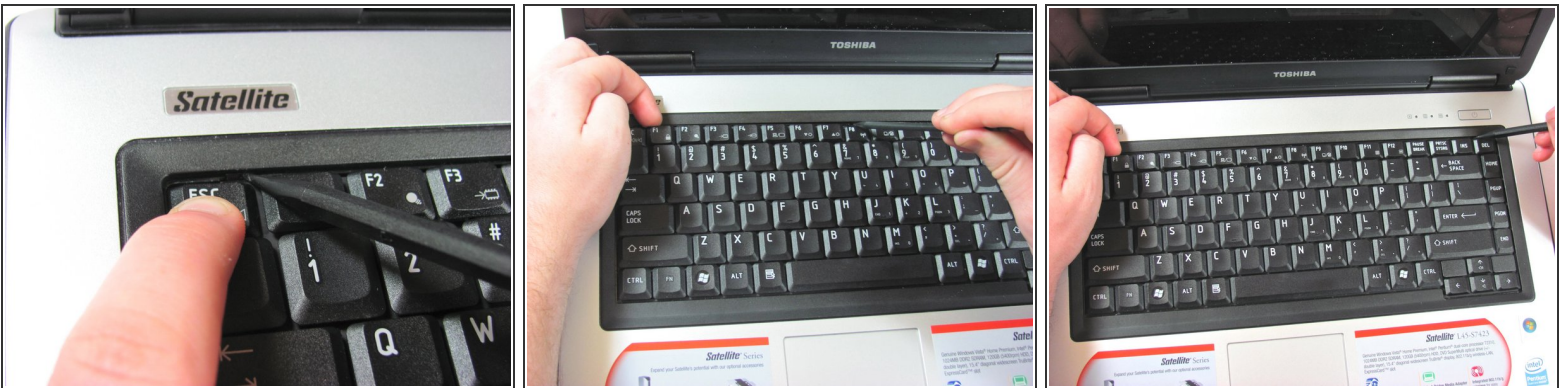
- Remove the two screws holding the keyboard in place.
 - Two 5.7 mm Phillips screws.
- ❗ 'KB' is written alongside the screw holes. This indicates the screws hold the keyboard in place.

Step 7



- There are three tabs holding the keyboard in place.
 - They are located under the ESC, F8, and DEL keys.
- Expose the tabs by pressing down on adjacent keys.

Step 8



- While you press down the ESC key, push the tab with the spudger to release that side of the keyboard.
 - Use a finger to prevent the keyboard from locking back in place.
- Repeat the previous step for the tabs under the F8 and DEL keys.

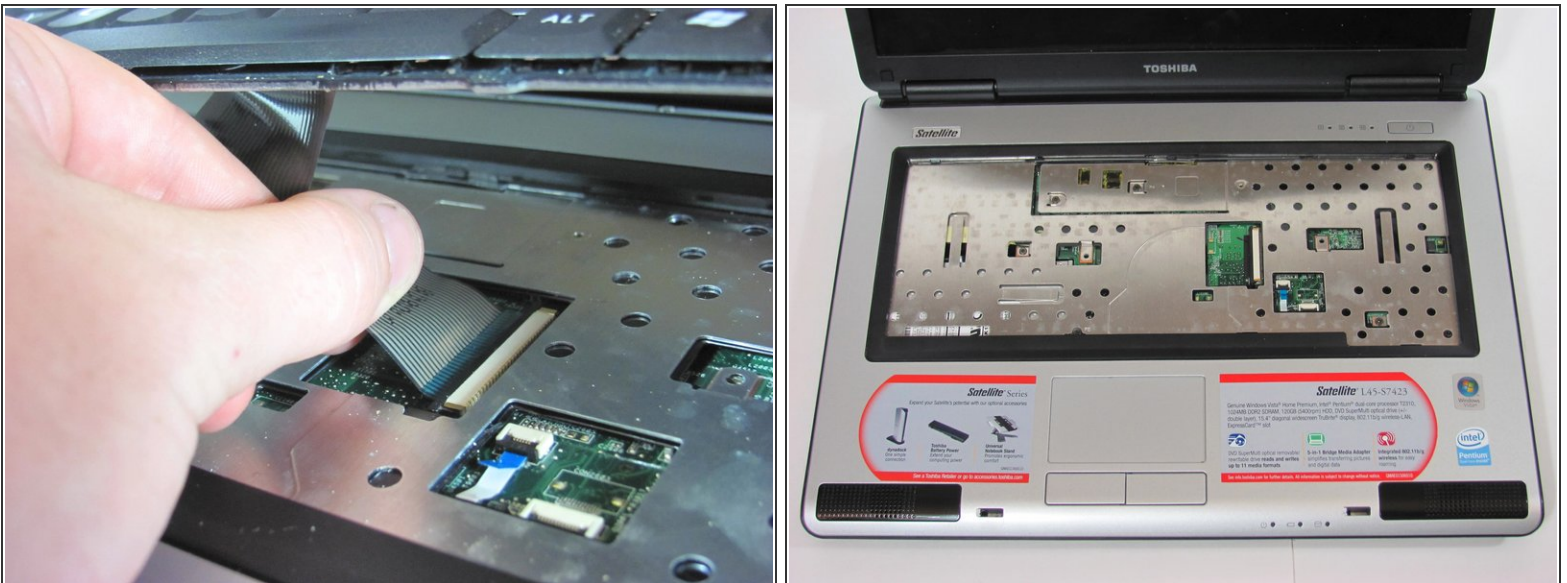
Step 9



- Pick up the keyboard. This exposes a cable that connects the keyboard to the laptop.

⚠ Lift the keyboard gently. The cable connecting it to the computer is a ribbon. If pulled too hard, the ribbon may be damaged.

Step 10



- Gently unplug the ribbon cable connecting the keyboard to the laptop by pulling horizontally.

To reassemble your device, follow these instructions in reverse order.