



# Samsung Galaxy Stardust Battery Replacement

How to replace a battery in a Samsung Galaxy Stardust SM-S766C(GP) TracFone.

Written By: Alan Kwong



---

## INTRODUCTION

This will show you how to replace the battery in a Samsung Galaxy Stardust (SM-S766C(GP)), a smartphone distributed by TracFone. This guide exists to help people who use this cheaper smartphone as an option and need to replace the battery instead of buying a new phone. While replacing this battery, be careful not to pierce or puncture the battery as the contents are dangerous to people. Please dispose of the battery in a safe manner.



### TOOLS:

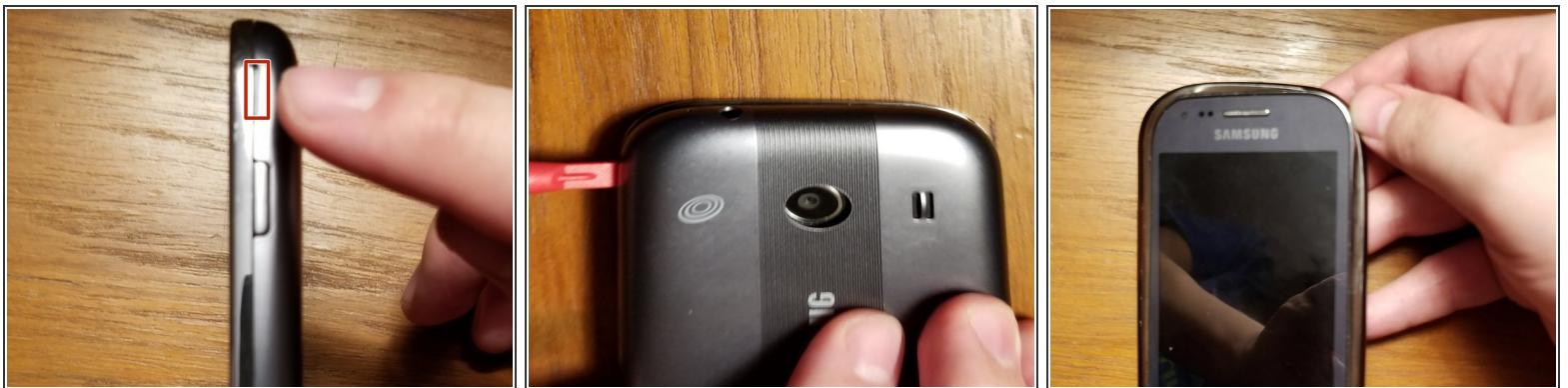
- [iFixit Opening Tools](#) (1)
-

## Step 1 — Battery



- Hold down the power button located on the right side of the phone.
- After five seconds, the screen will display three different options. Select the "power off" option.

## Step 2



- Place your finger or opening tool in the hole on the side of the phone.
- Carefully pull the back casing away from the phone while keeping the phone stable.



### Step 3



- Place both the phone and the phone casing next to each other with the battery facing upwards.
- Carefully lift the battery from the indent above the battery, then place the battery next to the phone.

### Step 4



- Take your new battery and look for the plus and minus signs on the bottom of the battery.
- Line up the signs to the three strips on the bottom of the phone.
- Carefully place the battery in until it is secure inside the phone.

## Step 5



- Take the back of the phone and line up the circular hole to the camera.
- Apply force to the back of the phone with your hand, until the back case snaps onto the phone and is secure.