



Canon PIXMA TS3300 Ink Cartridge Replacement

How to replace the ink cartridge in a Canon Pixma TS3300 printer.

Written By: Meghan Reed



INTRODUCTION

The purpose of this guide is to inform you on how to change the ink in a printer, specifically a Canon PIXMA TS3300. The cartridge compartment is located at the front of the printer under the large Canon logo. The controls for the printer itself, the power button and lights, are located on top of the printer. In order to change the ink, you will need Canon fine cartridges. 245 is for black ink and 246 is for colored ink.

<https://ij.manual.canon/ij/webmanual/Man...>



PARTS:

- [Canon Ink Cartridge](#) (1)

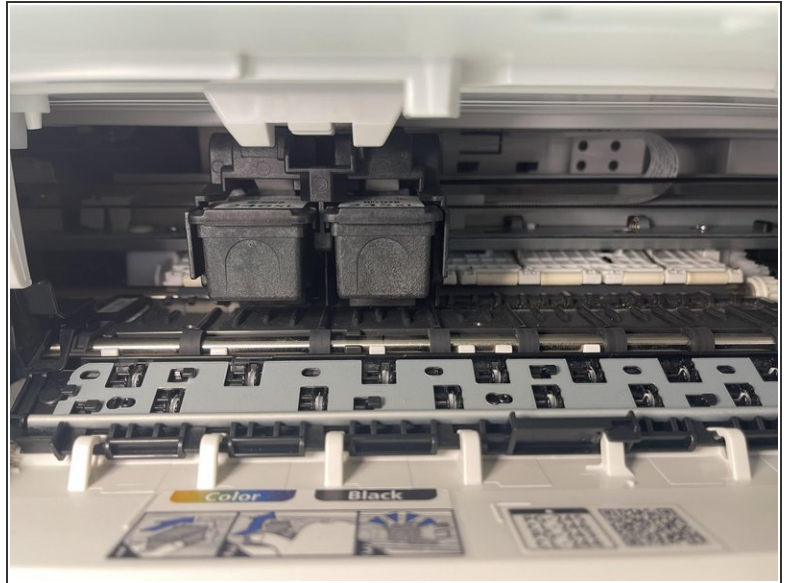
Step 1 — Ink Cartridge



- Press the power button in the top left corner to turn on the printer.

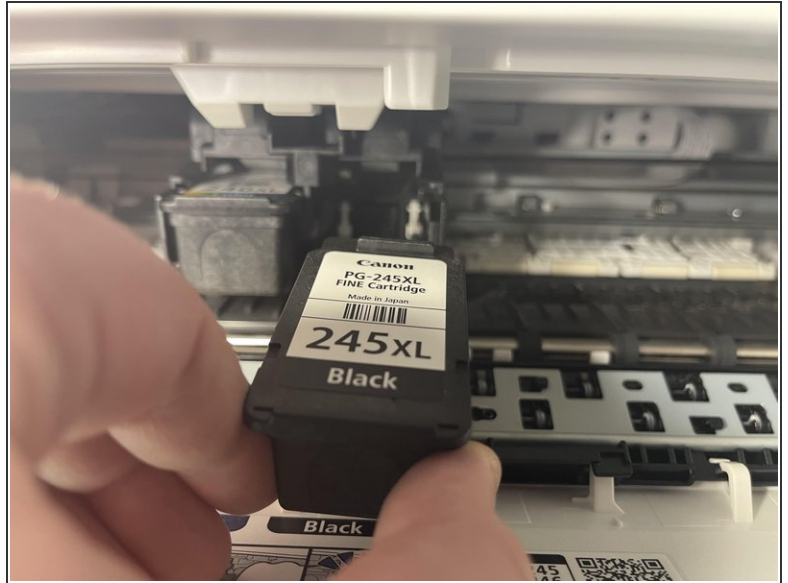
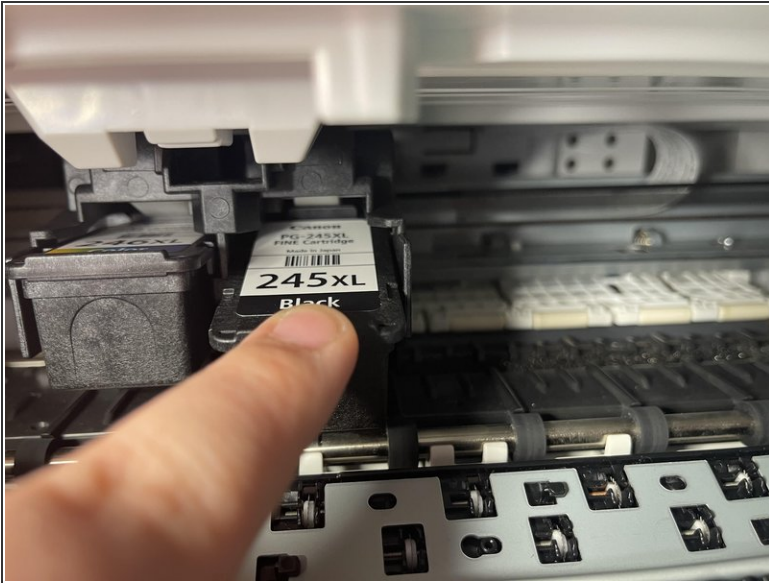
i The light next to the button will turn green if the printer is on.

Step 2



- Lift the cartridge compartment located in the front of the printer to gain access on the inside of the printer.
- Allow for the cartridge holder to move into view.

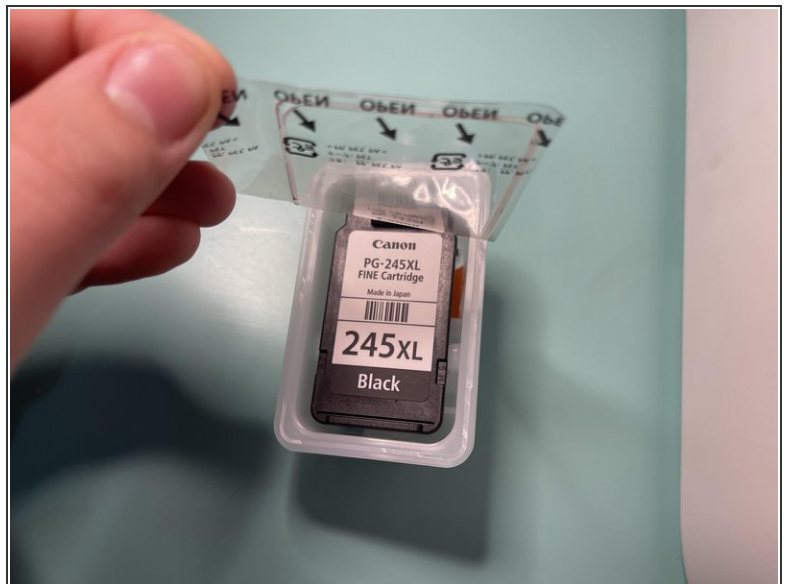
Step 3



 The cartridge should be located in the center of the printer.

- Push down on the cartridge and pull it out.

Step 4



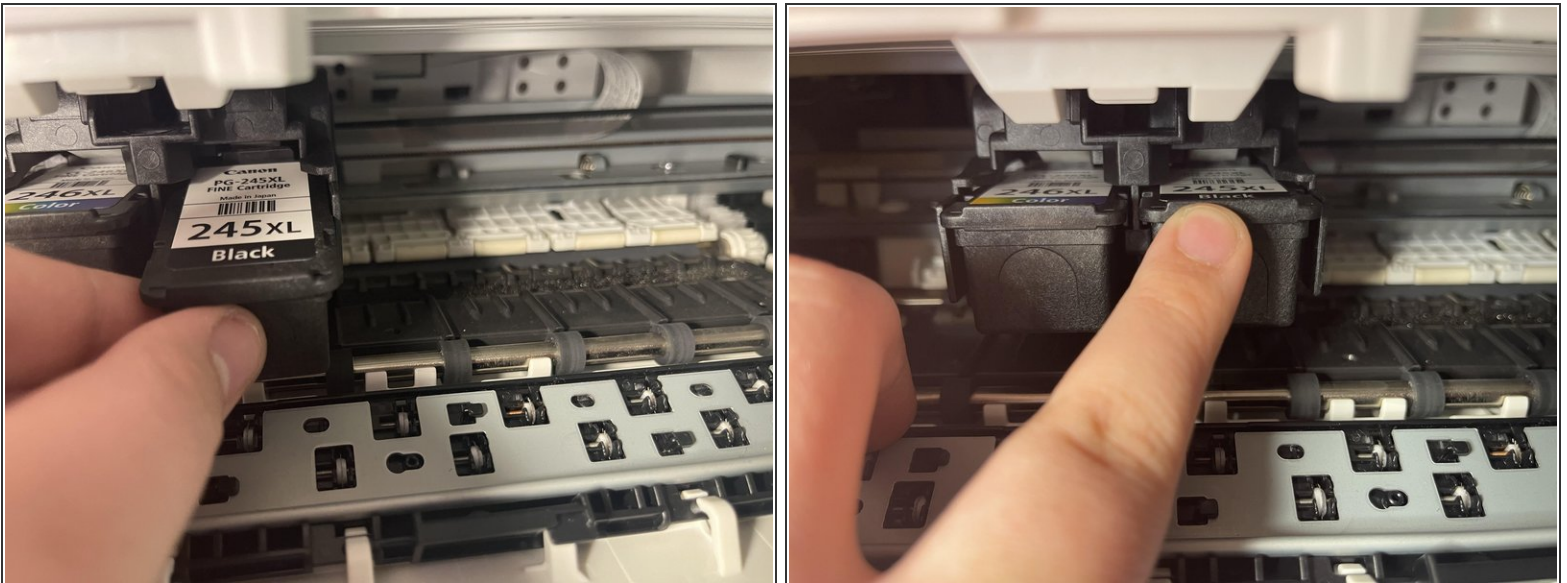
- Prepare the new cartridge by peeling off the cover.

Step 5



- Peel off the orange sticker on the left side of the cartridge.

Step 6



- Insert the cartridge at an angle to the cartridge holder.
- Push upward on the cartridge until a clicking sound is heard.

Step 7



- Close the cartridge compartment cover.
- ⓘ The printer should make a sound from the cartridges going back to their resting position.

Allow for the cartridge holder to reposition and you are ready to print!