



# Dell Latitude E5550-5550 Coin Cell Battery Replacement

This is a guide on how to replace the coin cell battery for this DELL computer.

Written By: Hezekiah Brown

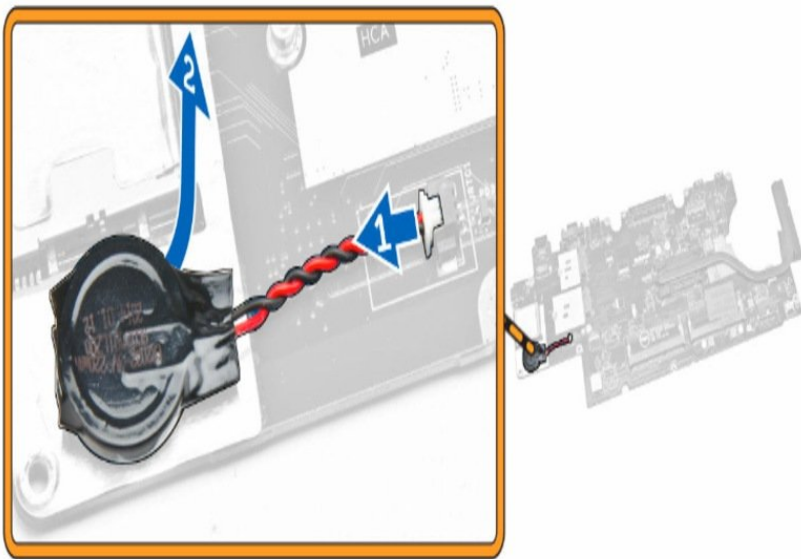
## Step 1 — Remove the following below.



**⚠ Shut down your computer. Disconnect all power sources before opening the computer cover or panels.**

- Remove the battery, base cover, memory module, and hard-drive assembly, keyboard trim, keyboard [itself], palmrest, display hinge-brackets, display assembly, system fan, and system board from the computer.

## Step 2 — Disconnect & remove coin-cell battery.



- Disconnect the coin-cell battery cable from its connector on the system board [1].
- Pry the coin-cell battery to release from the adhesive and remove from the system board [2].

**Step 3 — Put coin-cell battery into its slot; connect coin-cell battery to cable.**

- Place the coin-cell battery into its slot on the system board.
- Connect the coin-cell battery cable to its connector on the system board.

**Step 4 — Install the following below.**

- Install the system board, system fan, display assembly, display-hinge brackets, palmrest, keyboard [itself], keyboard trim, hard-drive assembly, memory, battery, and base cover for the computer.

To reassemble your device, follow these instructions in reverse order.