



Dell Latitude E5550-5550 Hard Drive Replacement

This is a guide on how to replace a hard drive for this DELL computer.

Written By: Hezekiah Brown

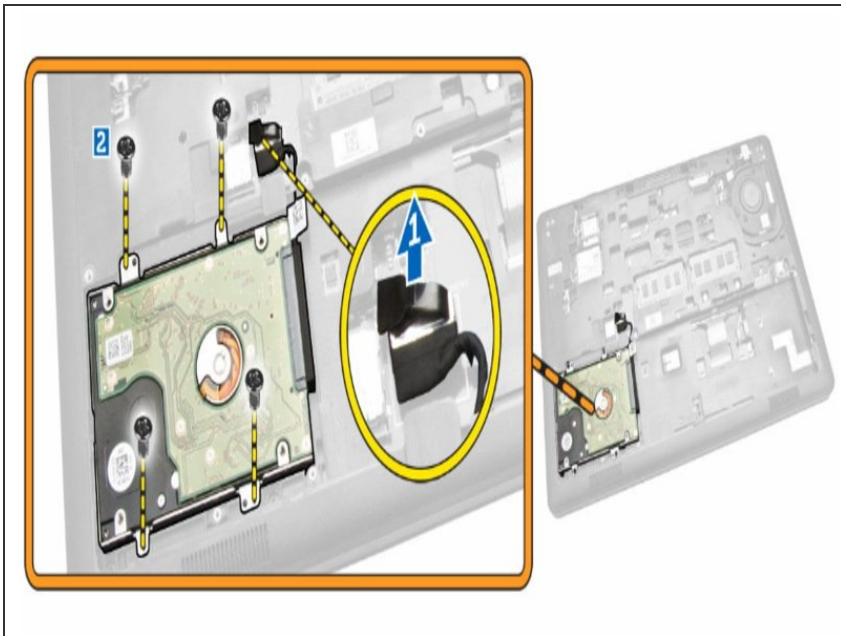
Step 1 — Remove battery and base cover.



⚠ Shut down your computer. Disconnect all power sources before opening the computer cover or panels.

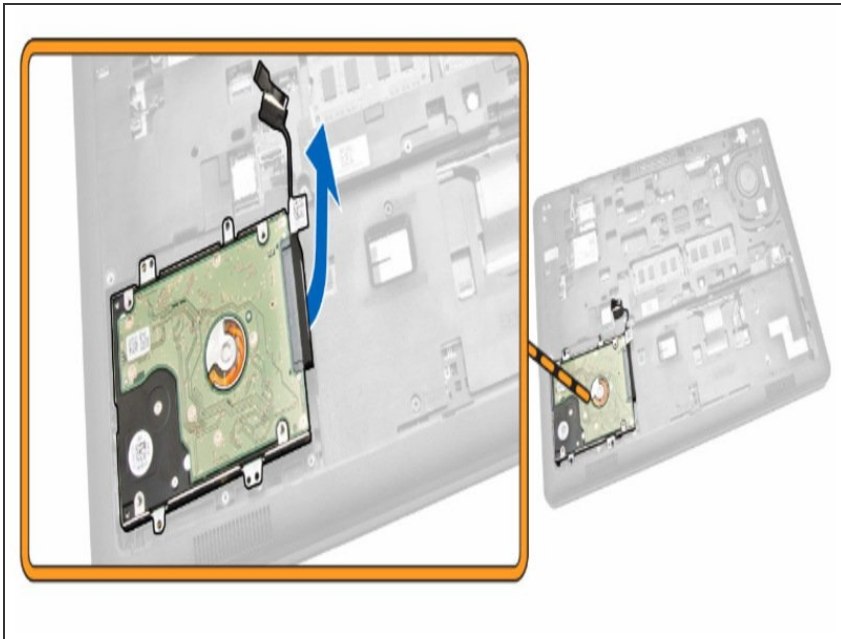
- Remove the battery and base cover from the computer.

Step 2 — Remove screws and cable.



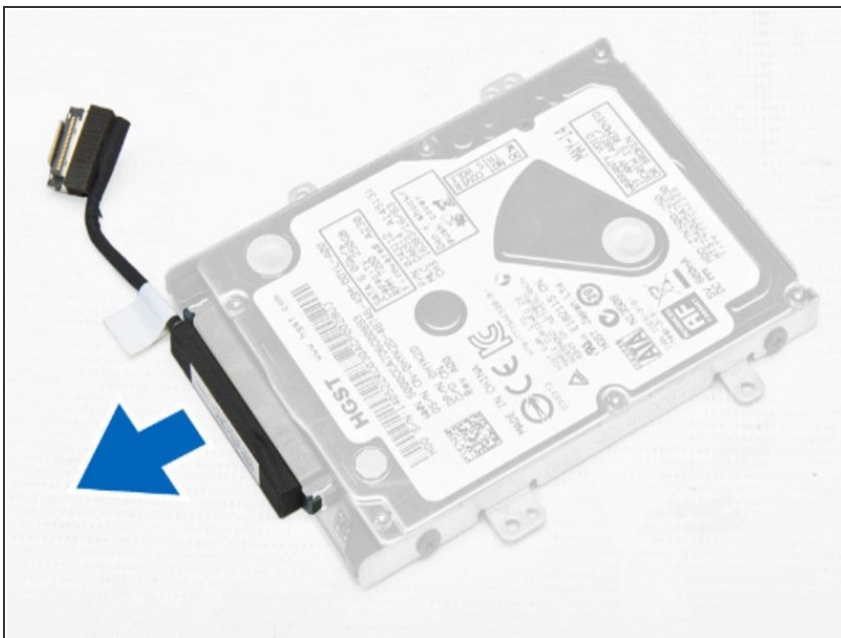
- Disconnect the hard-drive cable from its connector on the system board [1] .
- Remove the screws that secure the hard-drive assembly to the computer [2].

Step 3 — Remove hard drive assembly



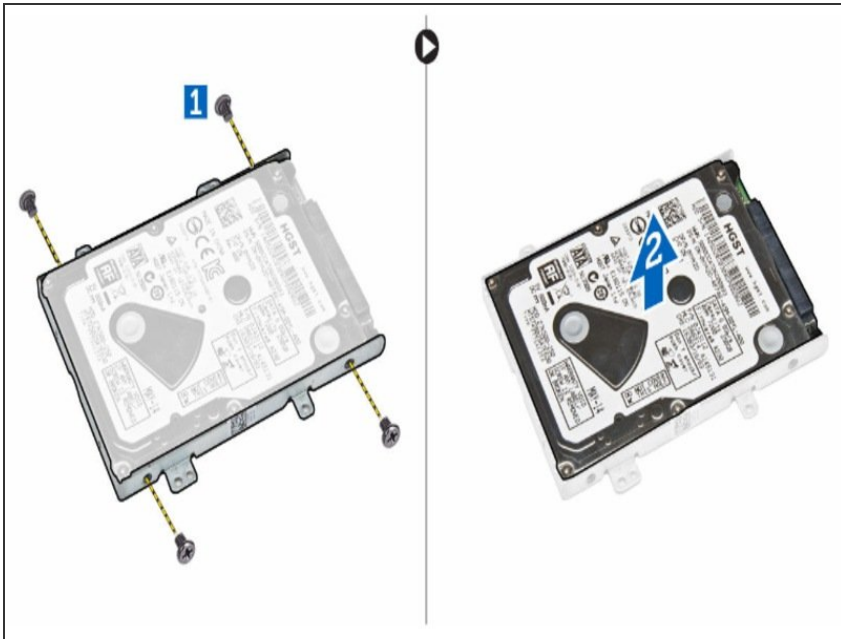
- Remove the hard-drive assembly from the computer.

Step 4 — Release hard-drive cable



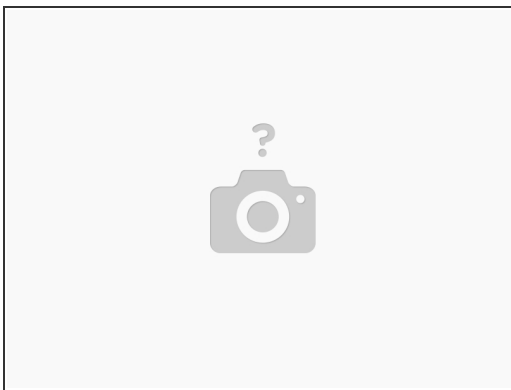
- Pull to release the hard-drive cable from its connector.

Step 5 — Remove screws to hard-drive bracket.



- Remove the screws that secure the hard-drive bracket to the hard drive [1] and remove the hard drive from the hard-drive bracket [2].

Step 6 — Place new hard drive on bracket and screws.



- Place the hard-drive bracket on the hard drive to align the screw holders and tighten the screws to secure the hard-drive bracket.

Step 7 — Connect cable to hard drive connector.



- Connect the hard-drive cable to its connector on the hard drive.

Step 8 — Put in hard-drive assembly.



- Place the hard-drive assembly into its slot on the computer.

Step 9 — Connect hard-drive cable to system board connector.

- Connect the hard-drive cable to its connector on the system board.

Step 10 — Tighten screws to secure hard drive assembly.

- Tighten the screws to secure the hard-drive assembly to the computer.

Step 11 — Install the battery and base cover.



- Install the battery and base cover.

To reassemble your device, follow these instructions in reverse order.