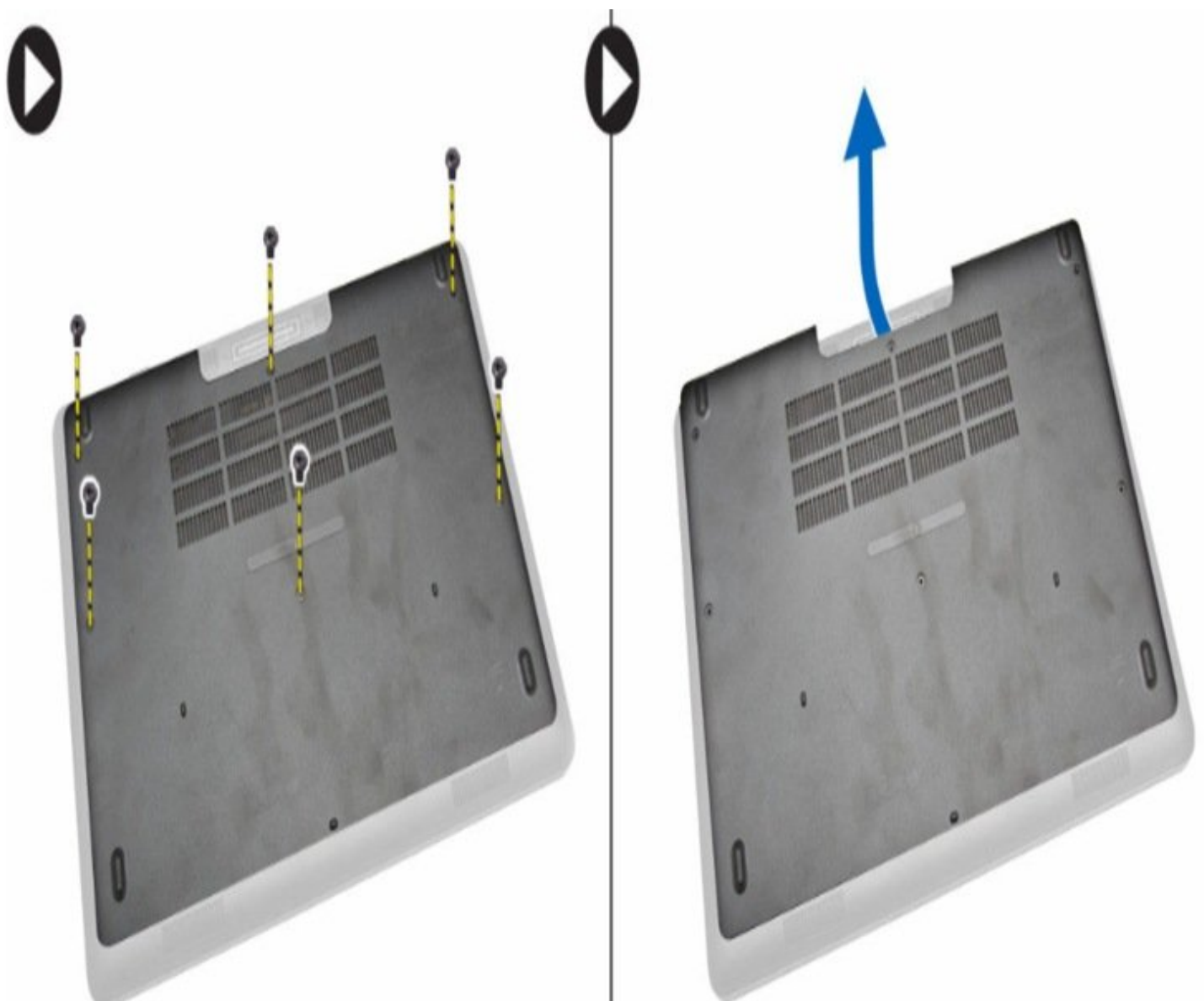




# Dell Latitude E5550-5550 Battery Replacement

The Dell Latitude E5550 Battery Replacement Guide will give individuals the information and knowledge to safely remove and replace laptop batteries.

Written By: Jaden Graham

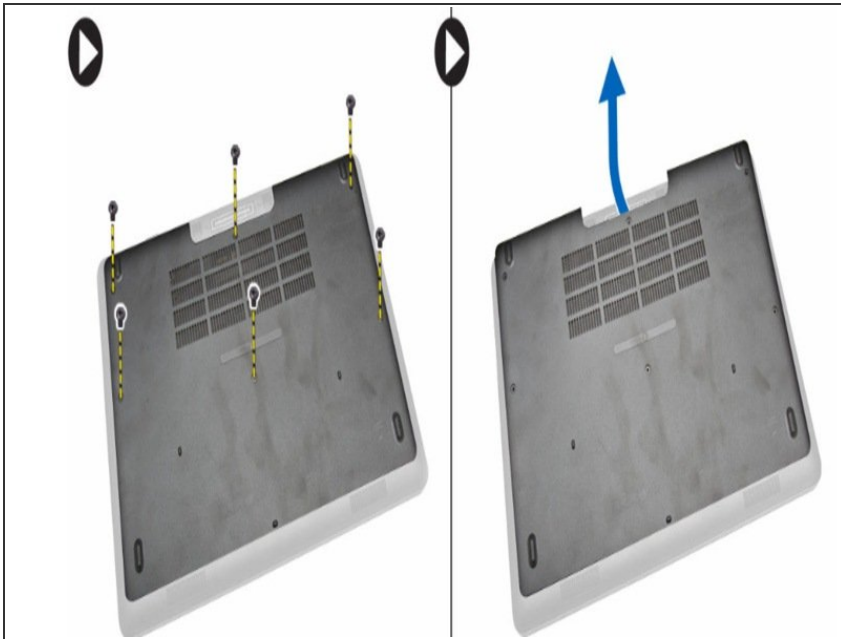




## TOOLS:

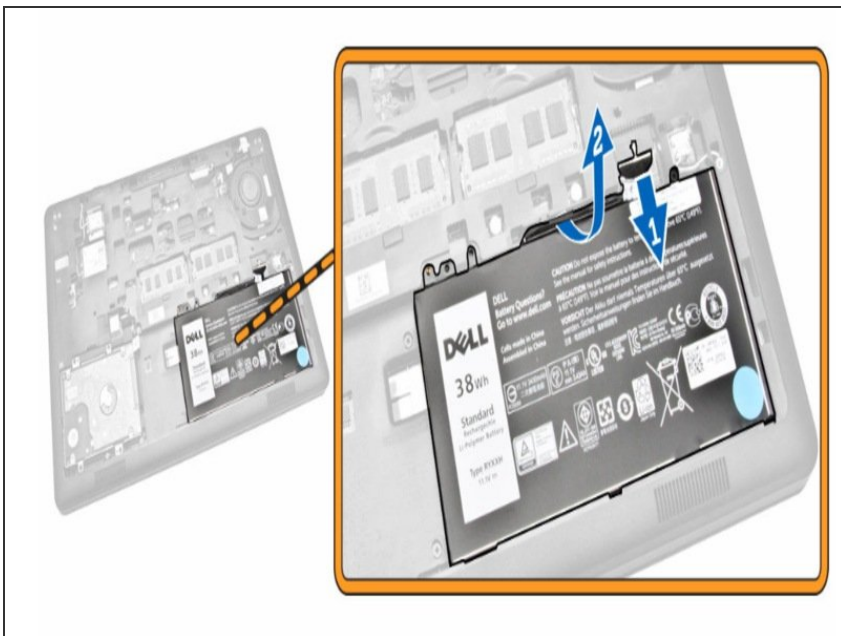
- [Phillips #0 Screwdriver](#) (1)
-

## Step 1 — Remove Cover



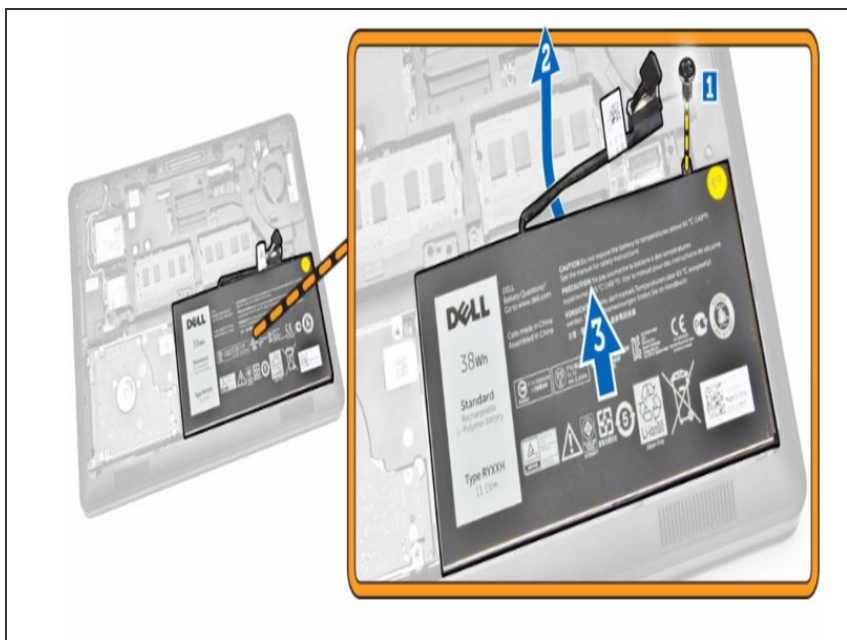
- -Remove the sides on the back of the computer to take off the cover for the battery.

## Step 2 — Remove the battery



- Disconnect battery cable from the connector and release cable from its routing channel.

## Step 3 — Screw removal



- Remove the screw that secures the battery and lift and push to remove the battery from the computer.

## Step 4 — Insert the new battery



- -Insert the battery into its place on the computer.

## Step 5 — Route the cable



- Route the battery cable through its routing channel.

## Step 6 — Tighten the battery screw



- Tighten the screw to secure the battery to the computer.

## Step 7 — Connect the battery cable



- Connect the battery cable to its connector on the system board.

## Step 8 — Base cover installation



- Install the base cover.

## Step 9 — Connect the computer to outlets



- Connect your computer and all attached devices to their electrical outlets.

## Step 10 — Computer power on



- Turn on your computer.