



Western Digital Elements HD Teardown

Opening up WD Elements portable external harddrive. Spoiler: Not a SATA HDD, it has a single-board which houses USB and HDD circuit.

Written By: Zarmaan Hassan Khan



INTRODUCTION

Hello, This drive fell and stopped showing up so i thought why check the HDD inside...

Sadly it uses a proprietary HDD which doesn't have SATA but directly USB port.

It doesn't have a SATA to USB interposer :(



TOOLS:

- [Flathead Screwdriver](#) (1)
-

Step 1 — Western Digital Elements HD Teardown



- Insert wisdom here.

Step 2



- Guitar Pick is very helpful here

Step 3



- Insert wisdom here.

Step 4



- Insert wisdom here.

Step 5



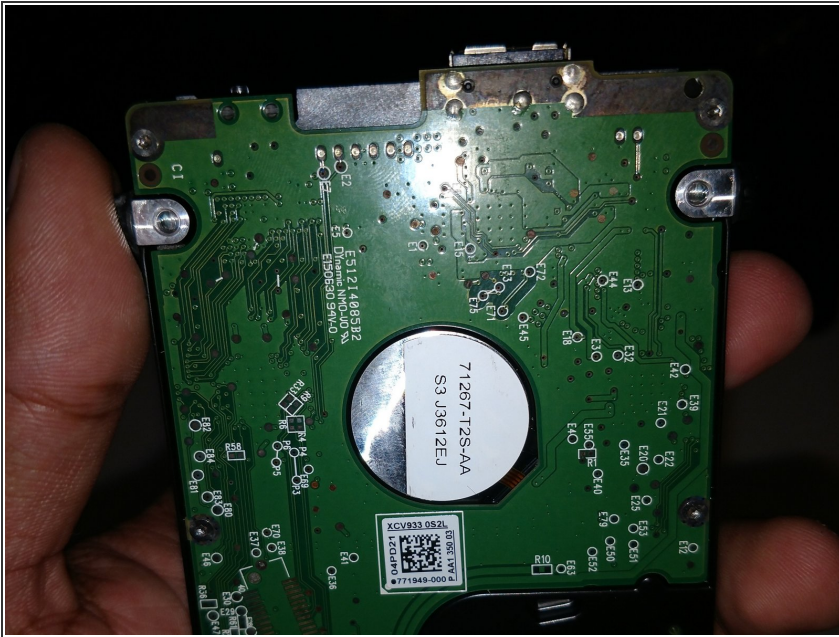
- Insert wisdom here.

Step 6



- Insert wisdom here.

Step 7



- Insert wisdom here.

Step 8



- Insert wisdom here.