



How to Fix the Scroll Wheel of a Wired HP Mouse

Repairing the scroll wheel of your wired HP computer mouse.

Written By: William Riley



INTRODUCTION

If your HP wired computer mouse (ID: KY619AA) isn't effectively scrolling or allowing you to use the middle mouse button, and tends to rattle when moved, use this guide to reattach the scroll wheel axle.

The scroll wheel for this mouse works by attaching to a small axle that is used to keep the wheel in place and to allow depressing the wheel to serve as a "button click" interaction.

Before using this guide, attempt to scroll the wheel yourself. If you are met with resistance or the wheel dips down to the right, then the wheel axle is likely the problem and this is the guide for you.

Before beginning this repair, ensure that the mouse is unplugged from any source of electricity.



TOOLS:

- [Phillips #00 Screwdriver](#) (1)

3 mm

- [Slip Joint Pliers](#) (1)

at least 19 mm (3/4 inches) in depth

- [Small Chain Nose Pliers](#) (1)

- [Polyurethane Glue](#) (1)

any type of glue that works with plastic

Step 1 — How to Fix the Scroll Wheel of a Wired HP Mouse



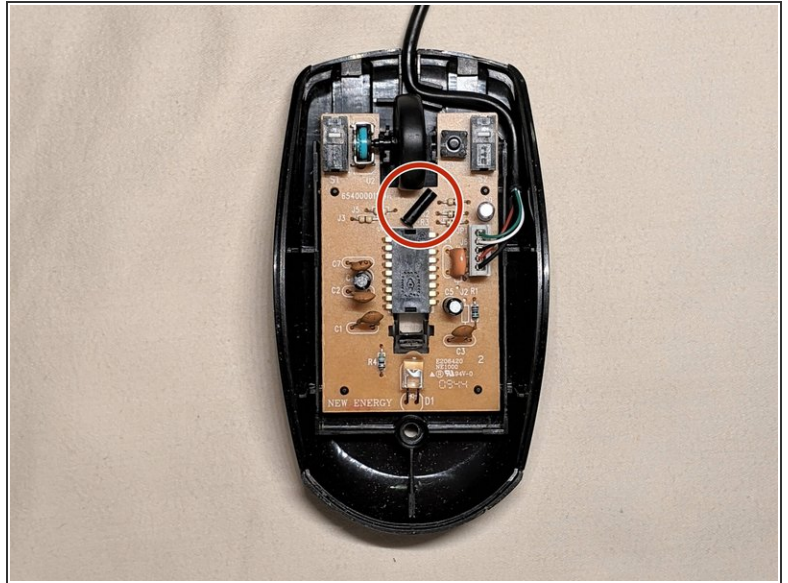
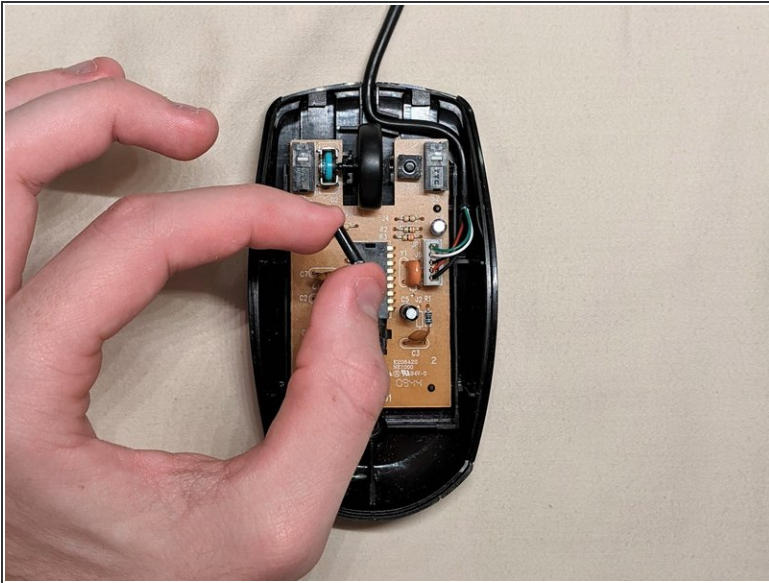
- Flip the mouse upside down and remove the screw on the bottom of the mouse casing using a Phillips #00 screwdriver.

Step 2



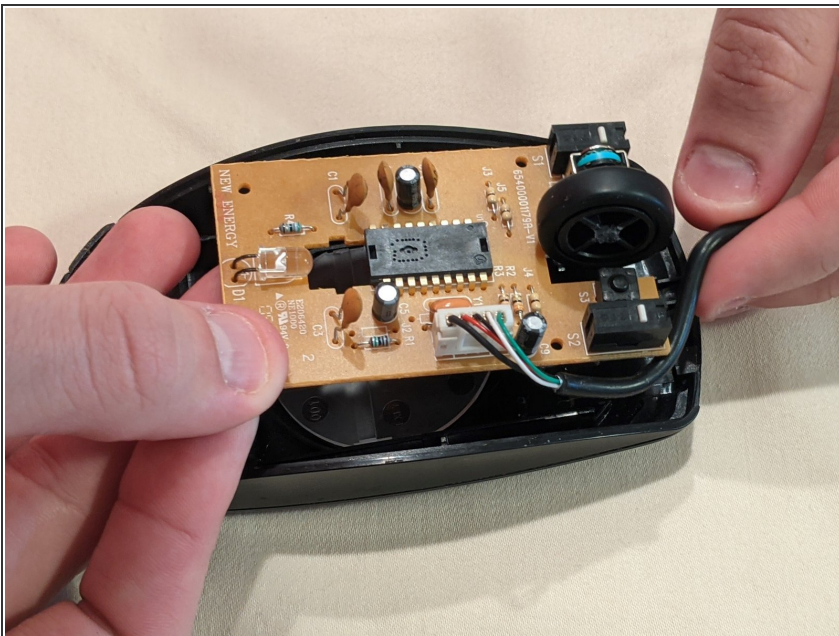
- Gently flip the mouse back over and remove the upper half of the mouse casing.

Step 3



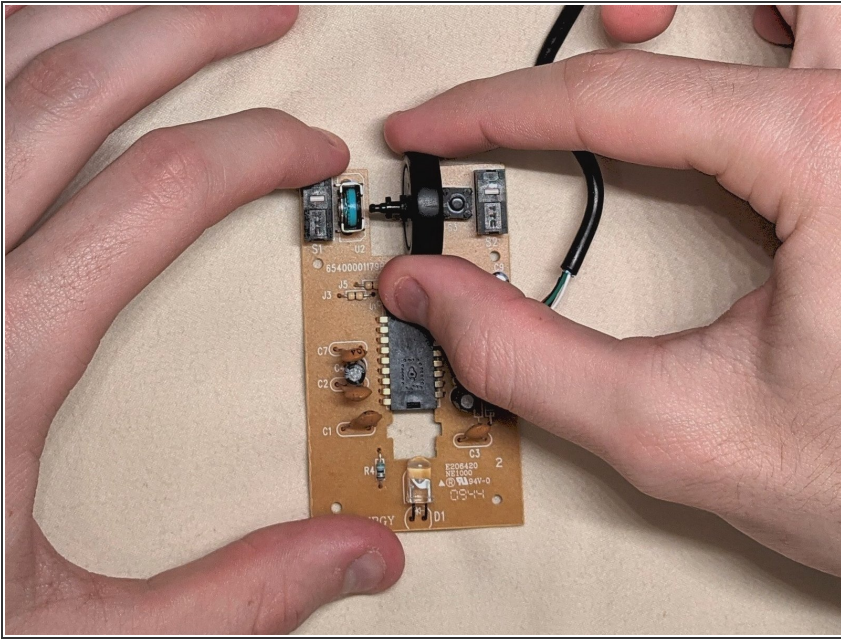
- Remove the broken axle that has become detached from the scroll wheel.
- ⓘ The broken axle may be difficult to locate, but should not have been able to leave the mouse casing unless it has previously been opened.

Step 4



- Carefully remove all circuit components from the mouse and set on a flat surface.
- ⓘ The circuit board is a single unit that should be able to be removed easily all at once.

Step 5



- Gently remove the scroll wheel by pulling it away from the rotary sensory mechanism.
- ❗ The rotary sensory mechanism is the small green component of the circuit board that detects scrolling movement.

Step 6



- Place the scroll wheel inside the jaws of the basic pliers such that the broken side is facing up.

Step 7



- Holding the axle with a pair of small pliers, place a small amount of glue on the broken end of the axle.

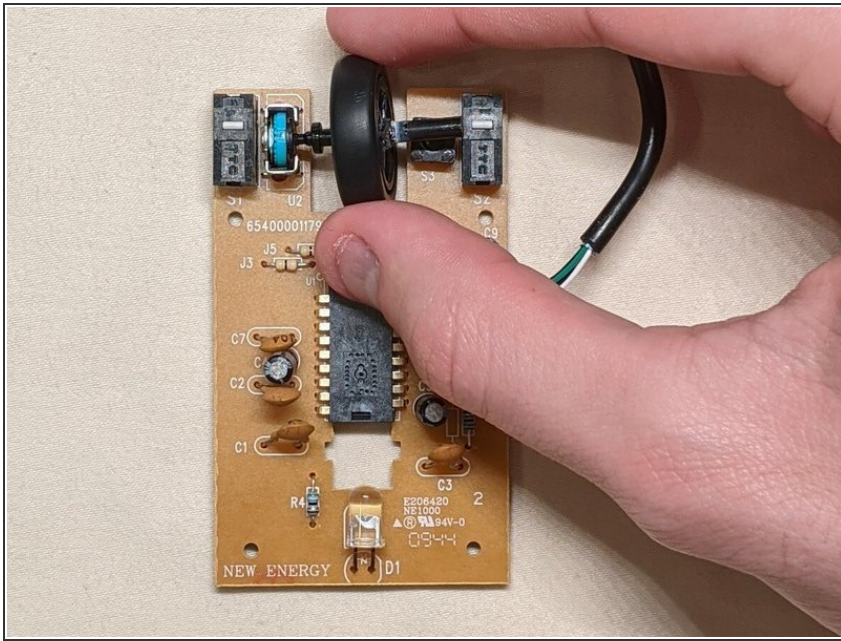
⚠ Be careful to not get glue on yourself or any of the circuit components.

Step 8



- Place the axle on the scroll wheel in the position of best fit, and allow to sit for several hours to dry.

Step 9



- Return the scroll wheel to the rotary sensory mechanism.
- ⓘ The axle should sit over the middle mouse button input sensor which is directly across the circuit board from the rotary sensory mechanism.

To reassemble your device, follow these instructions in reverse order.