



# How to Clean the DR-160 Submersible Water Pump

Like most cats, my cat doesn't want to drink...

Written By: Langston eldred



# INTRODUCTION

Like most cats, my cat doesn't want to drink still water. To keep the water moving, I got him a water fountain. I have noticed that the amount of water that came out of the fountain was slowly decreasing. So I decided to take a look at the pump. After taking apart the pump, I saw that the blades were covered in hair, and it was binding up and not pumping correctly.

If the DR-160 Submersible Water Pump for your pet water fountain is not working properly, follow this guide to clean the blades and get it working again. This guide is simple and safe to complete.

---

## TOOLS:

[Tweezers](#) (1)  
[Dish Soap](#) (1)  
[6-in-1 Screwdriver](#) (1)  
[Warm water](#) (1)

---

## Step 1 — How to Clean the DR-160 Submersible Water Pump



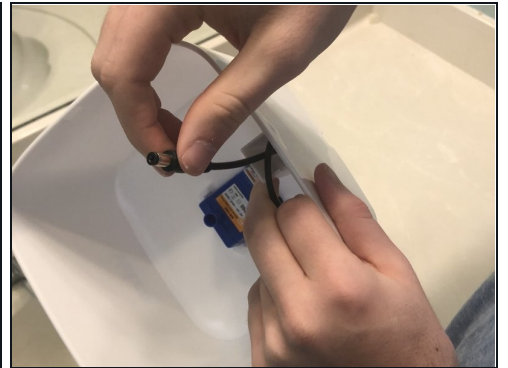
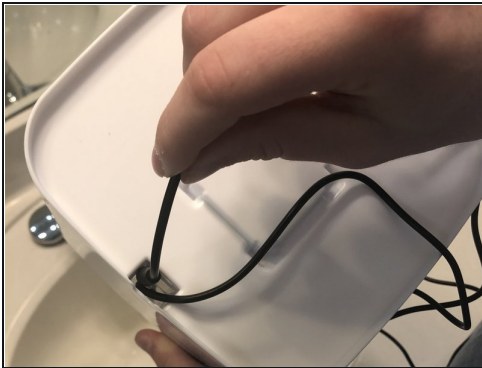
- Before you begin, remove the cord from the wall adaptor. Do this by pulling down on the cord.

## Step 2



- Empty the fountain by dumping the water into the sink.

## Step 3



- Remove the wire attached to the pump to free it from the fountain by unplugging the cord from the AC adapter. Then take the end of the wire and push it through the open hole.



## Step 4



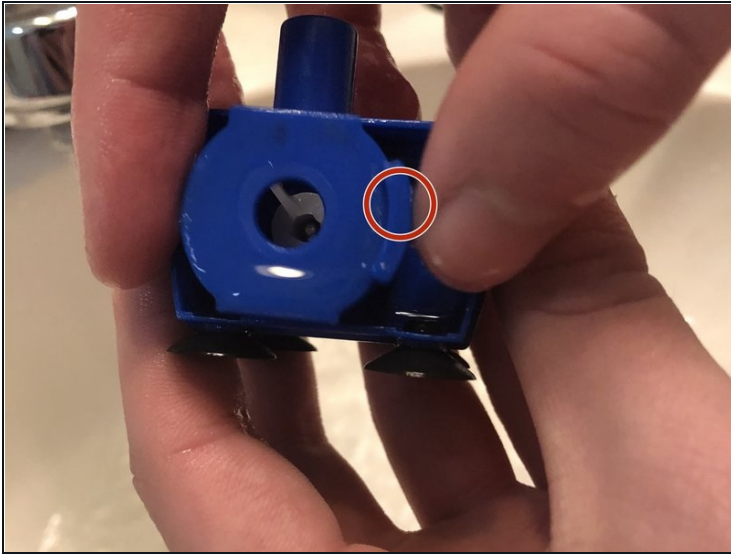
- Remove the pump from the fountain by grabbing both sides of the pump and the basin, then pulling the pump out.

## Step 5



- Take your flathead screwdriver and pry along the seam of the front face plate of the pump. Once it is loosened, pull it off with your hands.

## Step 6



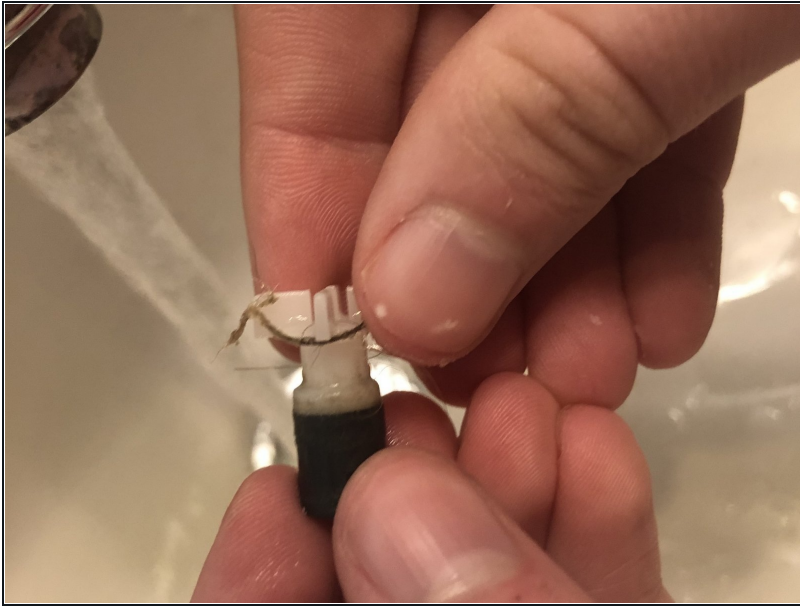
- To remove the inside cover pull on the tab shown in the picture.

## Step 7



- Using tweezers grab the blades and pull straight out.
- ① This might be tricky to do, because there is a magnet that holds the blades in. It might take you a few tries to get the blades out.

## Step 8



- Use your hands to pull the hair off of the blades. Remove hair from around the blades too.

## Step 9



- Clean the pump with warm water and soap.

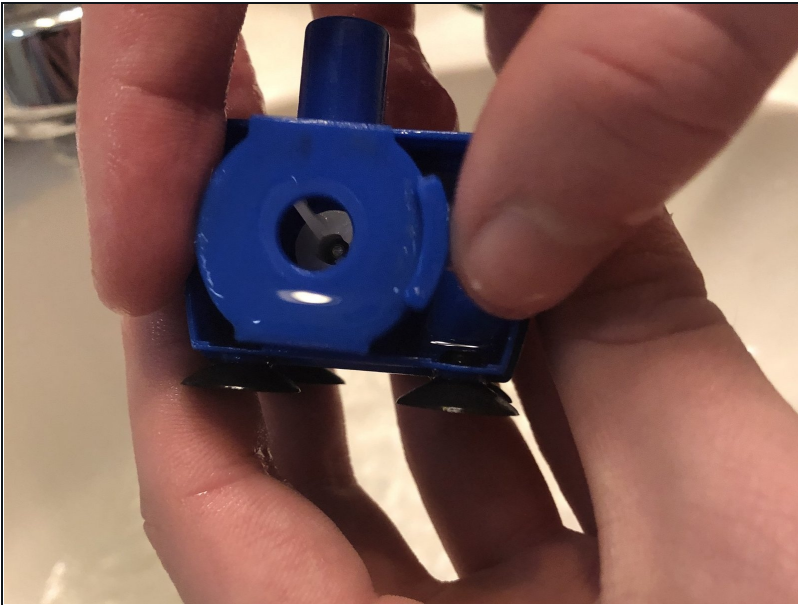


## Step 10



- Place the blades back into their location in the pump. There isn't a certain way the blades go in.

## Step 11



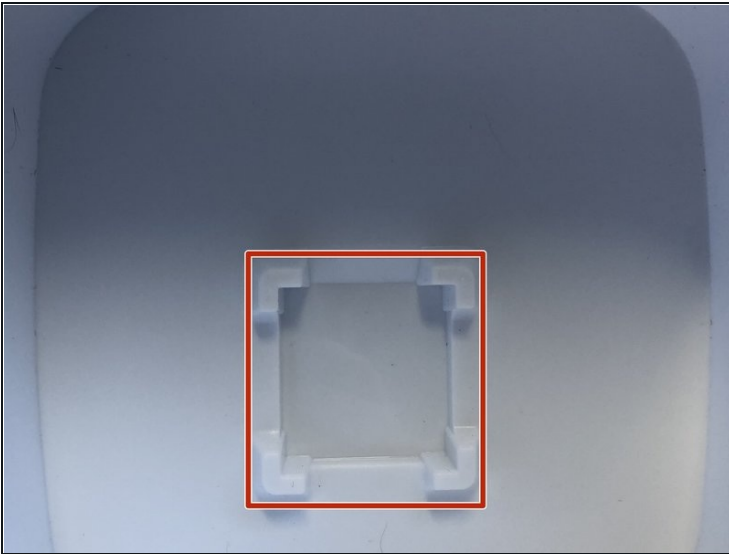
- Replace the inside cover with the tab on the right. Press it down to secure it.

## Step 12



- Take the front face plate and place it onto the pump. You should hear a snapping sound when face plate is fully on. The snapping sound comes from the tabs on the front face plate popping back into place.

## Step 13



- Place the pump back into the fountain. In the bottom of the basin there is a indent (shown in picture). This is where the pump goes.



## Step 14



- Feed the wire back through the channel in the side of the fountain.

## Step 15



- Fill the fountain with water and it is ready to plug in and use.

---

After replacing the fountain cover back on top of the basin and plugging the pump back into the wall adaptor. Your pet fountain will work like new