

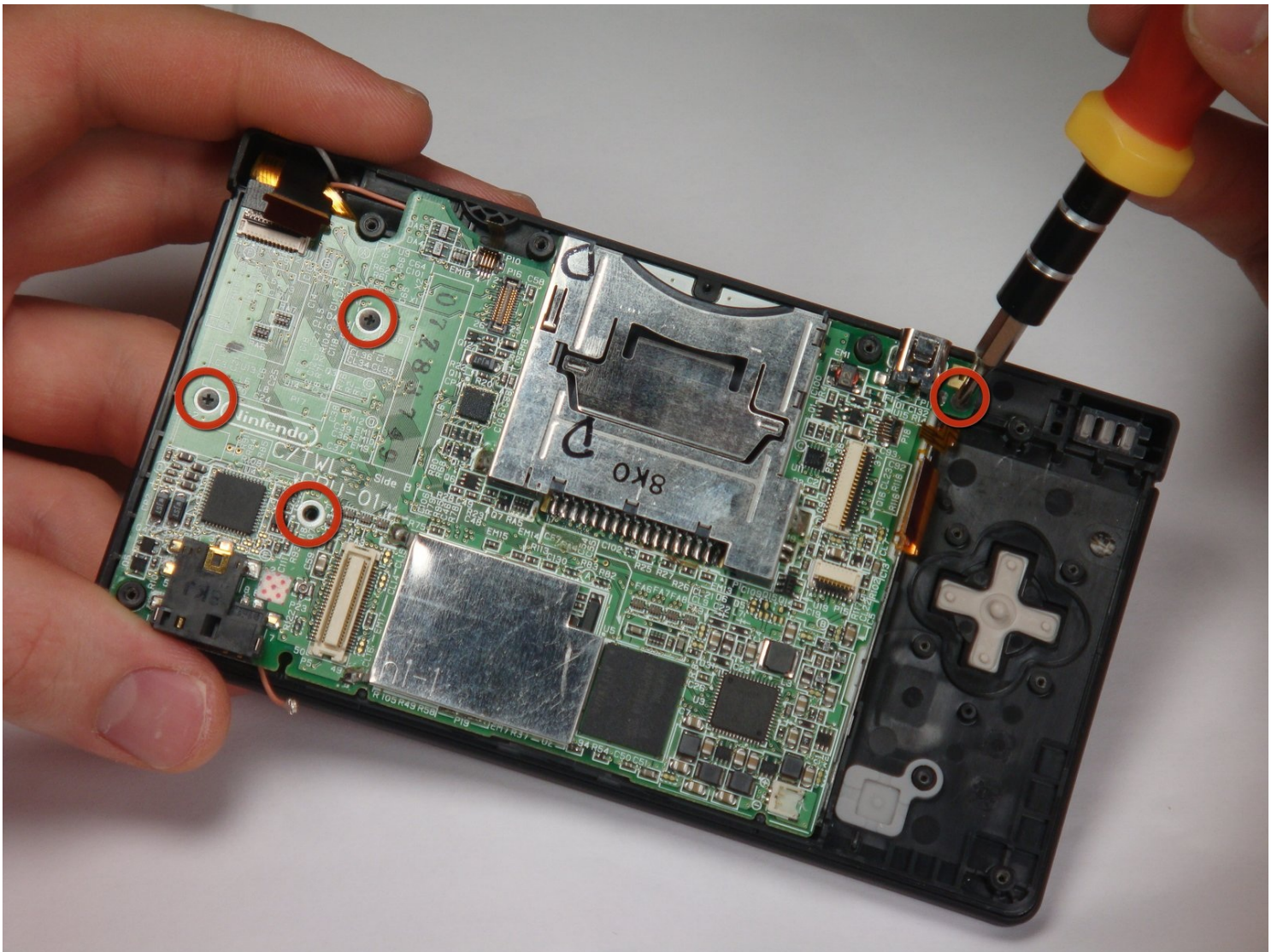


Archived

Nintendo DSi Motherboard Replacement

This guide has been updated by iFixit staff!...

Written By: rwong05



INTRODUCTION

This guide has been updated by iFixit staff! Read the new, official guide [here](#).

A guide on replacing your Nintendo DSi motherboard.



TOOLS:

Metal Spudger (1)
Phillips #00 Screwdriver (1)
iFixit Opening Tool (1)
Spudger (1)
Tweezers (1)



PARTS:

Nintendo DSi Motherboard (1)

Step 1 — Battery



- Loosen the two screws on the battery panel. Then lift the panel up to remove it.

Step 2



- L Button.
- Top of the battery pack.
- To remove the battery pack, place your fingernail or a spudger at the top of the battery near the L button. Gently lift the battery out.

Step 3 — Lower Case Assembly



- Two screws are hidden underneath two rubber feet highlighted in red.
- Use the tip of a spudger to pry the rubber feet out of the lower case.
- ① Depending on the age of your device, the rubber feet may crumble apart as you pry them out. If so, use a fine-tipped tool to scrape out any stuck pieces of rubber.

Step 4



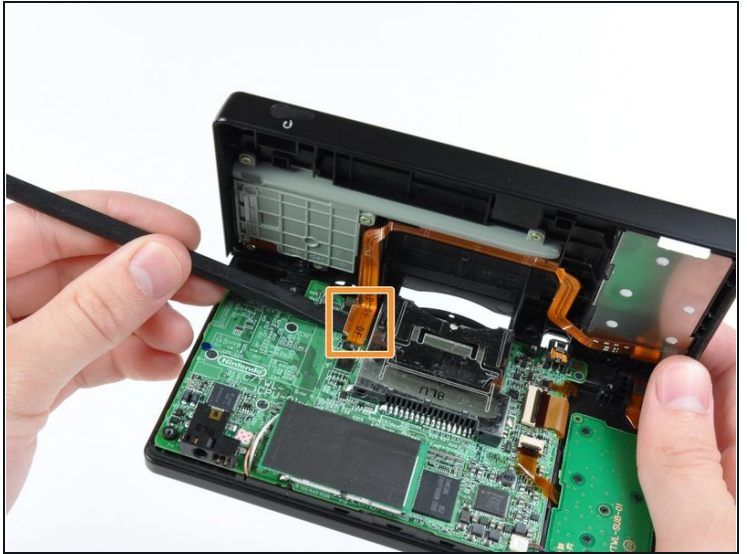
- Remove the following screws securing the lower case to the body of the DSi:
 - Six 5.2 mm Phillips #00 screws.
 - One 2.7 mm Phillips #00 screw.

Step 5



- Insert the spudger in between the lower casing and lower panel near the top right corner of the DSi.
- Carefully run the spudger along the edge of the outer casing, creating an opening between the body and the casing.
- Continue running the spudger around the body of the DSi until the majority of the lower case has been separated.

Step 6



- Carefully lift the lower casing from its bottom edge.

⚠ The lower case is still attached to the motherboard by the volume and SD board cable highlighted in red. Do not try to completely remove the lower case of the DSi yet.

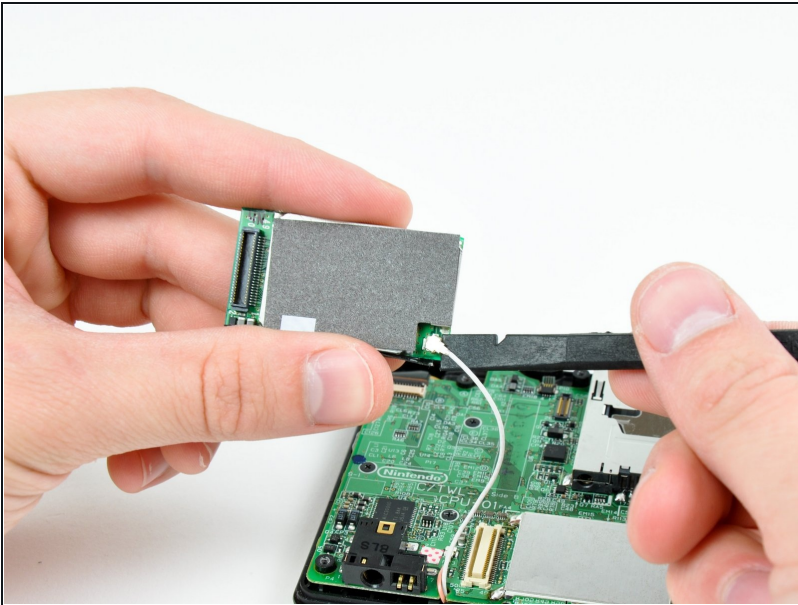
- Pry the volume and SD board cable up from its socket on the motherboard using a spudger.
- Once the cable is completely removed, then you may take off the entire outer casing.

Step 7 — Wi-Fi Board



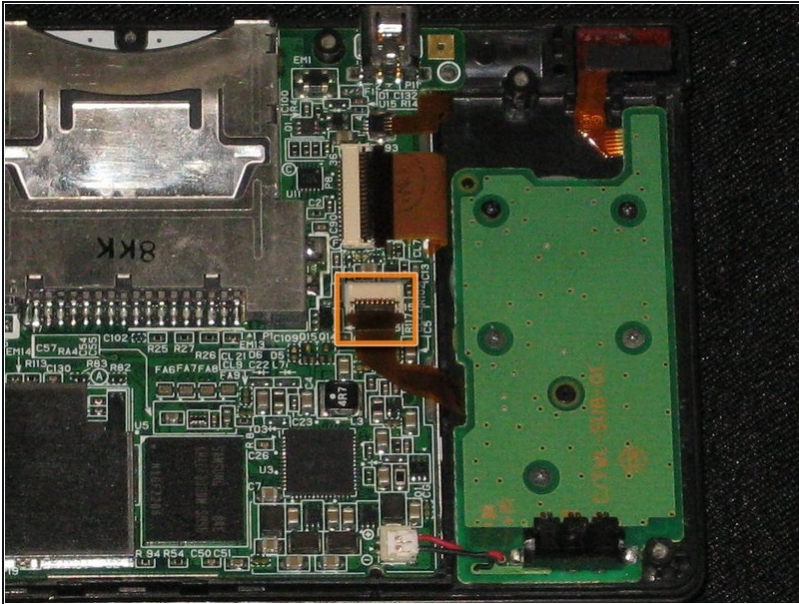
- Pull the Wi-Fi board away from the motherboard by its edge closest to the headphone jack.

Step 8



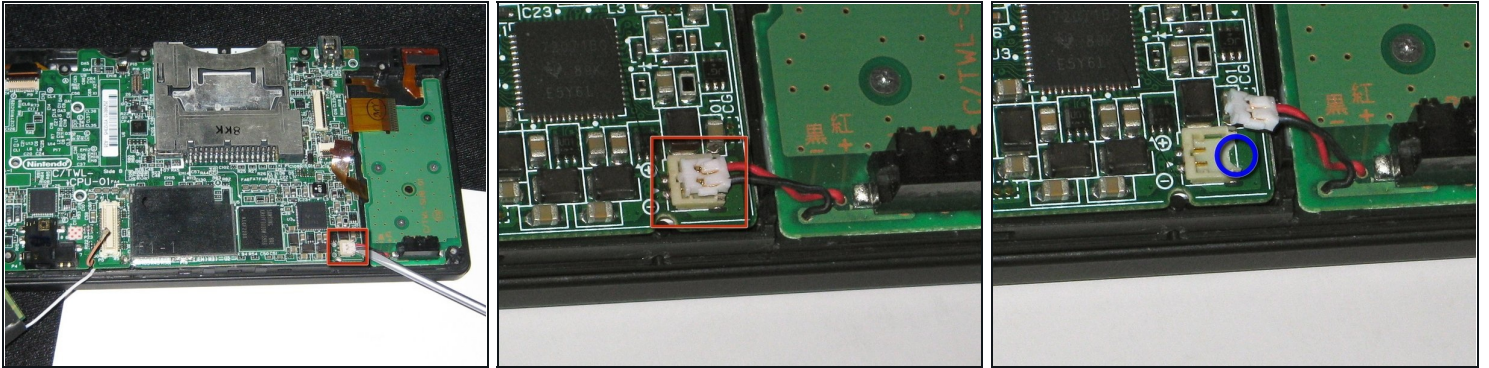
- Pry the Wi-Fi antenna connector straight up from its socket on the Wi-Fi board.

Step 9 — Disconnecting Nintendo DSi Battery Board



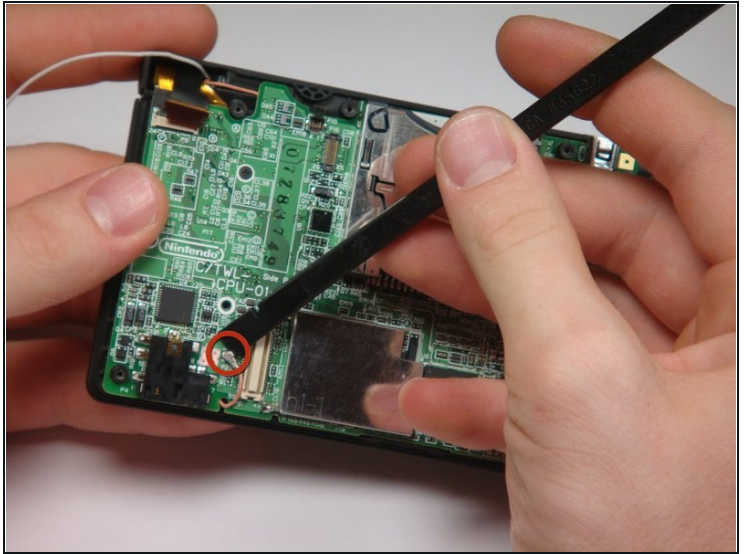
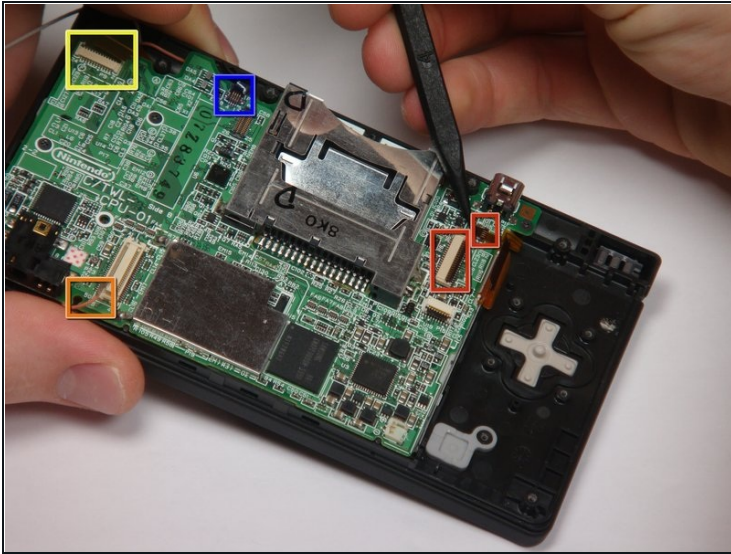
- Flip up the black latch and disconnect the D-Pad/Power Button ribbon cable.

Step 10



- ⚠ The power connector (with red and black wires) is difficult to remove without damaging it, unless you take a moment and understand how it works. Look at all of the photos for this step before continuing.
- The connector is two pieces -- a white "male" piece (connected to the wires), and a beige "female" part (soldered to the main board).
 - There is a small "notch" in the female part, to give you a place to insert a small flat-head screwdriver. Put the corner of your screwdriver in there, and twist it gently to push the white part up (away from the main board). Do not try to pull it to the right (towards the battery board).
- ⓘ If it does not lift easily, try again with a smaller screwdriver. You might be pulling the female connector off the board, which will be difficult to repair.

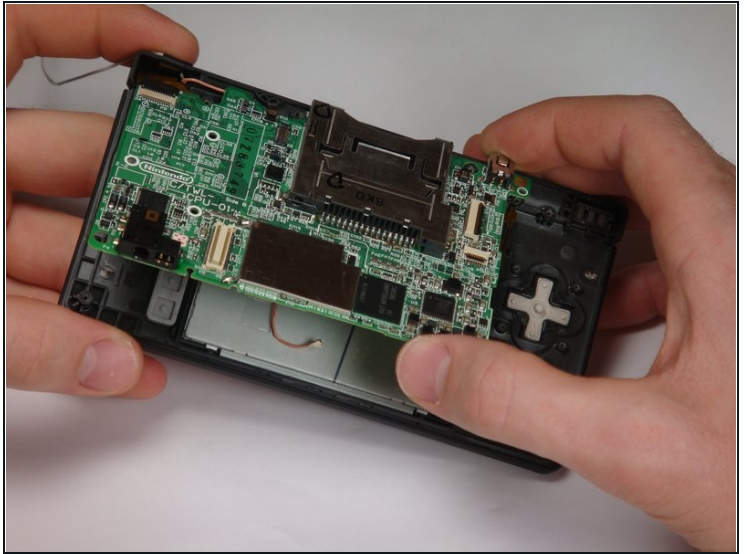
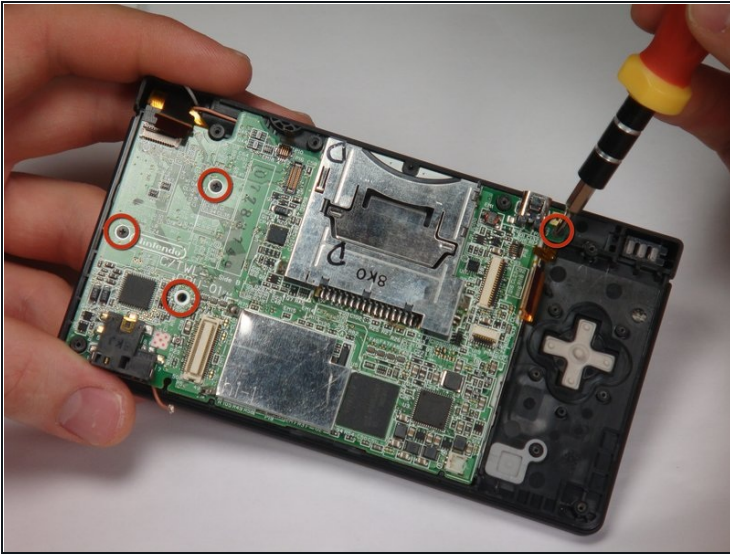
Step 11 — Disconnecting (Top) Nintendo DSi Motherboard cables



- If you have not already done so, disconnect the two bottom-LCD ribbon cables from the main board by prying up the black latches and pulling the cable out to the side.
- The ribbon cable (marked in blue) for the touch screen is particularly thin and fragile; be careful to avoid bending it more than necessary.
- Flip up the latch and remove the touch screen cable.
- Flip up the latch and remove the top-screen ribbon cable.
- Pry up on the orange cable to disconnect it from the main board, much like the antenna cable on the Wi-Fi module.

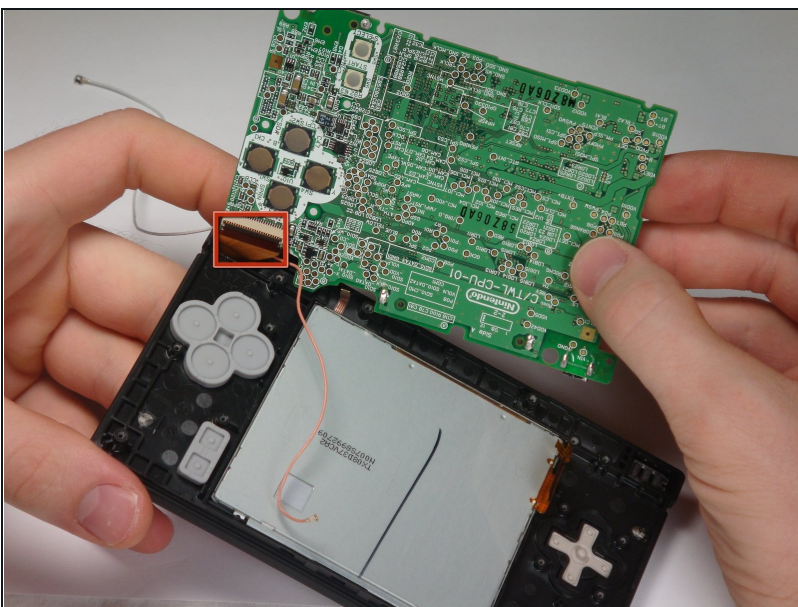
⚠ Do not pull on the orange cable that connects to the bottom of the motherboard.

Step 12 — Motherboard



- Remove 4 Phillips screws from the board.
 - Lift the main board from the bottom end and flip it over to reveal the last connector.
- ⚠ Keep the main board fairly close to the case, making sure not to damage the last ribbon cable holding it in place.

Step 13



- Disconnect the ribbon cable by gently using a plastic opening tool to flip up the black connector latch. The cable should easily slide out from the connector.
- The motherboard should now be free from the rest of the device.

To reassemble your device, follow these instructions in reverse order.