



# AEE Mach 1 Camera Replacement

This guide focuses on removal of the Camera from the AEE Mach 1, under the assumption that one can source a replacement.

Written By: Cameron C Blanchard



---

## INTRODUCTION

This **IFIXIT** guide allows you to safely and properly remove the **CAMERA** from the **AEE Mach 1** Drone. In order to remove the camera, please follow the step-by-step directions below and make sure to use the proper tools listed. When removing the top panel, make sure to be careful as there are still wired connections. Fix it!



### TOOLS:

- [Phillips #00 Screwdriver](#) (1)
  - [T5 Torx Screwdriver](#) (1)
  - [Spudger](#) (1)
-

## Step 1 — Camera



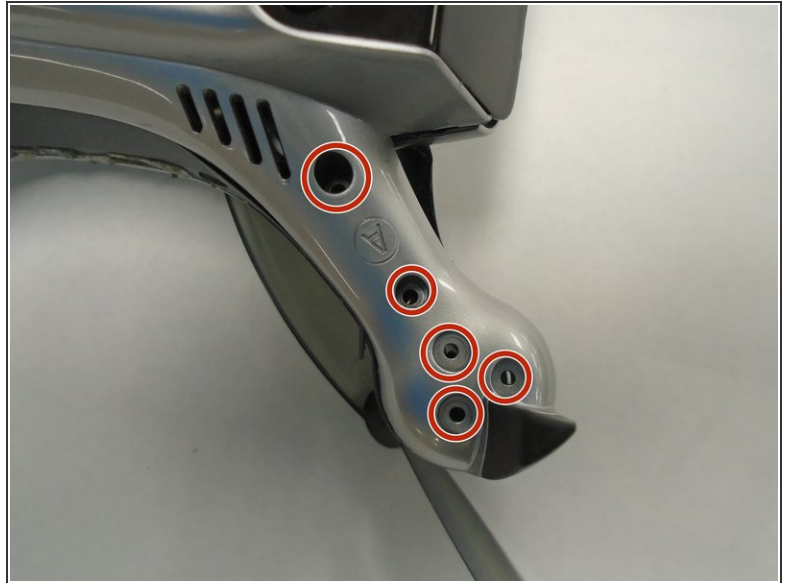
- Take out the AEE Mach 1 and place it on a surface with its propellers facing up.

## Step 2



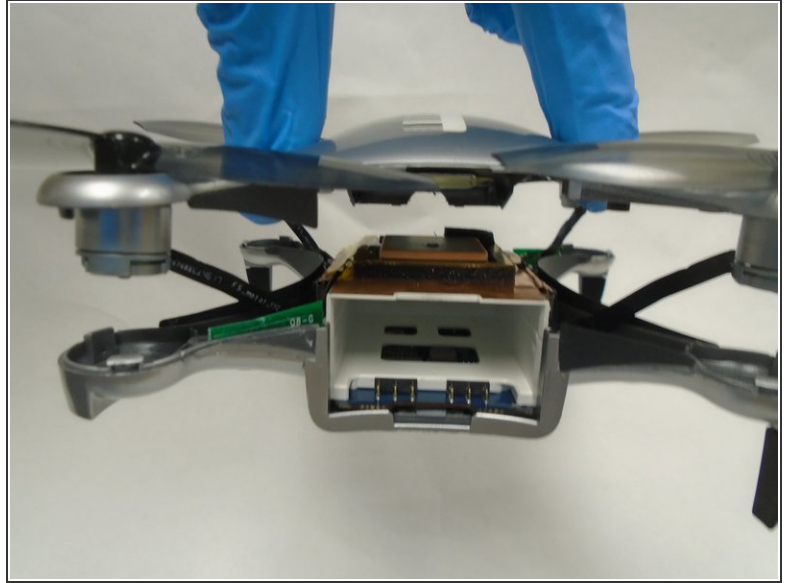
- Holding the base of a propeller with one hand, unscrew the propeller by hand in a clockwise direction. Complete this action on all 4 propellers.

## Step 3



- Flip the AEE Mach 1 upside down.
- Remove the screws on the drone's arms using a Torx T5 screwdriver.

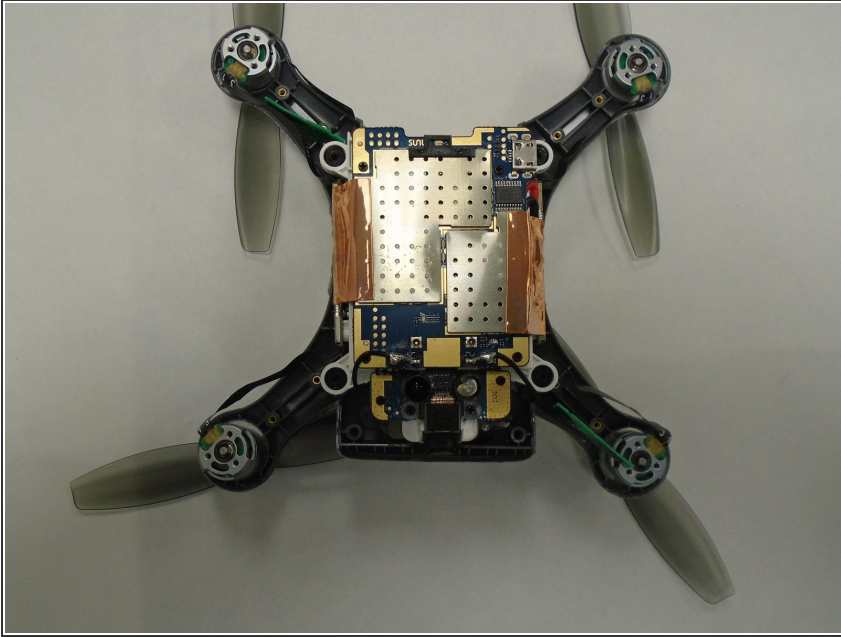
## Step 4



- Gently pry open the top panel of the drone using a spudger.
  - ⓘ Do not completely remove the panel, as there will still be wired connections between the two halves.
- Rotate the top panel slightly to reveal the four screws beneath each propellor arm.
- Remove each of the four screws with a Phillips #0 screwdriver.
- Lift off the top panel, as it should now be free from the rest of the device.

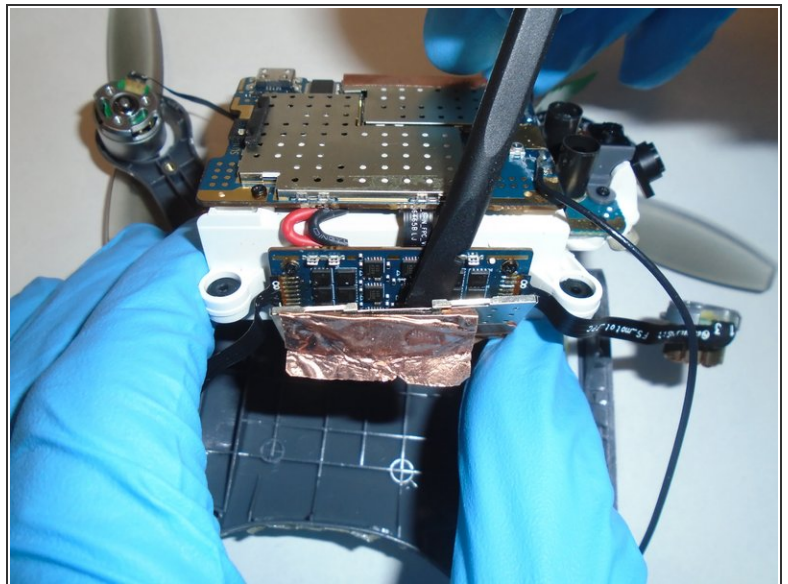
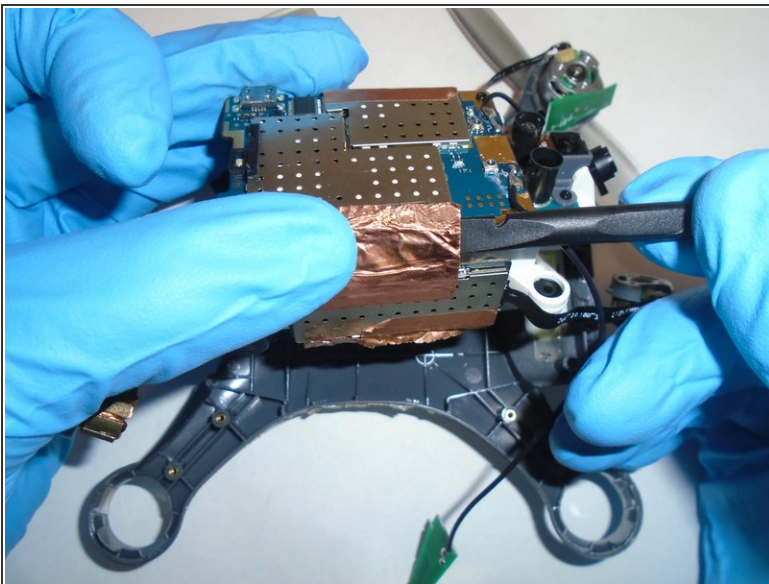


## Step 5



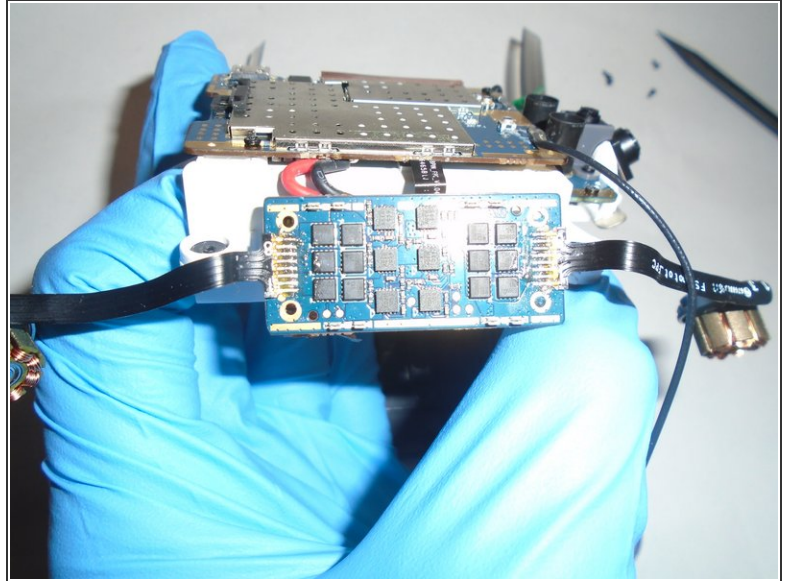
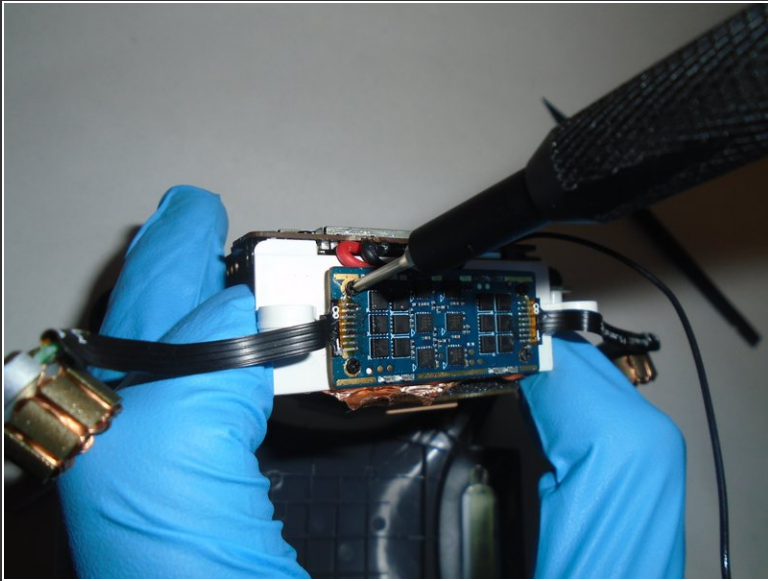
- Using a Phillips #00 screwdriver, remove the screws from the four corners of the inner white chassis.

## Step 6



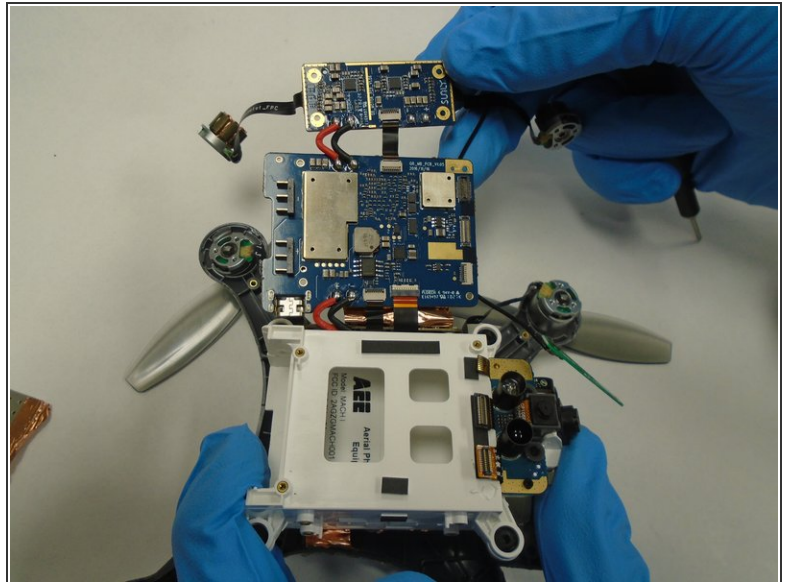
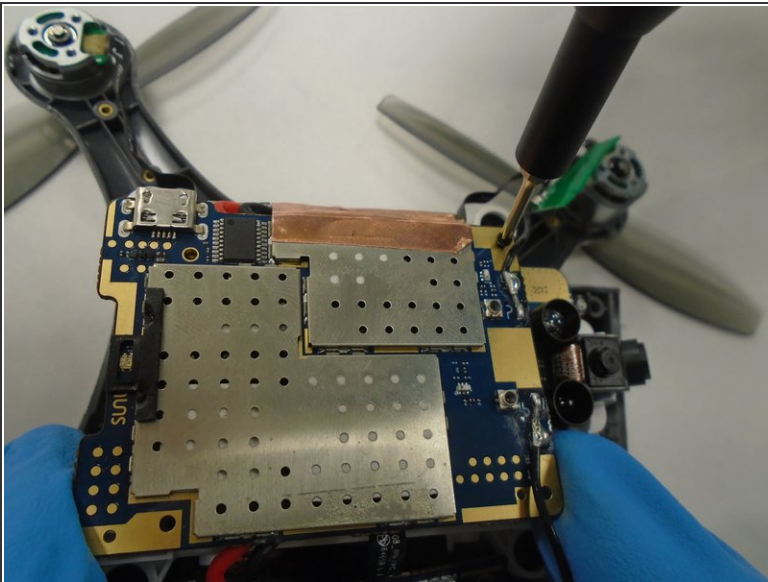
- Using a Spudger (or similar tool to scrap/pry with), remove the copper foil used as tape from the sides of the chassis.
- Remove the small metal covering from the side boards.
  - ⓘ This can be done by hand or with the assistance of a prying tool.

## Step 7



- Using a Phillips #00 screwdriver, remove the four screws separating the side board from the white chassis.

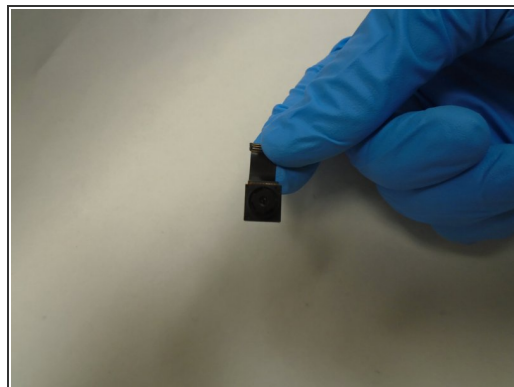
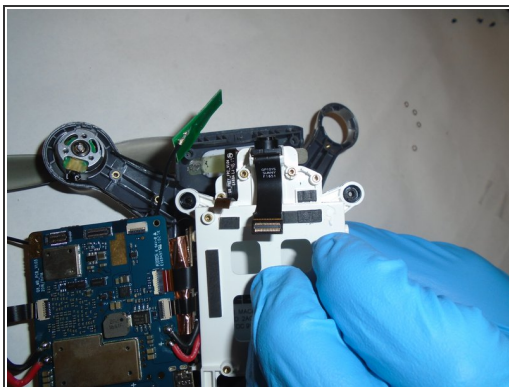
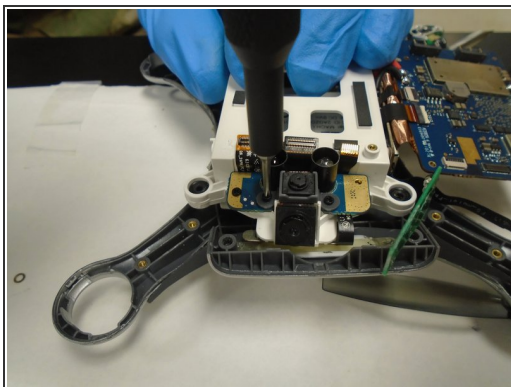
## Step 8



- Using a Phillips #00 screwdriver, remove the four screws from the large motherboard on the white chassis.
- Lift the motherboard out of the case, revealing the camera cable.



## Step 9



- Using the Phillips #00 screwdriver, remove the four screws holding the camera mechanism in place.
- Lift the camera assembly out of the case.

To reassemble your device, follow these instructions in reverse order.