



How to Repair an Unstable Sliding Door

This step-by-step repair guide will show you how to fix a sliding door that has been derailed.

Written By: Barabonye Longjohn



INTRODUCTION

This repair guide's goal is to put forward a set of steps to assist you with your repair of an unstable sliding door.

This guide begins with investigating the problem that causes the instability and cleaning out the tracks of your sliding door. Also, it provides step by step methods on how to put back the rollers on a sliding track.

Finally, the guide gives detailed steps for realigning an unstable door.



TOOLS:

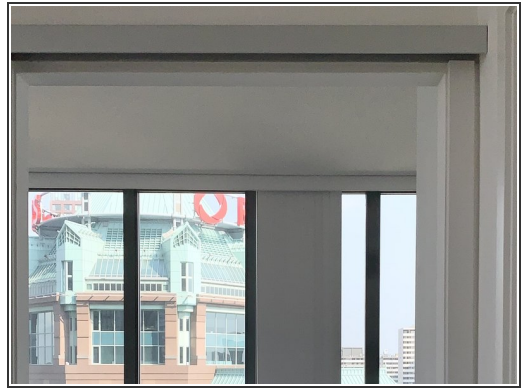
- [Phillips #1 Screwdriver](#) (1)
 - [Isopropyl Alcohol 70%](#) (1)
 - [Shop Towels or Rags](#) (1)
-

Step 1 — How to Repair an Unstable Sliding Door



- Investigate the cause of the unstable sliding door.
 - ❗ In this case you can see the sliding track isn't aligned with the bottom roller.
 - ❗ You can also see that the screw at the base has been dislodged.

Step 2



- Remove the screws used to hold the door in place with a Phillips screwdriver.
- Once the doors are loose from the tracks, remove them.

Step 3



- Check to see that the rollers are securely in place.
- If there are any bits of debris present on the rollers or the tracks, clean it off with isopropyl alcohol and a clean rag.

Step 4



- Place the doors back on the rollers.
- Replace the screws you removed earlier.
- Check that the rollers move freely. You can test this by using your hands to roll them forward to your satisfaction.

Step 5



- Align the door on both tracks.
 - Start by attaching the head of the door first and then lower body into the track. Avoid forcing into the track as this might damage the rollers.
- ⓘ Make sure that it is aligned properly so it does not fall out in the future.