



Samsung Galaxy M31 Back Cover & Fingerprint Sensor Replacement

How to remove the back cover and the fingerprint sensor on your Samsung Galaxy M31.

Written By: Dominik Schnabelrauch



INTRODUCTION

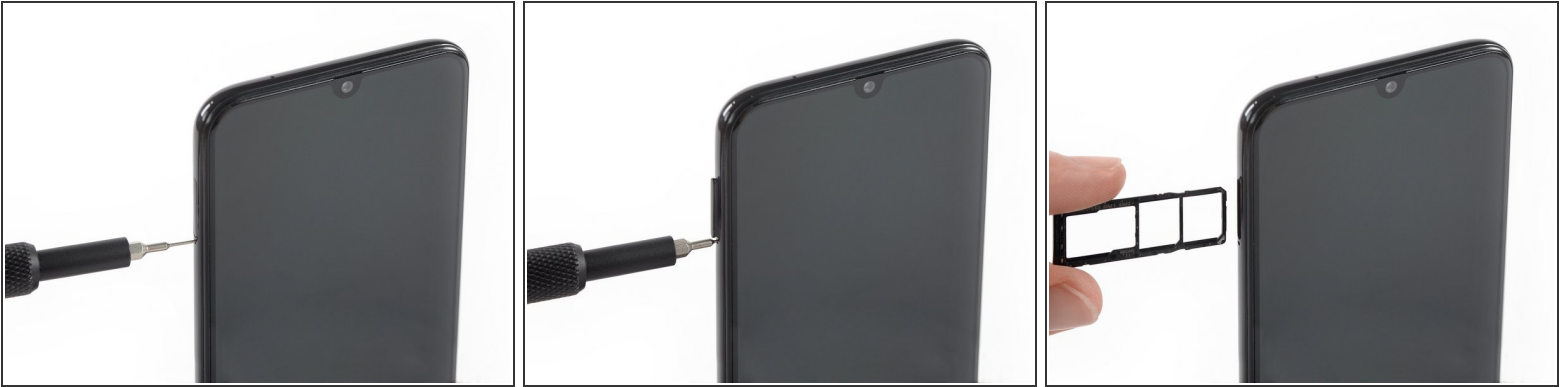
Use this guide to remove the back cover and the fingerprint sensor on your Samsung Galaxy M31.

You'll need replacement adhesive to reattach the fingerprint sensor when reassembling the device.

TOOLS:

- [SIM Card Eject Tool](#) (1)
 - [iFixit Opening Picks set of 6](#) (1)
 - [iOpener](#) (1)
 - [ESD Safe Tweezers Blunt Nose](#) (1)
-

Step 1 — Remove SIM Card Tray



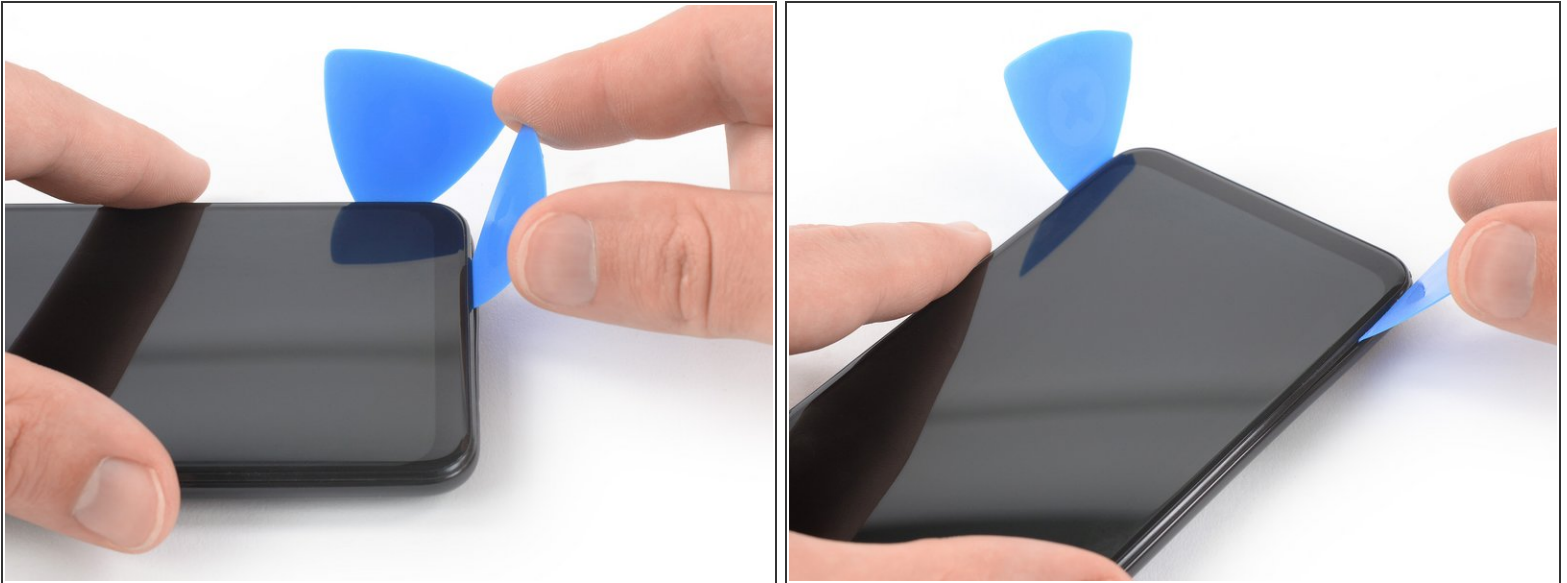
- Insert a SIM card eject tool, a SIM eject bit or a straightened paper clip into the hole on the SIM tray located at the left side of the phone.
- Press firmly to eject the tray.

Step 2



- Insert an opening pick between the phone assembly and the back cover at the bottom edge of the phone.
- Slide the opening pick around the bottom right corner to release the clips holding the back cover in place.

Step 3



- Insert a second opening pick between back cover and the phone assembly at the bottom edge of the phone.
- Slide the opening pick around the bottom left corner to release the plastic clips holding the back cover in place.

Step 4



- Slide the opening pick along the left side of the phone to release the plastic clips on the left side of the back cover.


Step 5




- Slide the opening pick along the right side of the phone to release the plastic clips on the right side of the back cover.

Step 6 — Remove Back Cover



 The flex cable of the fingerprint sensor is very short and the sensor is likely to disconnect itself during the following removal procedure. Avoid damaging the cable by removing the back cover too quickly.

- Carefully lift the phone assembly out of the back cover.
-  During reassembly, this is a good point to power on your phone and test all functions before reinstalling the back cover. Be sure to power your phone back down completely before you continue working.

Step 7 — Soften Fingerprint Adhesive



- Apply a [heated iOpener](#) to the back of the phone where the fingerprint sensor is located to loosen the adhesive underneath. Apply the iOpener for at least two minutes.

Step 8



- Slide an opening pick underneath the edge of the fingerprint reader.
- Slide the opening pick around the edge of the fingerprint reader to cut the adhesive underneath.

Step 9 — Remove Fingerprint Sensor



- Remove the fingerprint reader.

To reassemble your device, follow these instructions in reverse order. Apply new adhesive where necessary after cleaning the relevant areas with isopropyl alcohol (>90%).

Secure the fingerprint sensor with pre-cut adhesive or double-sided adhesive tape during reassembly.

Removal didn't go as planned? Try some [basic troubleshooting](#), or ask our [Answers community](#) for help.