



# BlackBerry 7280 Keypad Replacement

This guide will walk through how to install a replacement keypad for a BlackBerry 7280.

Written By: Andrew Johnston



---

## INTRODUCTION

The keypad is the external part of the keyboard consisting of the rubber buttons. This keypad rests in the front case.



### TOOLS:

- [T6 Torx Screwdriver](#) (1)
  - [iFixit Opening Tools](#) (1)
-

## Step 1 — Battery



- With your thumb press down on the locking- button on the back of the BlackBerry 7280.
- Slide the battery cover off the device.

## Step 2



- Remove the lithium-ion battery from the back of the device using your index finger.

### Step 3 — SIM Card



- Hold the device with both hands.
- Lift the SIM card holder using your thumb and index finger.
- Remove the SIM card from the device.

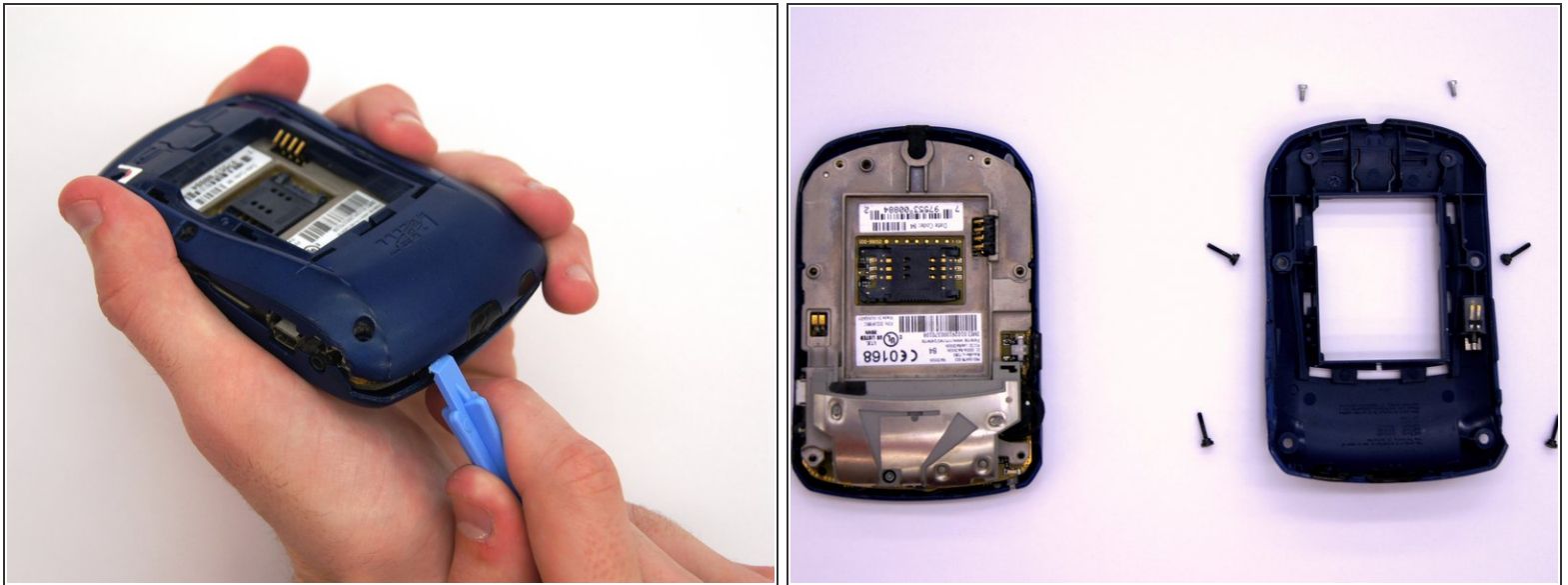
### Step 4 — Back Case



- Using a Torx T6 screwdriver, remove all six 1/8 inch screws (marked in red) from the back case. Set screws aside.
- ⓘ The SIM card has been removed here to prevent damage to the card. This is recommended, but not not required.



## Step 5



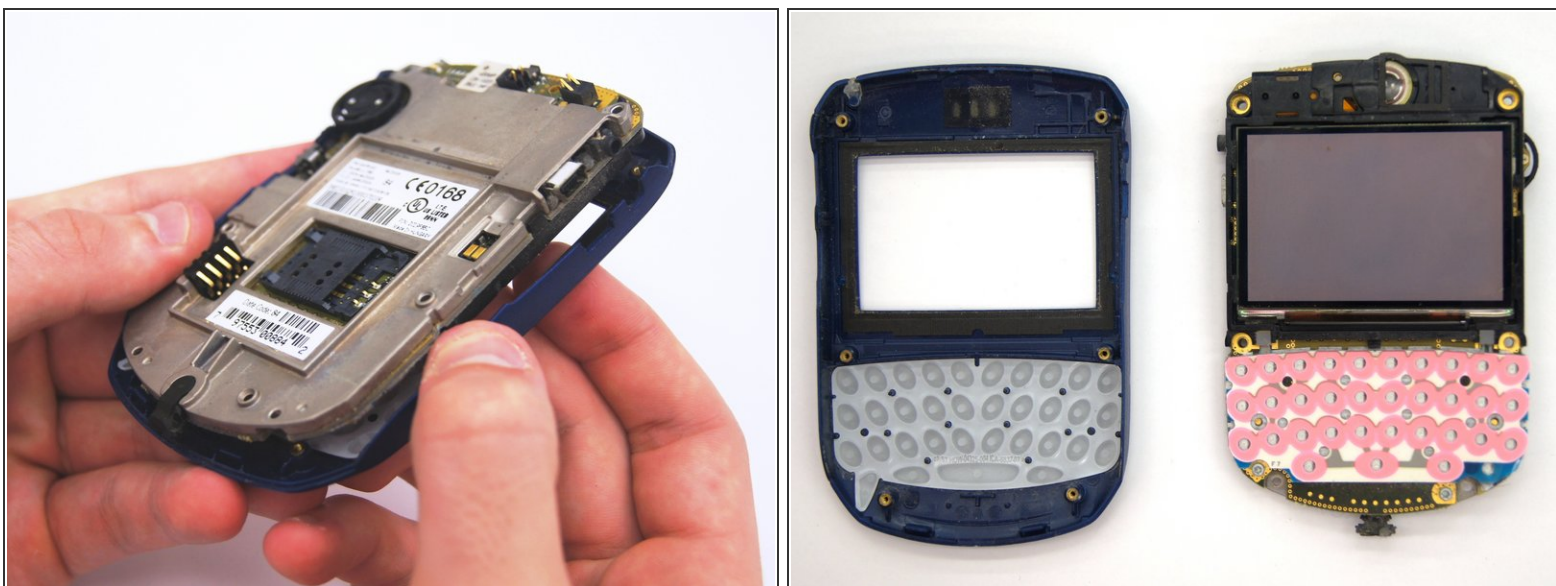
- Use the plastic opening tool to pry the back case away from the front case.

## Step 6 — Front Case



- Using a Torx T6 screwdriver, remove the lone 1/8 inch screw that holds the upper metal bracket onto the larger metal bracket. Set aside the screw and the bracket.

## Step 7



- Remove the front plastic case from the metal bracket.

## Step 8 — Keypad



- The keypad sits in the keyboard slots on the front cover. Simply peel the keyboard off and replace.

To reassemble your device, follow these instructions in reverse order.