



Samsung Galaxy A51 Battery Replacement

Use this guide to replace a worn-out or dead...

Written By: Adriana Zwink



INTRODUCTION

Use this guide to replace a worn-out or dead battery in your Galaxy A51.

If your battery is swollen, [take appropriate precautions](#). For your safety, **discharge your battery below 25%** before disassembling your phone. This reduces the risk of a dangerous thermal event if the battery is accidentally damaged during the repair.

You'll need replacement adhesive to reattach components when reassembling the device.

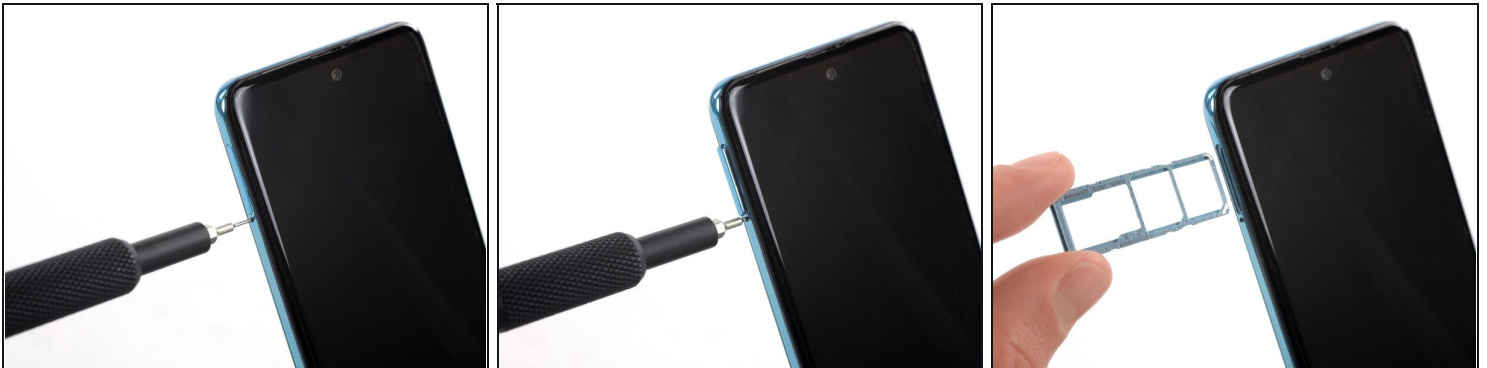
🔧 TOOLS:

[Phillips #00 Screwdriver](#) (1)
[SIM Card Eject Tool](#) (1)
[iOpener](#) (1)
[iFixit Opening Picks \(Set of 6\)](#) (1)
[Suction Handle](#) (1)
[Spudger](#) (1)
[Plastic Cards](#) (1)

⚙️ PARTS:

[Galaxy A51 Battery](#) (1)

Step 1 — Samsung Galaxy A51 SIM Tray Removal



- Insert a SIM card eject tool, a SIM eject bit or a straightened paper clip **into the hole on the SIM tray** located at the left side of the phone.
 - Press firmly to eject the tray.
 - Remove the SIM card tray.
- ⓘ When reinserting the cards, make sure to properly orient them in the tray.

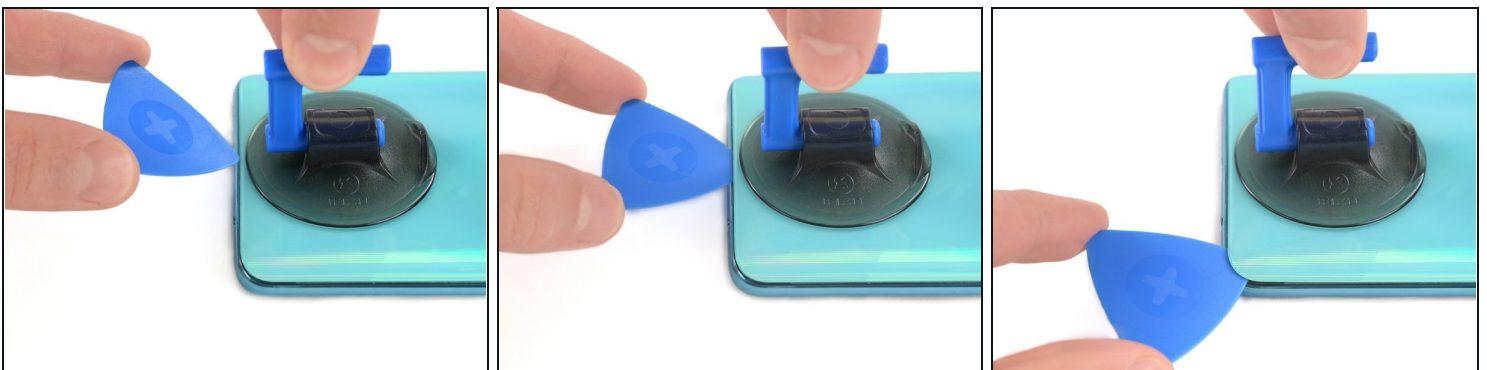
Step 2 — Back Cover



- ⓘ Before beginning this procedure, completely power off your phone.
- Prepare an [iOpener](#) and apply it to the back cover to soften the adhesive.
- ⓘ The adhesive of the Samsung Galaxy A51 is very strong. You can use a hair dryer or a heat gun if you aren't able to open the device with the iOpener.

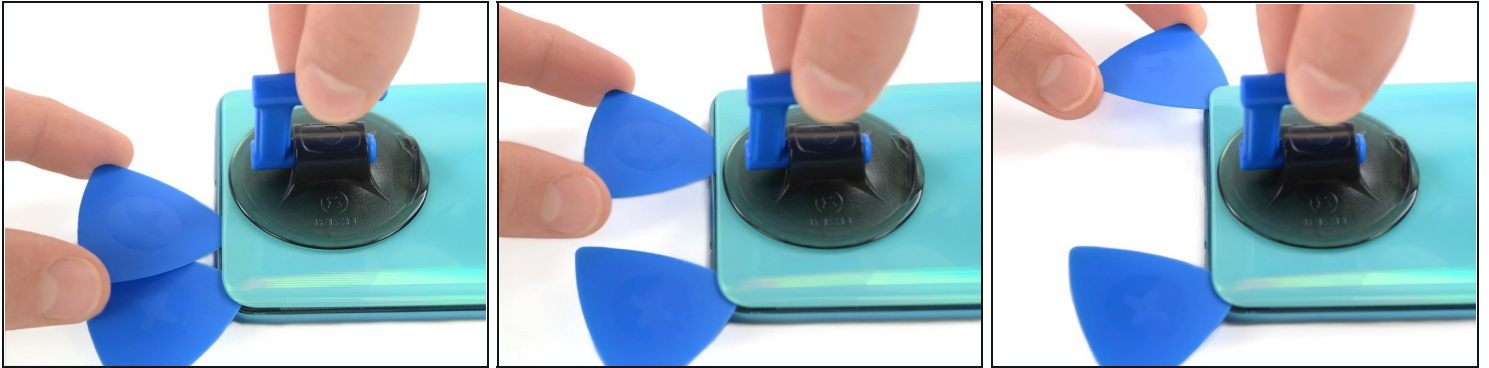
⚠ Be careful not to overheat the phone—the AMOLED display and internal battery are both susceptible to heat damage.

Step 3



- Insert the tip of an opening pick between the frame and the back cover at the bottom of the phone near the USB-C port.
- If you can't get between the back cover and midframe with your opening pick, you can use a suction handle or [strong tape](#) to pull up the back cover to create a gap.
- Slide the opening pick to the bottom right corner and leave it there.

Step 4



- Insert a second opening pick and slide it from the bottom right corner to the bottom left corner to cut the adhesive.
- Leave the opening picks in place to prevent the adhesive from resealing.

Step 5



- Insert a third opening pick under the bottom left corner of the back cover.
 - ① If you have any trouble, apply more heat to further soften the adhesive. Follow the iOpener instructions to avoid overheating.
- Slide the opening pick along the left edge of the phone.
- Leave the opening pick in the top left corner to prevent the adhesive from resealing.

Step 6



- Insert a fourth opening pick under the top left corner of the back cover near the camera.
- Slide the tip of the opening pick along the top edge of the phone to the right corner to cut the adhesive.
- Leave the opening pick in the top right corner to prevent the adhesive from resealing.

Step 7



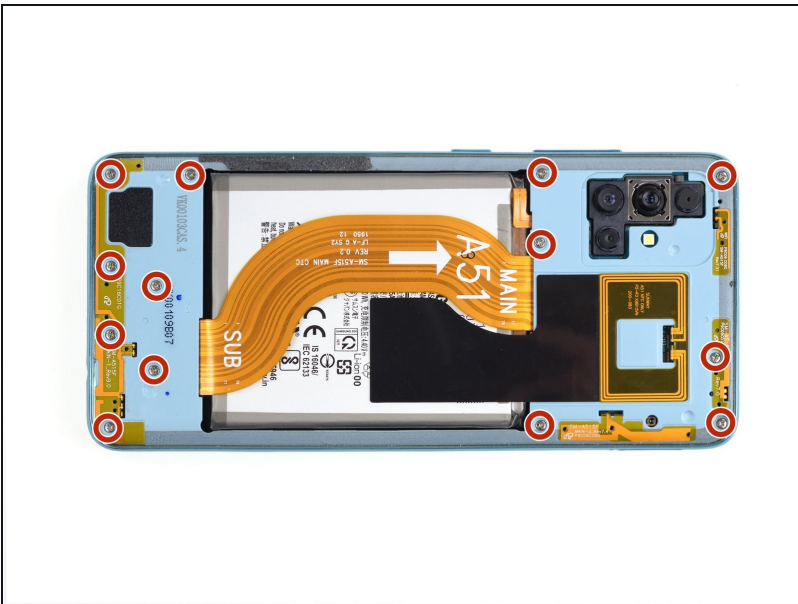
- With opening picks in all four corners, insert a fifth and final opening pick under the top right corner of the back cover.
- Slide the tip of the opening pick along the right edge of the phone to the bottom right corner to cut the remaining adhesive.

Step 8



- Remove the back cover.
- ★ After installing the back cover, apply strong, steady pressure to your phone for several minutes to help the adhesive form a good bond—a stack of heavy books works well.

Step 9 — Midframe



- Remove the thirteen 3 mm Phillips #00 screws securing the midframe.

Step 10



① The midframe is held in place by plastic clips.

- Insert an opening pick between the midframe and front panel assembly on the bottom of the phone near the charge port.
- Slide the opening pick to the left bottom corner to release the plastic clips.
- Slide the opening pick to the bottom right corner to release the rest of the bottom plastic clips.

Step 11



- Continue sliding the opening pick on the right side of your phone until all plastic clips on the right side are released.

Step 12



- Slide the opening pick along the top edge to release the top plastic clips.

Step 13



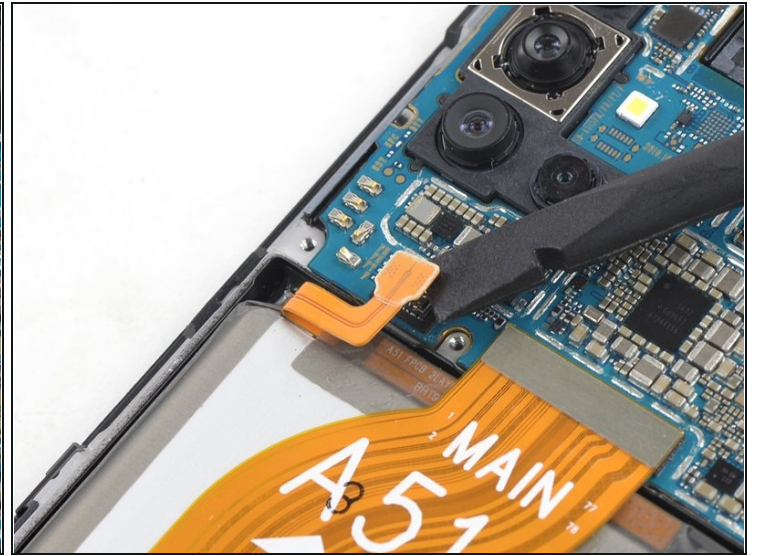
- Slide the opening pick from the top left corner to the bottom left corner to release the left side's plastic clips.

Step 14



- Remove the midframe.

Step 15 — Battery Disconnect



- Use the flat end of a spudger to disconnect the battery by prying the connector straight up from its socket.

Step 16 — Battery



- Use the flat end of a spudger to pry up and disconnect the interconnect cable from the motherboard.

Step 17



- Use the flat end of a spudger to pry up and disconnect the interconnect cable from the daughterboard.
- Remove the interconnect cable.

Step 18



- Apply an [iOpener](#) for 2-3 minutes to the battery to loosen the adhesive beneath the battery. Apply the iOpener for 2-3 minutes.
- ① You may need to repeat this procedure several times during the battery removal.

Step 19



⚠ Try your best not to deform the battery during this process. Soft-shell lithium-ion batteries can leak dangerous chemicals, catch fire, or even explode if damaged. Do not use excessive force or pry at the battery with metal tools.

- Insert a [plastic card](#) underneath the bottom edge of the battery.
- Carefully slide it underneath the battery to loosen the adhesive.

Step 20



- Remove the battery.

⚠ Do not reinstall a damaged or deformed battery, as doing so is a potential safety hazard.

If possible, turn on your device and test your repair before installing new adhesive and resealing.

Secure the new battery with pre-cut adhesive or double-sided adhesive tape. In order to position it correctly, apply the new adhesive into the device at the places where the old adhesive was located, not directly onto the battery. Press the new battery firmly into place.

To reassemble your device, follow these instructions in reverse order. Apply new adhesive where necessary after cleaning the relevant areas with isopropyl alcohol (>90%).

For optimal performance, **calibrate your newly installed battery**: Charge it to 100% and keep charging it for at least 2 more hours. Then use your device until it shuts off due to low battery. Finally, charge it uninterrupted to 100%.

Take your e-waste to an [R2 or e-Stewards certified recycler](#).

Repair didn't go as planned? Try some [basic troubleshooting](#), or ask our [Answers community](#) for help.