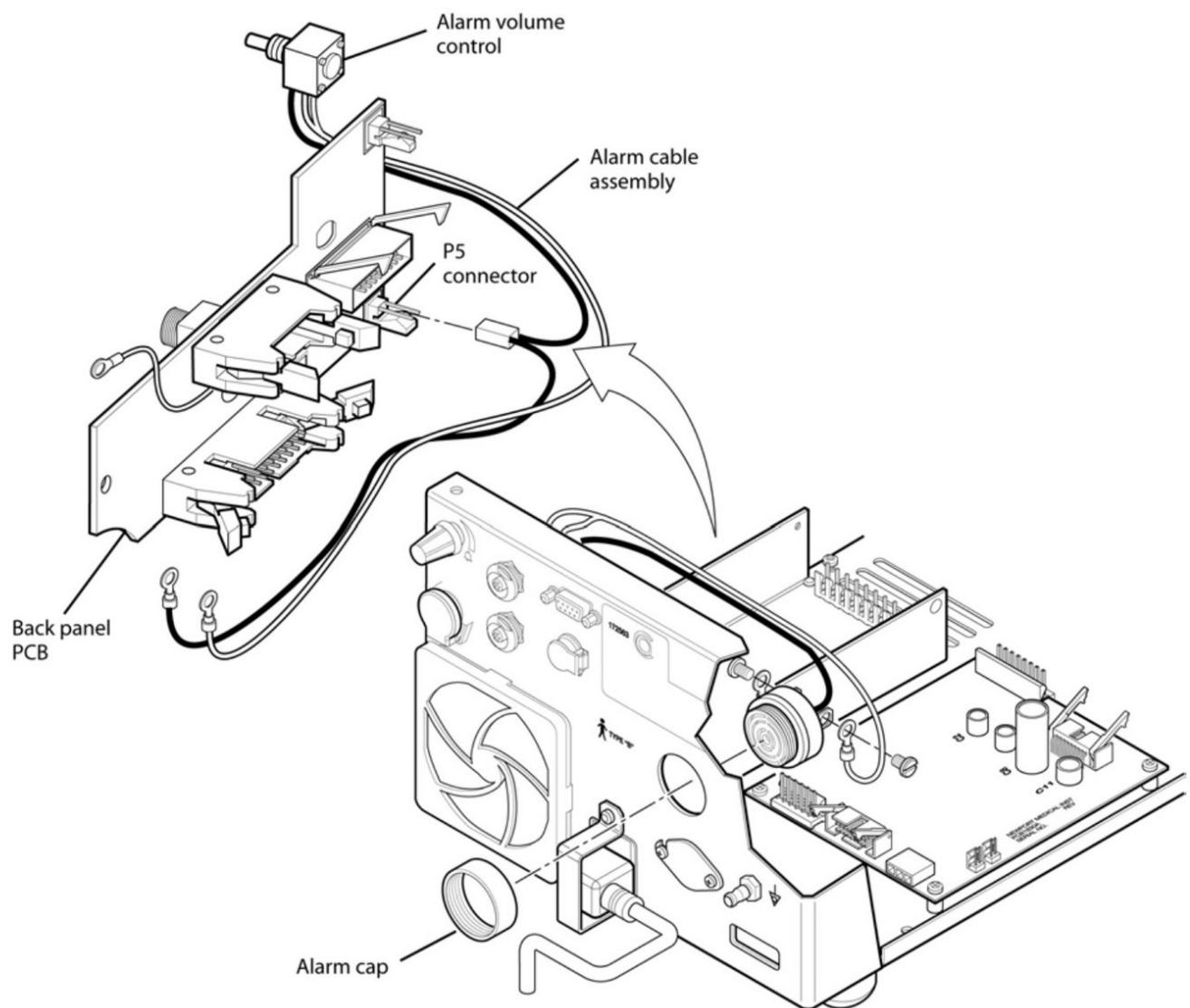




Newport e500 Alarm Speaker Disassembly

How to remove the alarm speaker in the Newport e500 ventilator.

Written By: Jeremy



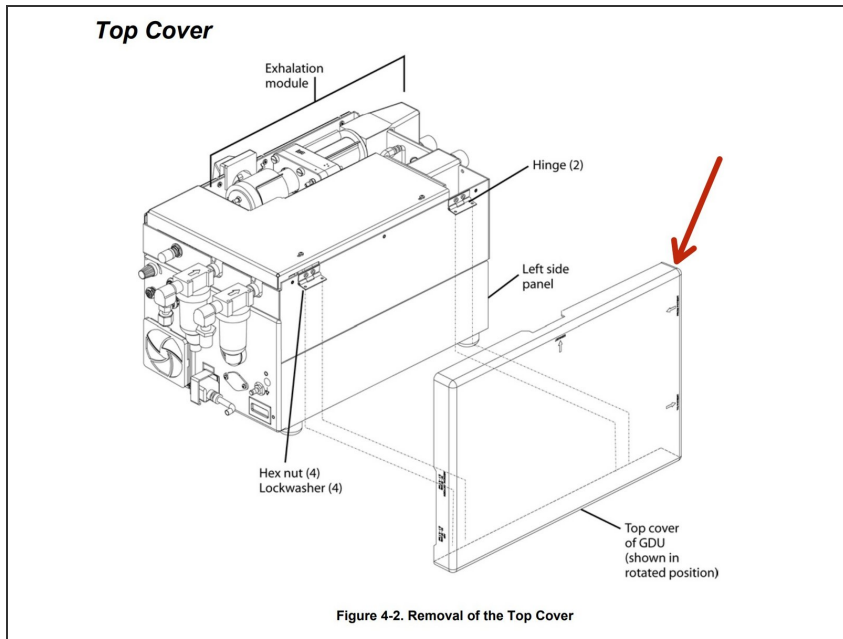
INTRODUCTION

This guide will cover the removal and replacement of the alarm speaker inside the Newport e500. This operation will require a torque wrench and Philips screwdriver. The alarm speaker is located on the back panel. For more information refer to page 79 of the service manual.

TOOLS:

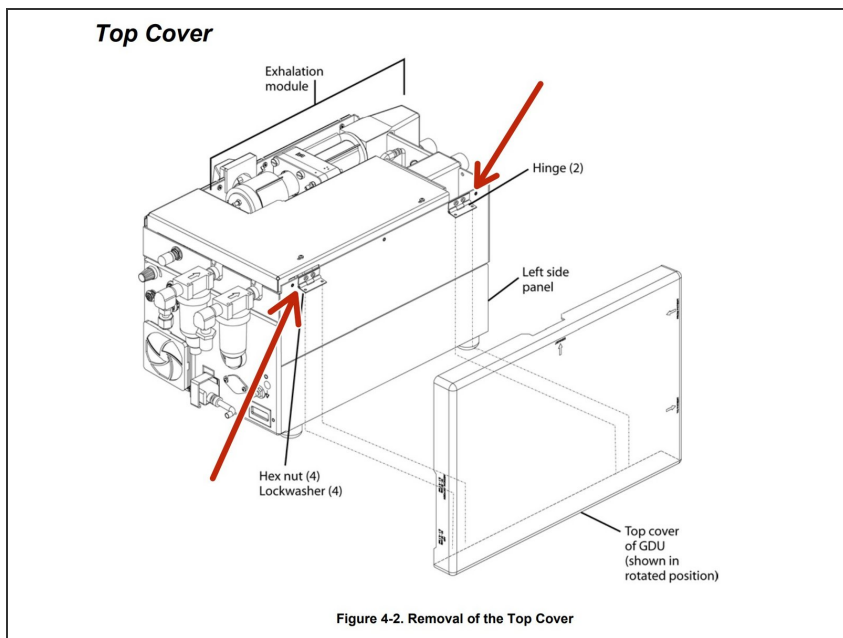
- [Torque Wrench](#) (1)
 - [Phillips #0 Screwdriver](#) (1)
-

Step 1 — Newport e500 Top Cover Disassembly



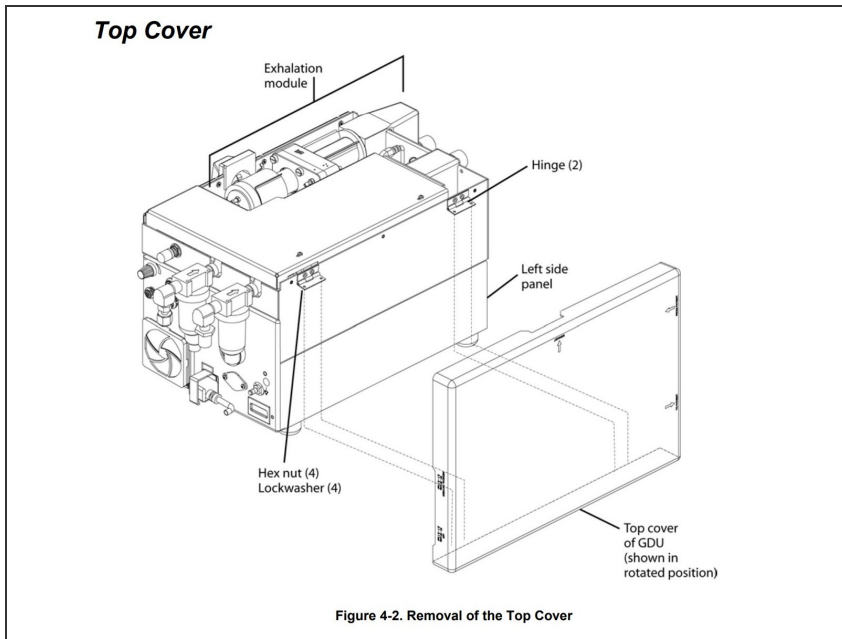
- Place device so that the top cover is facing you.
- Open the top cover.

Step 2



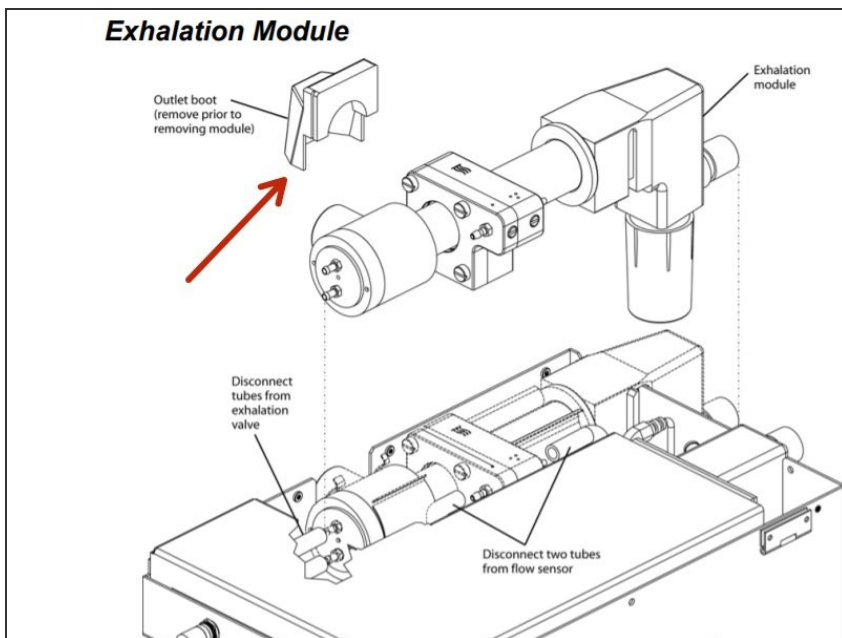
- Remove the four hex nuts and lock washers (two at each hinge) that secure the cover to the hinges on the left side of the pneumatic box.

Step 3



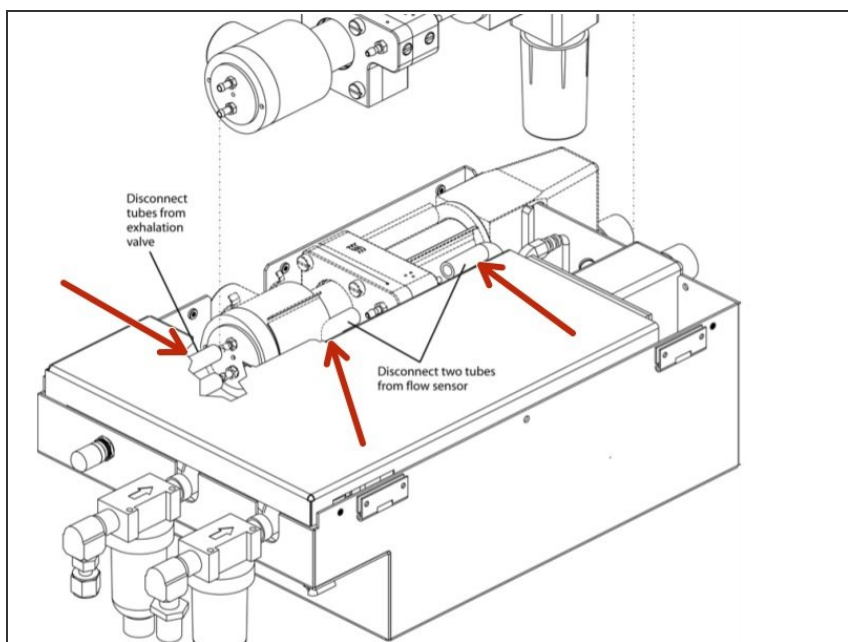
- Remove the cover and set aside. Retain hardware for re-assembly.

Step 4 — Newport e500 Exhalation Module Disassembly



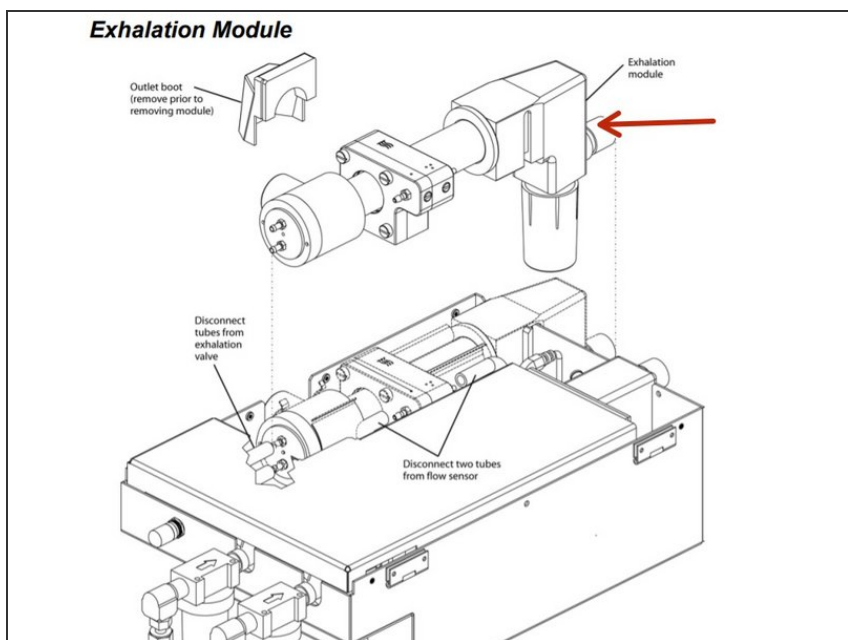
- Pull up and remove the flexible rubber exhalation outlet boot (push fit).

Step 5



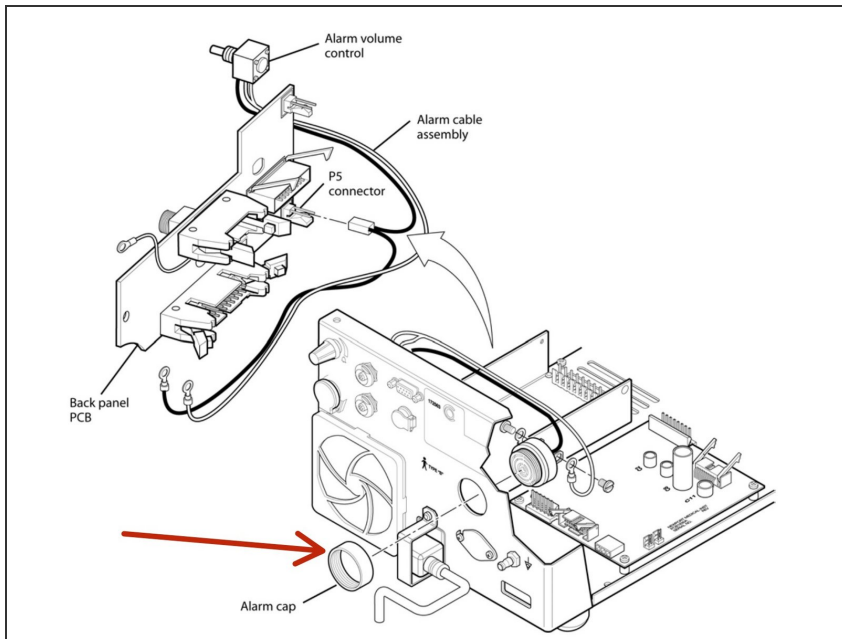
- Disconnect the tubes from both sides of the flow sensor and the two tubes from the exhalation valve.

Step 6



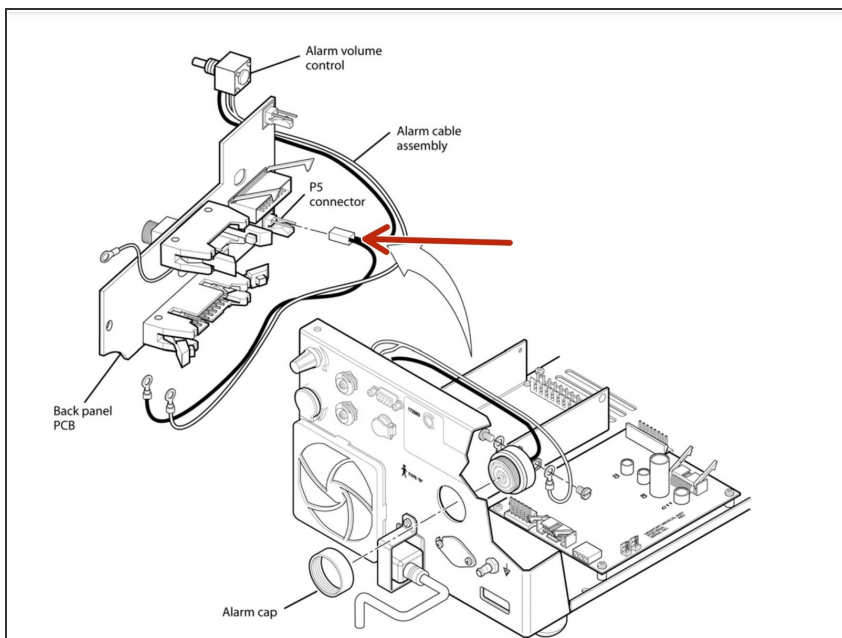
- Pull the exhalation module straight up to remove it from the GDU.

Step 7 — Newport e500 Alarm Speaker Disassembly



- Unscrew the alarm retaining ring from the outside of the back panel; then pull the speaker from the inside of the back panel.

Step 8



- Disconnect the alarm cable assembly from P5 on the back panel PCB.

To reassemble your device, follow these instructions in reverse order.