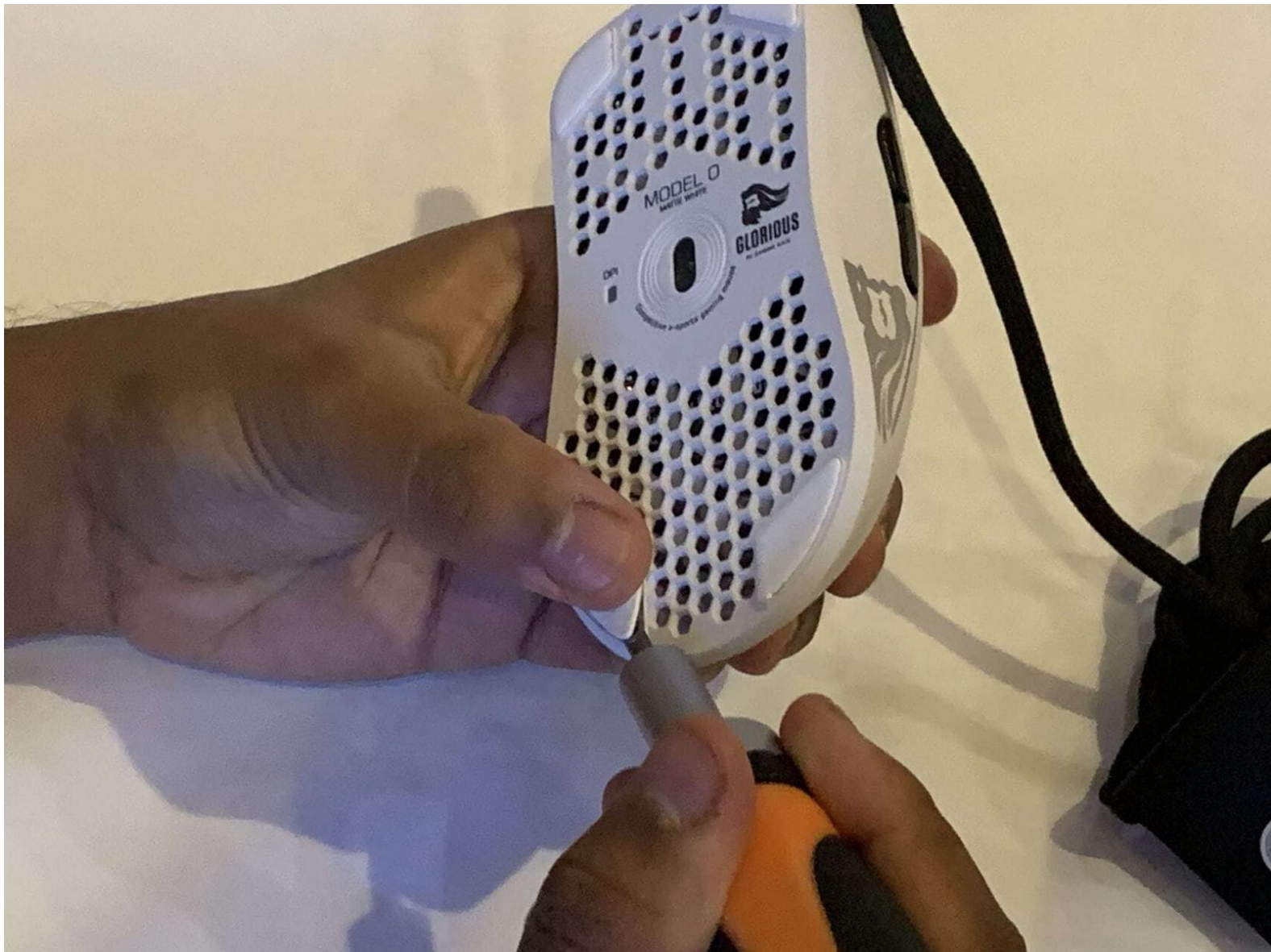




Model O Gaming Mouse USB Type-A Cord Replacement

How to replace a USB Type-A cord in a Model O gaming mouse.

Written By: Nikhil Jaiswal



INTRODUCTION

This guide shows how to replace a USB Type-A cord in a Model O gaming mouse. Replacing the cord of the mouse, whether it's for aesthetic or technical reasons, is much easier to do than it looks. This can be done almost anywhere, with just some screwdrivers and a clean flat surface to work on.



TOOLS:

- [Spudger](#) (1)
- [Phillips #0 Screwdriver](#) (1)



PARTS:

- [replacement mouse cord](#) (1)

Step 1 — USB Type-A Cord



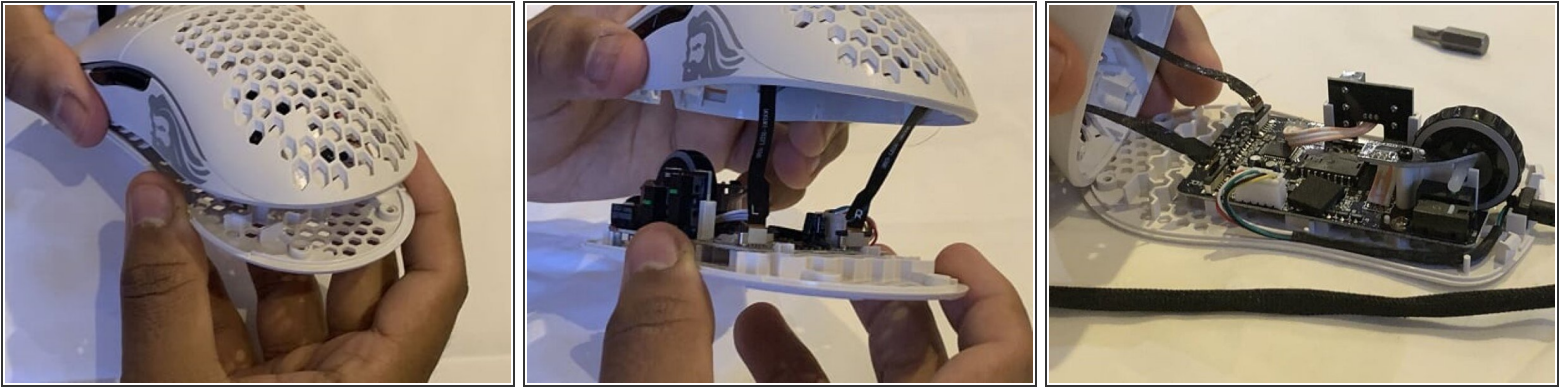
- Hold the mouse so that the sensor on the bottom is facing you.
- Using a spudger, remove the two large skates towards the bottom of the mouse.
- ☑ If you wish to reuse the same mouse skates, keep the adhesive side of the skate facing up and on the side.

Step 2



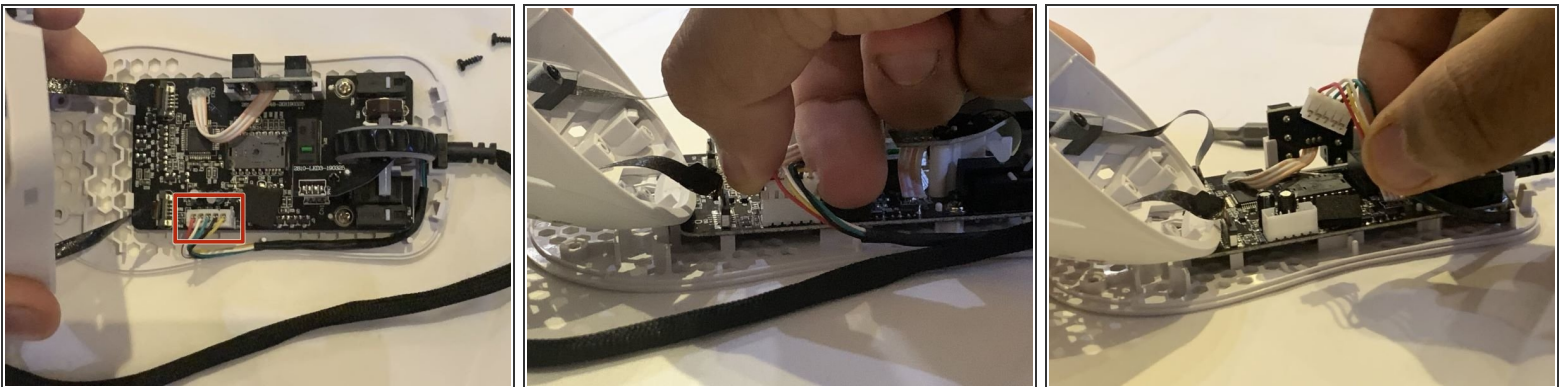
- Using a Phillips #0 screwdriver, remove two screws from the mouse.
- ⓘ When the second screw begins to loosen, the housings will begin to separate. Hold the two housings together until both screws are successfully removed.

Step 3



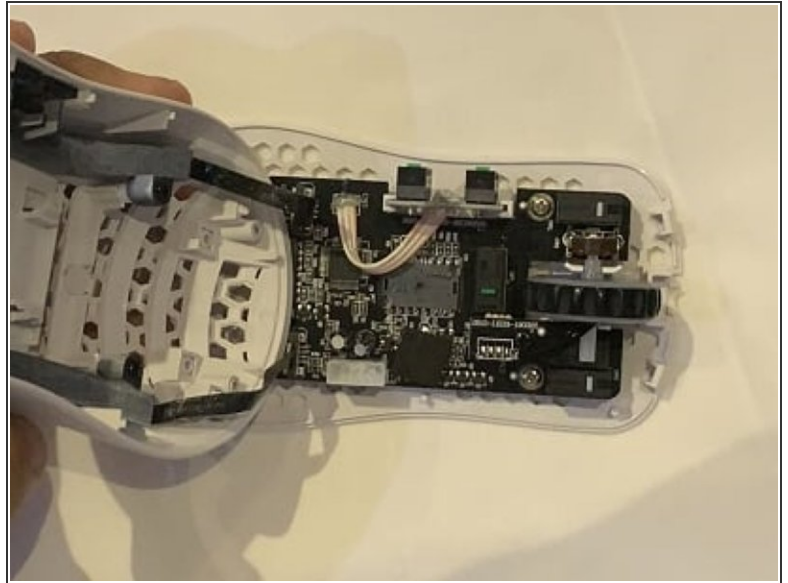
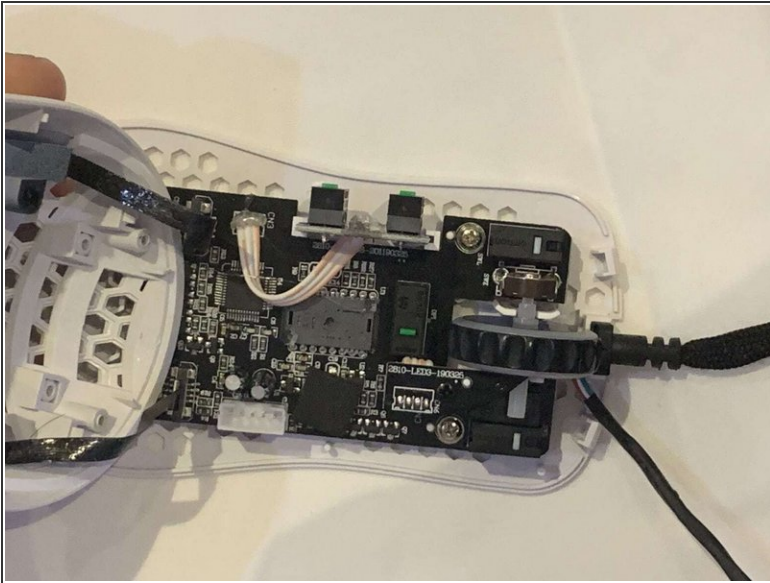
- Place the mouse on a flat surface, and begin to gently lift the upper housing.
- Two RGB ribbon cables still connect the two housings together, and the housings will not separate completely from each other.
- Lift the upper housing so that it is vertically standing, while the bottom housing rests on the flat surface.

Step 4



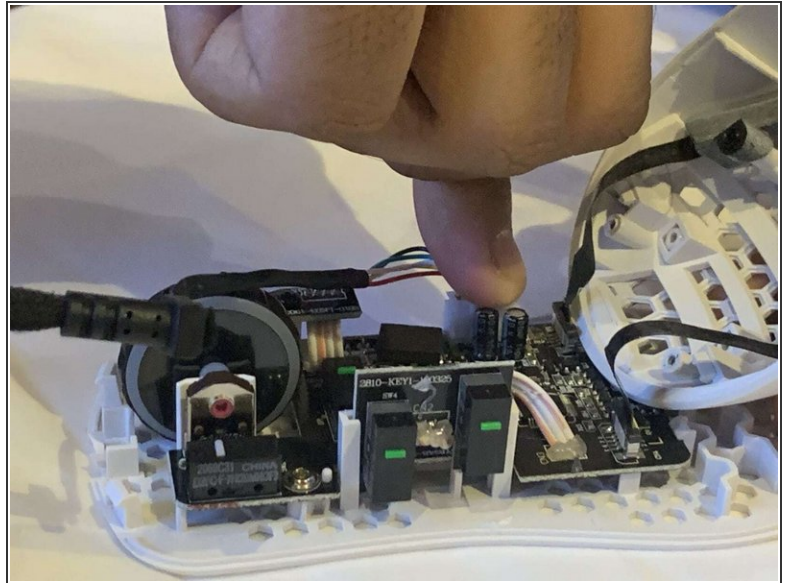
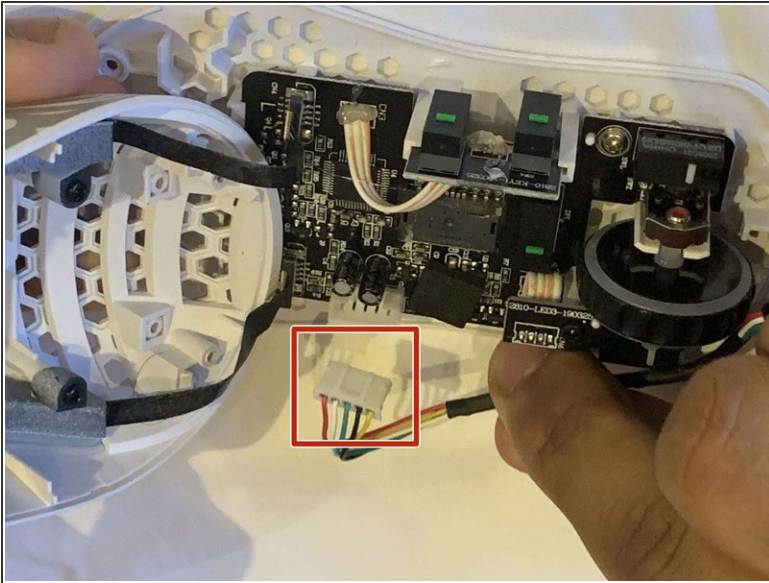
- Using two fingers, grasp both sides of the upper half of the connector, and remove it gently.
- ❗ If the plug feels difficult to grasp, you can use tweezers instead.
 - Hold the tweezers horizontally and position the arms of the tweezers on both sides of the plug and pull up gently, until the plug comes out from the socket.

Step 5



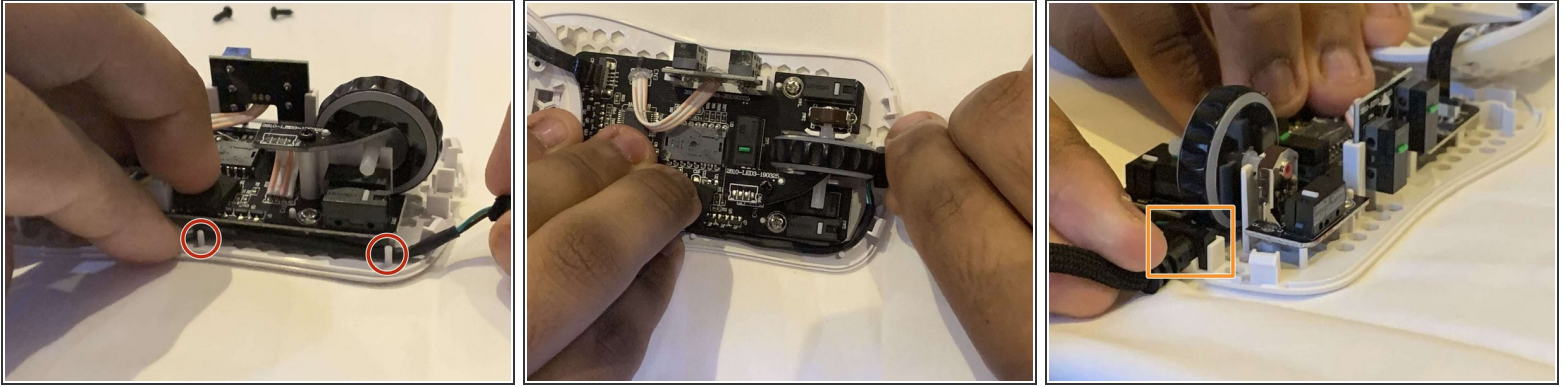
- Remove the old USB A cord from the mouse's housing, leaving only the housings and circuit board.

Step 6



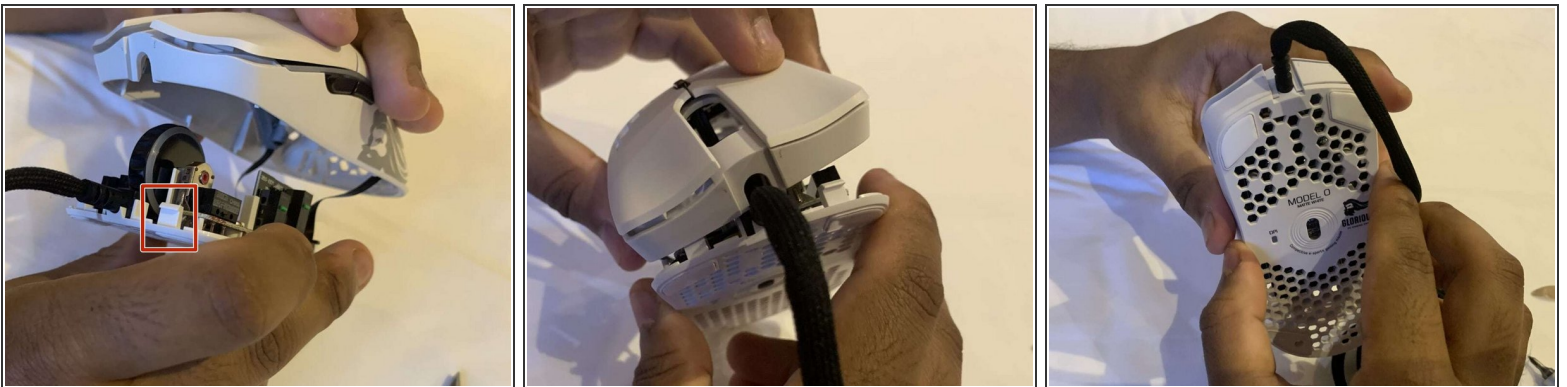
- Position the plug head on the new cord so that the two vertical lines on the plug head face the inside of the mouse.
- Once positioned, push the plug into the socket using your finger.
- ⓘ A good way to know if the plug has successfully connected into the socket is by holding a small portion of the cord above the mouse, and gently tugging on the cord.

Step 7



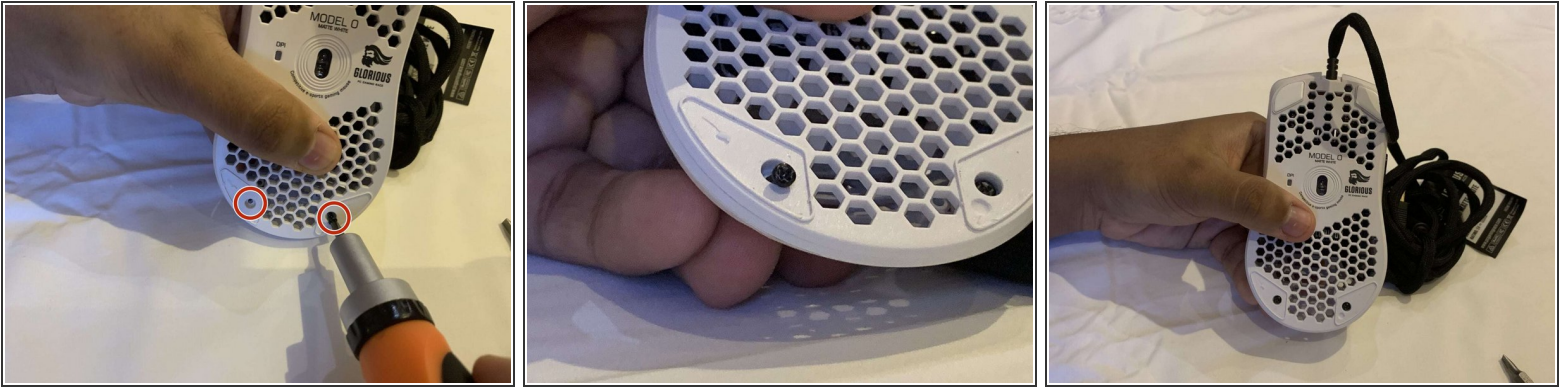
- Take the excess cord of the plug and tuck it between the white indicators and the circuit board of the mouse.
- Insert the plastic cube-shaped piece of the cord into the designated holder just in front of the scroll wheel.

Step 8



- Position the upper housing and clip it onto the claw-like handles.
- Pull down the back end of the upper housing so that the two housings connect together.
- Using your palm, hold the housings together.

Step 9



- Replace the two Phillips #0 screws in the mouse's housing.

Step 10



- Reapply the skates of the mouse with the adhesive side sticking to the mouse itself.
- ❗ There is a left and right skate and an outline on the mouse to help fit the skates in properly.
- ❗ Newly bought cords do come with new skates which can be applied here instead of the old skates.

Congratulations, you just repaired your Model O Gaming mouse.