



# Vinyl Slider Window Sash Glass Pane Replacement

This guide will instruct users on how to remove the glass pane from a slider window (sash) and replace it with a new glass pane.

Written By: Trent Hiner



## INTRODUCTION

If your glass in a vinyl window slider (2-3 pane) is broken, damaged, or in need of general replacement, use this guide to replace the glass pane itself.

A sash is the term which refers to the slider part of the window. They can come in many sizes from small windows to large glass patio doors! Typically they are square or rectangular and slide either horizontally or vertically inside a larger window frame along a track.

Every step of the guide requires you to handle and maneuver potentially broken glass which can be dangerous both from direct contact or from further cracking/breaking. Be sure to act carefully and thoughtfully while avoiding direct contact with the glass whenever possible and use hand protection whenever possible. The edges are very sharp and will cut you if you perform any kind of parallel or sliding motion across them.



### TOOLS:

- [Metal Putty Knife](#) (2)  
1 beveled, 1 no bevel
- [Leather Work Gloves](#) (1)
- [Glass Suction Cup](#) (1)

*Optional*



### PARTS:

- [New glass pane](#) (1)  
*Order off serial number of previous unit*
- [Glazing Tape Roll](#) (1)  
*1/8th inch thickness*

## Step 1 — Glass Pane



- Remove the slider portion of the window from its frame and place it on a flat, soft work surface before beginning.
- Using the non-beveled putty knife, insert the blade into the space between the frame and the stops (long, white strips).
- Wriggle the knife back and forth to free up the stops and then pull the remaining length out by hand.
- Flip the window over after removing all of the stops.

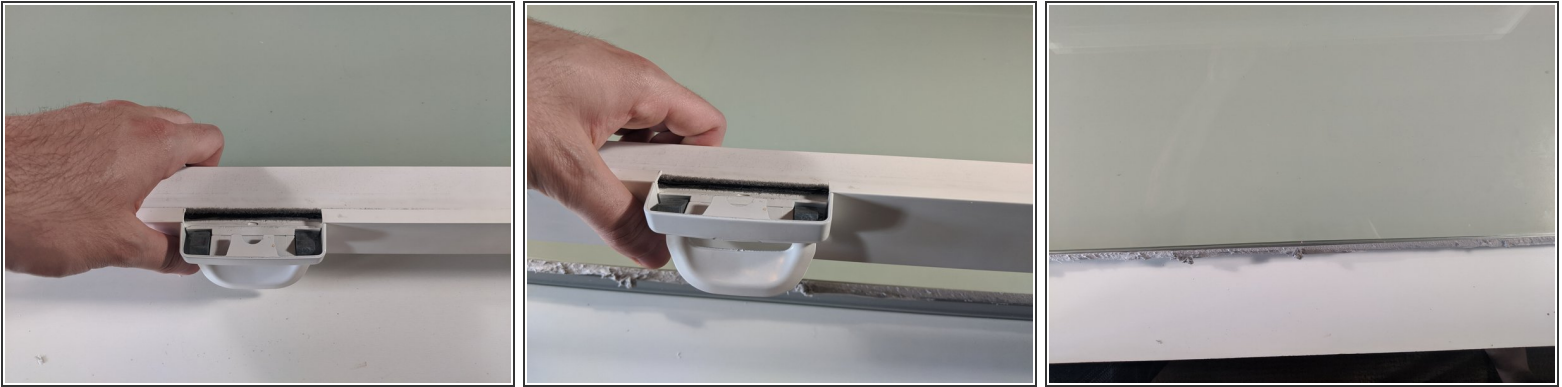
## Step 2



- With the non-beveled putty knife, slip the edge of the knife between the frame and the pane itself.
- Push as far back as you can and slide the knife along its length cutting the glazing tape's adhesive along all 4 sides.
- Continue cutting and the glass should begin to or completely fall away from the frame.

This document was generated on 2020-11-28 08:03:53 AM (MST).

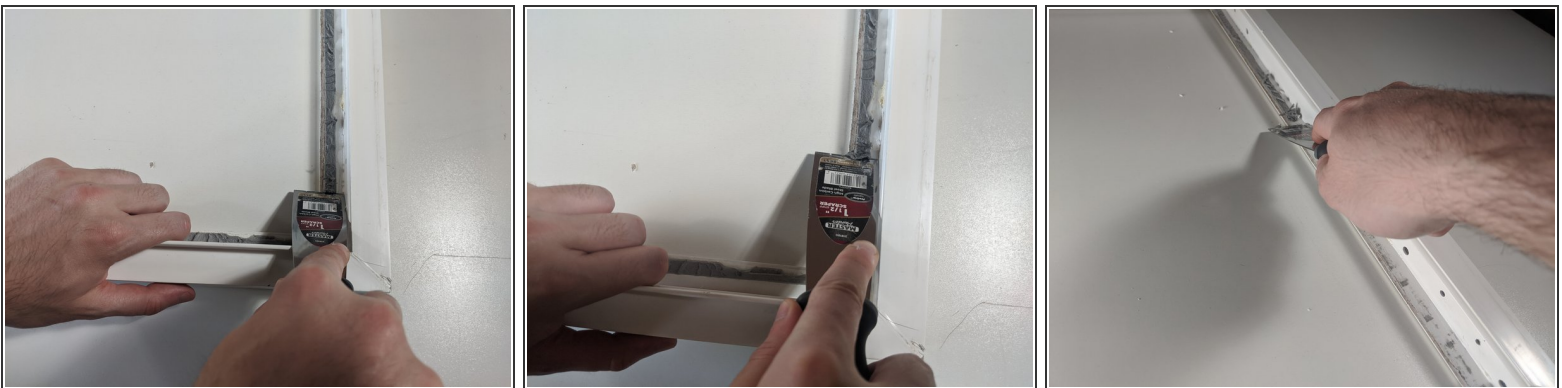
### Step 3



**i** The glass should be completely detached from the frame at this point.

- Lift the frame away from the glass and dispose of the glass while wearing the leather gloves.
- Prepare to work on the frame.
- Flip the frame over again after removing the glass (the remains of the glazing tape should be facing upwards).

### Step 4



- Using the beveled putty knife, scrape away most of the leftover glazing tape from the frame.



## Step 5



- Following the lines of the old tape you scraped off, replace them with the new glazing tape.
- Run a single line of tape down each side cutting it at each corner.
- Ensure that the tape makes a complete, unbroken square (this will make sure you have a strong seal).

## Step 6



- With the non-beveled putty knife (or your fingernail) lift up and remove the blue covering from the glazing tape on all 4 sides.

## Step 7



- Suction the cup to the inside portion of the new glass (you can determine which side is the outside by looking for the purple sheen).
- ⓘ If no purple sheen can be identified, either side can work as the outside.
- While wearing the gloves, carefully lift the glass and set it as squarely as possible in the frame on the exposed glazing tape.

## Step 8



- Reinsert the stops by pushing them into the gap that holds them (this can usually be done with your fingers but these stops were very tight and needed some extra force).
- You should hear a distinctive click when they are fully inserted and will be almost flush with the frame.
- After all 4 stops are reinserted place the slider back in the larger window frame you took it from.

To reassemble your device, follow these instructions in reverse order.