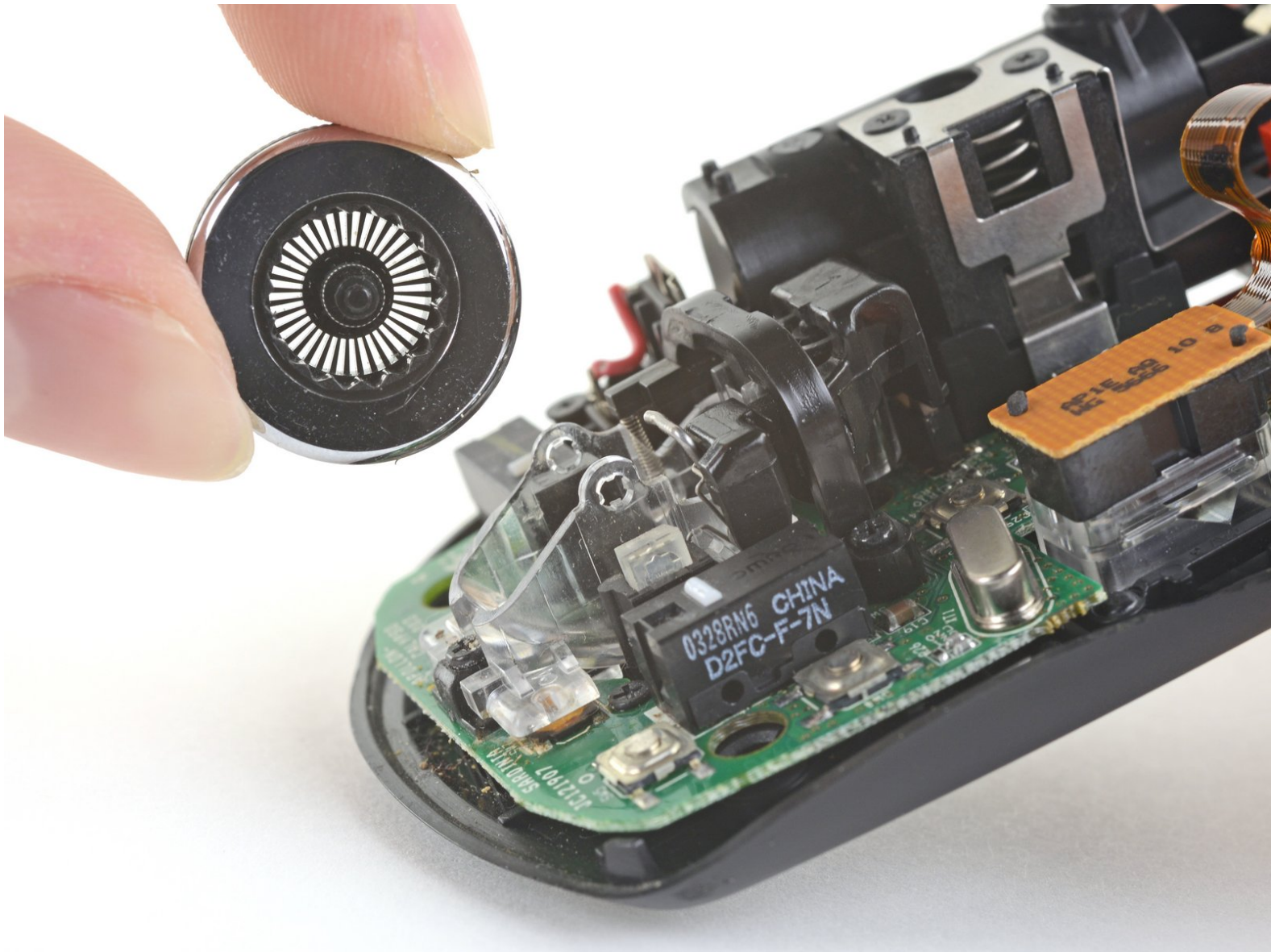




# Logitech VX Nano Wireless Mouse Scroll Wheel Replacement

Replace the scroll wheel in your Logitech VX Nano Wireless Mouse.

Written By: Carsten Frauenheim



# INTRODUCTION

Disassemble your Logitech VX Nano Wireless Mouse to either replace your broken scroll wheel or clean your current one.



## TOOLS:

- [iFixit Opening Picks set of 6](#) (1)
- [Phillips #1 Screwdriver](#) (1)
- [Spudger](#) (1)
- [Tweezers](#) (1)



## PARTS:

- [Logitech VX Nano Wireless Laser Mouse Feet/Skates](#) (1)

## Step 1 — Remove batteries and Nano Receiver



- Pull down on the battery release tab to remove the battery cover.
- Remove battery cover.

## Step 2



- Pull the battery release tab away from the mouse until the two AA batteries come out.



## Step 3



- If the Nano Receiver is still in the mouse, push the bright orange button to remove it. It should pop right out.


## Step 4 — Open the mouse




- Use a Phillips #1 screwdriver to remove the two 6 mm-long screws at the bottom of the battery compartment.
- ⓘ To more easily access the two screws, you could hold the plastic battery tab out of the way of your screwdriver.

## Step 5



 Removing the mouse skates will damage them. During reassembly, you will need to install a new set of skates.

- Insert an opening pick underneath the corner of one of the adhesive skates.
  - ① As you start to remove the skate, make sure that the opening pick is underneath the entire adhesive pad—otherwise you run the risk of [splitting the pad in half](#).
  - Continue to push the opening pick between the adhesive pad and the mouse case, slowly working the adhesive away from the case.
  - Repeat this same process for the two other skates.
-  During reassembly, remove any old adhesive residue before applying new mouse skates.

## Step 6



- Use a Phillips #1 screwdriver to remove the three 6 mm-long screws from the backside of the mouse.
- ⓘ The top shell and bottom case are no longer connected. Keep the mouse level so the top shell doesn't fall off.

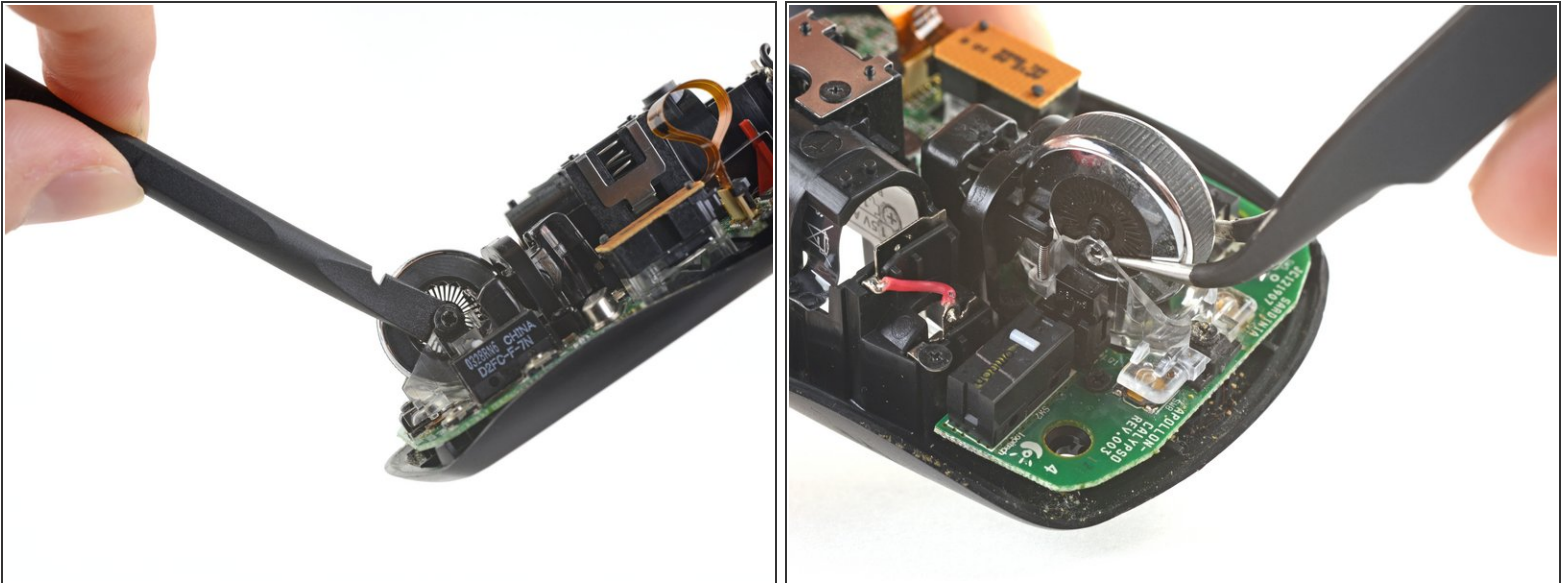
## Step 7



- Lift the top shell straight up to separate the top plastic shell from the bottom case.
- Remove the top shell.

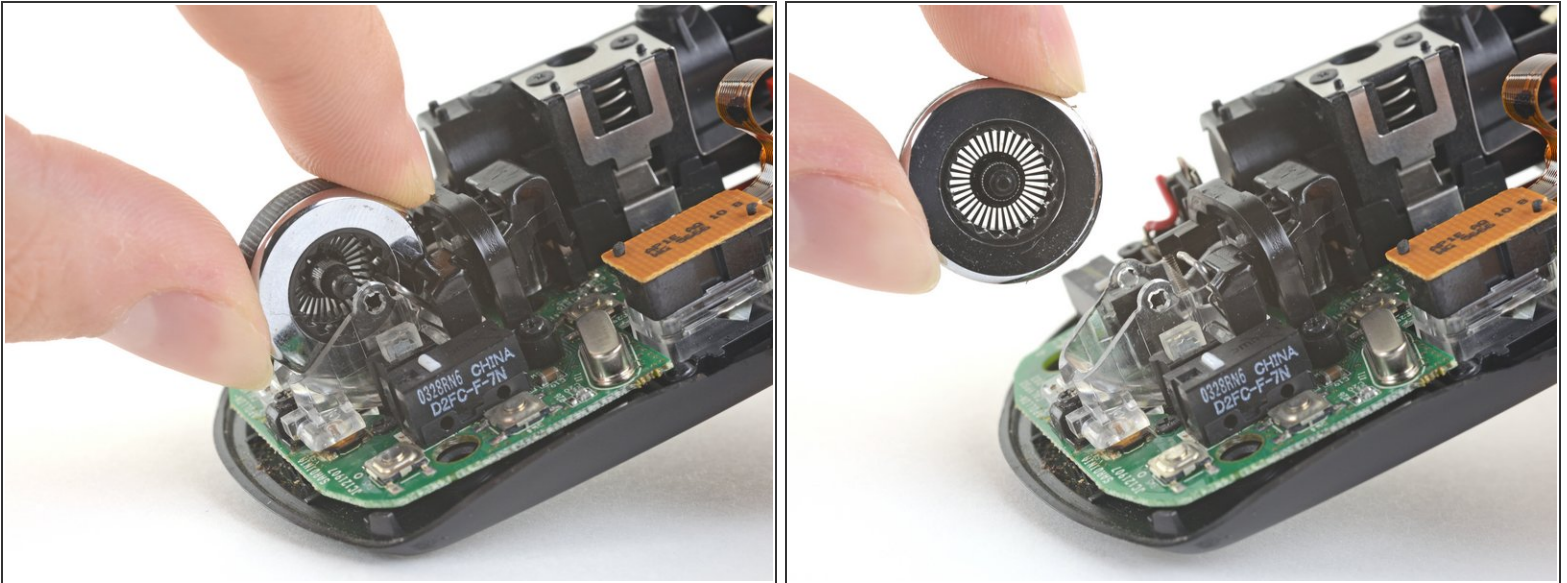


## Step 8 — Remove the scroll wheel



- Use the flat end of a spudger to carefully pry one side of the scroll wheel out of its clear plastic housing.
  - Use a set of tweezers to grasp either side of the scroll wheel near the axle. Use one side of the tweezers to keep the scroll wheel from popping back into the clear plastic housing on the side you already disconnected.
  - At the same time, use the other side of the tweezers to pull the opposite side of the scroll wheel loose from the clear plastic housing.
- ⓘ This may take multiple tries. Don't lose hope! Use the tweezers to hold the clear plastic away from the scroll wheel as you pull up on it in the next step.

## Step 9



- Pull the scroll wheel up and away from the clear plastic housing and the spring holding it in place.
  - ⚠ These plastic pieces are brittle! Too much bending force can break the scroll wheel housing.
- ☑ Before reassembly, check that the replacement scroll wheel easily switches between smooth and indexed scrolling.

To reassemble your device, follow these instructions in reverse order.