



# 2000-2006 BMW X5 Reverse Backup Camera Replacement

How to install a reverse backup camera that operates automatically when you put your BMW in reverse

Written By: Martin Bishop



This document was generated on 2020-11-20 11:04:57 AM (MST).

---

## INTRODUCTION

[video: <https://www.youtube.com/watch?v=1Ka80c9dMCQ>]

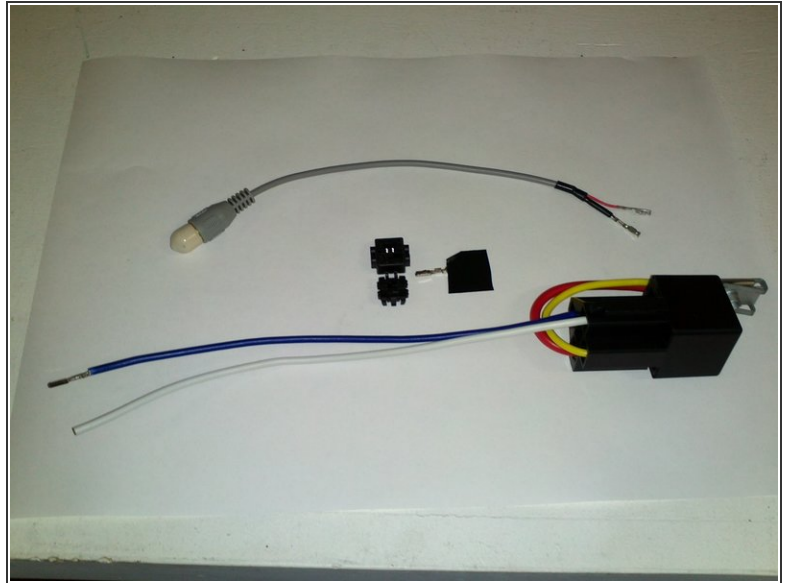
---



## PARTS:

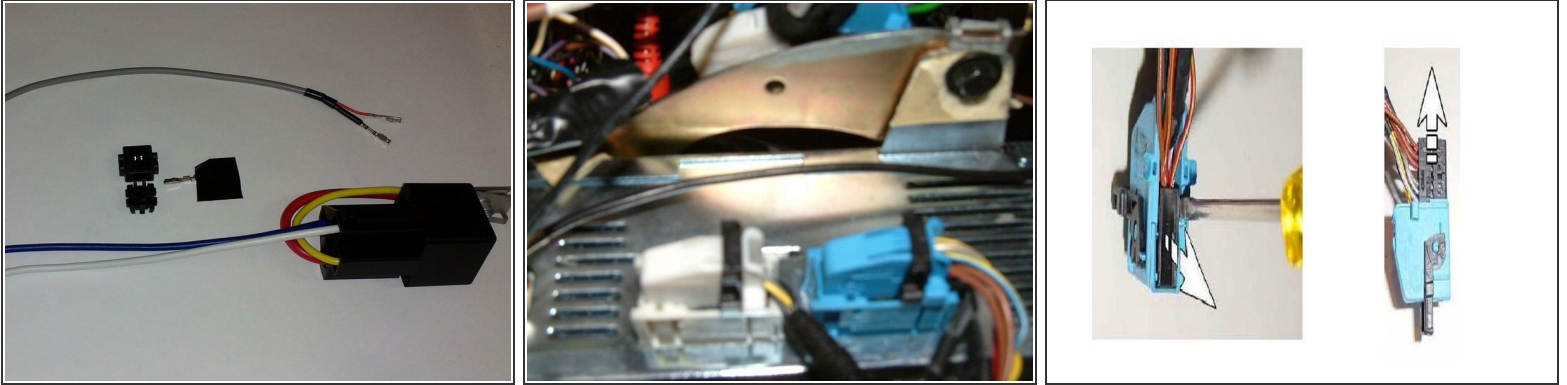
- [Reverse Camera Switching Module](#) (1)
-

## Step 1 — Reverse Backup Camera



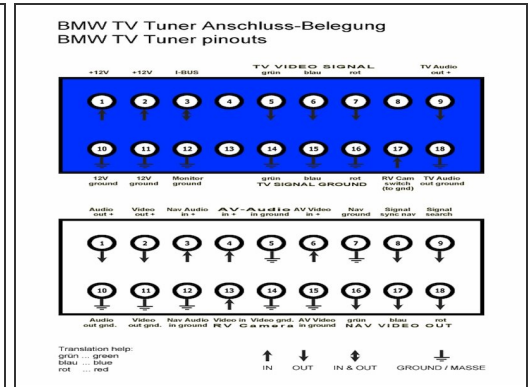
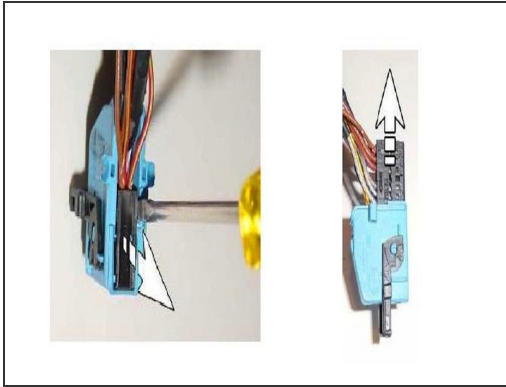
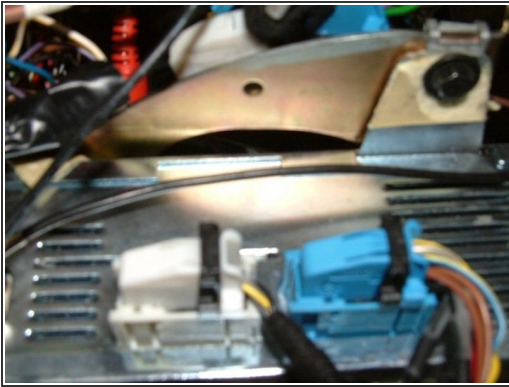
- In the BMW E46 E38 E39 X5 Z4 X3 and Range Rover with the television module you can easily connect a reverse backup camera providing you with full backup camera function on your BMW Display
- Car will need to be equipped with BMW TV video module. If not equipped you will need to retrofit BMW Television module. Google Search: retrofit bmw television module --- for available options
- Backup Camera Automatic Switching Requires a reverse camera switching module kit, and a NTSC reverse camera mounted in any location desired.

## Step 2



- Connect Switching module BLUE wire into Pin 17 on the BLUE plug on your TV video module.
- Slide the Black Locking lever to the side on your TV video module to release the Blue plug.
- Remove the cover of the blue plug by gently lifting up on the cover locking tab with a small screw driver. Then slide the cover off.
- Insert the BLUE pin into the Pin location 17. If you look closely you will see the number 18 on the black part of the plug. Pin 17 would be the next pin location over
- PLEASE NOTE: IF your camera switch module has an extra wire in the center marked 87a it is NOT connected anywhere. This extra wire, if present, is not used.

## Step 3



- Connect the RCA connectors that come with the Reversing Camera Switching module to the white plug.
- Remove the cover of the white plug as before.
- Insert the Colored wire on the RCA Plug into the White plug Pin location 13
- Insert the BLACK wire on the RCA Plug into the White plug Pin location 14
- See wiring diagram for reference
- Switch module must be connected to a negative chassis ground point in the car (Such as metal screw into metal on car)



## Step 4



- Install your Reversing Camera to the proper specifications of the Camera supplier.
- Connect the RCA Camera Output (MALE RCA) into the Reversing Camera Switching module RCA Video input cable (FEMALE RCA)New line.

To reassemble your device, follow these instructions in reverse order.