



Nest Hello Battery Replacement

If your Nest Hello is losing charge faster than...

Written By: Daniel Moore



INTRODUCTION

If your Nest Hello is losing charge faster than it used to, or refusing to power-on despite troubleshooting, this guide will help you access a faulty battery. The following steps will require the iFixit opening picks, Phillips #000 screwdriver, and tweezers. While removing the faceplate and casing from the device it is easy to damage the waterproofing O-Ring, so [plan on replacing that as well](#).

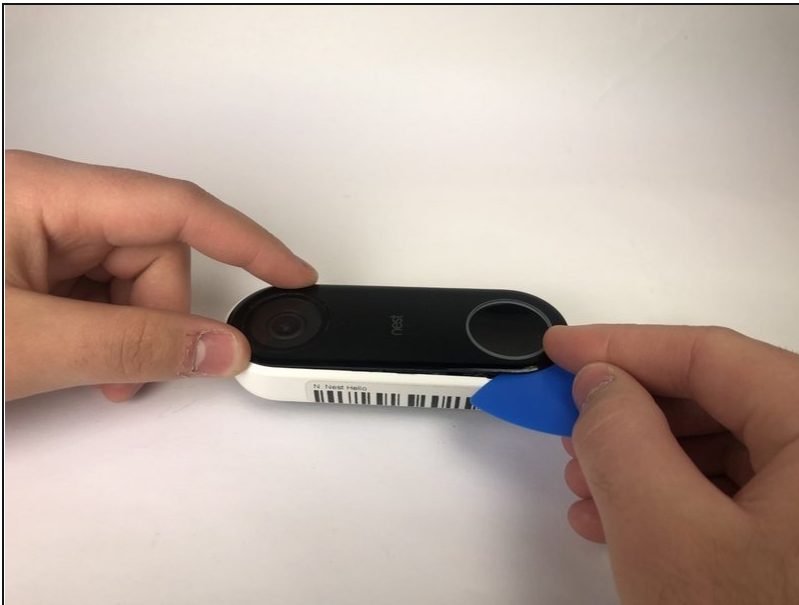
🔧 TOOLS:

Spudger (1)
iFixit Opening Picks (Set of 6) (1)
Phillips #000 Screwdriver (1)
Tweezers (1)

⚙️ PARTS:

C1241290 - Nest Hello Battery Replacement (1)

Step 1 — Casing and Faceplate



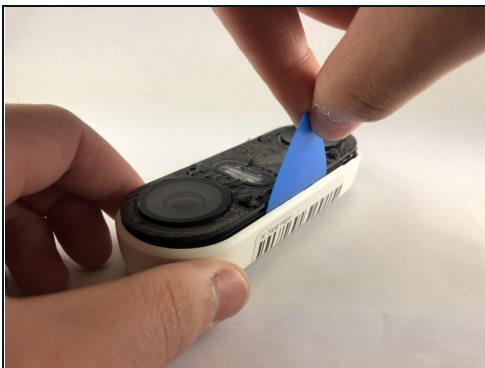
- Insert the pick between the black faceplate and white casing of the Nest Hello.
- Pry the faceplate away from the device with the opening pick.
- ❗ If you have not opened the Nest Hello before, there will be a protective foam mesh that is glued to the plastic covering and the inside of the mesh, use a pick to cut through the mesh as much as possible.
- Completely remove the faceplate from the device, do not be afraid to pull hard.

Step 2



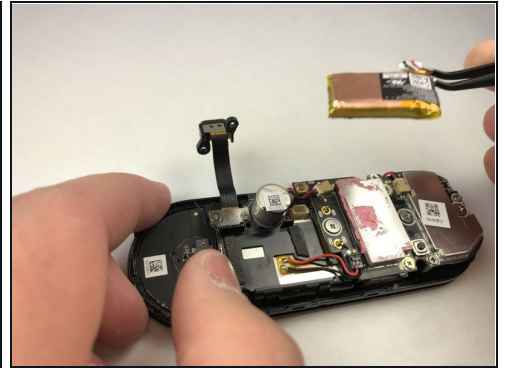
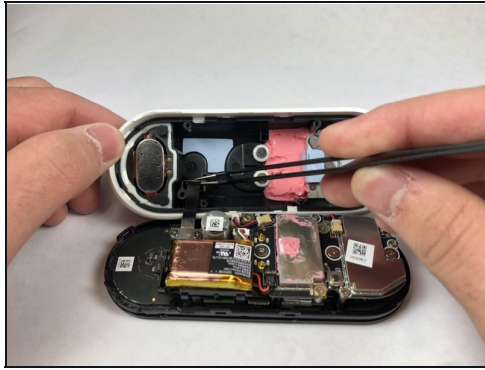
- Peel back the cover stickers and use the Phillips #000 screwdriver to remove the four screws.

Step 3



- Insert opening pick between the white casing and the black internal circuitry and pry it out.
- ⓘ There is a ribbon cable connecting the white casing to the circuit boards. Be careful not to tear out the cable while separating the casing from the circuit boards.

Step 4 — Battery



- Once the back casing is removed, disconnect the battery cable and remove the battery from the device.

To reassemble your device, follow these instructions in reverse order.