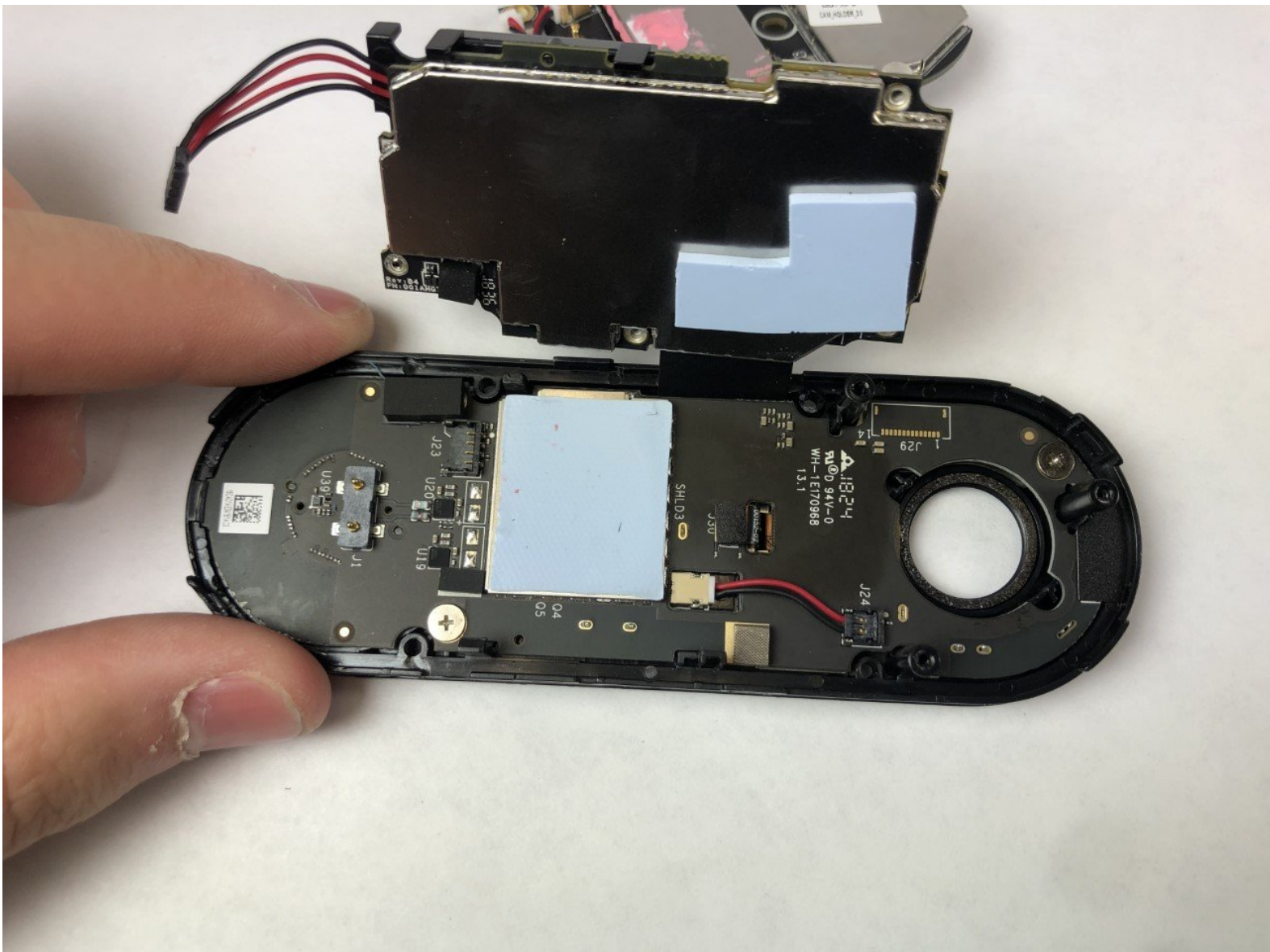




Nest Hello Motherboard Replacement

This guide will show you how to remove the motherboard in the Nest Hello.

Written By: Daniel Moore



INTRODUCTION

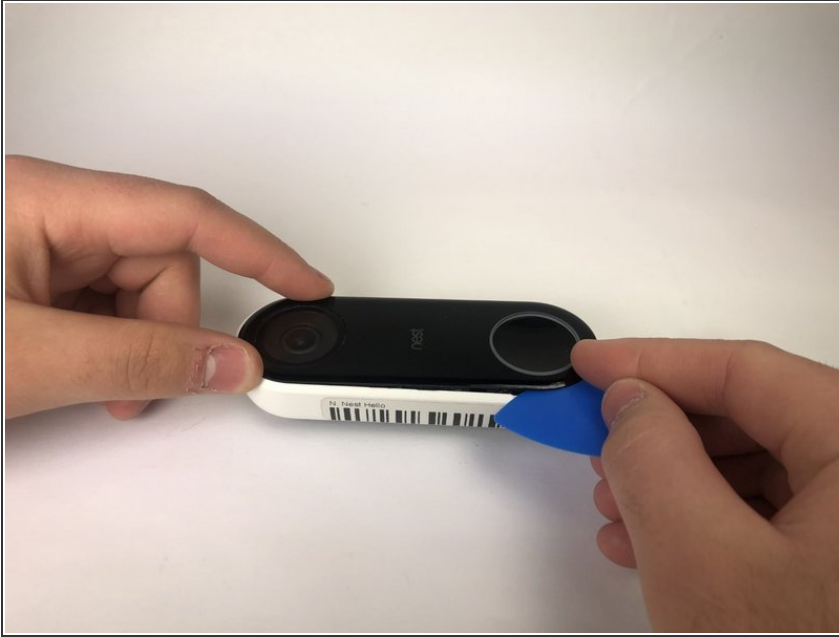
The motherboard functions as the central hub of communication between all of the components in a device. If your device isn't functioning properly and if multiple components are failing, the motherboard may need to be replaced. Use this guide to replace the motherboard in the Nest Hello.



TOOLS:

- [iFixit Opening Picks set of 6](#) (1)
 - [Spudger](#) (1)
 - [Phillips #000 Screwdriver](#) (1)
-

Step 1 — Casing and Faceplate



- Insert the pick between the black faceplate and white casing of the Nest Hello.
- Pry the faceplate away from the device with the opening pick.
- ❗ If you have not opened the Nest Hello before, there will be a protective foam mesh that is glued to the plastic covering and the inside of the mesh, use a pick to cut through the mesh as much as possible.
- Completely remove the faceplate from the device, do not be afraid to pull hard.

Step 2



- Peel back the cover stickers and use the Phillips #000 screwdriver to remove the four screws.

Step 3



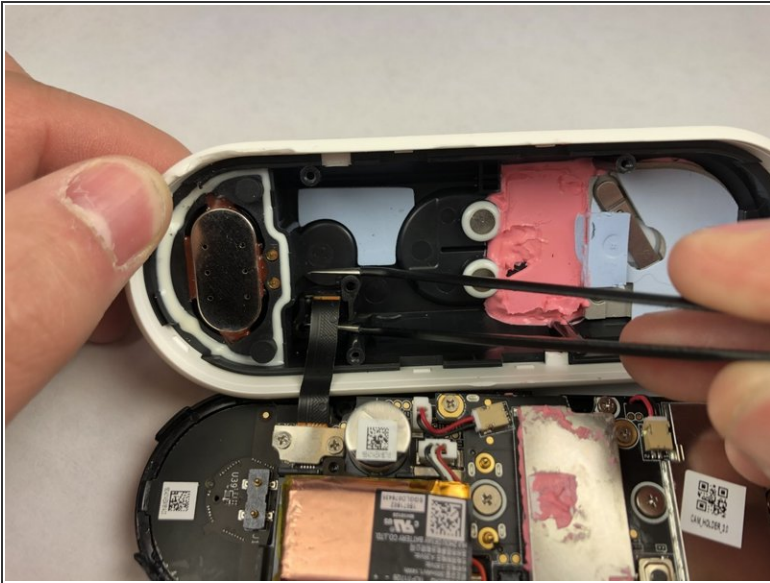
- Insert opening pick between the white casing and the black internal circuitry and pry it out.
- ⓘ There is a ribbon cable connecting the white casing to the circuit boards. Be careful not to tear out the cable while separating the casing from the circuit boards.

Step 4 — Motherboard



- Use the Phillips #000 to remove the two screws holding the ribbon cable to the white casing.

Step 5



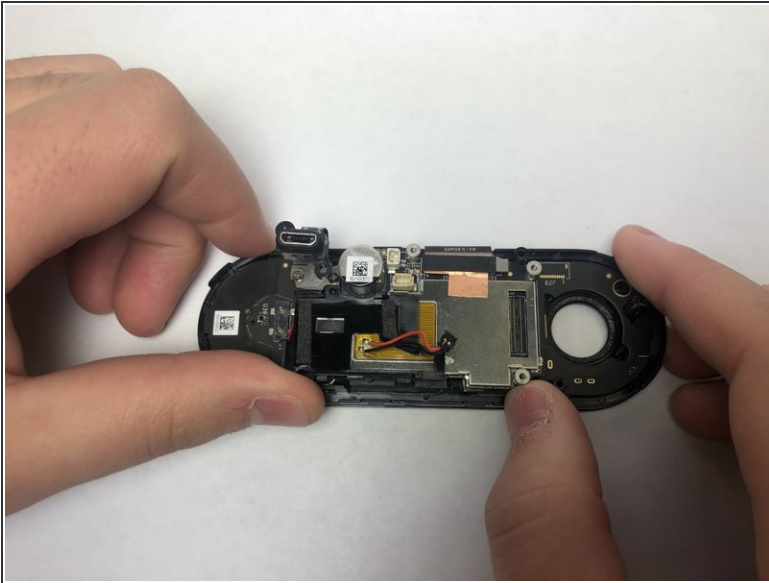
- Grip the connector with the tweezers as shown and pull it away from the casing.

Step 6



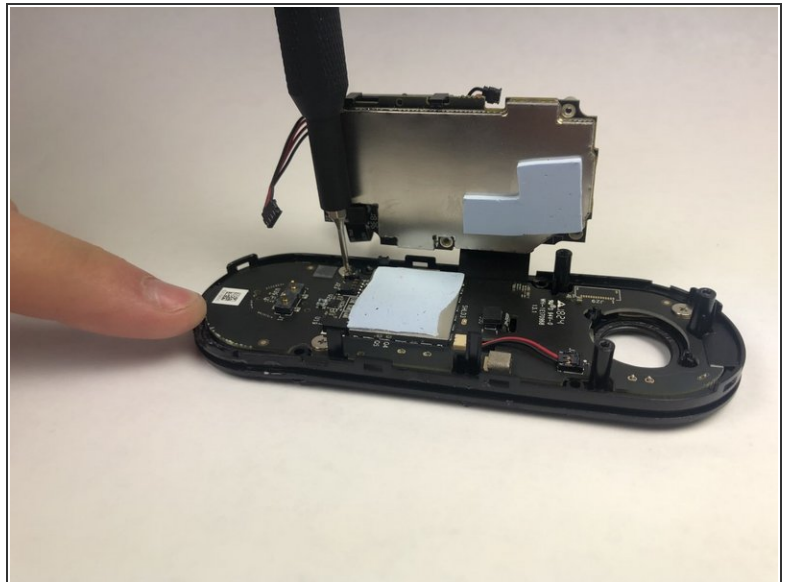
- Remove the six smaller screws shown with the Phillips #000 screwdriver.
- Remove the three larger screws shown with the Phillips #000 screwdriver.

Step 7



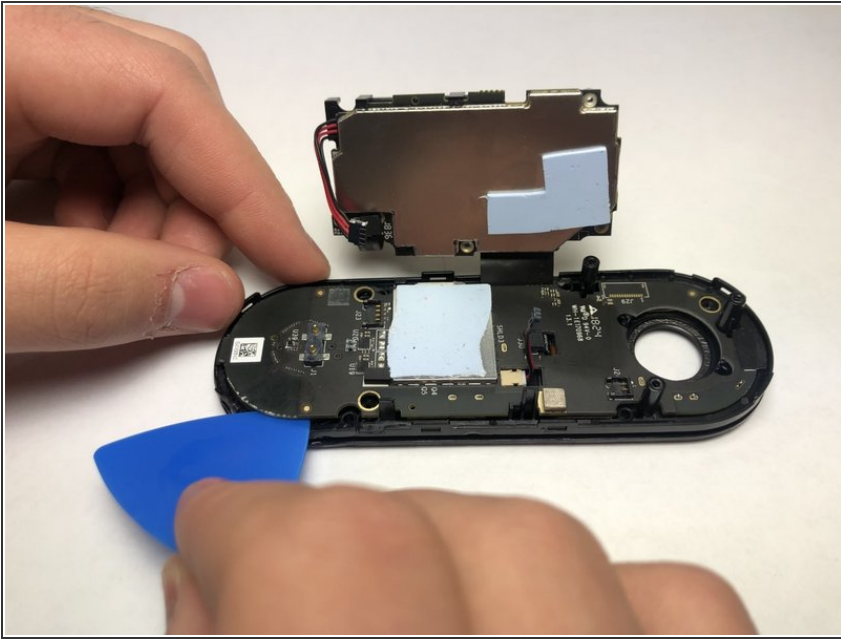
- Holding the device as shown push the circuit board away from you and up to free it from the clips.

Step 8



- Use the Phillips #000 screwdriver to remove the three screws holding the last circuit board to the black plastic housing.

Step 9



- Insert the pick underneath the black connectors and pry them upward to disconnect them from the circuit board.
- Work your way around the device, prying the circuit board away from the housing.
- ⓘ Make sure to feed the wires when taking off the circuit board.

To reassemble your device, follow these instructions in reverse order.