



Samsung Galaxy Tab 4 8.0 Verizon Display Replacement

This guide will show you the steps to follow...

Written By: Chandler Davis Beale



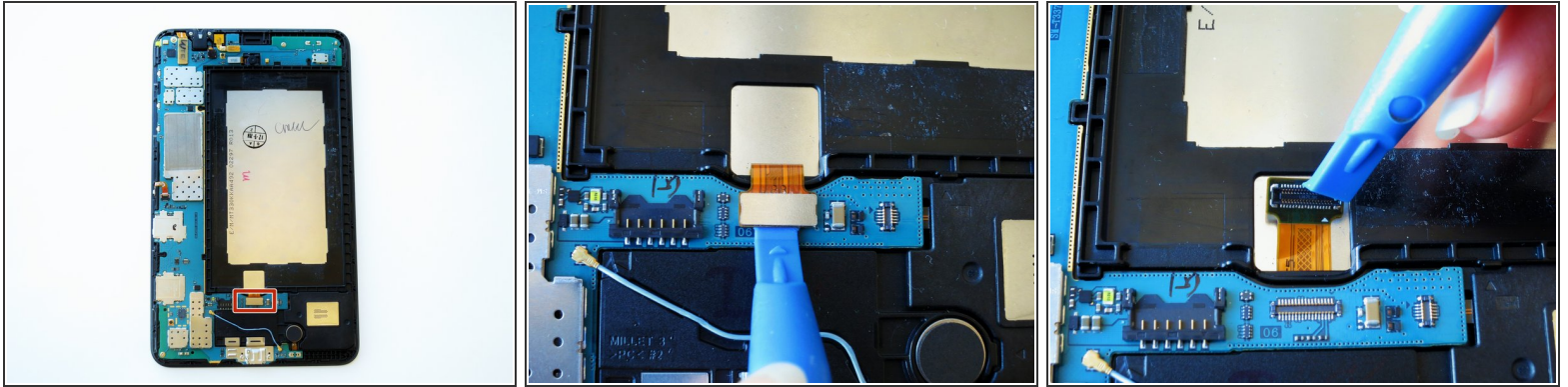
INTRODUCTION

This guide will show you the steps to follow when replacing the display on your Samsung Galaxy Tab 4 8.0 Verizon.

TOOLS:

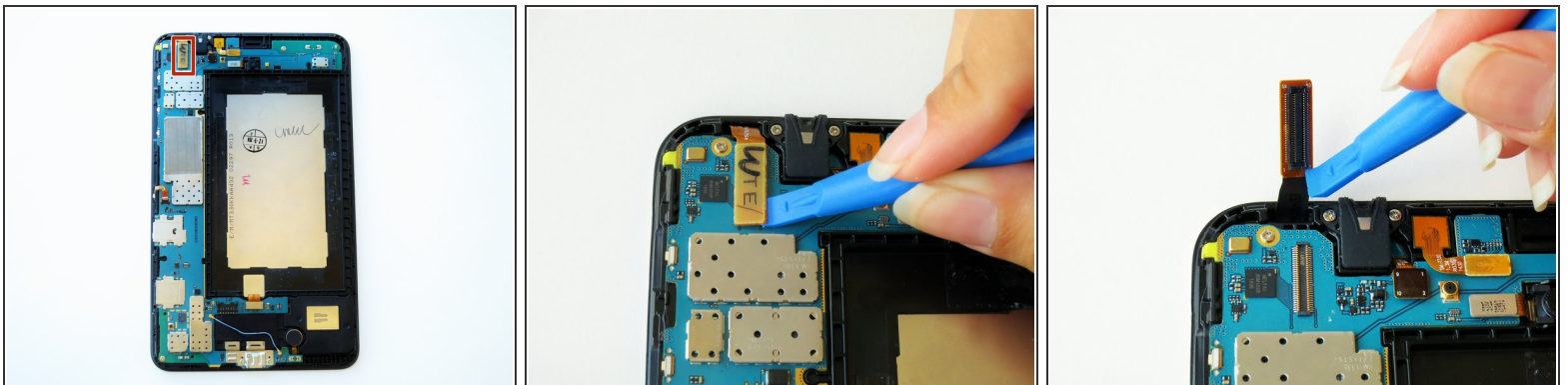
- [Tweezers](#) (1)
 - [iFixit Opening Picks \(Set of 6\)](#) (1)
 - [iFixit Opening Tool](#) (1)
 - [Phillips #0 Screwdriver](#) (1)
 - [Jimmy](#) (1)
-

Step 1 — Motherboard



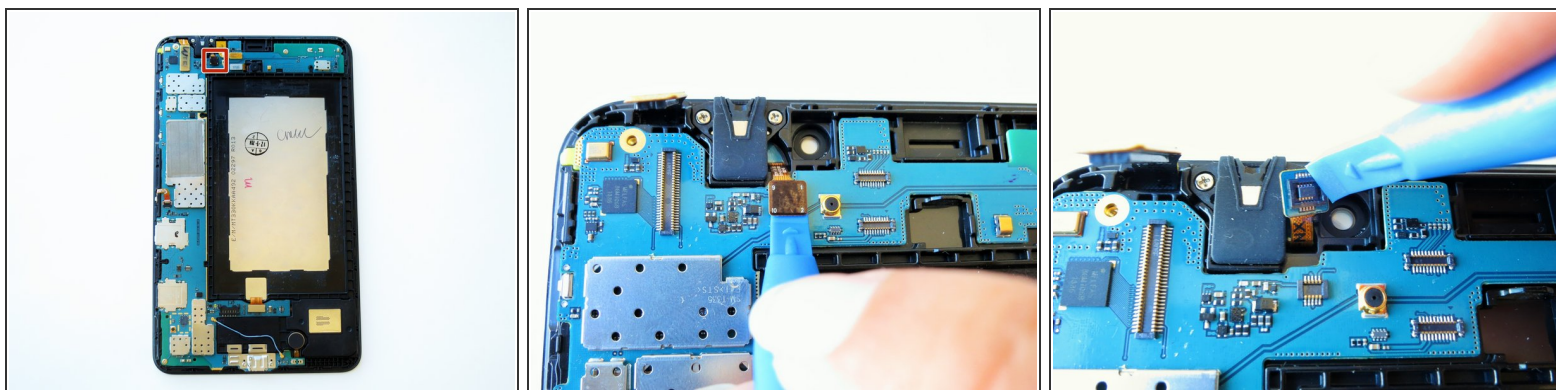
- Slightly apply pressure and move the blue plastic opening tool downwards to pop the metallic rectangular connector from its socket on the mother board.

Step 2



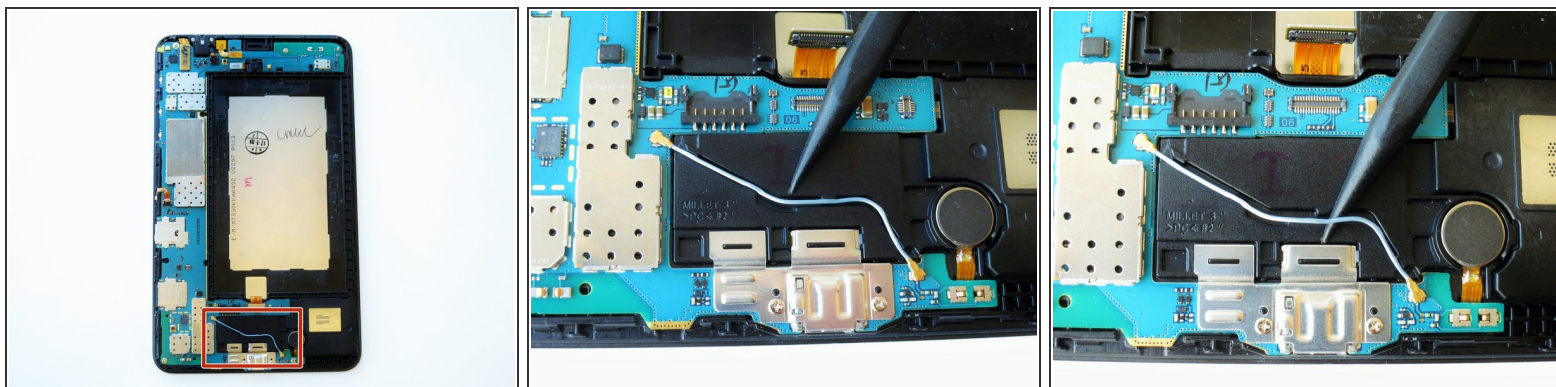
- Slightly apply pressure and move the blue plastic opening tool downwards to pop the gold rectangular connector from its socket on the mother board.

Step 3



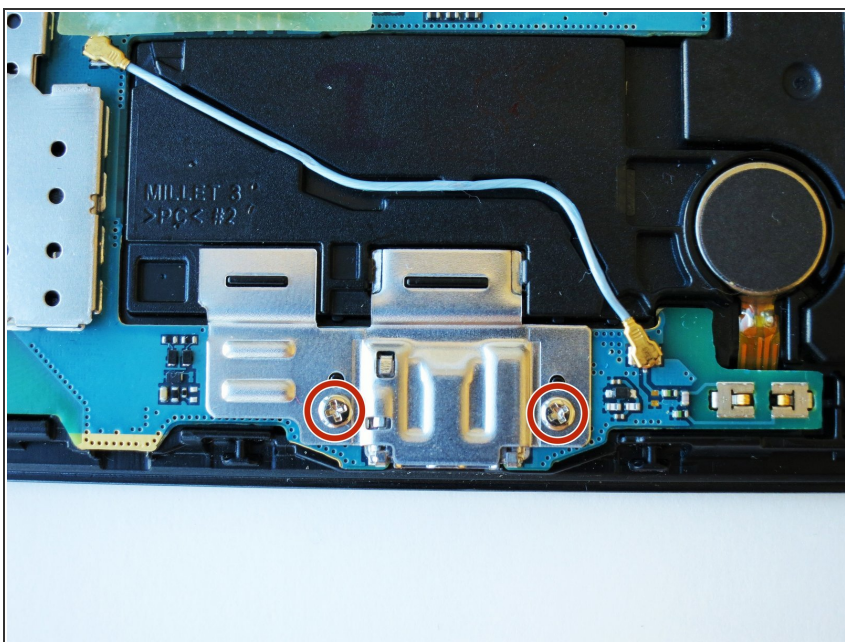
- Slightly apply pressure and move the blue plastic opening tool downwards to pop the gold square connector from its socket on the motherboard.

Step 4



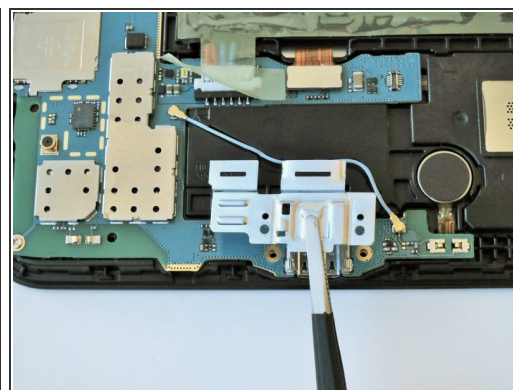
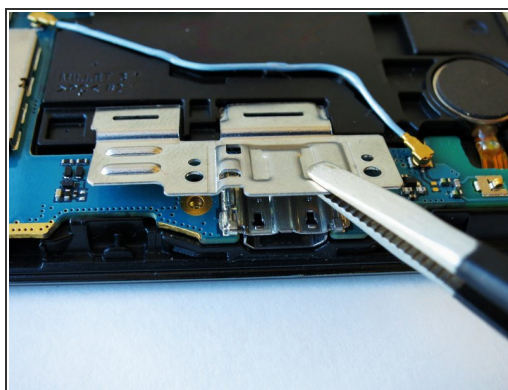
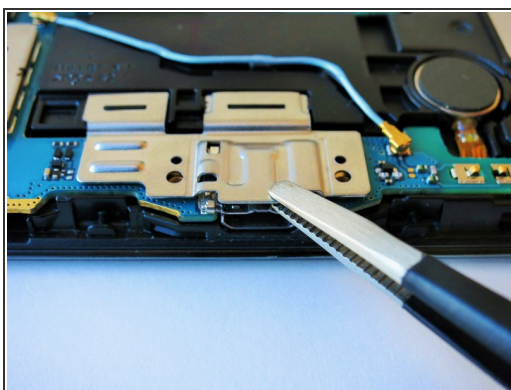
- Using the spudger gently wedge the blue wire out of its compartment.

Step 5



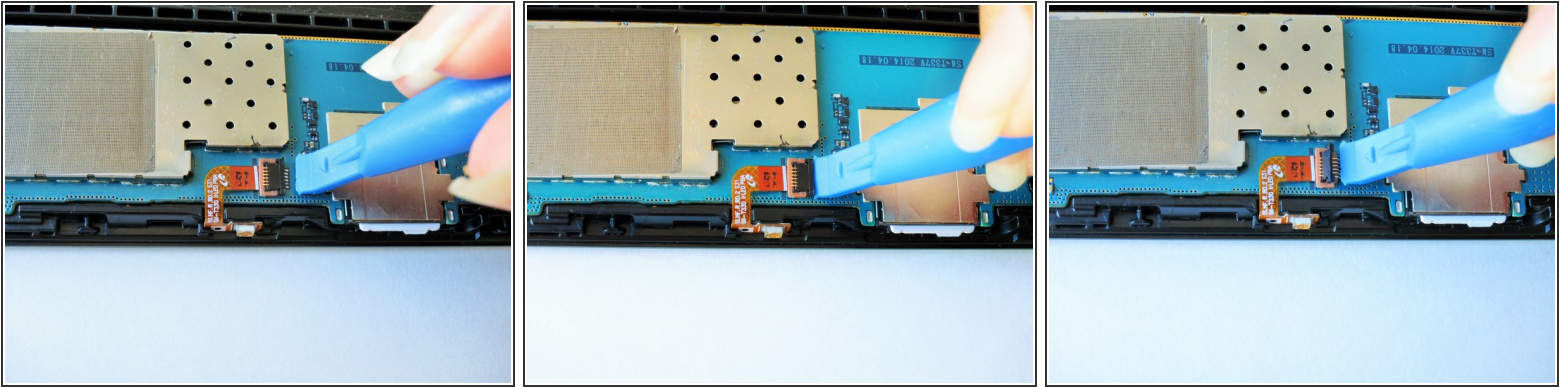
- Remove two 2 mm #000 Phillips screws securing the metallic charger port cover to both the logic board and the front panel.

Step 6



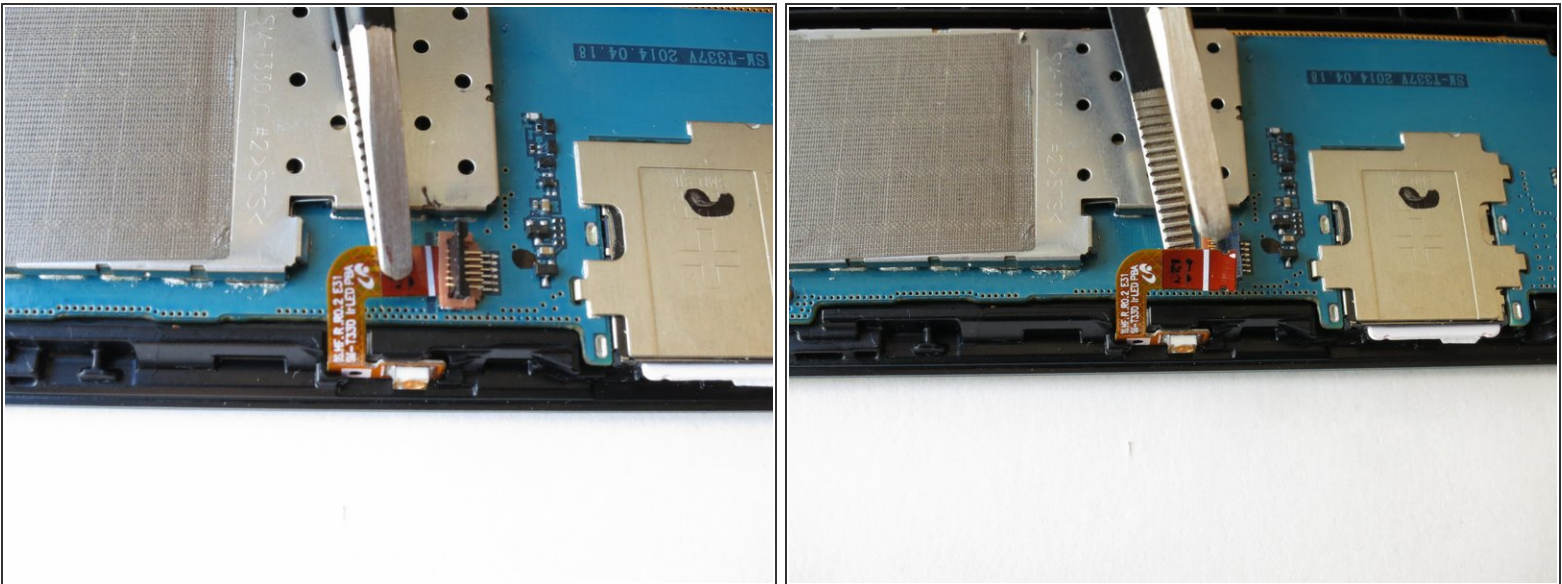
- Squeeze the metal charger port cover piece with the tweezers to gently lift it from its place.

Step 7



- Carefully insert the flat end of the blue plastic opening tool under the black plastic fastener and lift.
- ⓘ Rotate your tablet counter clockwise to facilitate the process.

Step 8



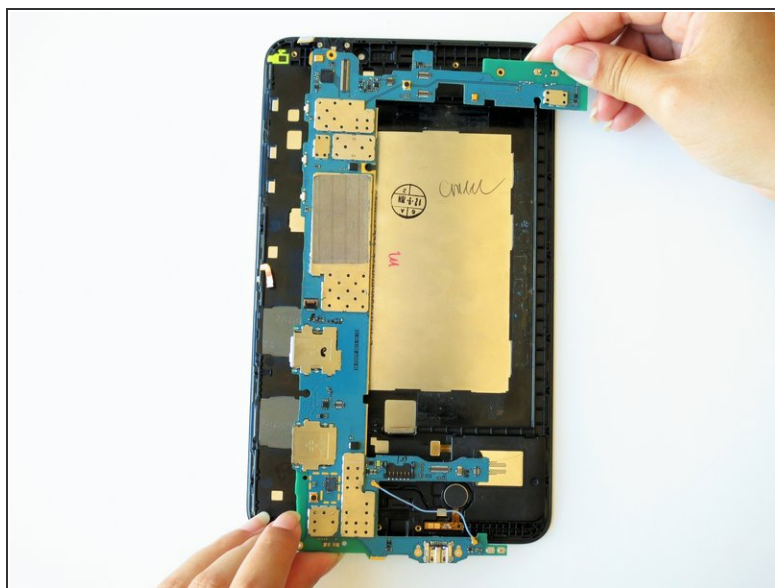
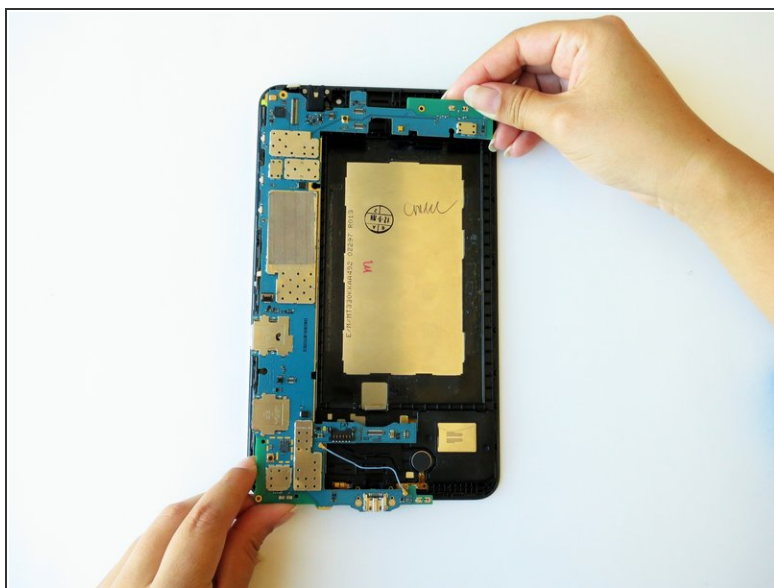
- Squeeze the golden cable with the tweezers and gently pull the cable to the left to free the end of the golden cable.
- ⓘ The golden cable is delicate so use gentle force.

Step 9



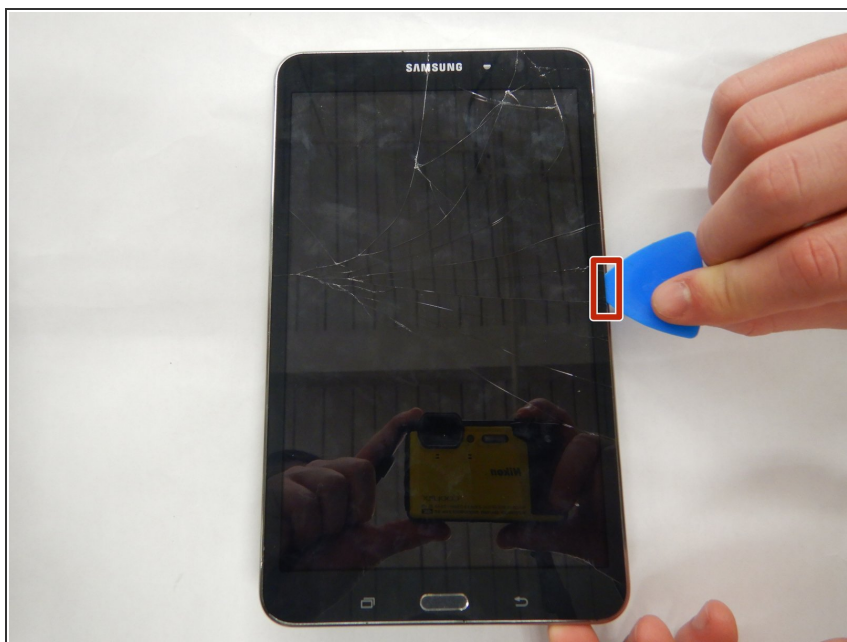
- Remove three 2 mm #000 Phillips screws securing the mother board to the front panel.

Step 10



- Using your hands, hold the opposite ends of the mother board corners, and lift.

Step 11 — Display



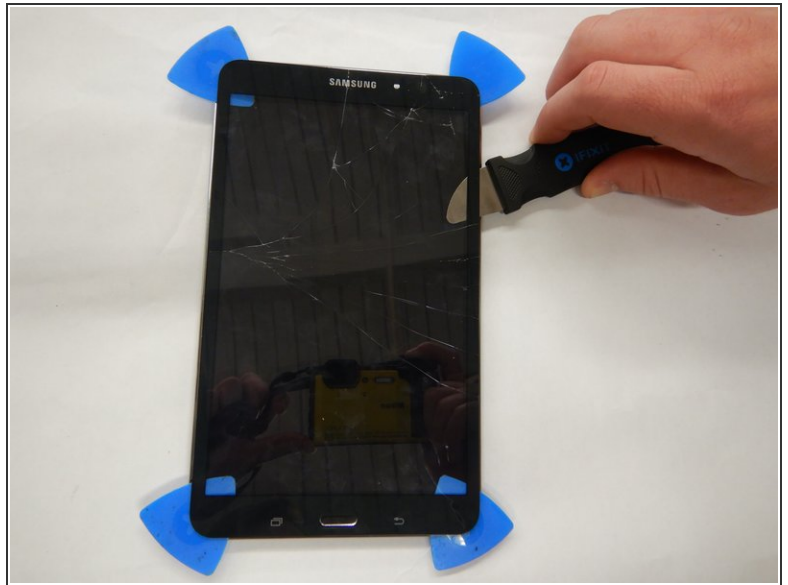
- Insert an opening pick in between the display screen and the display frame.

Step 12



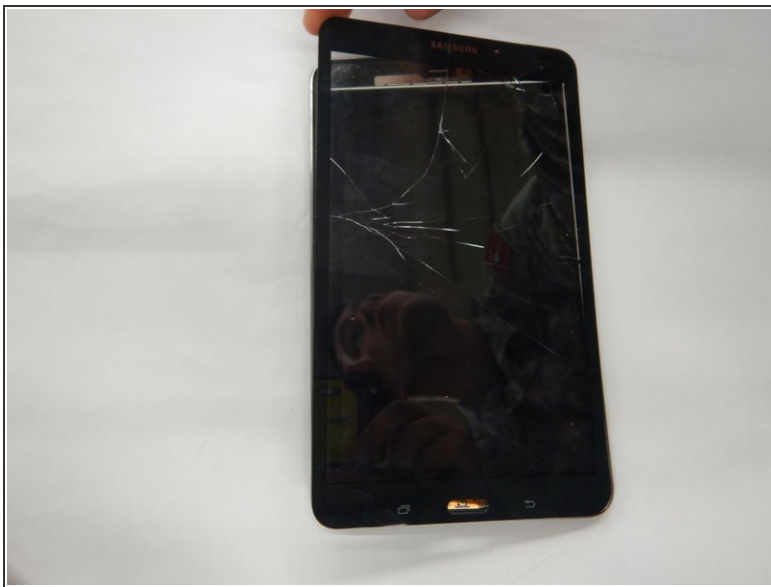
- Wedge four of the opening picks in between the display screen and the device backing on all four corners.

Step 13



- Wedge the Jimmy between the display and the device backing at a corner.
- Cut through the adhesive that is securing the screen to the device on all four sides.

Step 14



- Once the display is completely disconnected from the device gently remove it without touching the screen which lies underneath.

To reassemble your device, follow these instructions in reverse order.