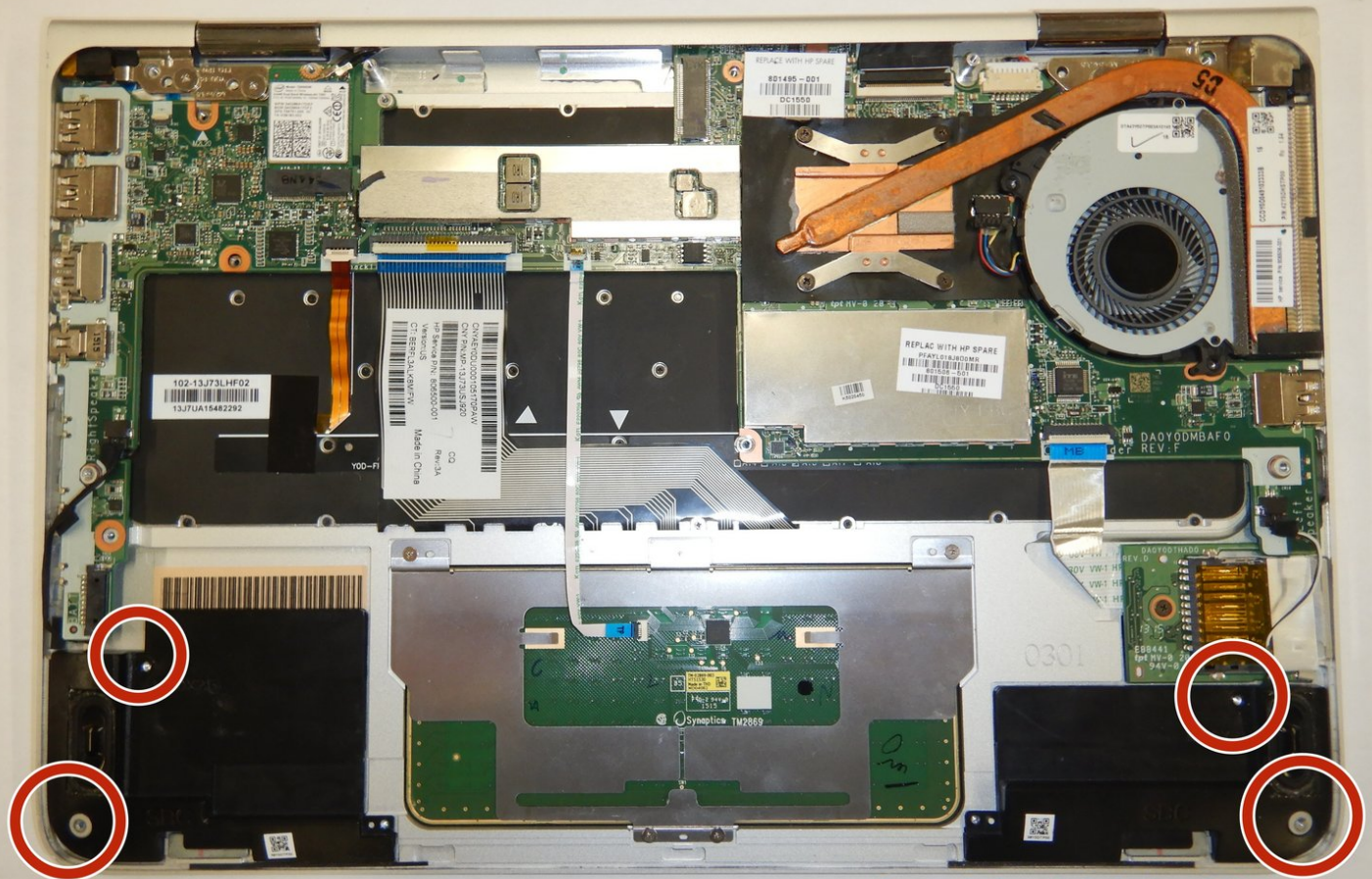




HP Spectre 13-4002dx Speakers Replacement

This guide shows you how to replace the speakers in the HP Spectre 13-4002dx.

Written By: Brian Horn



05.03.2020 09:10

INTRODUCTION

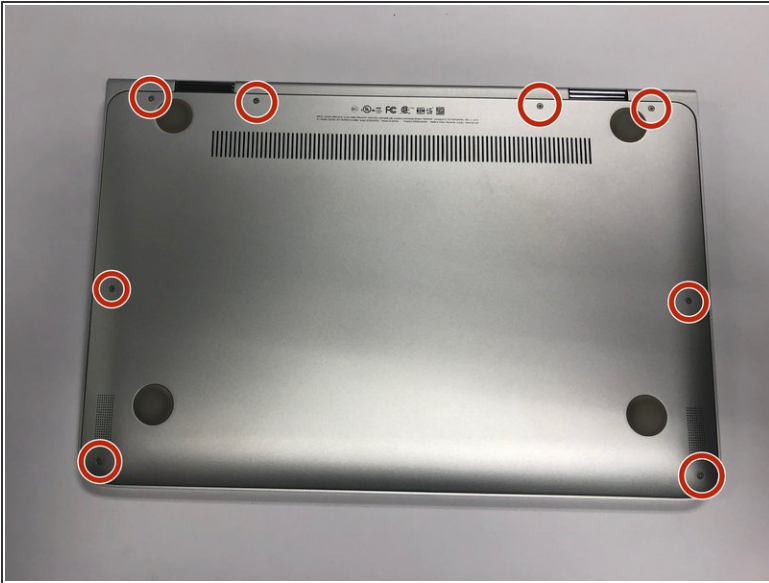
The speakers are integral for playing audio in your device. If the audio is choppy or if the audio isn't properly playing, you may need to replace the speakers in your device. Use this guide to replace the speakers in your laptop.



TOOLS:

- [T5 Torx Screwdriver](#) (1)
 - [Spudger](#) (1)
 - [Tweezers](#) (1)
 - [Phillips #000 Screwdriver](#) (1)
 - [Phillips #0 Screwdriver](#) (1)
 - [Phillips #00 Screwdriver](#) (1)
 - [iFixit Opening Tools](#) (1)
-

Step 1 — Bottom Case



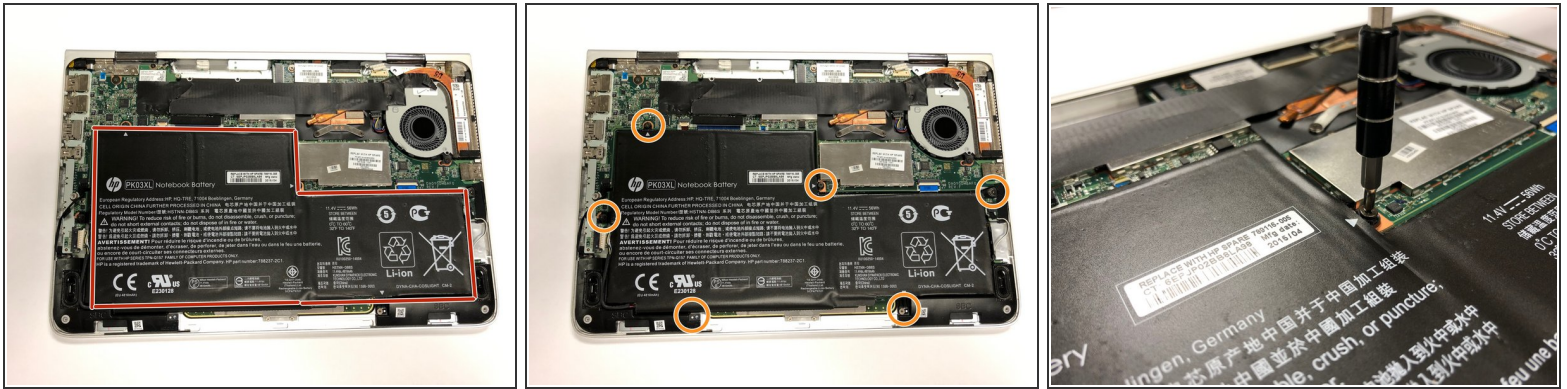
- Using the Torx T5 screwdriver, remove the eight 8 mm screws on the bottom case of the laptop.

Step 2



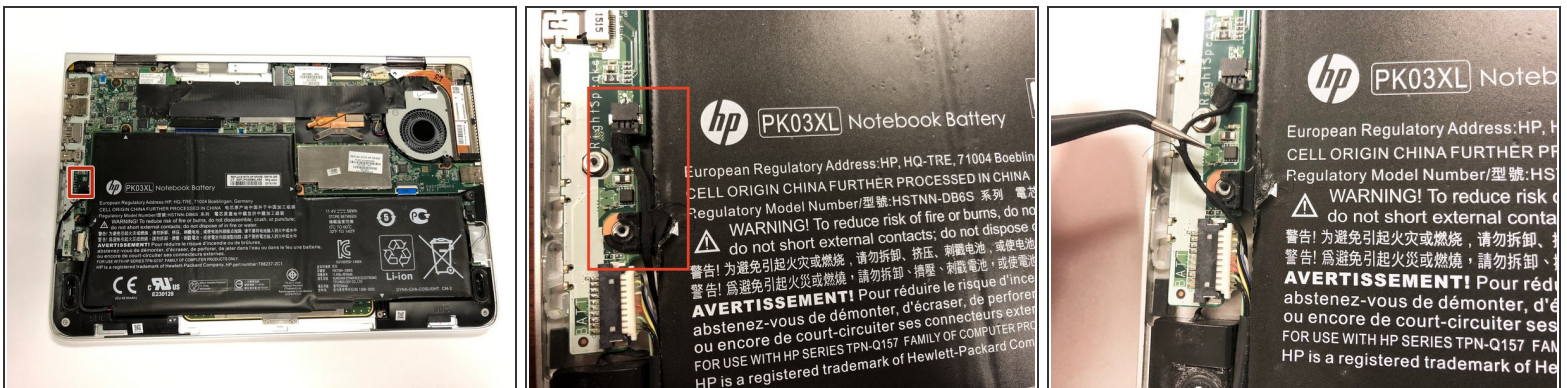
- Pry up one corner of the bottom case with a spudger.
- Work the spudger around the edges, making your way towards the bottom of the laptop.
- Remove the bottom case.

Step 3 — Battery



- Orient the laptop the same way as the pictures. The battery is bordered in a red outline.
- Remove the six 4 mm screws using a Phillips #000 screwdriver.

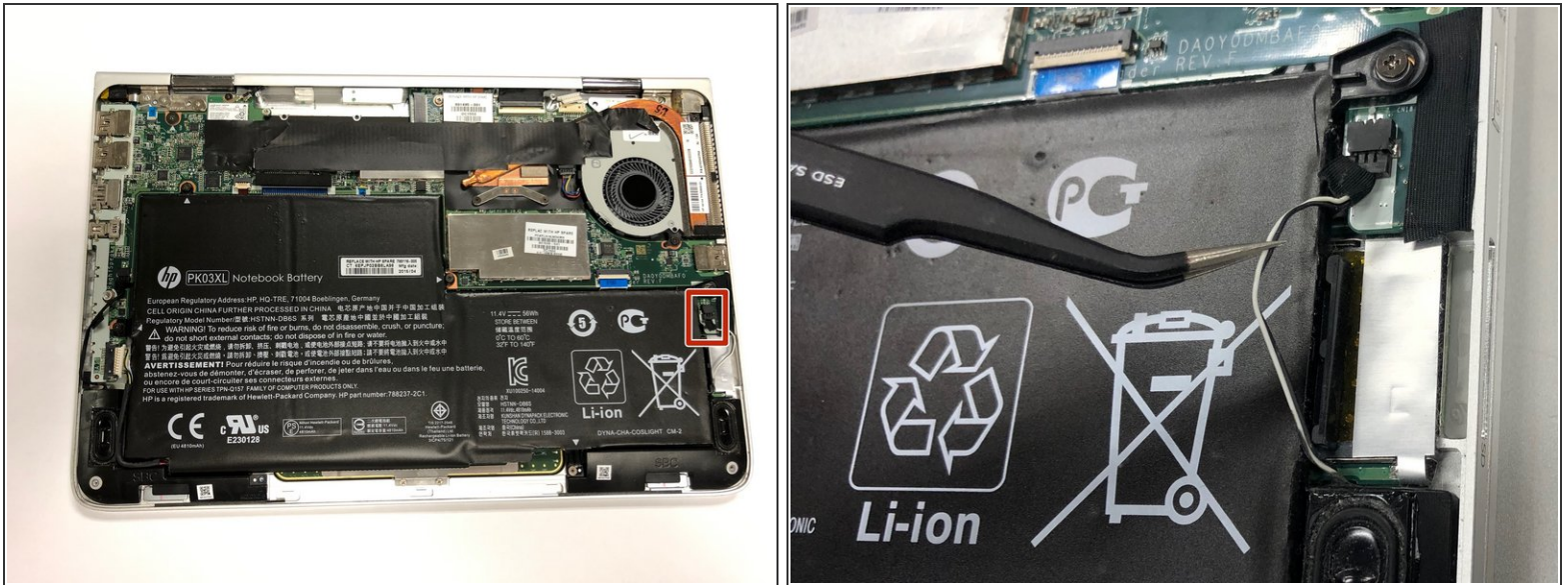
Step 4



⚠ Do not disconnect the cable connector shown in the red box.

- The speaker cable may be attached to the battery with black electrical tape. If so, remove the tape.
- Move the cable clear of the battery.

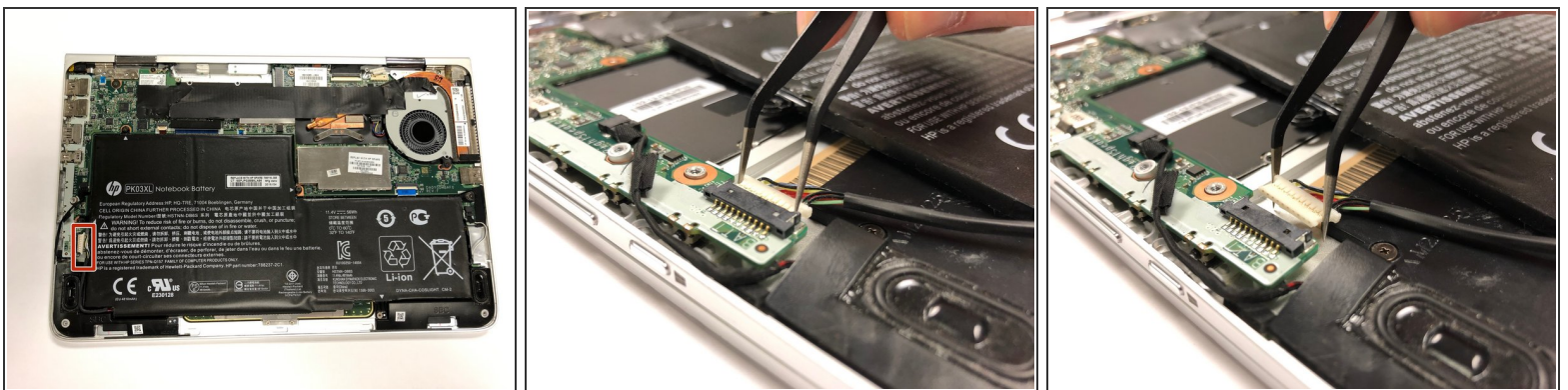
Step 5



⚠ Do not disconnect the cable connector located in the red box.

- Use tweezers to remove the speaker cable from the groove attached to the battery.
- Push the cable to the side so it does not get in the way of the battery removal.

Step 6



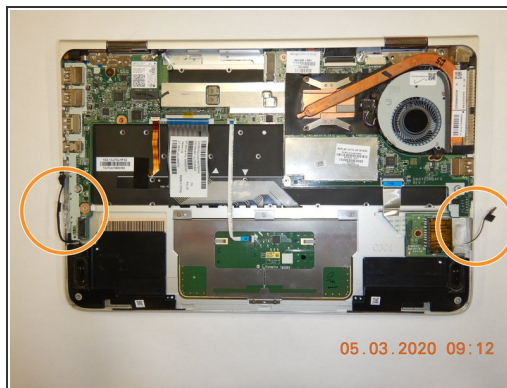
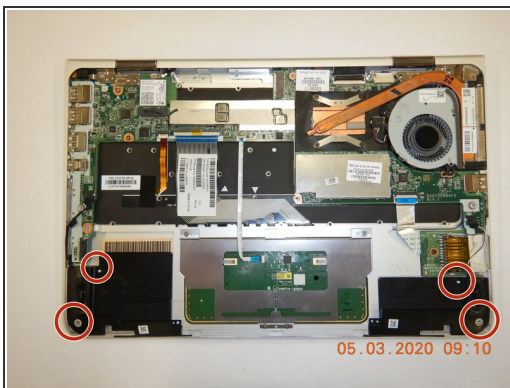
- Disconnect the battery cable connector by sliding it out of the socket.
- ① Move the battery out of the way if you need more room to disconnect the power cable.

Step 7



- Carefully remove the battery.

Step 8 — Speakers



- Remove four screws located on the bottom corners of speaker covers using the Phillips #00 screwdrivers.
- Disconnect both 3-pin cables located on the edge of the computer.
- Remove both speakers.

To reassemble your device, follow these instructions in reverse order.