

Written By: Dillon Wagers



Page 1 of 7

# INTRODUCTION

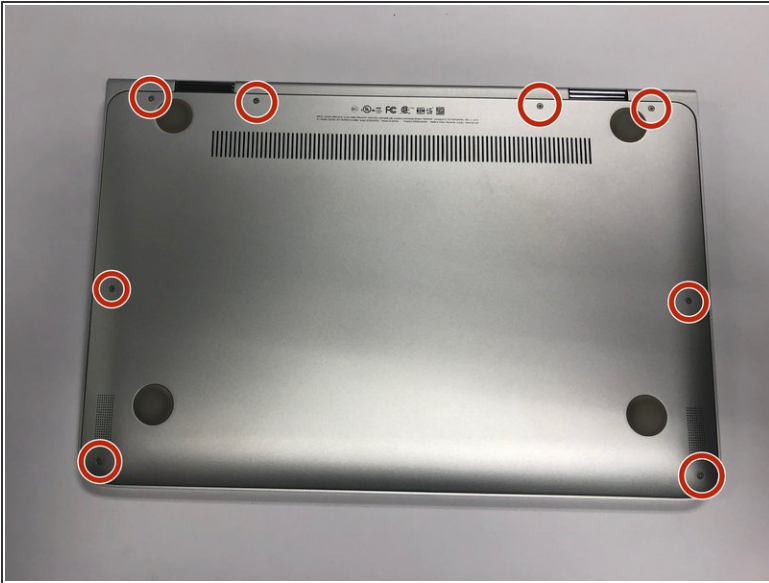
The motherboard is the central hub for communication between all of the components in a device. If one or more components start to fail, your motherboard may need to be replaced. Use this guide to replace the motherboard in your laptop.



## TOOLS:

- [Phillips #000 Screwdriver](#) (1)
  - [T5 Torx Screwdriver](#) (1)
  - [Spudger](#) (1)
  - [Tweezers](#) (1)
  - [Phillips #00 Screwdriver](#) (1)
-

## Step 1 — Bottom Case



- Using the Torx T5 screwdriver, remove the eight 8 mm screws on the bottom case of the laptop.

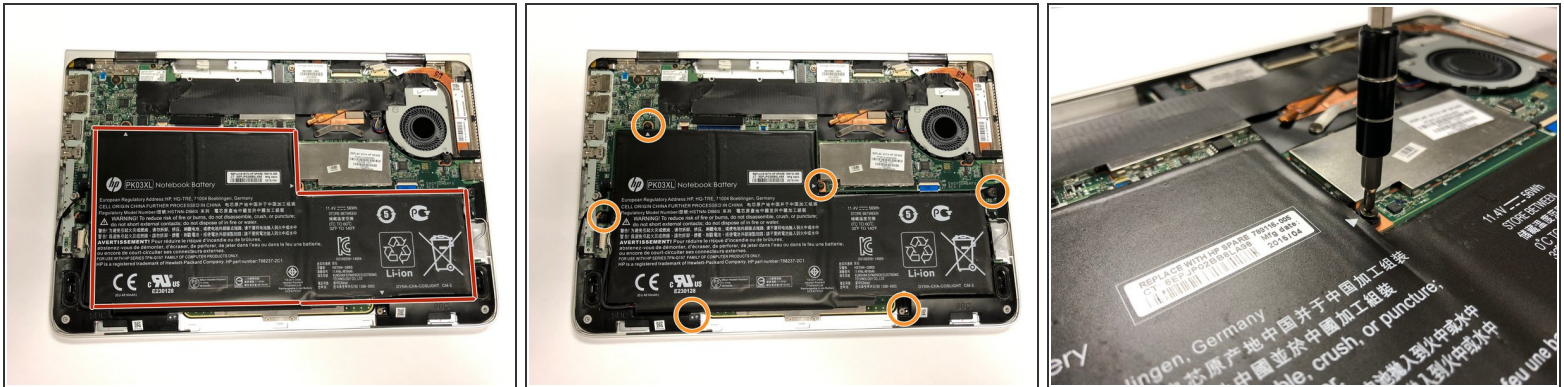
## Step 2



- Pry up one corner of the bottom case with a spudger.
- Work the spudger around the edges, making your way towards the bottom of the laptop.
- Remove the bottom case.

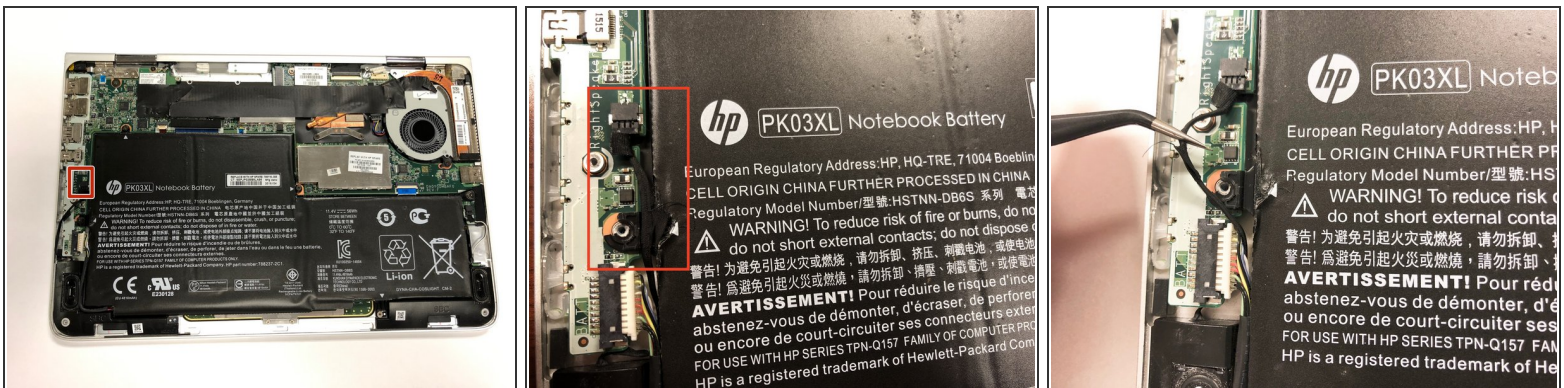


## Step 3 — Battery



- Orient the laptop the same way as the pictures. The battery is bordered in a red outline.
- Remove the six 4 mm screws using a Phillips #000 screwdriver.

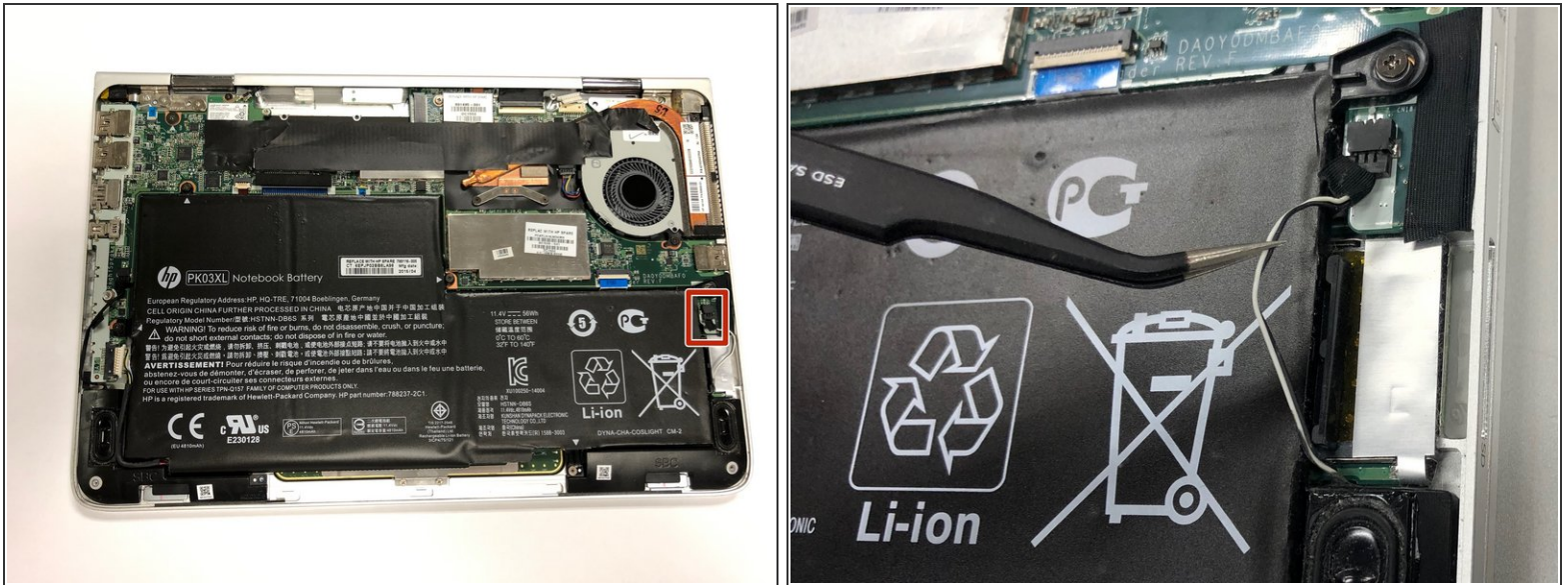
## Step 4



**⚠** Do not disconnect the cable connector shown in the red box.

- The speaker cable may be attached to the battery with black electrical tape. If so, remove the tape.
- Move the cable clear of the battery.

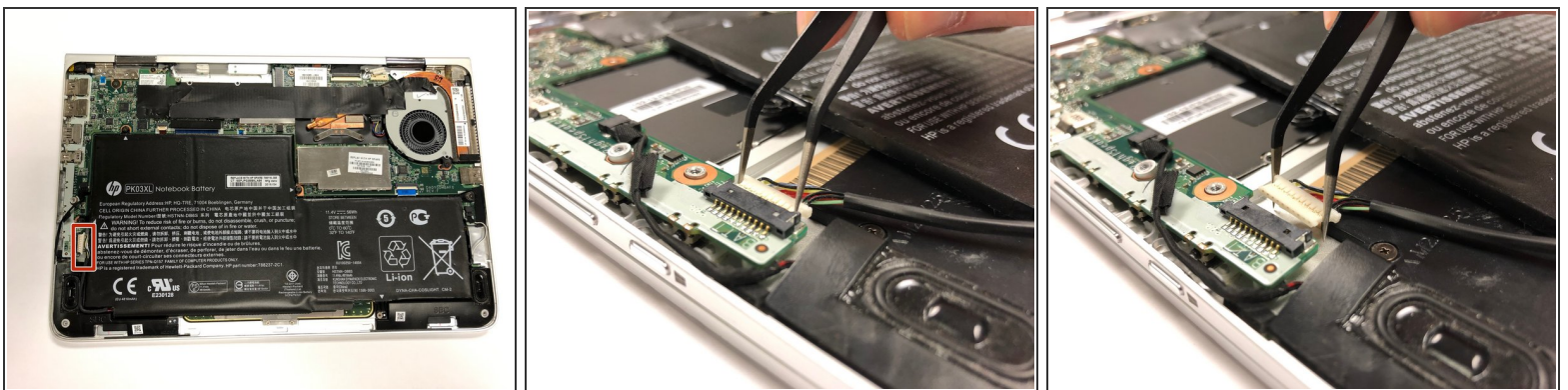
## Step 5



**⚠** Do not disconnect the cable connector located in the red box.

- Use tweezers to remove the speaker cable from the groove attached to the battery.
- Push the cable to the side so it does not get in the way of the battery removal.

## Step 6



- Disconnect the battery cable connector by sliding it out of the socket.
- ① Move the battery out of the way if you need more room to disconnect the power cable.

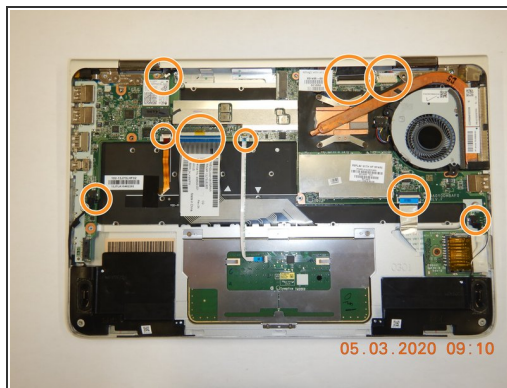
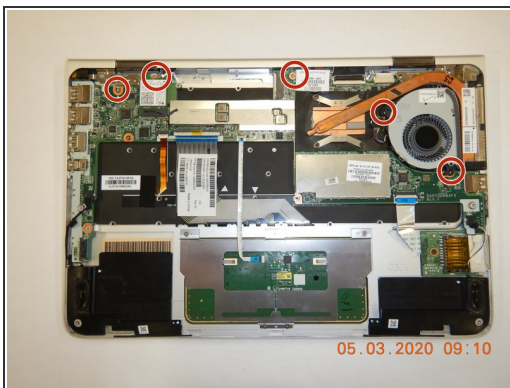


## Step 7



- Carefully remove the battery.

## Step 8 — Motherboard



- Remove the black tape from the motherboard.
  - Remove five screws using the Phillips #00 screwdriver that holds the motherboard in place.
  - Disconnect five ribbon cables, three power cables, and two wifi antennas from the motherboard.
  - Gently lift the motherboard out of the computer. Be careful to not to disturb the CPU fan.
- ⚠ Do not bend the motherboard.

To reassemble your device, follow these instructions in reverse order.