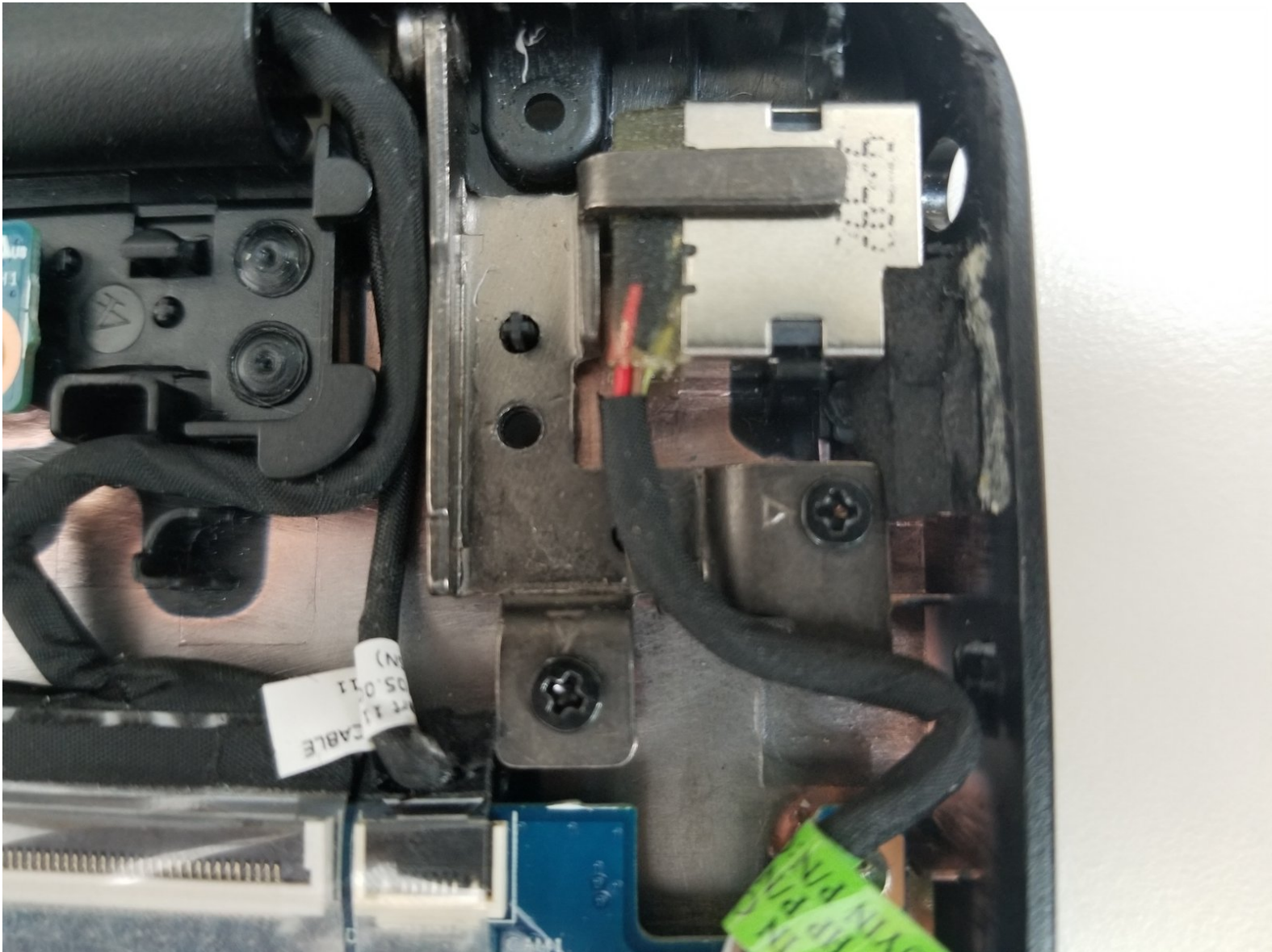




HP Chromebook 11 G5 DC Charging Port Replacement

How to replace an HP Chromebook 11 G5 charging port.

Written By: Salma Zitoun



INTRODUCTION

This is a replacement guide for the HP Chromebook 11 G5 DC charging port. The main purpose of the steps below is to show you how to replace the charging port and what needs to be removed before. This guide is to replace the charging port which is responsible for charging the device. So, if you notice that your device is not charging or if it's charging slowly, then that means that there is an issue with the charging port. For more information about the DC charging port, please make sure you check out our troubleshooting page that includes information about it through this link [visit our troubleshooting page](#).

This process should be done very carefully because the charging port is attached to other parts of the device. So, before removing the DC port there will be several wires that will need to be disconnected. If these steps are followed carefully and correctly the DC charging port should be replaced easily with no complications.



TOOLS:

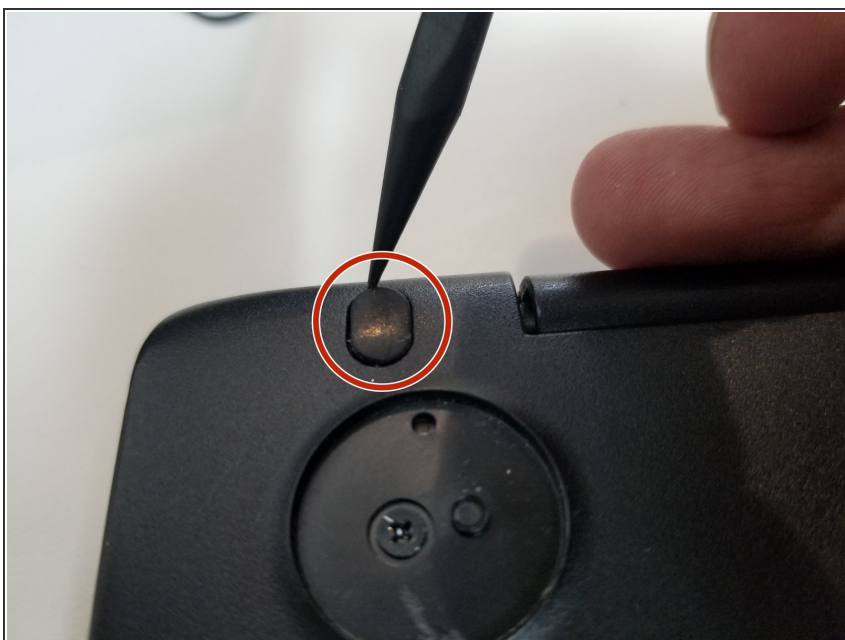
- [Spudger](#) (1)
 - [Metal Spudger](#) (1)
 - [Phillips #00 Screwdriver](#) (1)
-

Step 1 — Keyboard



- Remove four large rubber pads from the bottom of the device to reveal screws using the pointed end of a spudger.

Step 2



- Remove two smaller rubber pads from the bottom of the device to reveal screws using the pointed end of a spudger.

Step 3



- Remove the 4mm eleven screws using a Phillips #00 screwdriver.

Step 4



- Flip the device upright and open the screen as far back as possible.

Step 5



- Wedge the flat-end of a metal spudger between the base of the device and the keyboard assembly while applying downward pressure. Slide the spudger across the entirety of the gap until the two components separate.

ⓘ There will be audible popping sounds caused by the separation of the base of the device and the keyboard assembly as you wedge them apart.

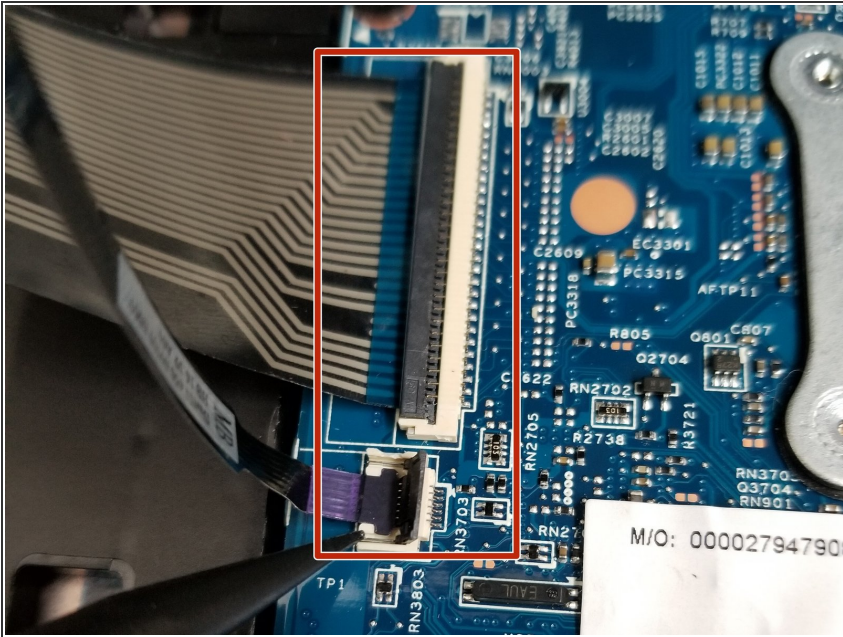
⚠ Do not insert the spudger into the gap deeper than necessary as it may snag on the internal components.

Step 6



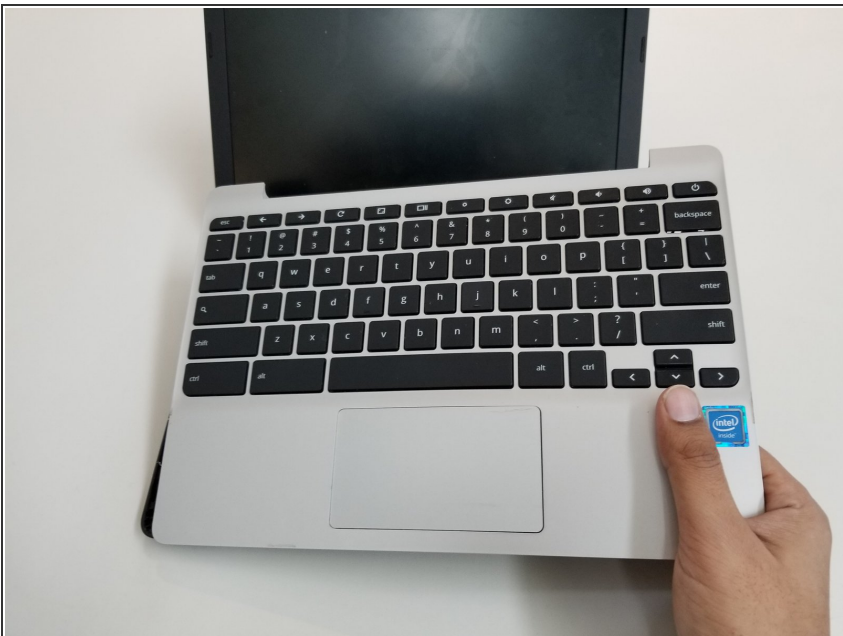
- Gently lift the keyboard assembly slightly above the base of the device.

Step 7



- Disconnect the two ribbon cables connected to the motherboard by using the pointed end of a spudger to lift the plastic connector lids to allow the ribbon cables to be gently removed by hand.

Step 8



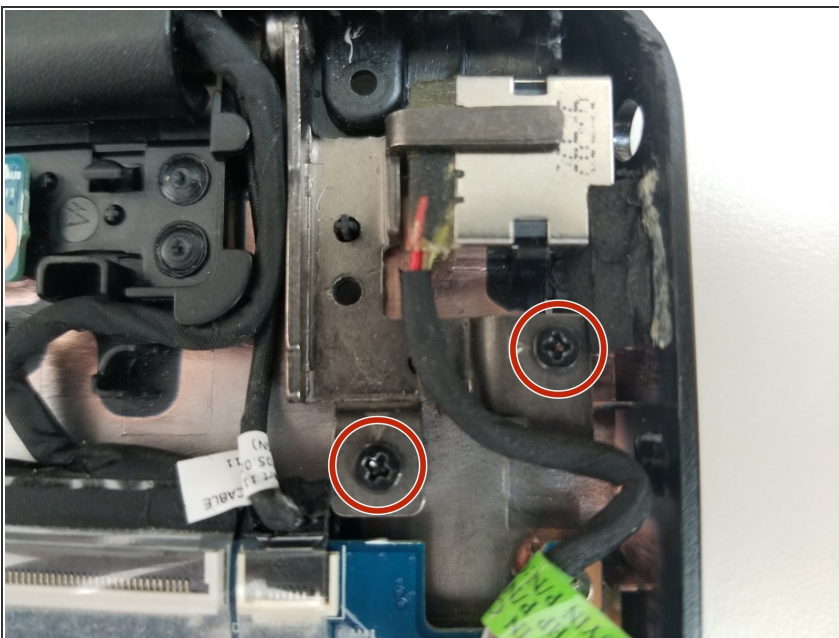
- Gently remove the keyboard assembly by hand from the base of the device.

Step 9 — DC Charging Port



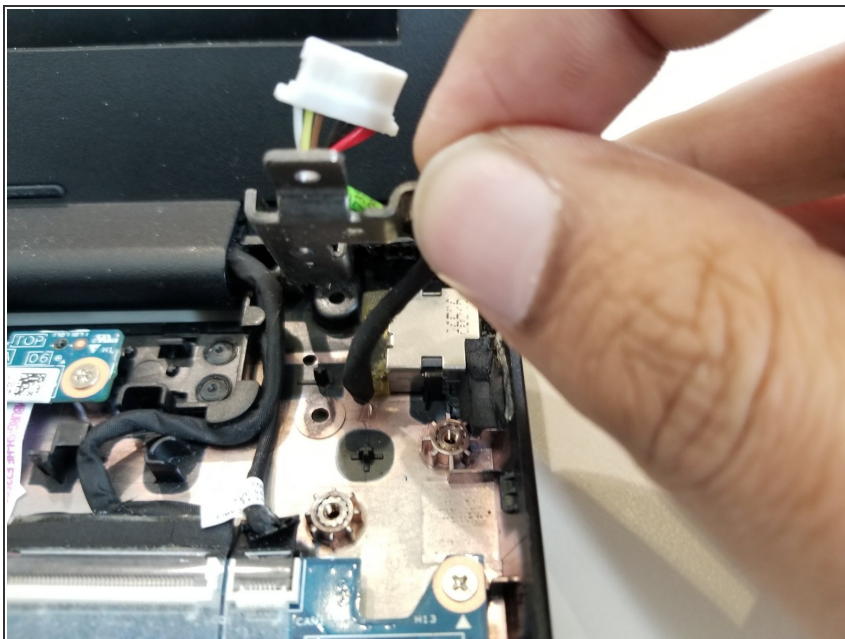
- Disconnect the charging port cable from the motherboard using your finger or a spudger and gently pull it off.

Step 10



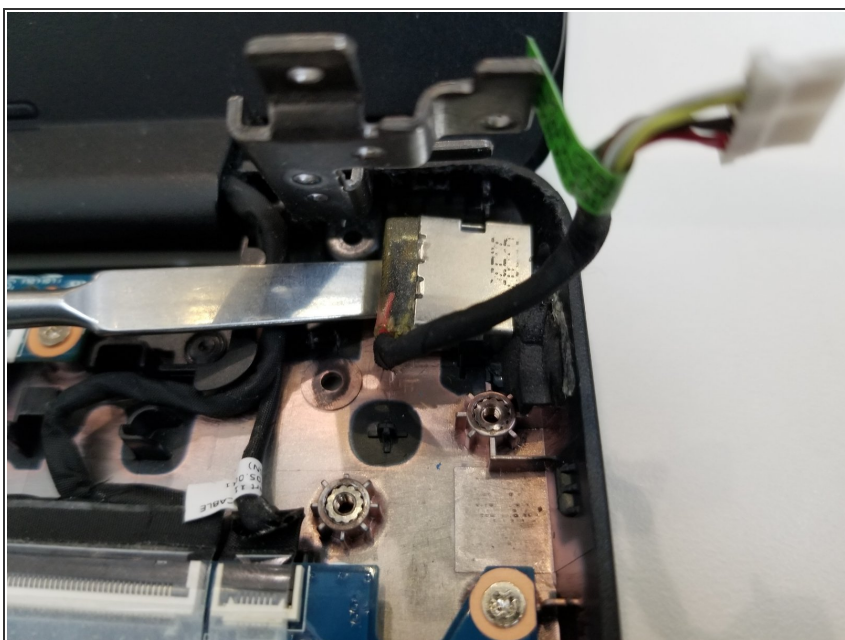
- Remove the two screws from the hinge of the device using a Phillips #00 screwdriver.
- Carefully lift the hinge up.

Step 11



- Carefully lift the charging port cable with the hinge up to remove the DC charging port.

Step 12



- Carefully remove the DC charging port from the base using a spudger.

To reassemble your device, follow these instructions in reverse order.