



# HP Envy x360 15m-cn0012dx Battery Replacement

A guide to replace the HP Envy x360 M Convertible battery.

Written By: Vaughn Hess Jr



## INTRODUCTION

If your HP Envy x360 m Convertible (Model 15m-cn0012dx) isn't holding a charge or won't charge, use this guide to replace the battery.

A faulty battery does not charge the computer or does not hold a charge for long. If the battery is dead, the computer might not even turn on.

Before starting, make sure all external connections are unplugged and the computer is turned off.



### TOOLS:

- [iFixit Opening Tool](#) (1)
- [iFixit Opening Picks \(Set of 6\)](#) (1)
- [Phillips #0 Screwdriver](#) (1)



### PARTS:

- [HP LK03XL Battery](#) (1)

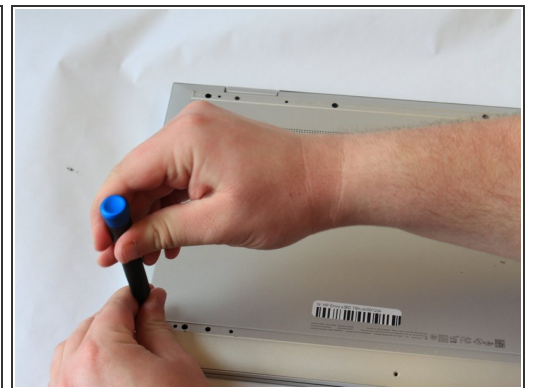
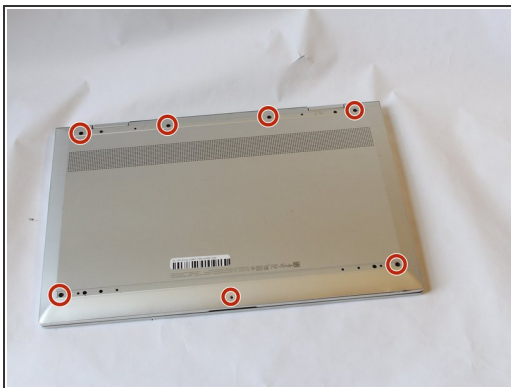
## Step 1 — Battery



**⚠** Make sure the computer is turned off, and remove all cables.

- Set the laptop face down.
- Peel back the grey screw guards, along the top and bottom edge of the back case. It may be helpful to use a spudger to get started.
- ⓘ Peel slowly to avoid tearing the rubber covers.

## Step 2



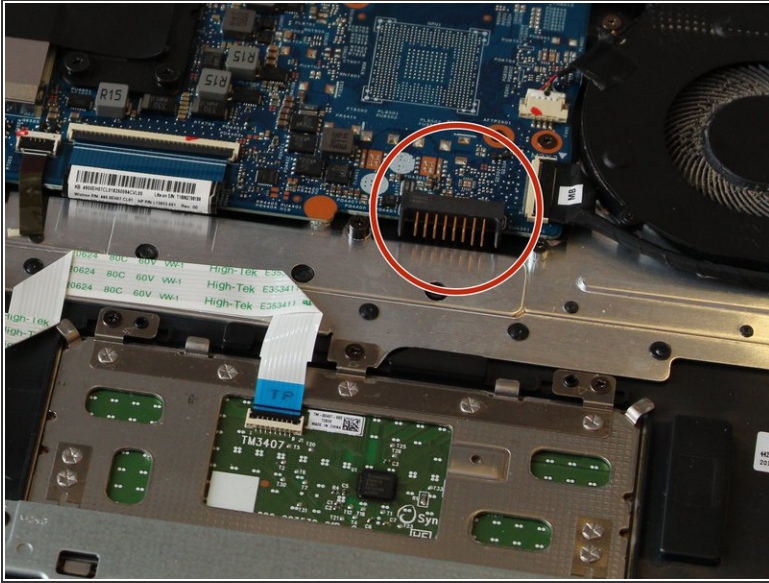
- Using the Phillips #0 screwdriver, remove the seven 5mm screws from the back case.

## Step 3



- Pry open the seam of the back cover using the iFixit Opening Tool.
- While using the tool, place a pick at each corner of the computer (be careful and do it slowly).
- Once all the corners are slightly lifted, carefully pop off the back cover.

## Step 4



- i** The battery rests above the trackpad and connects to the black port with the gold pins at the bottom right corner of the motherboard.
- Remove the screws around the perimeter of the battery holding it down with a Phillips #0 screwdriver.
  - Disconnect the battery cable from the motherboard.
  - Remove the battery by lifting it out of the laptop case.

To reassemble your device, follow these instructions in reverse order.