



HP Envy m6-1225dx Optical Drive Replacement

How to remove and replace the Optical Drive in an HP Envy m6-1225dx.

Written By: Lucas Nelson



INTRODUCTION

DVD RW Double-Layer with SuperMulti drive. Part Number 686916-001

Also known as a DVD player, the optical drive allows the user to play DVD's or CD's. This Optical drive also allows the user to create/burn new DVD's and CD's.

The Optical Drive can suffer hardware issues which might prevent it from reading DVD's. You can run a HP PC Hardware Diagnostics test at [Support.hp.com](https://support.hp.com). If the diagnostic test is unable to find the problem, the Optical Drive itself could be faulty.

This guide will explain how to remove the Optical Drive for replacement.

Check out the [Troubleshooting](#) guide for other issues that could be related to the optical drive.



TOOLS:

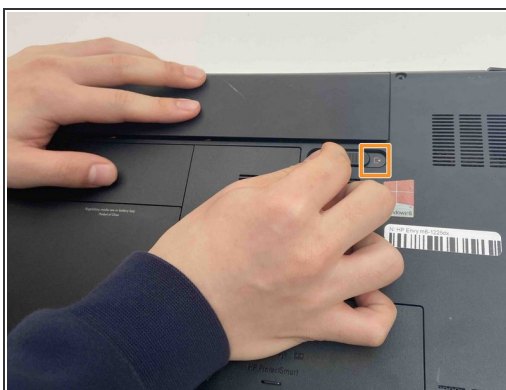
- [Phillips #1 Screwdriver](#) (1)
 - [Spudger](#) (1)
-

Step 1 — Optical Drive



- Flip the laptop over onto its top with the back facing you

Step 2



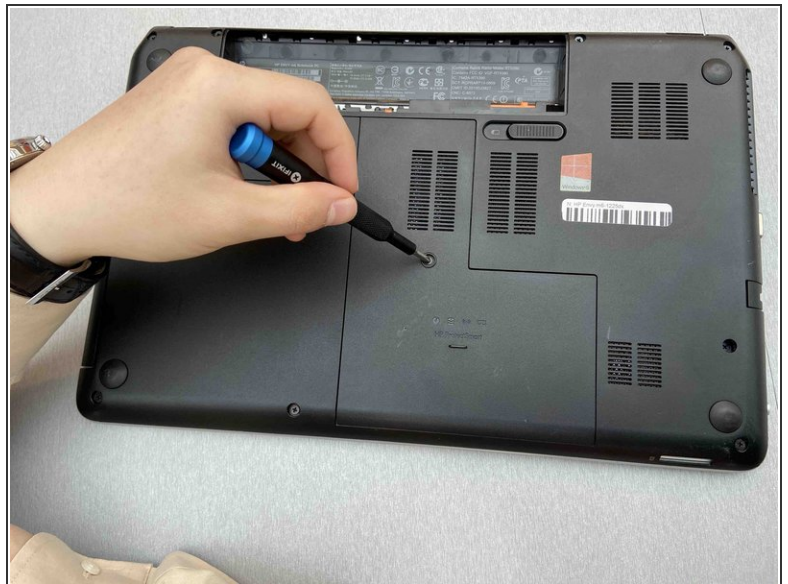
- Pull the slide release tab to the left to free the battery.
- Once the slide release is all the way over, a red icon should be visible.
- ⓘ As you pull the tab, the bottom edge of the battery should start to come up.

Step 3



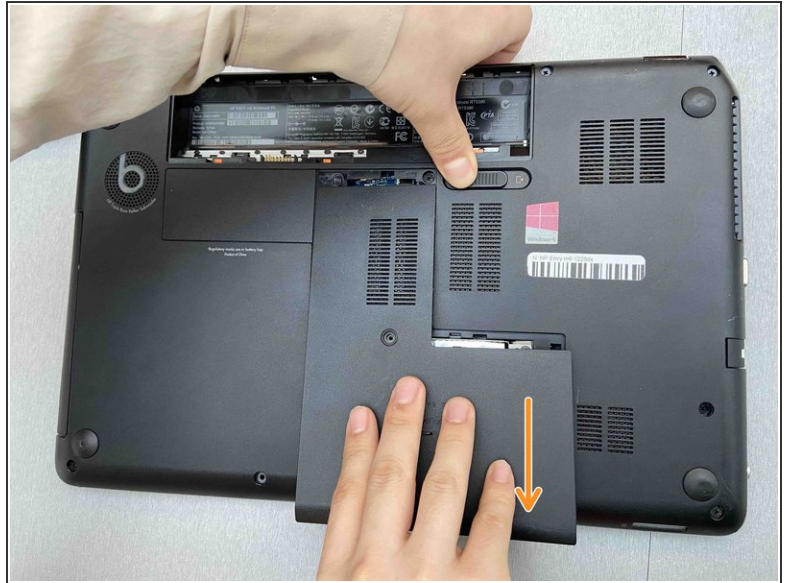
- Remove the battery

Step 4



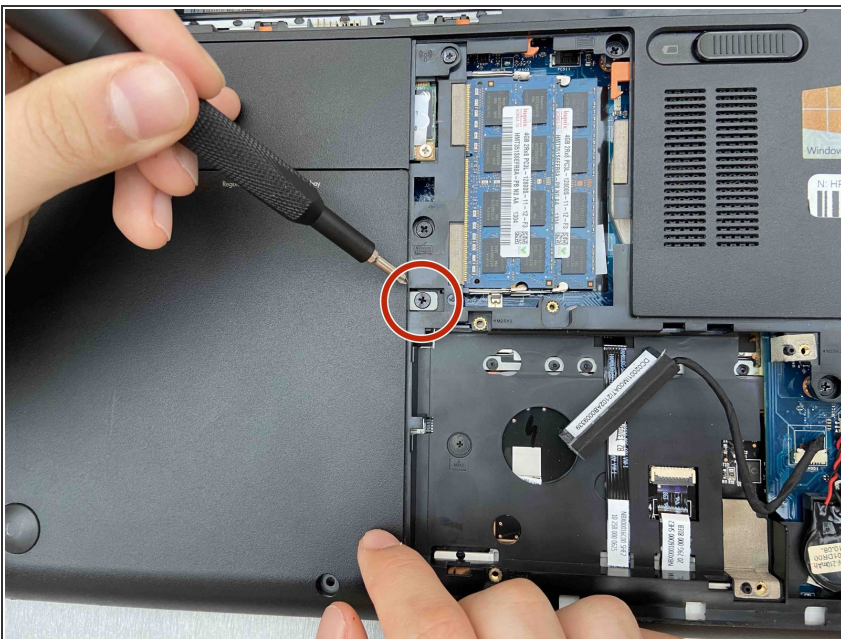
- Remove the center screw using a Phillips #1 screwdriver.

Step 5



- Move the battery slide release latch to the side while pulling the service cover forward.
- Pull the service cover straight up and out to remove.

Step 6



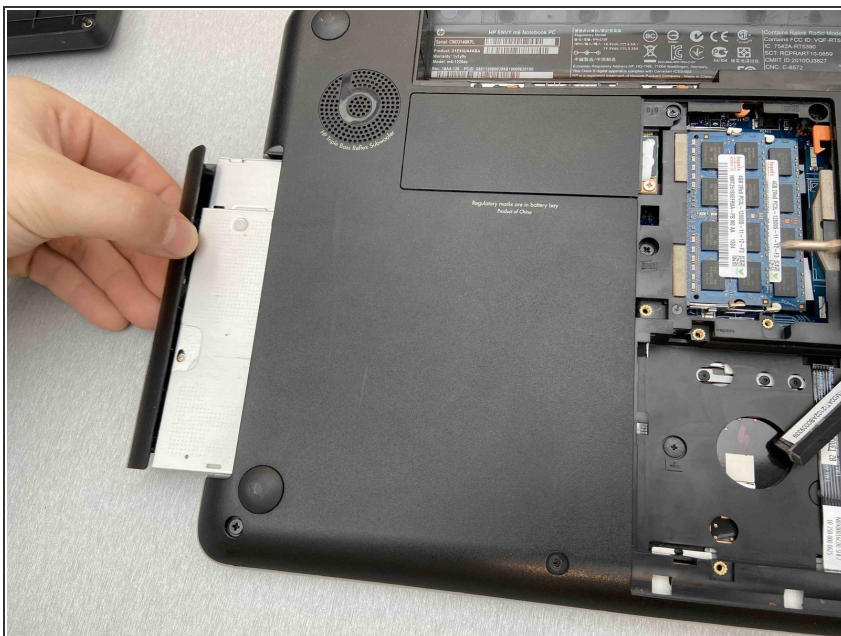
- Use a Phillips #1 screwdriver to remove the single screw holding the optical drive

Step 7



- Use a spudger to apply pressure to the tab, while simultaneously pulling out the optical drive.
- ⓘ While the images show the tab being pushed out with a screwdriver, we recommend using an ESD-safe instrument instead!

Step 8



- Pull the optical drive out of the base of the laptop.

To reassemble your device, follow these instructions in reverse order.