



ZTE Prestige 2 Back Camera Replacement

This guide will help you replace the back camera in your ZTE Prestige 2.

Written By: Maria Stock



INTRODUCTION

This guide will help you replace the back camera in your ZTE Prestige 2. Before you start, check out our [troubleshooting page](#) that will help you decipher any basic problems before taking your device apart. Some reasons you may need to conduct this replacement is because the back camera may be scratched and/or cracked, therefore, making pictures blurry or spotting. Before beginning, make sure to power off your device completely and disconnect from any external power source.



TOOLS:

- [iFixit Opening Tool](#) (1)
 - [1 x Opening Picks](#) (1)
 - [Phillips #00 Screwdriver](#) (1)
-

Step 1 — Battery



- Use the iFixit opening tool to open up the device by wedging the tool under the back case and popping it open.

Step 2



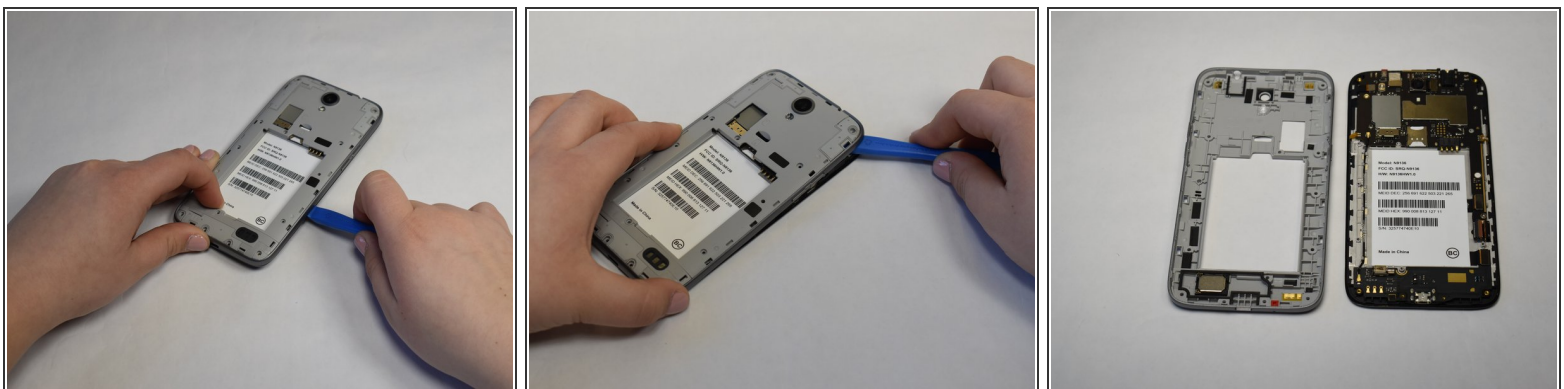
- Remove the battery.

Step 3 — Back Panel



- Use a Phillips #00 screwdriver to unscrew all 12 of the 3 mm Phillips screws located along the edges of the device's back panel, as well as the blue 3mm Phillips screw labeled "ZTE" located towards the top right.

Step 4



- Then use the iFixit opening tool and wedge it under the grey back panel and pop it off.

i There will be a lot of resistance, apply adequate pressure.

Step 5 — Back Camera



- Use the iFixit opening pick and wedge it under the press fit connector beside the camera located at the top center of the device to pop it off.
 - Remove the camera.
- ⚠ The camera cable near the press fit connector is delicate, ripping it will cause permanent damage.
- ⓘ The base of the camera may be glued down which may lead to accidental ripping during removal. Use the flat end of a metal spudger to pry it up if necessary.

To reassemble your device, follow these instructions in reverse order.