



Motorola Moto G7 Plus Screen Replacement

If you want to perform advanced repairs on the...

Written By: Xander Wallace



INTRODUCTION

If you want to perform advanced repairs on the Motorola Moto G7 Plus (model XT1965), you will likely need to remove the screen first. This guide will show you how to quickly and easily do so. If additionally you want to replace the screen, follow the steps of this guide in reverse using a new screen and adhesive as necessary.

Before you begin, download the [Rescue and Smart Assistant](#) app to backup your device and diagnose whether your problem is software or hardware related.

If you are removing a shattered screen, applying force may cause glass shards to pop off. Be gentle and, if necessary, use eye protection.

There are some required tools that are listed below. Ensure the phone is turned off before beginning.



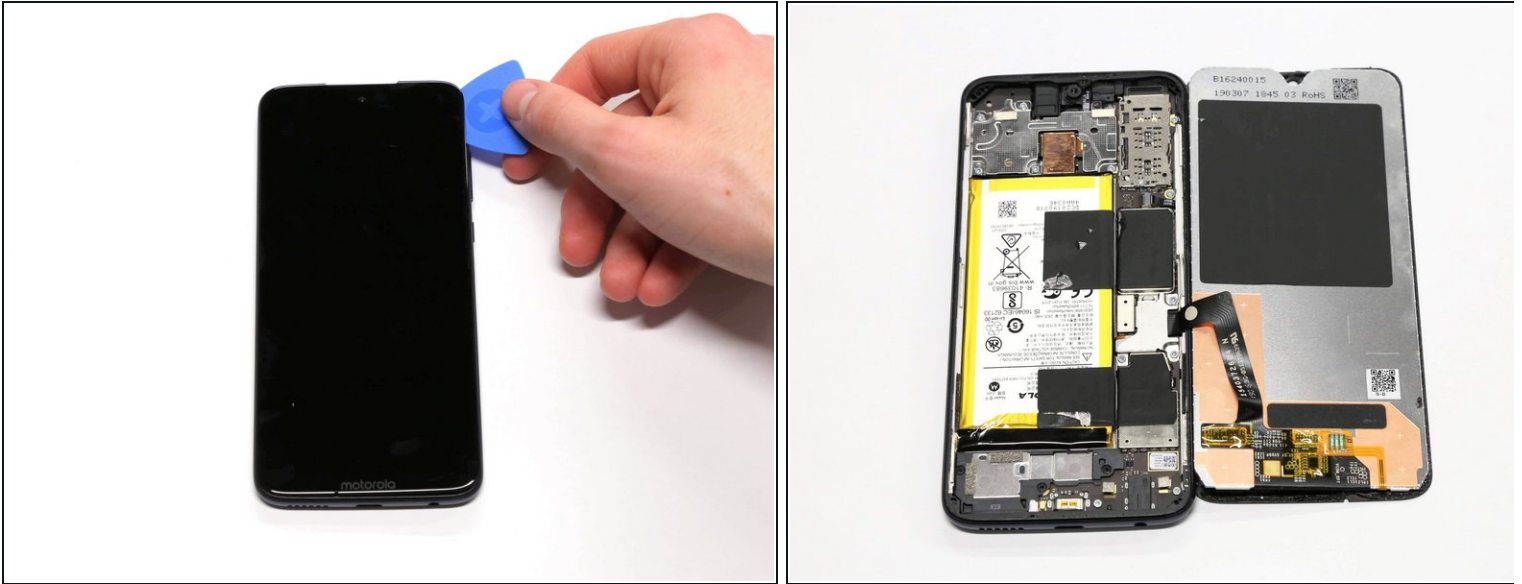
TOOLS:

[iFixit Opening Picks \(Set of 6\)](#) (1)

[T5 Torx Screwdriver](#) (1)

[Spudger](#) (1)

Step 1 — Remove the Screen

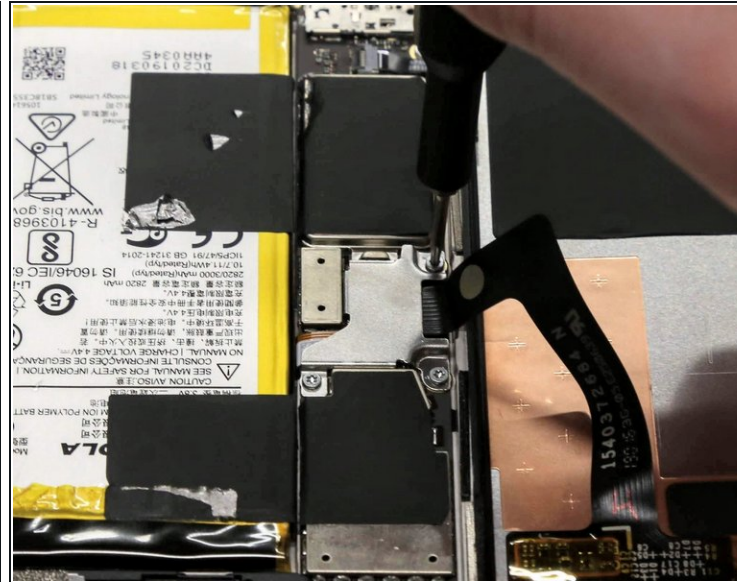
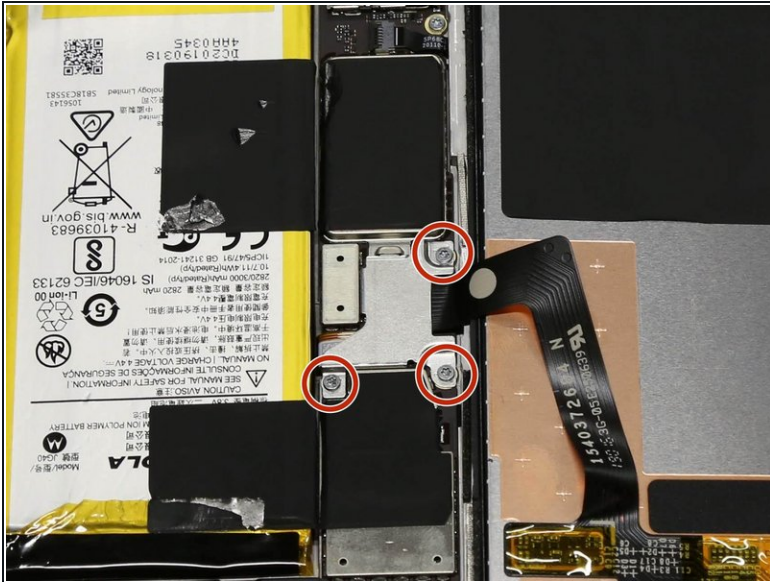


- Insert an opening tool pick under the screen, starting at the top of the phone.
- Slide the pick around the entire perimeter of the display to break the adhesive.

⚠ There is a cable on the right side of the phone (the side with the volume buttons), which connects the screen to the rest of the phone. Be careful not to damage this cable.

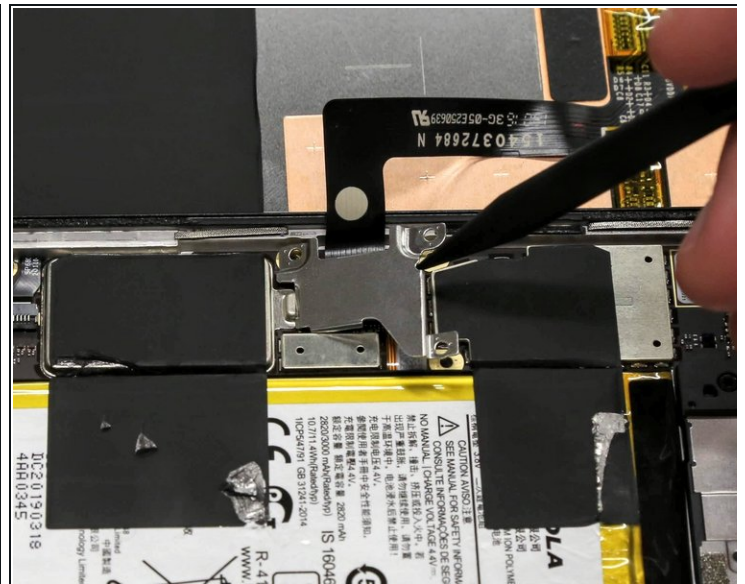
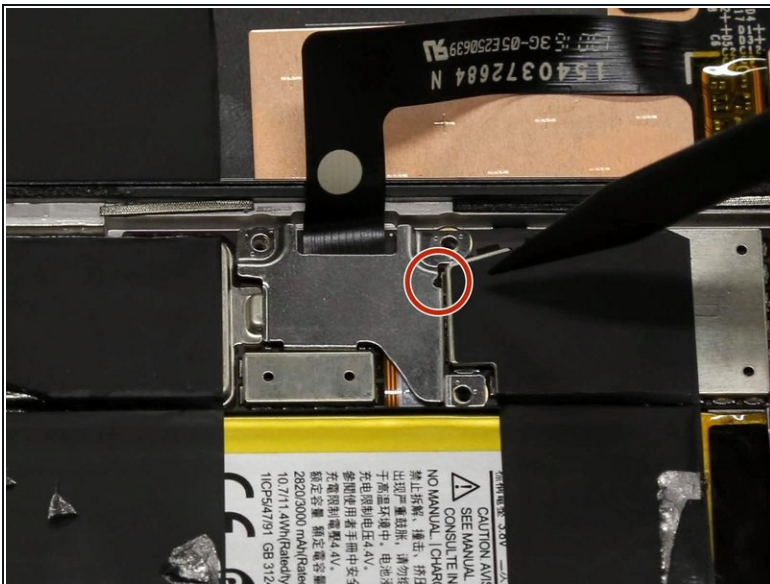
- Once enough adhesive has been removed, you should be able to separate the screen by gently lifting it from the left side of the phone.
- ⓘ While not necessary, applying a gentle heat to the edges of the display with a heat gun or iOpener will weaken the adhesive.

Step 2 — Remove the Display Cable Cover



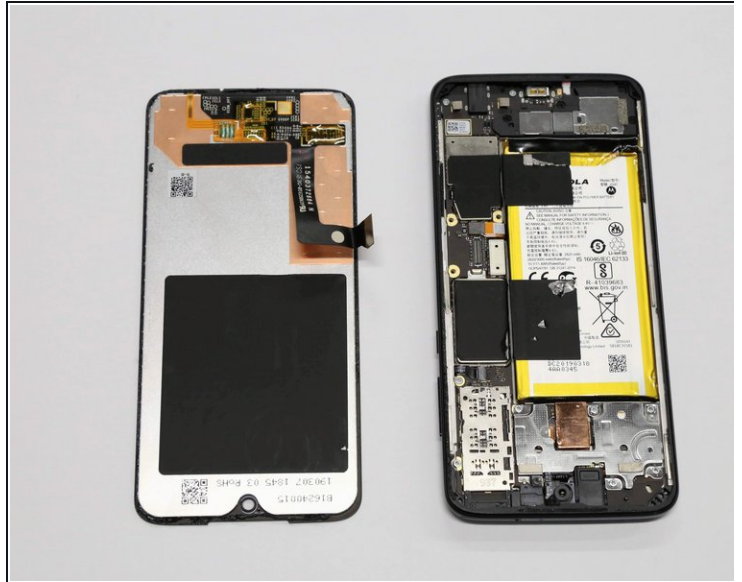
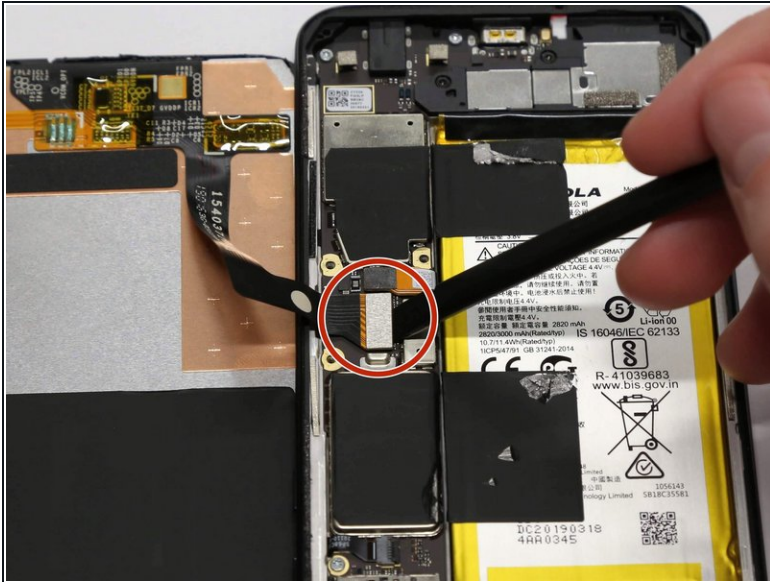
- Remove the three 2.7 mm screws that surround the base of the display cable using the Torx T5 screwdriver.
- Gently remove the metal piece that covers the base of the display cable.

Step 3



- Use the pointed end of the spudger to lift the metal casing where circled.

Step 4 — Separate the Display From the Phone



- Underneath this metal piece is the base of the cable. Use a spudger to vertically lift the connection out of its port.

To reassemble your device, follow these instructions in reverse order.