



# How to Fix an Unwinding Tape Measure

The following guide is intended to help if a tape measure is not retracting as easily or as smooth as it should.

Written By: Lorena Sanabria



---

## INTRODUCTION

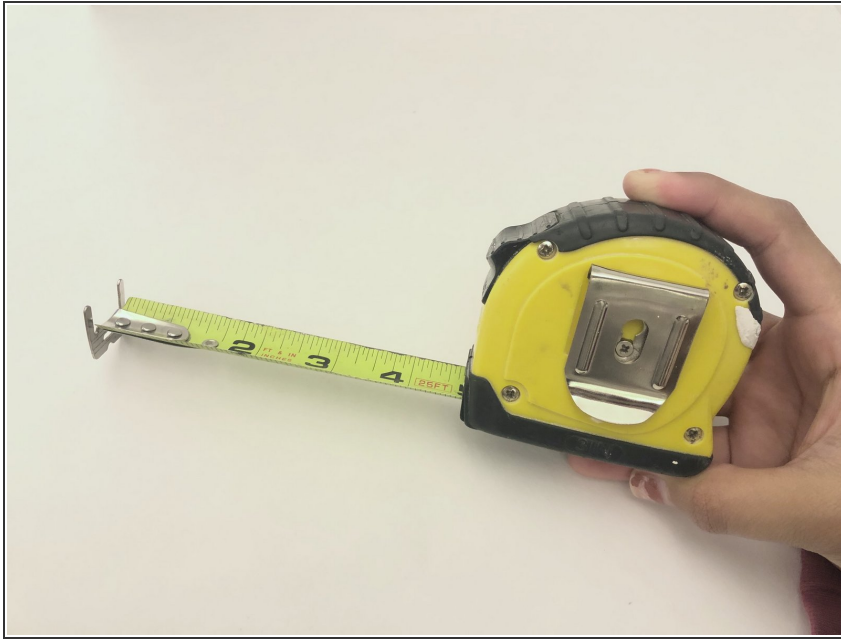
Use this guide to fix a non-retracting tape measure so that it retracts smoothly and on its own. The tape measure being fixed in this guide is the Ace 1in x 25ft Tape Rule. However, this guide should apply to any measuring tape needed. This guide requires a screwdriver to remove the screws depending on which kind of different screws tape measures may have. The purpose of this guide and why you should follow it is to make your tape measure retract smoother, faster and easier.



### TOOLS:

- [Phillips #1 Screwdriver](#) (1)
-

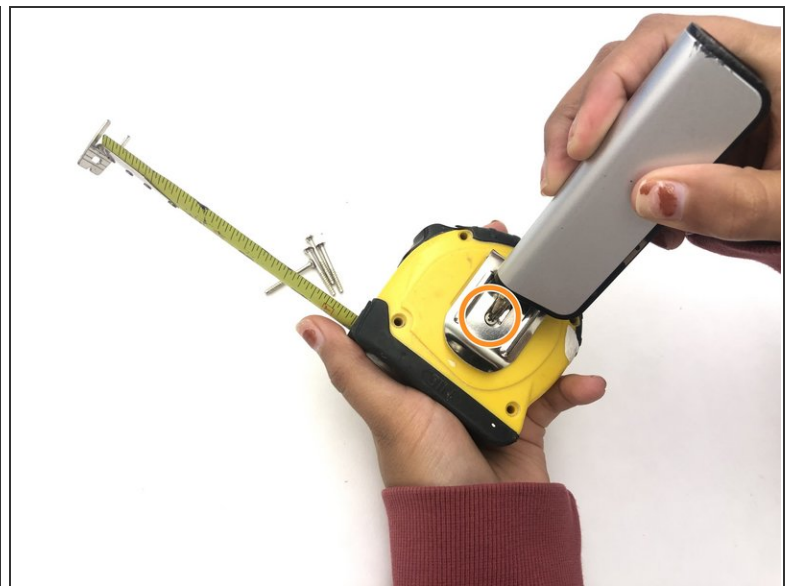
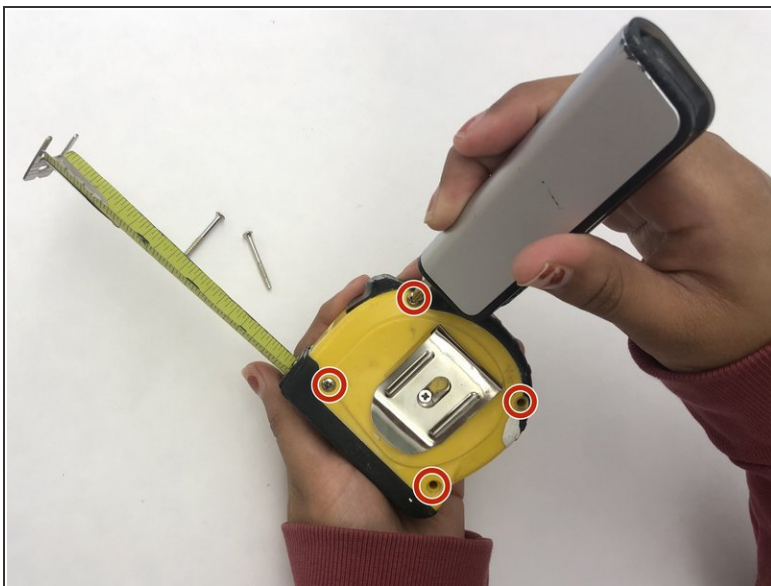
## Step 1 — How to Fix an Unwinding Tape Measure



- Grab your broken tape measure and inspect so that it doesn't retract.

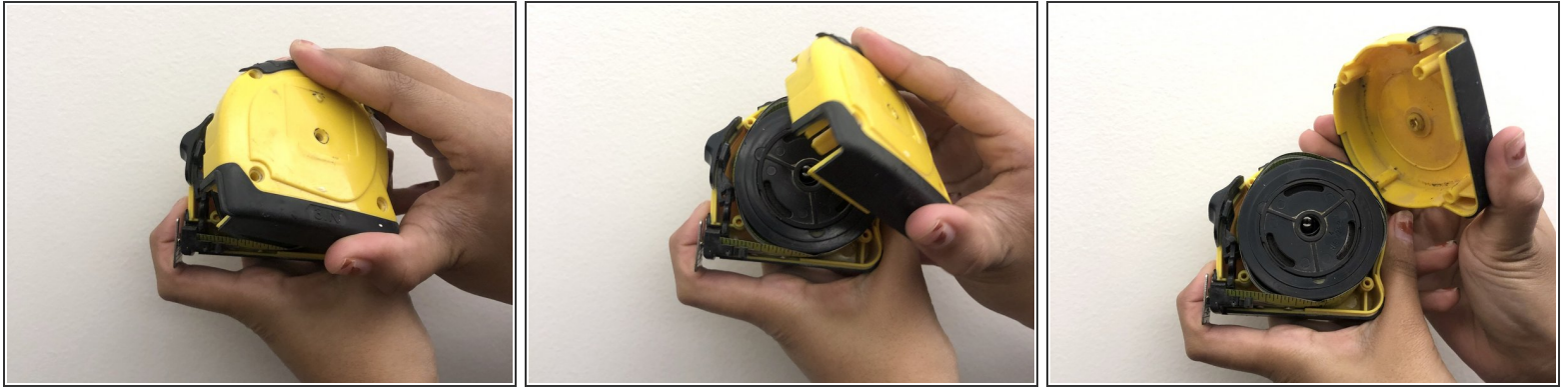
☒ Make sure it is not locked.

## Step 2



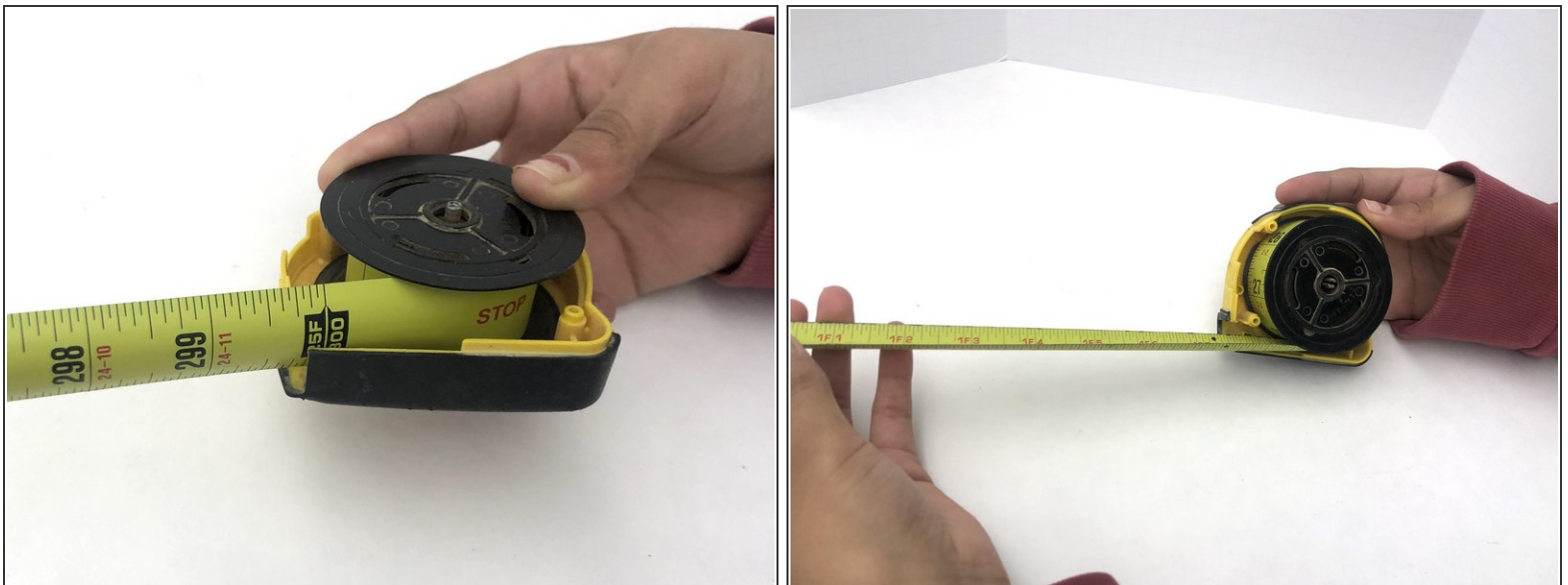
- Remove the four 3mm Phillips #1 screws on the case around the clip.
- Remove the 3mm Phillips #1 screw from the center of the clip.

### Step 3



- Separate the two halves of the case by pulling them apart.

### Step 4



- Begin unwinding your tape measure until you get to the end of the tape.

**⚠ Remember to be careful when retracting so that the spring doesn't come out or you hurt someone when the whole tape is out.**

## Step 5



- When the whole tape is out, slowly begin rolling it back in.
- Roll it back in keeping your thumb firmly pressed on the wheel so that it goes back in smoothly and won't come out.
- Once you start reaching the end, keep the tape straight with your thumb so that it retracts with no inconveniences.

## Step 6



- Once you have rolled the tape in again, place the top back on making sure the tape doesn't come out or roll out by itself.

**⚠ Remember to keep your thumb on the wheel as you put on the top so that it doesn't come out and hurt anyone!**

## Step 7



- Begin placing the screws back in to their respective places and screwing them back in tightly.
- Do this as you apply pressure on the top so that no parts come out.

## Step 8



- Once your screws are back on, check your tape measure to see if it works properly or not.
- If it isn't working the way you wanted to, repeat steps 2-7.

To reassemble your device, follow these instructions in reverse order.