



# Xbox Thomson DVD Drive Disassembly

Disassembly steps for Xbox Thompson DVD Drive

Written By: Navy Vet 2015





## TOOLS:

- [Metal Spudger](#) (1)
- [T15 Torx Screwdriver](#) (1)
- [T20 Torx Screwdriver](#) (1)
- [T10 Torx Screwdriver](#) (1)
- [Phillips #1 Screwdriver](#) (1)
- [White Lithium Grease](#) (1)



## PARTS:

- [Drive Belt](#) (1)

## Step 1 — Hard Drive



- ★ Make sure your Xbox is safely unplugged and is laying on a flat, stable surface.

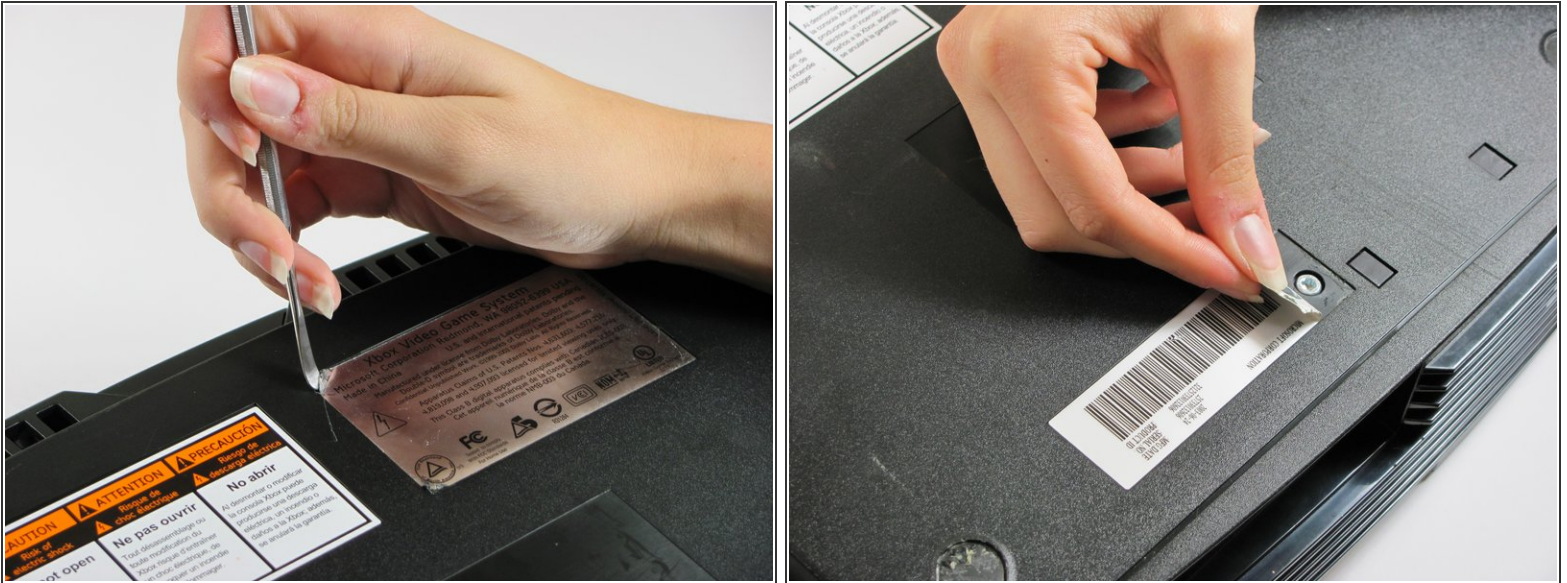
## Step 2



- i Turn the Xbox over to reveal the four rubber feet.
- Use a metal spudger to pry off the four rubber feet.



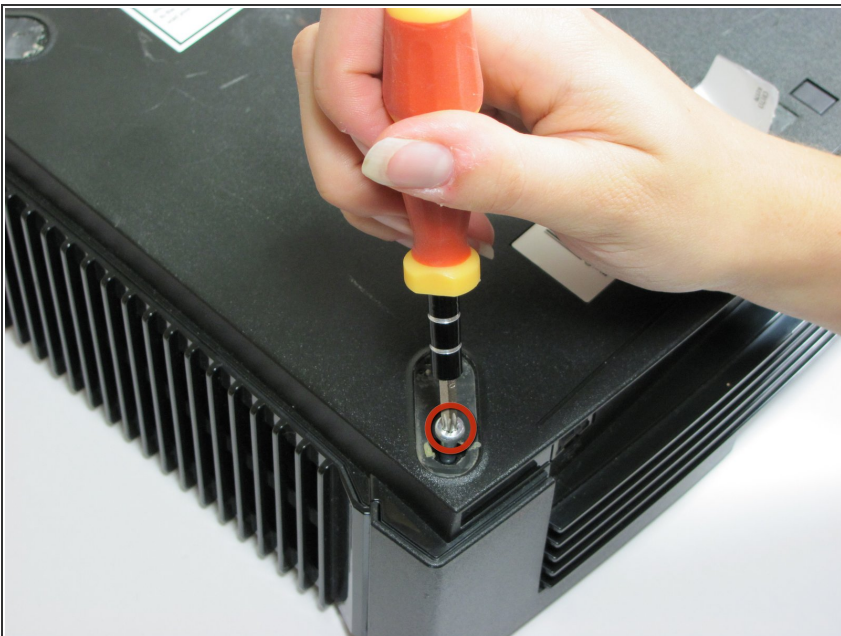
## Step 3



✦ There are 2 more screws hidden under the two labels on the bottom of the case.

- You can either remove the labels or simply feel for the screw holes through the labels and then cut or punch a hole through them.

## Step 4



- Remove the six T20 Torx screws securing the top cover to the bottom cover.

## Step 5



- Once the bottom and top shells are no longer attached, carefully turn the Xbox right-side-up, lift and remove the top cover.

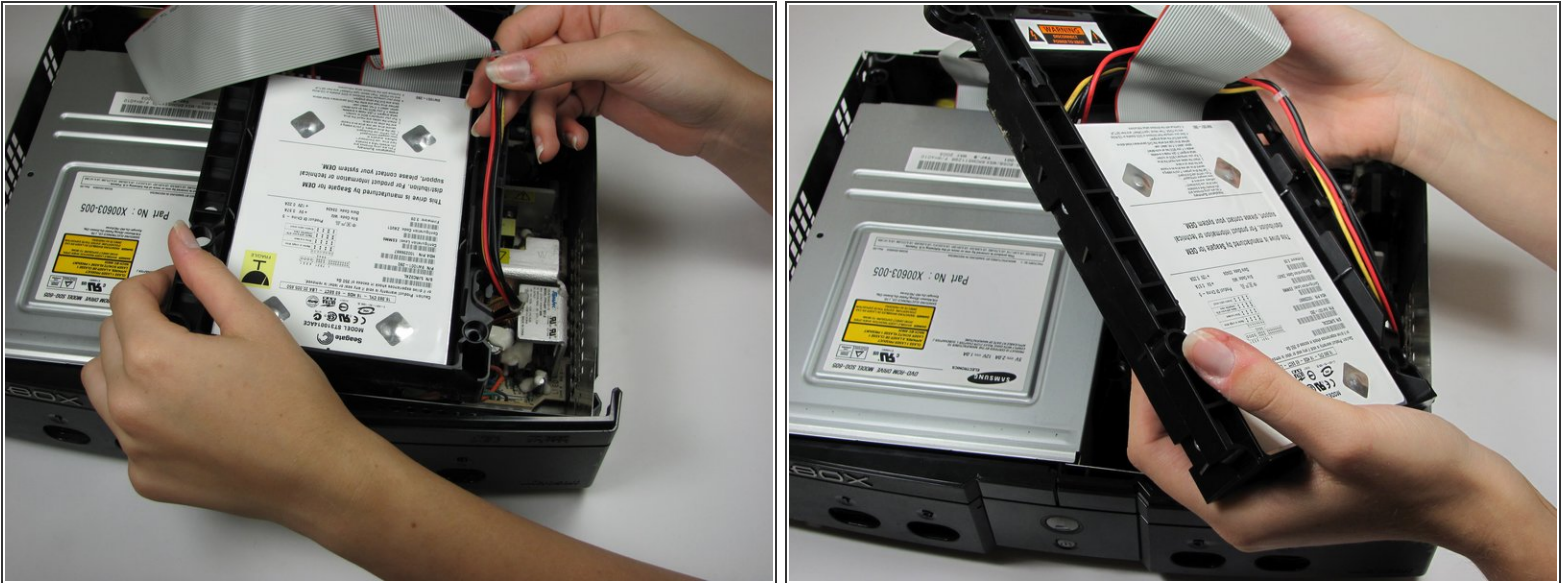
## Step 6



- Remove the three 3 mm T10 screws securing the hard drive to the Xbox.
- ✦ There is one screw on the rear left side of the hard drive that is only visible when the IDE ribbon cable is lifted up. The other two are at the front right and left sides of the hard drive.
- ⓘ The screw on the lower left corner of the disk drive is not in the hole that it appears to be in, but rather just closer to the corner.

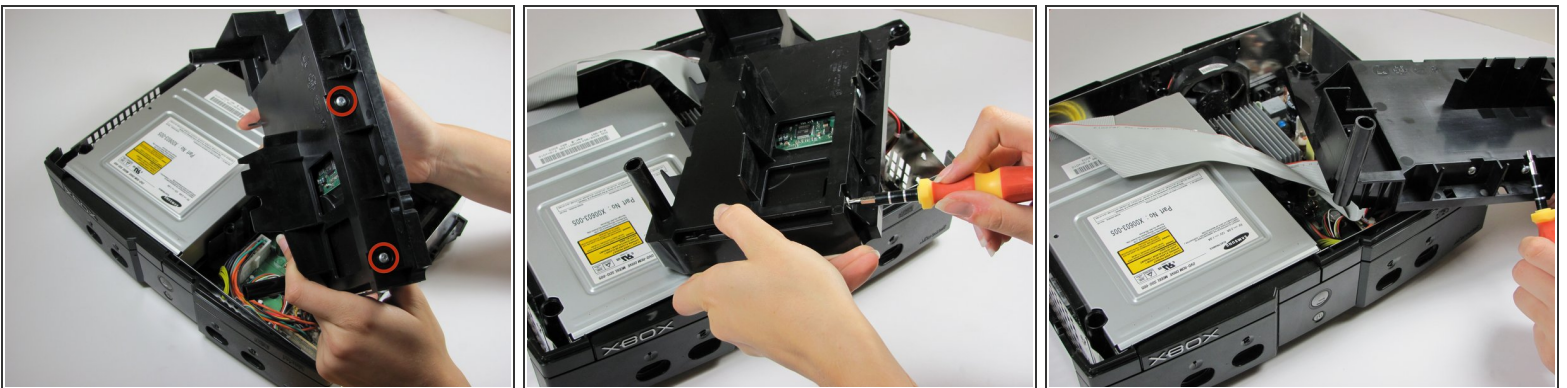


## Step 7



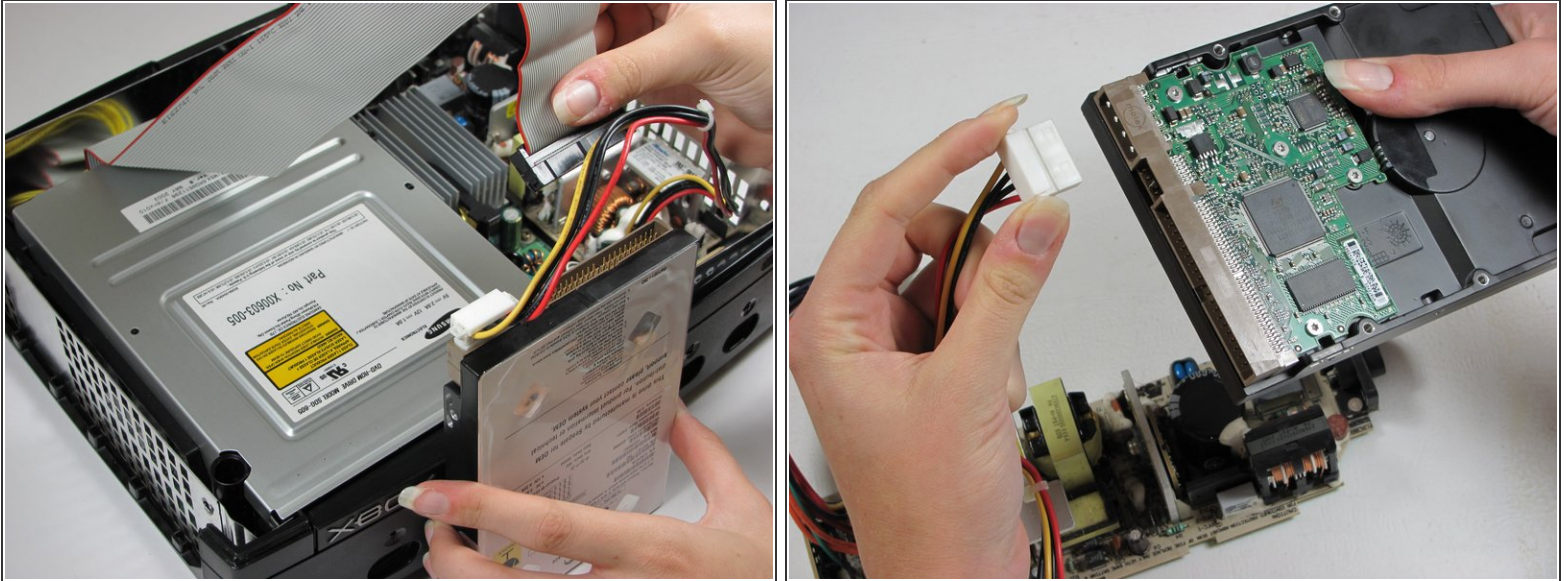
- Free the hard drive power cable from the carrier for sufficient slack to lift the hard drive out.
- Lift the plastic hard drive carrier out of the Xbox case.

## Step 8



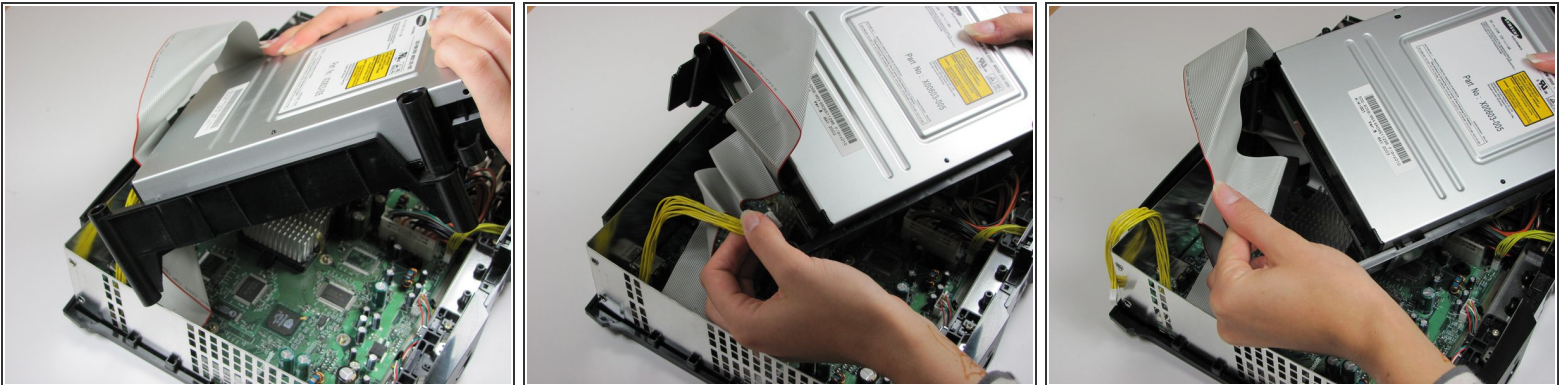
- Remove the four 3.4 mm T15 Torx screws from the plastic hard drive carrier (two screws per side).
- Carefully remove the hard drive from the plastic carrier. Gentle rocking will see the hard drive come out quite easily.

## Step 9



- Pull both the hard drive data ribbon cable and the power cable straight up from the hard drive.
- ⓘ They may be firmly seated, so be careful trying to remove them. **DO NOT** pull the wires as you may damage the cable assembly.

## Step 10 — Disc Drive



- Remove the disk drive. It should come right out.
- Unplug the ribbon cable and yellow cables from back of disk drive.



## Step 11



- Pry back the black plastic tabs around the disk drive in order to remove it from its housing. Once removed, set the drive aside.
- ONLY REMOVE IF DEAD!

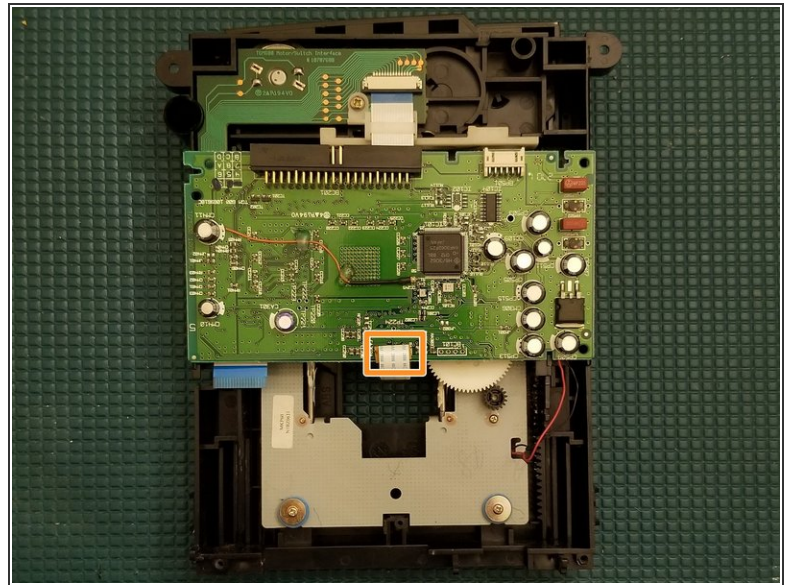
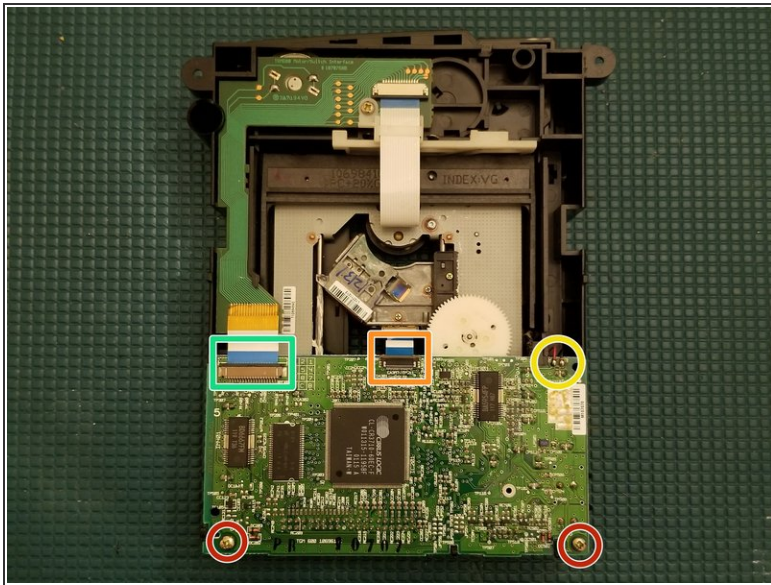
## Step 12 — Remove Screws & Housing



- Remove two #1 PH screws
- Remove upper metal housing
- Remove two T10 Screws
- Remove lower metal housing

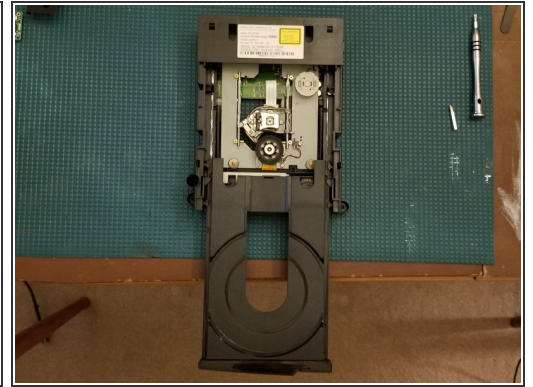
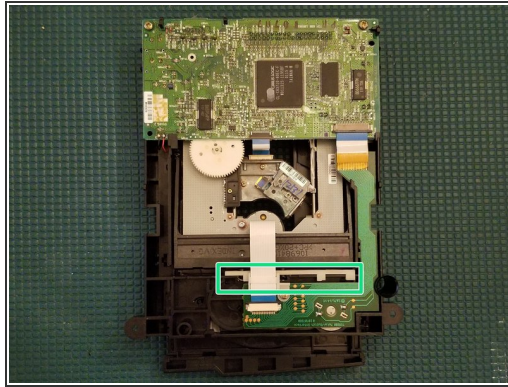
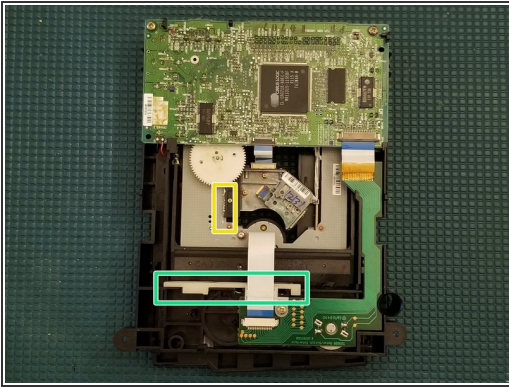


## Step 13 — Drive PCB



- Remove two PH1 screws
- Gently pull up on the ribbon retaining tab. Do NOT pull on ribbon. It will slide itself out in final step
- ⓘ Orange/Yellow steps only required if you need to remove the entire PCB
- Gently pull up on the ribbon retaining tab. Ribbon is attached to underside of PCB via a sticky pad. Gently pull the ribbon away from pad
- Desolder both points. Red (Left) Black (Right)
- Gently press up on the PCB where you removed the two PH1 screws and rotate the board upside down
- ⓘ If your drive is "dead" this is where I would suggest replacing your electrolytic capacitors. There are 12 on the Thomson drive

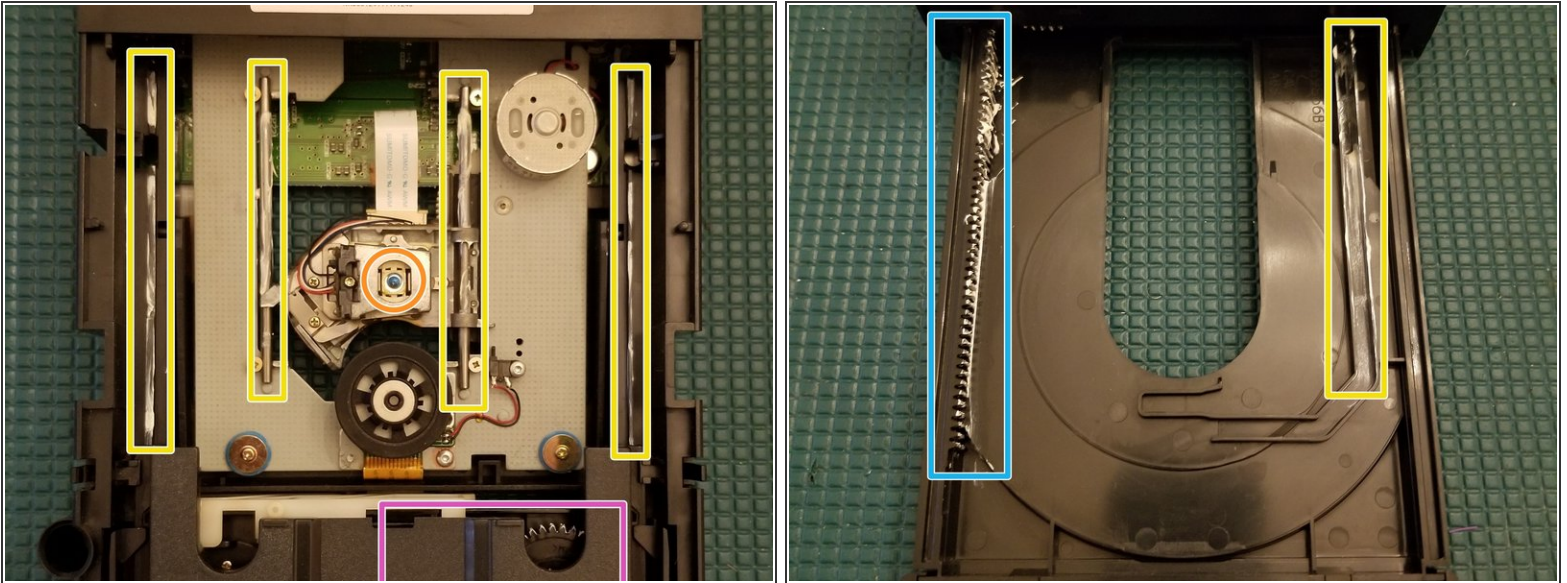
## Step 14 — Manually Eject Drive



- With the drive upside down slide the white lever to the right
- ⓘ Drive door will eject about a half inch
- Flip the drive over and slowly pull the door out
- ☑ Don't forget to slide the white lever back to the left during reassembly



## Step 15 — Apply Grease & Clean Laser



- ⓘ These drives are seasoned. Model 1.0 Xboxes were made in 2001 and nearly 20yrs old now. It's wise to re-lubricate them anywhere moving parts or friction is applied
- ☑ If your drive door sticks when pressing the eject button, now is the time to replace your drive belt. Do this before applying grease to eliminate accidentally getting it on your belt
  - Apply grease to highlighted areas
- ⓘ Don't forget the tooth track, highlighted yellow, shown in previous step
  - Apply a liberal glob of grease along the tooth track and insert/withdraw the drive door a few times to easily lubricate the gears highlighted pink
  - With a cotton swab, gently clean your laser with 91% or higher isopropyl alcohol

To reassemble your device, follow these instructions in reverse order.