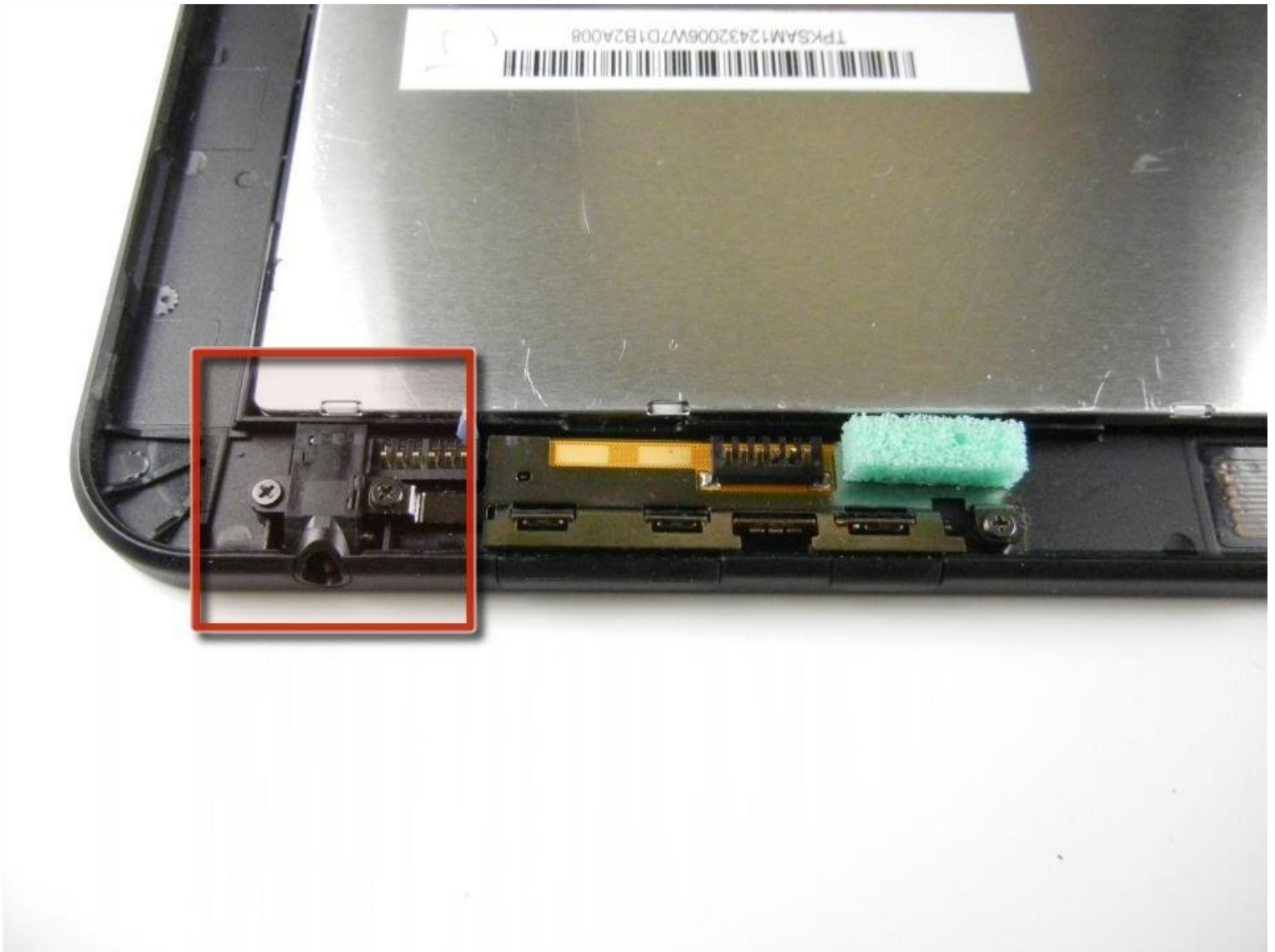




Kindle Fire HD 8.9" Headphone Input Replacement

This guide demonstrates how to remove and...

Written By: Christian Odegard



INTRODUCTION

This guide demonstrates how to remove and install a headphone input for the Kindle Fire HD 8.9".

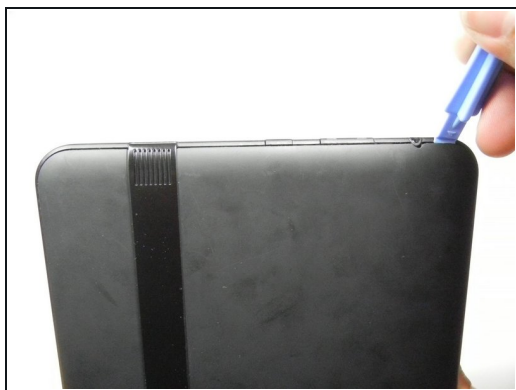
TOOLS:

Tournevis cruciforme #0 (1)
Outil pour ouvrir iFixit (1)


PARTS:

Kindle Fire HD 8.9" Wi-Fi Headphone Jack
(1)

Step 1 — Screen



- Insert a large plastic opening tool next to the Kindle's headphone jack.
 - ⓘ Make sure the notch on the plastic opening tool is facing the back of the Kindle.
- Move the plastic opening tool evenly around the Kindle, separating the two halves.

 Be careful not to completely separate the rear cover. There are two delicate flex cables that connect the display assembly to the motherboard.

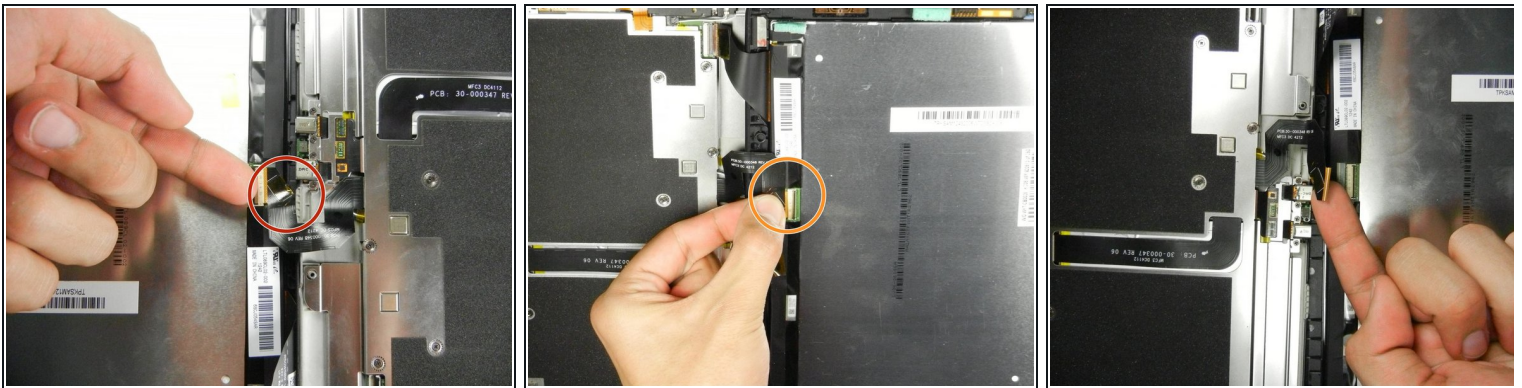
Step 2



- Set the Kindle down on the rear case.
- Holding the display assembly near the camera, carefully open the display assembly up to about 90 degrees from the rear case.

⚠ These images show the Kindle laying flat. In order to prevent damage to the flex cables, keep the Kindle open at 90 degrees while disconnecting the display assembly.

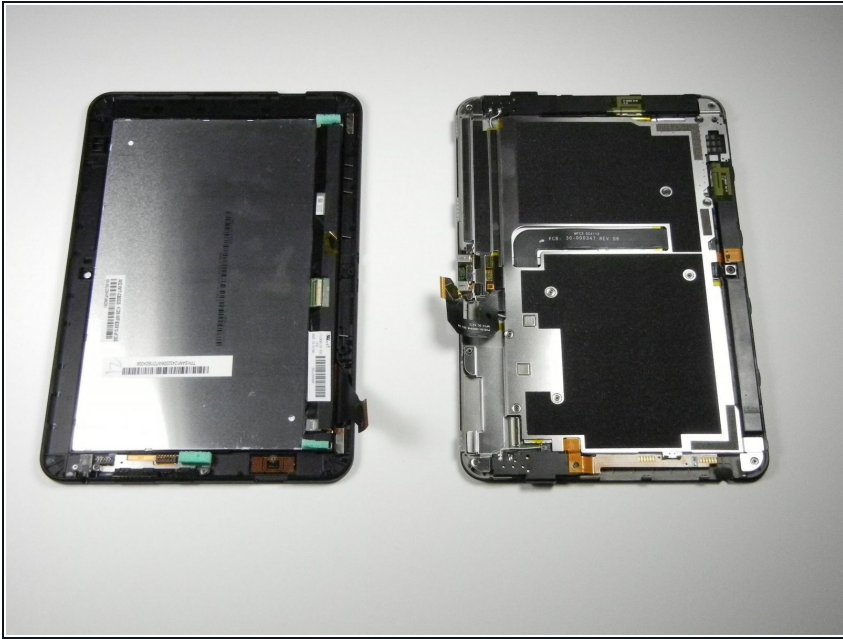
Step 3



- Lift the retaining flap on the ZIF connector of the upper flex cable.
- Gently pull the cable out of its socket.

⚠ This flex cable is delicate. Be careful not to crease or bend it while working.

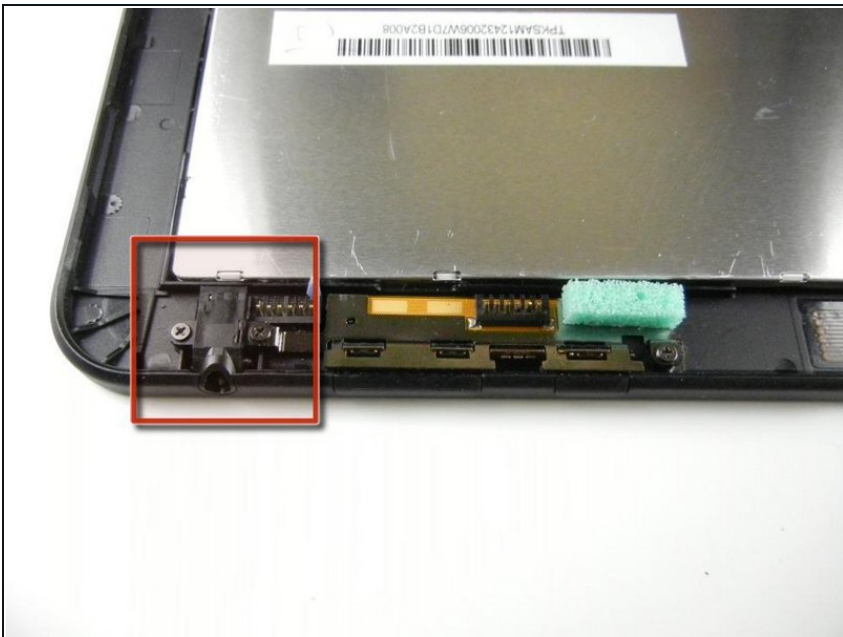
Step 4



- Separate the display assembly from the rest of the device.

⚠ When reassembling the device, align the two halves of the case before connecting the flex cables.

Step 5 — Headphone Input



- Locate the headphone input on the case of the device.

Step 6



- Unscrew the three 2.7mm Phillips #0 screws on the left and right sides of the headphone input.

Step 7



- Gently grab the metal casing that covers the headphone input, being careful not to force or break anything, and lift upward.
- ⚠ This metal casing also holds in the power and volume buttons. Be careful not to lose the buttons while working with the headphone input.
- The power and volume buttons are boxed in the first picture.

Step 8



- Pull the headphone input straight up out of its spot gently.

To reassemble your device, follow these instructions in reverse order.