



# Nintendo Game Boy Advance SP Brightness Switch Replacement

The brightness switch is the circular button...

Written By: DJ Pantone



# INTRODUCTION

The brightness switch is the circular button with a sun symbol engraved into it. The brightness switch is located at the top of the button panel.

## TOOLS:

Phillips #00 Screwdriver (1)  
iFixit Opening Tool (1)  
Tri-point Y00 Screwdriver (1)

## PARTS:

Nintendo Game Boy Advance SP  
Brightness Button (1)

## Step 1 — Battery



- Use a standard Phillips #00 screwdriver to loosen the 4 mm screw that keeps the battery cover attached to the device.

## Step 2



- Lift the battery cover up and remove it from the device.
- ① The screw will remain attached to the battery cover because of Nintendo's design.

## Step 3



- Use your fingers or a plastic opening tool to remove the battery from the device.
- ⚠ **Caution:** Please exercise caution when handling the battery. If it appears to be swelling or damaged at all it is considered a fire hazard.

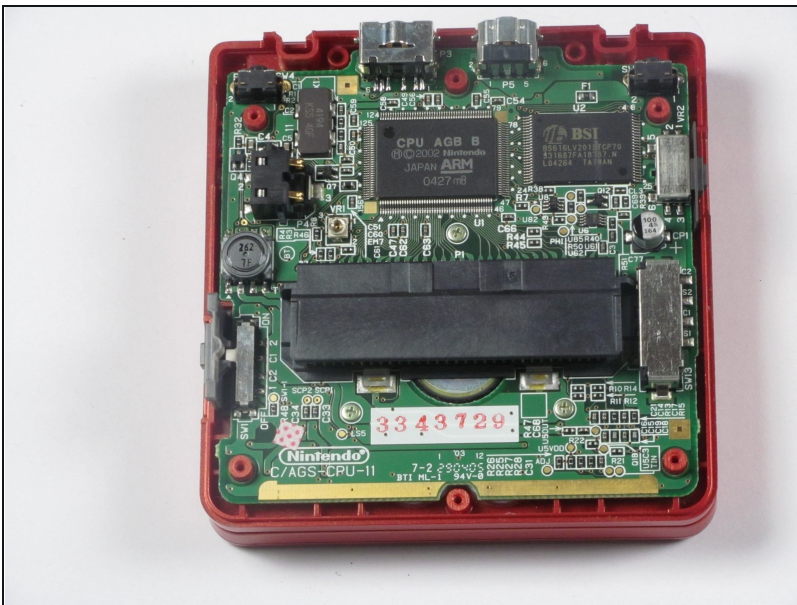


## Step 4 — Back Cover



- Remove four 6.5 mm screws from the corners of the back cover using a tri-point Y00 screwdriver.
- Remove two 4.6mm screws from the top-center and bottom-center of the device using a tri-point Y00 screwdriver.

## Step 5

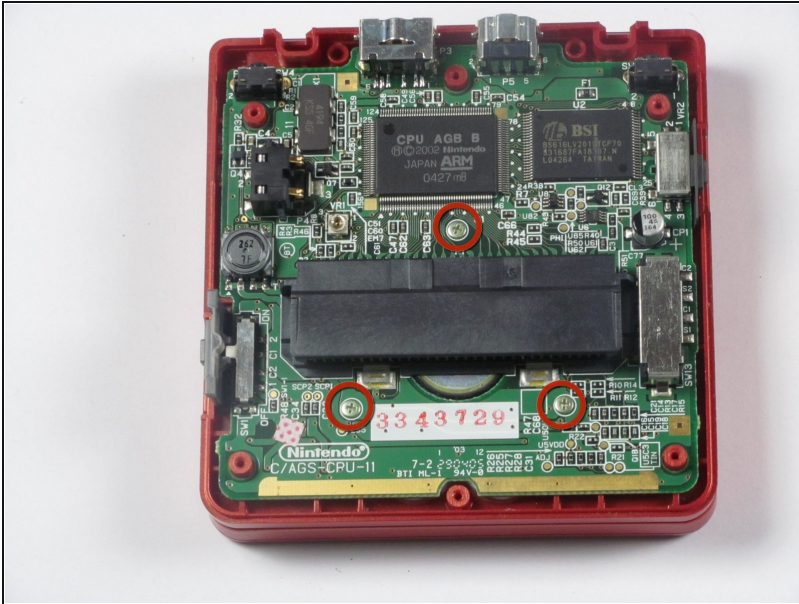


- Lift the back cover off of the device.

⚠ Potential for device damage: These inner components are vulnerable to static electricity. Exercise caution when handling these next steps to prevent damaging the device.

- ☑ Look out for the power switch that can fall out when taking the back cover off.

## Step 6 — Motherboard



- Using a Phillips #00 screwdriver, remove the three Phillips #00 4 mm long screws that hold the motherboard to the button panel.

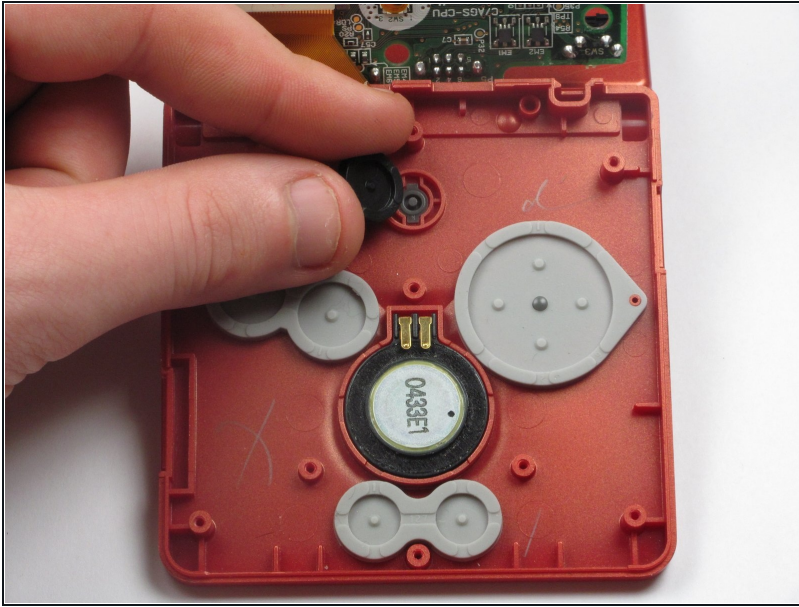
## Step 7



- ⚠ Be careful not to tear the ribbon cable that's connected to the screen. If you tear it, games will not appear on the device's screen!
- Flip the motherboard up and rest it on the other half of the device, so that the back of the buttons are visible as seen in the picture.

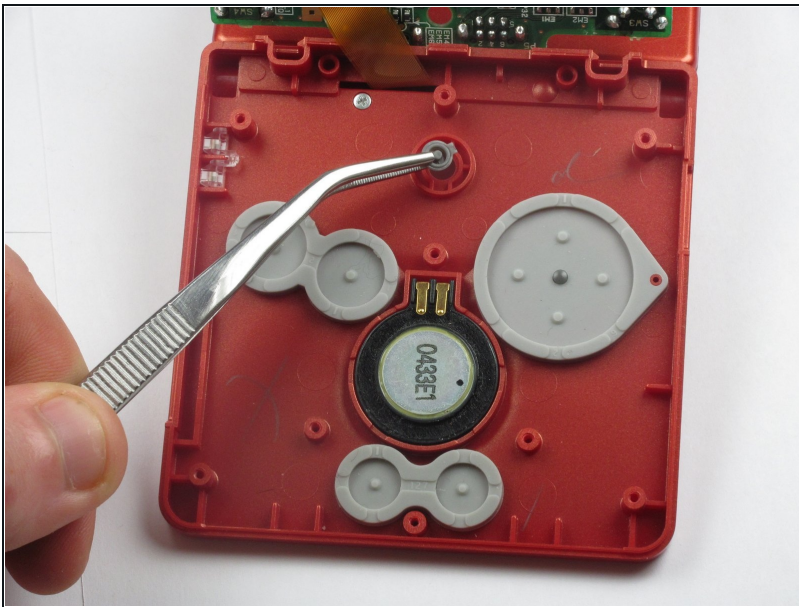


## Step 8 — Brightness Switch



- With your fingers, lift the track pad out off the brightness switch.
- ① Keep the track pad clean. A dirty or dusty track pad will lead to the brightness switch not working when you press it.

## Step 9



- Using [tweezers](#), lift the brightness switch out of the Game Boy Advance SP.

---

To reassemble your device, follow these instructions in reverse order.